

## Tree partitions

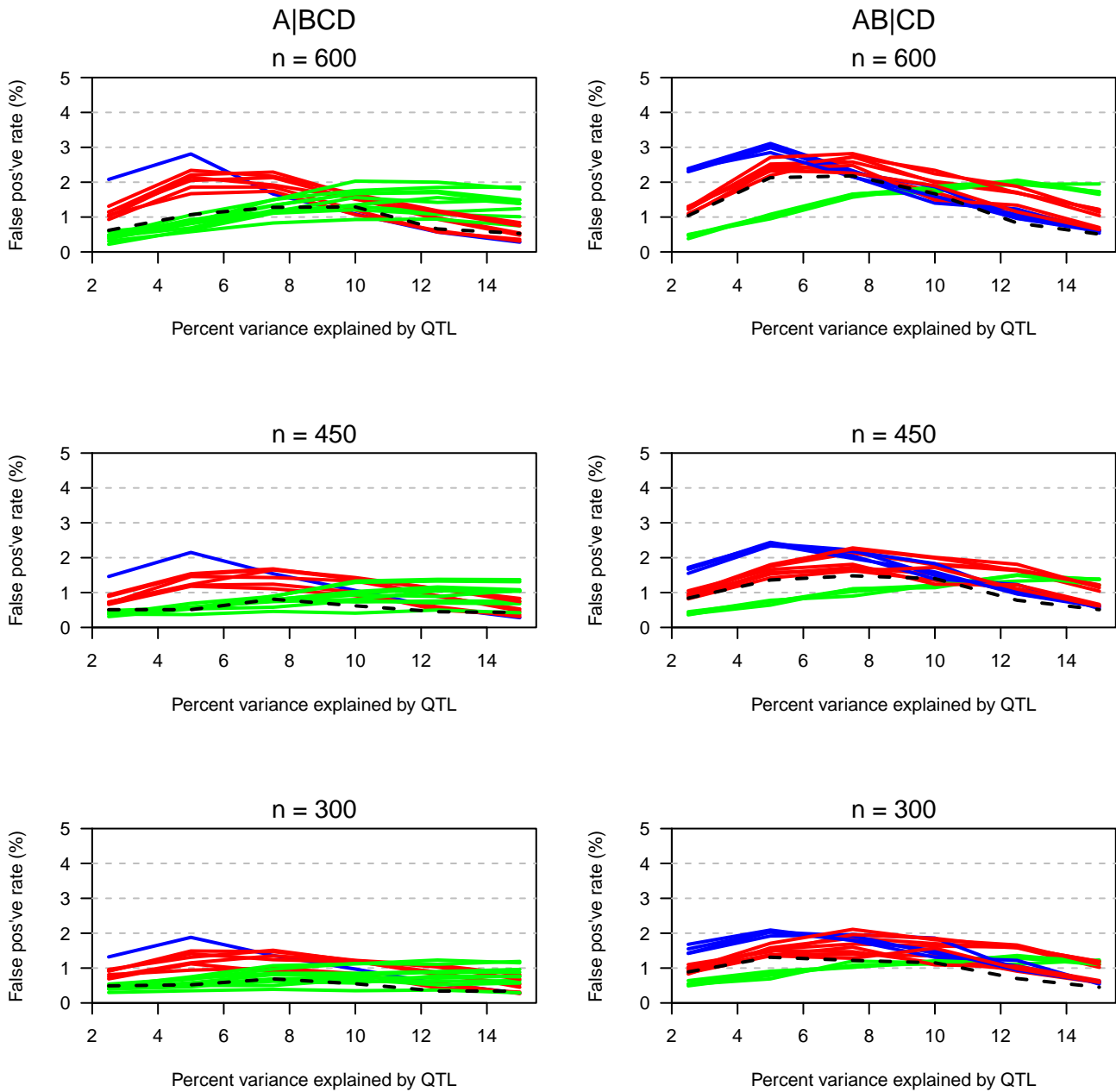


Figure S6: Estimated false positive rate in the case of four taxa related as in Figure 1, and with a total sample size of either 300 (bottom panels) 450 (middle panels) or 600 (top panels), as a function of the percent phenotypic variance explained by the QTL. The black dashed curves correspond to the use of all six possible crosses. The other curves are for the various choices of a minimal set of three crosses, with the curves in blue, red and green corresponding to cases in which 3, 2 and 1 of the crosses are segregating the QTL, respectively. The results are based on 10,000 simulation replicates, with analyses considering only the four possible partitions induced by the tree.