

GENETICS

Supporting Information

<http://www.genetics.org/cgi/content/full/genetics.109.110171/DC1>

**A Genomewide RNAi Screen for Genes That Affect the Stability,
Distribution and Function of P Granules in *Caenorhabditis elegans***

Dustin L. Updike and Susan Strome

Copyright © 2009 by the Genetics Society of America

DOI: 10.1534/genetics.109.110171

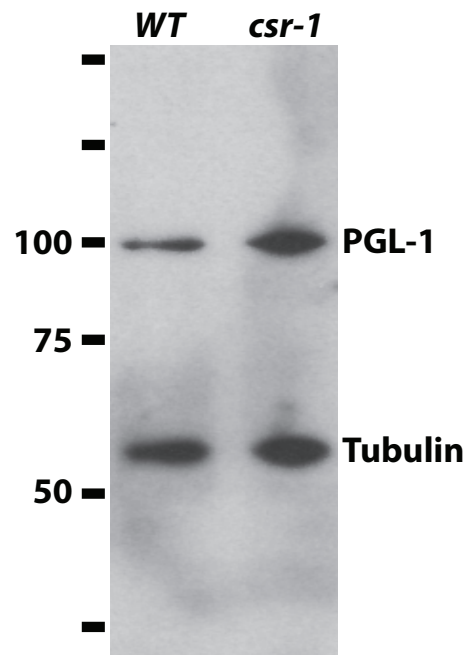


FIGURE S1.—Western analysis of PGL-1 accumulation in control and *csr-1* (*RNA*) worms shows a modest increase in PGL-1 levels.

TABLE S1**RNAi of SF3b Complex**

Gene	Worm Homolog	RNAi Clone	Embryonic Lethality n=50	PGL-1 Phenotype
control		empty vector	6%	no
SF3b5/10	no homolog			
SF3b125	<i>C46F11.4</i>	JA:C46F11.4	8%	no
SF3b3/130	<i>phi-6</i>	JA:K02F2.3	98%	yes
SF3b2/145	<i>W03F9.10</i>			
SF3b14b	<i>phf-5</i>			
SF3b1/155	<i>phi-11</i>	JA:T08A11.2	100%	yes
Sf3b4/49	<i>sap-49</i>	JA:C08B11.5	100%	yes

TABLE S2**RNAi of Nuclear Pore Components**

Target	Diffuse PGL-1 in Embryonic Germline Cells?	Penetrance of Diffuse PGL-1 n=50	Embryonic Lethality n=50
control	no	0%	8%
<i>npp-6</i>	yes	68%	100%
<i>npp-1</i>	yes	56%	100%
<i>npp-2</i>	yes	6%	86%
<i>npp-3</i>	yes	84%	100%
<i>npp-4</i>	yes	8%	54%
<i>npp-5</i>	yes	10%	46%
<i>npp-8a</i>	yes	86%	100%
<i>npp-8b</i>	yes	84%	100%
<i>npp-8d</i>	yes	90%	100%
<i>npp-12</i>	yes	10%	94%
<i>npp-14</i>	no	0%	100%
<i>npp-15</i>	no	0%	36%
<i>npp-16a</i>	no	0%	36%
<i>npp-16b</i>	no	0%	100%
<i>npp-17</i>	yes	10%	30%
<i>npp-18</i>	no	0%	8%
<i>npp-19</i>	yes	38%	96%
<i>imb-2</i>	yes	74%	100%
<i>imb-3a</i>	yes	4%	98%
<i>imb-3i</i>	no	0%	10%
<i>ima-3</i>	no	0%	8%