

Figure S3:

BazDNA

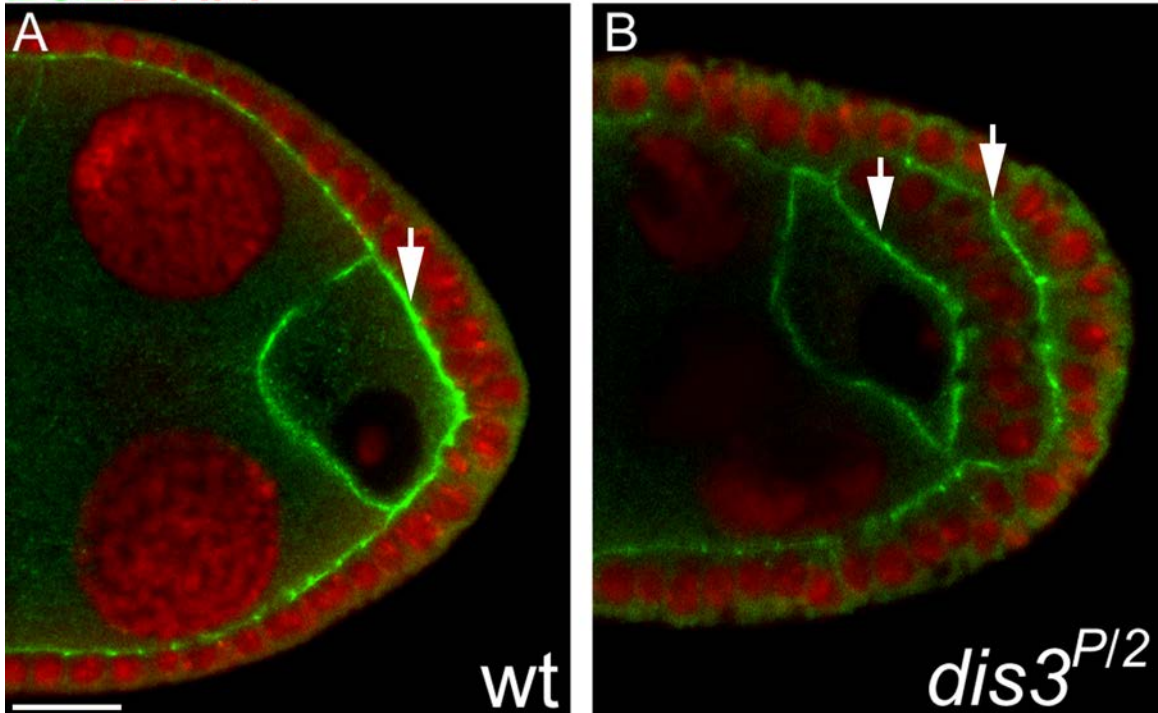


Fig. S3. Reduction of *dis3* function does not alter follicle cell polarity. (A,B) High magnification views of the posterior portion of *Drosophila* egg chambers from wild-type (A) and *dis3*^{P1/2}/*dis3*² mutant (B) females stained for DNA (red) and Bazooka (green). Arrows point to posterior follicle cells with apically localized Bazooka. Scale bar is 10 μ m.