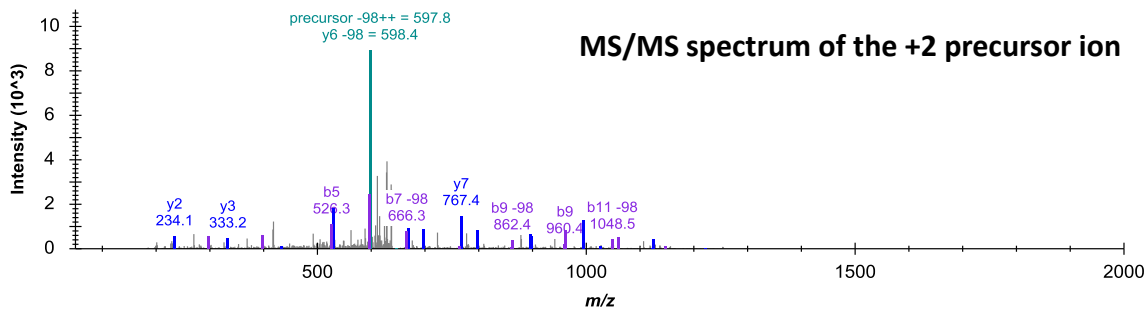
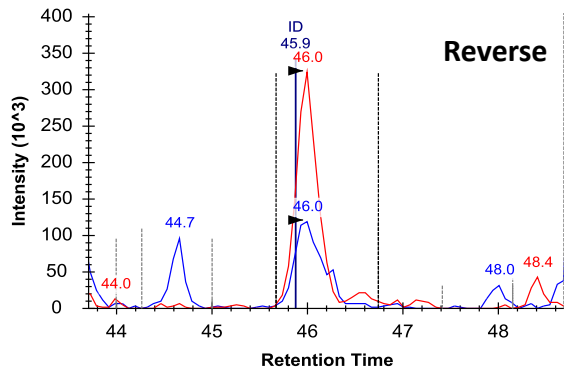
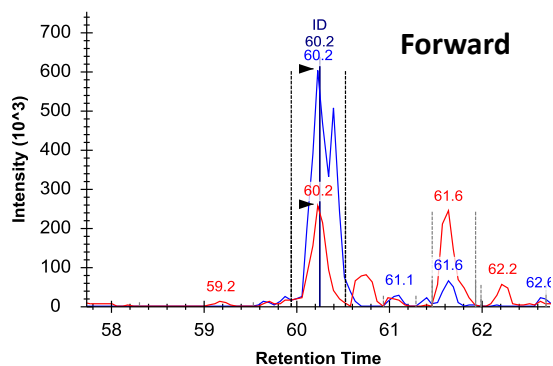
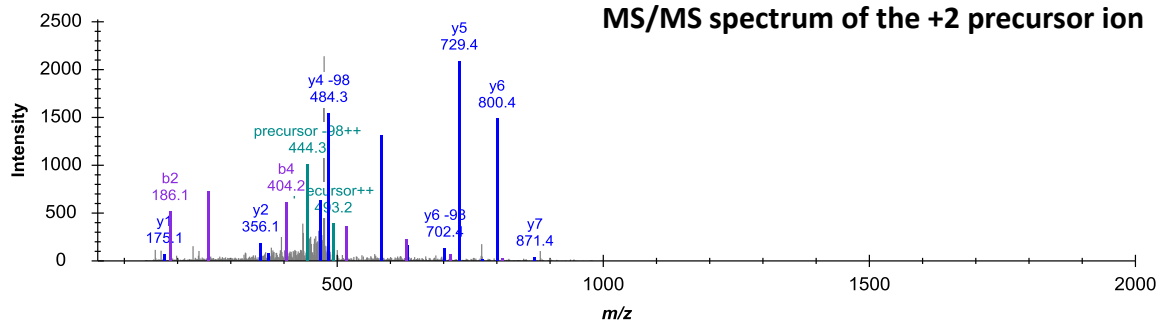
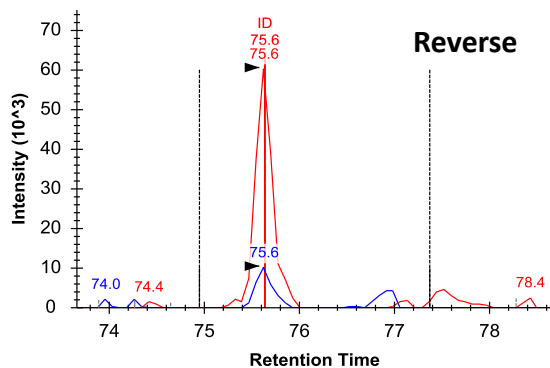
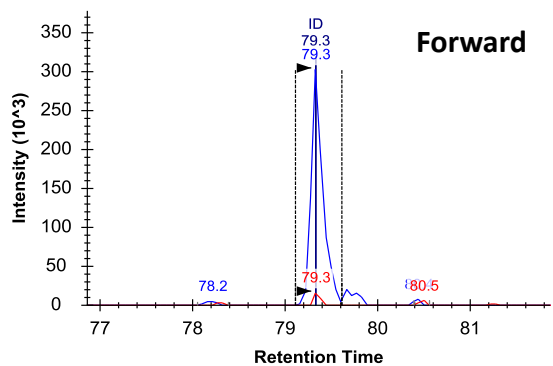


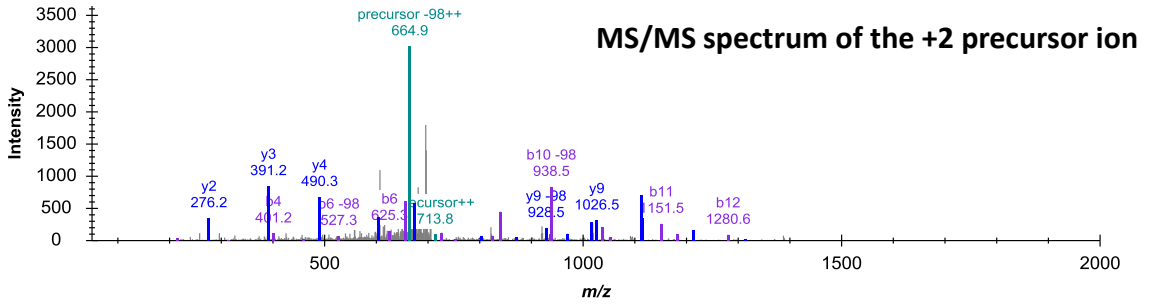
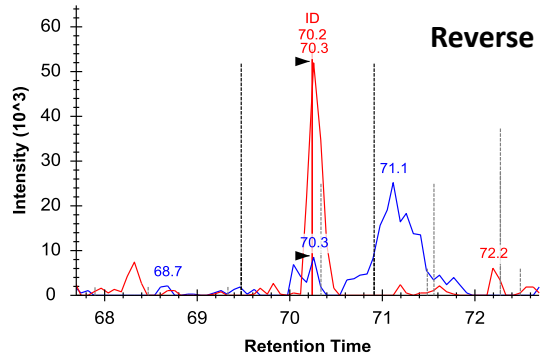
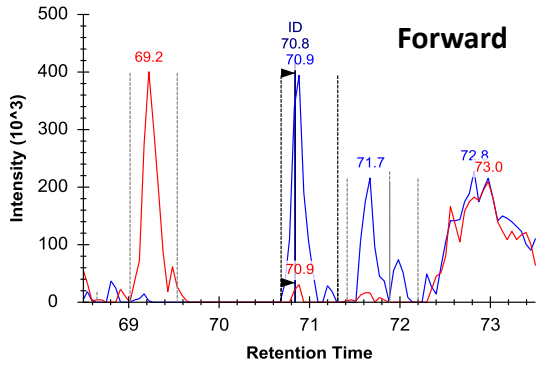
A. Xrs2 - APEVEAS(ph)PVVSK (S349)



B. Xrs2 - NAAFLIT(ph)R (T675)



C. Tof1 - LTVSGS(ph)QALVDEK (S379)



D. Tof1 - FNIS(ph)EGDITK (S626)

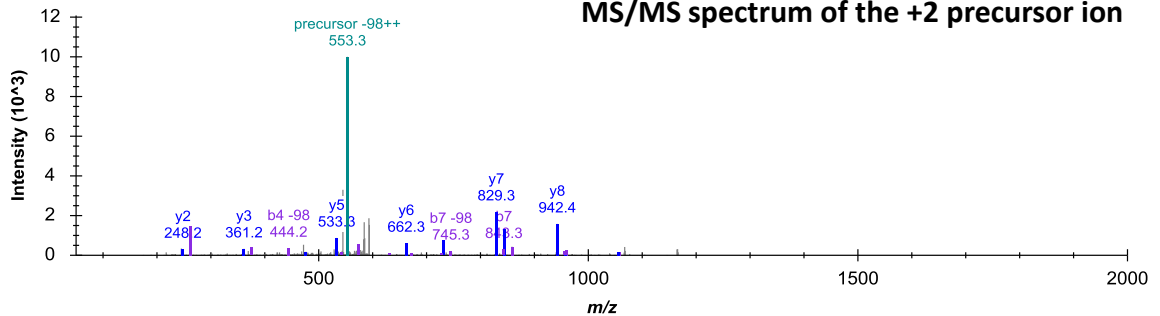
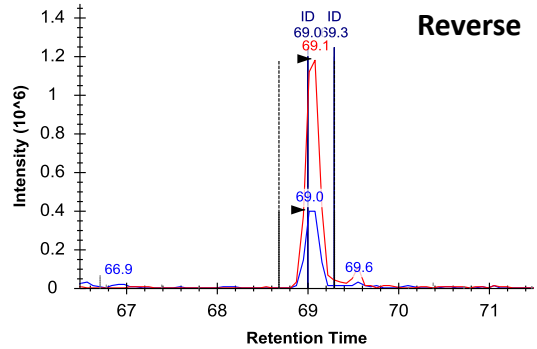
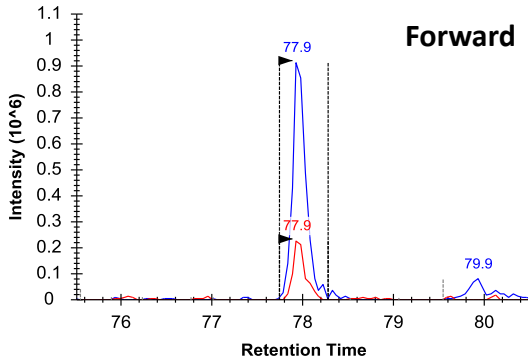


Figure S5. MS1 quantification and MS/MS identification of Xrs2 and Tof1 peptides.

Reported ratios were calculated from heavy and light peaks from the forward SILAC experiment and reverse SILAC experiment. Phosphopeptide identifications and site localizations were made from the MS/MS spectrum of the +2 precursor ion for each of the peptides shown: APEVEAS(ph)PVVSK (Xrs2-S349) (A); NAAFLIT(ph)R (Xrs2-T675) (B); LTVSGS(ph)QALVDEK (Tof1-S379) (C) and FNIS(ph)EGDITK (Tof1-S626) (D).