

GYSENPVENSQFLTEYVATR

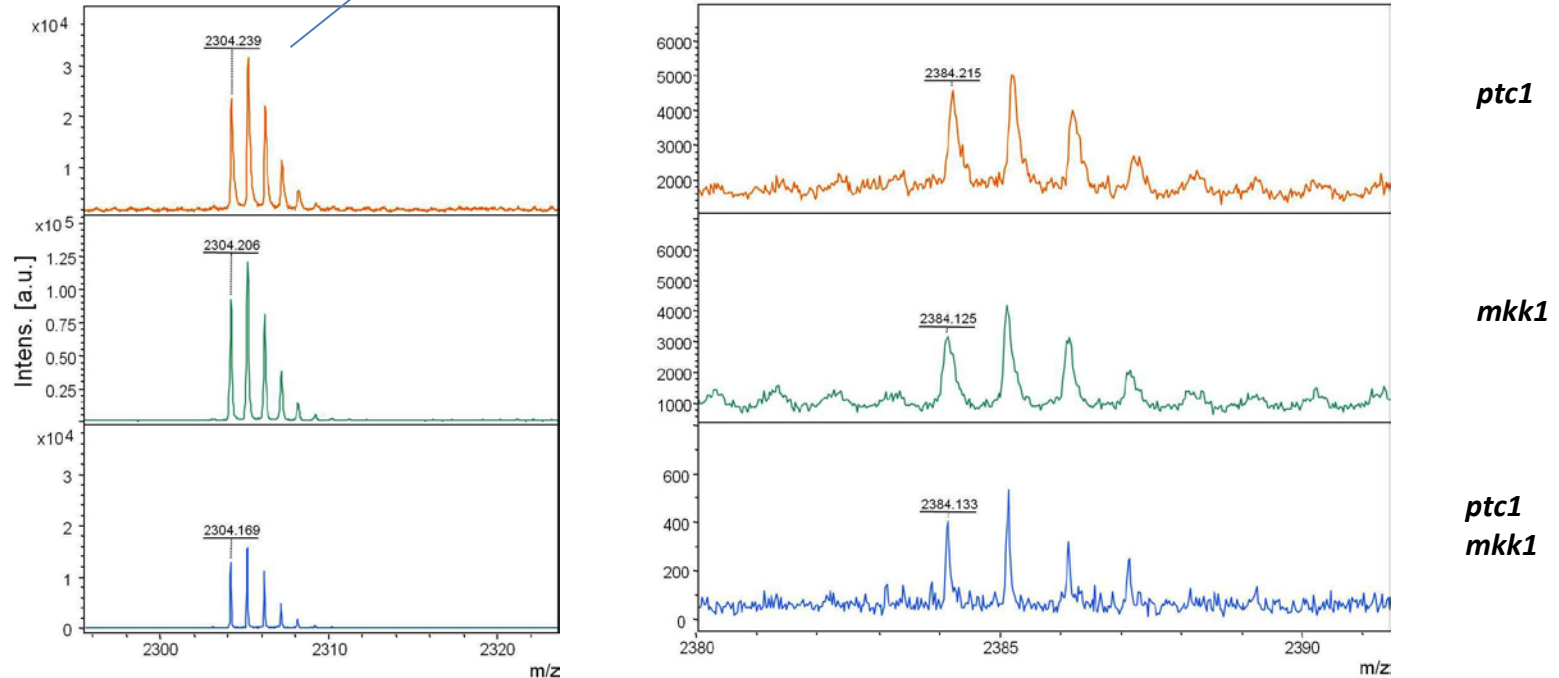


Figure S5. MS profile of unphosphorylated (left) and phosphorylated (right) peptide containing the SlT2 activating phosphorylatable residues. The calculated phospho/unphosphorylated ratios were 19.4 (*ptc1*), 3.4 (*mkk1*) and 3.1 (*ptc1 mkk1*).