

FIGURE S3 Flag leaf morphology of six CSSLs and two recombinant fixed lines. (1) Six CSSLs with Koshihikari background, each with a different fragment at QTL for flag leaf width derived from respective donor accession. (2) Pair of recombinant fixed lines containing either Akenohoshi- or Takanari-derived region around 32 Mb on chromosome 4 with almost the same background (F_4 line_10-7-58-16-1 and -5). Yellow and blue indicate that 233rd amino acid of NAL1 is R and H, respectively. (A) Width of flag leaf and number of vascular bundles. (B) Thickness of flag leaf.

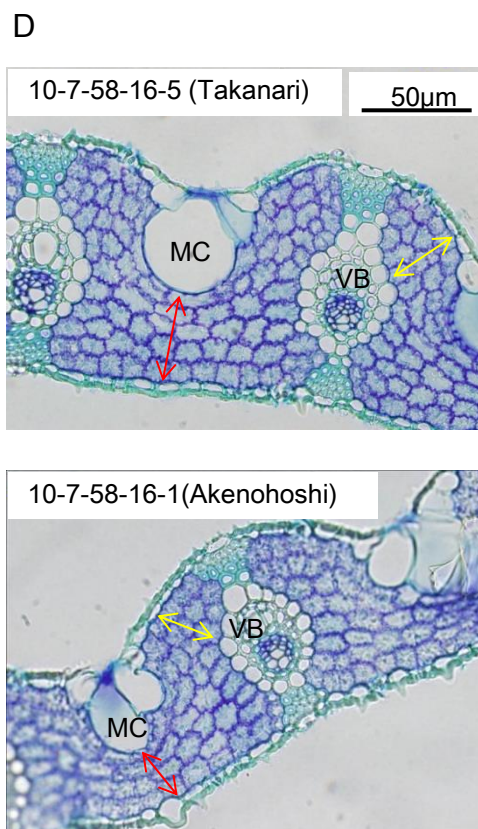
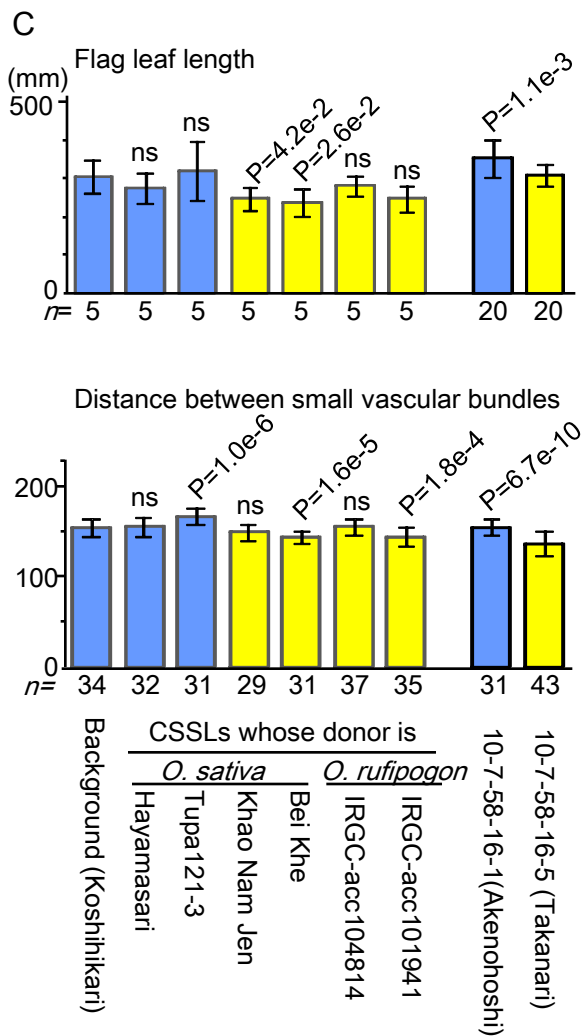


FIGURE S3 (continued)

(C) Length of flag leaf and distance between vascular bundles. Vertical bars show SD. P values were obtained from comparison between CSSL and Koshihikari or between pair of recombinant fixed lines; asterisk (*) indicates that P value was not obtained due to SD=0. (D) Transverse section of F_4 line_10-7-58-16-1 (Akenohoshi fragment) and -5 (Takanari fragment). VB, vascular bundle. MC, motor cell. Number of cells between motor cell and epidermal cell (red arrow) and number of cells between large vascular bundle and epidermal cell (yellow arrow) were counted.