

SUPPLEMENTAL INFORMATION for “Transposon based method for internal epitope tagging” by Zordan *et al*

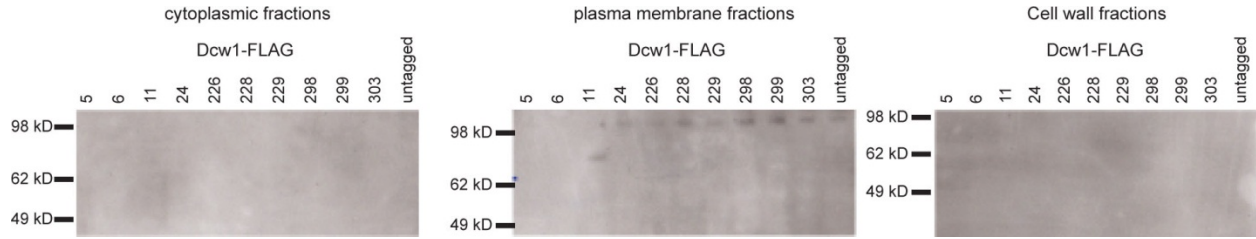


Figure S1. Western blot analysis of Dcw1-FLAG strains with α -DCW1 antibody

The same cell fractions used in Figure 5 were run on new SDS-PAGE gels and probed with an α -Dcw1 antibody. Signal was detected using chemiluminescence, and film was exposed for 45 minutes. Material from 7.5×10^5 cells is loaded in each strain in each fraction. Wells are labeled with the amino acid site of the FLAG tag within Dcw1. We note the apparent size of Dcw1 in the plasma membrane is larger than what we observed with α -FLAG antibodies, but the overall pattern is consistent with the α -FLAG Westerns shown in Figure 5.