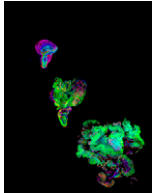


Contents

Vol. 216 No. 1 September 2020



The picture depicts the progression of tumorigenesis in wing imaginal disc tissue starting from the wild type wing disc tissue at the top through hyperplastic growth induced by oncogenic driver-Yki, in the middle, to a transformed neoplastic wing disc tissue induced by Yki in the background of depletion of Negative elongation factor complex (Nelf-A) at the bottom. Our work published in this issue shows that promoter proximal pausing limits tumorigenic potential of Yki. Wing discs expressing GFP are stained for E-cadherin and DAPI. See Nagarkar *et al.*, pp 67–77.

FLYBOOK

GENE EXPRESSION

1–26 **Transcriptional Enhancers in *Drosophila***

Small, Stephen and David N. Arnosti

OPEN ACCESS

INVESTIGATIONS

STATISTICAL GENETICS AND GENOMICS

27–41 **Accounting for Group-Specific Allele Effects and Admixture in Genomic Predictions: Theory and Experimental Evaluation in Maize**

Rio, Simon, Laurence Moreau, Alain Charcosset, and Tristan Mary-Huard

GENOME INTEGRITY AND TRANSMISSION

43–50 **Punctuated Aneuploidization of the Budding Yeast Genome**

Heasley, Lydia R., Ruth A. Watson, and Juan Lucas Argueso

HIGHLIGHTED ARTICLE

GENE EXPRESSION

51–66 **Normal Patterns of Histone H3K27 Methylation Require the Histone Variant H2A.Z in *Neurospora crassa***

Courtney, Abigail J., Masayuki Kamei, Aileen R. Ferraro, Kexin Gai, Qun He, Shinji Honda, and Zachary A. Lewis

67–77 **Promoter Proximal Pausing Limits Tumorous Growth Induced by the Yki Transcription Factor in *Drosophila***

Nagarkar, Sanket, Ruchi Wasnik, Pravallika Govada, Stephen Cohen, and L. S. Shashidhara

OPEN ACCESS

79–93 **Polymorphism and Divergence of Novel Gene Expression Patterns in *Drosophila melanogaster***

Cridland, Julie M., Alex C. Majane, Hayley K. Sheehy, and David J. Begun

HIGHLIGHTED ARTICLE

CELLULAR GENETICS

95–116 **New Aspects of Invasive Growth Regulation Identified by Functional Profiling of MAPK Pathway Targets in *Saccharomyces cerevisiae***

Vandermeulen, Matthew D. and Paul J. Cullen

HIGHLIGHTED ARTICLE

DEVELOPMENTAL AND BEHAVIORAL GENETICS

- 117–134 **The Classic *Lobe* Eye Phenotype of *Drosophila* Is Caused by Transposon Insertion-Induced Misexpression of a Zinc-Finger Transcription Factor**
Son, Wonseok and Kwang-Wook Choi
- 135–144 **A New Role for Neuropeptide F Signaling in Controlling Developmental Timing and Body Size in *Drosophila melanogaster***
Kannangara, Jade R., Michelle A. Henstridge, Linda M. Parsons, Shu Kondo, Christen K. Mirth, and Coral G. Warr
- 145–157 **Signaling by AWC Olfactory Neurons Is Necessary for *Caenorhabditis elegans*' Response to Prenol, an Odor Associated with Nematode-Infected Insects**
Baiocchi, Tiffany, Kyle Anesko, Nathan Mercado, Heenam Park, Cassandra Kin, Brandon Strickhouser-Monzon, Priscila Robles, Christian Bowman, Han Wang, Paul W. Sternberg, and Adler R. Dillman
OPEN ACCESS
- 159–175 **Selective Disruption of Synaptic BMP Signaling by a Smad Mutation Adjacent to the Highly Conserved H2 Helix**
Nguyen, Tho Huu, Tae Hee Han, Stuart J. Newfeld, and Mihaela Serpe
OPEN ACCESS
- 177–190 **A Novel Mechanism for Activation of Myosin Regulatory Light Chain by Protein Kinase C-Delta in *Drosophila***
Vaziri, Pooneh, Danielle Ryan, Christopher A. Johnston, and Richard M. Cripps

POPULATION AND EVOLUTIONARY GENETICS

- 191–203 **Mutant Evolution in Spatially Structured and Fragmented Expanding Populations**
Wodarz, Dominik and Natalia L. Komarova
- 205–226 **Extensive Recombination Suppression and Epistatic Selection Causes Chromosome-Wide Differentiation of a Selfish Sex Chromosome in *Drosophila pseudoobscura***
Fuller, Zachary L., Spencer A. Koury, Christopher J. Leonard, Randee E. Young, Kobe Ikegami, Jonathan Westlake, Stephen Richards, Stephen W. Schaeffer, and Nitin Phadnis
HIGHLIGHTED ARTICLE OPEN ACCESS

- 227–240 **The Impact of Dominance on Adaptation in Changing Environments**
Devi, Archana and Kavita Jain

GENETICS OF COMPLEX TRAITS

- 241–259 **Genetic Architecture Modulates Diet-Induced Hepatic mRNA and miRNA Expression Profiles in Diversity Outbred Mice**
Que, Excel, Kristen L. James, Alisha R. Coffey, Tangi L. Smallwood, Jody Albright, M. Nazmul Huda, Daniel Pomp, Praveen Sethupathy, and Brian J. Bennett
OPEN ACCESS