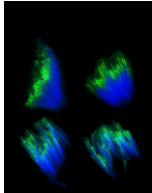


Contents

Vol. 215 No. 3 July 2020



Shown are sperm from *Drosophila melanogaster* stained with DAPI (blue) and phalloidin (green), which label the sperm nuclei and individualization complex (IC), respectively. Disruption of some Y chromosome fertility genes affects the IC. The ICs shown are from the following males (clockwise from top left): wild type; *kl-2*; *kl-3* and *kl-5*. Image courtesy of Jiaying Zhang. See Zhang *et al.*, pp 623-633.

WORMBOOK

GENE AND GENOME REGULATORY MECHANISMS

- 531–568 **mRNA Editing, Processing and Quality Control in *Caenorhabditis elegans***
Arribere, Joshua A., Hidehito Kuroyanagi, and Heather A. Hundley

INVESTIGATIONS

METHODS, TECHNOLOGY, & RESOURCES

- 569–578 **A Light-Inducible Strain for Genome-Wide Histone Turnover Profiling in *Neurospora crassa***
Storck, William K., Sabrina Z. Abdulla, Michael R. Rountree, Vincent T. Bicocca, and Eric U. Selker

STATISTICAL GENETICS AND GENOMICS

- 579–595 **Multiple QTL Mapping in Autopolyploids: A Random-Effect Model Approach with Application in a Hexaploid Sweetpotato Full-Sib Population**
da Silva Pereira, Guilherme, Dorcus C. Gemenet, Marcelo Mollinari, Bode A. Olukolu, Joshua C. Wood, Federico Diaz, Veronica Mosquera, Wolfgang J. Gruneberg, Awais Khan, C. Robin Buell, G. Craig Yencho, and Zhao-Bang Zeng

HIGHLIGHTED ARTICLE OPEN ACCESS

- 597–607 **Estimating Linear and Nonlinear Gene Coexpression Networks by Semiparametric Neighborhood Selection**
Kontio, Juho A. J., Marko J. Rinta-aho, and Mikko J. Sillanpää

GENOME INTEGRITY AND TRANSMISSION

- 609–621 **A Multimodal Genotoxic Anticancer Drug Characterized by Pharmacogenetic Analysis in *Caenorhabditis elegans***
Ye, Frank B., Akil Hamza, Tejomayee Singh, Stephane Flibotte, Philip Hieter, and Nigel J. O'Neil

OPEN ACCESS

- 623–633 **The Role of Y Chromosome Genes in Male Fertility in *Drosophila melanogaster***
Zhang, Jiaying, Junjie Luo, Jieyan Chen, Junbiao Dai, and Craig Montell

HIGHLIGHTED ARTICLE

- 635–651 **NHJ-1 Is Required for Canonical Nonhomologous End Joining in *Caenorhabditis elegans***
Vujin, Aleksandar, Steven J. Jones, and Monique Zetka

GENE EXPRESSION

- 653–664 **Base-Pairing Requirements for Small RNA-Mediated Gene Silencing of Recessive Self-Incompatibility Alleles in *Arabidopsis halleri***
Burghgraeve, Nicolas, Samson Simon, Simon Barral, Isabelle Fobis-Loisy, Anne-Catherine Holl, Chloé Ponitzki, Eric Schmitt, Xavier Vekemans, and Vincent Castric

- 665–681 **Modular Organization of *Cis*-regulatory Control Information of Neurotransmitter Pathway Genes in *Caenorhabditis elegans***
Serrano-Saiz, Esther, Burcu Gulez, Laura Pereira, Marie Gendrel, Sze Yen Kerk, Berta Vidal, Weidong Feng, Chen Wang, Paschalis Kratsios, James B. Rand, and Oliver Hobert
HIGHLIGHTED ARTICLE

CELLULAR GENETICS

- 683–698 **The Yeast Hsp70 Cochaperone Ydj1 Regulates Functional Distinction of *Ssa* Hsp70s in the Hsp90 Chaperoning Pathway**
Gaur, Deepika, Prashant Singh, Jyoti Guleria, Arpit Gupta, Satinderdeep Kaur, and Deepak Sharma

- 699–712 **A Decoy Library Uncovers U-Box E3 Ubiquitin Ligases That Regulate Flowering Time in *Arabidopsis***
Feke, Ann M., Jing Hong, Wei Liu, and Joshua M. Gendron
HIGHLIGHTED ARTICLE

- 713–728 **A Family of Auxiliary Subunits of the TRP Cation Channel Encoded by the Complex *inaF* Locus**
Chen, Zijing and Craig Montell

- 729–746 **Growth-Dependent Activation of Protein Kinases Suggests a Mechanism for Measuring Cell Growth**
Jasani, Akshi, Tiffany Huynh, and Douglas R. Kellogg
HIGHLIGHTED ARTICLE

DEVELOPMENTAL AND BEHAVIORAL GENETICS

- 747–766 **Amyotrophic Lateral Sclerosis Modifiers in *Drosophila* Reveal the Phospholipase D Pathway as a Potential Therapeutic Target**
Kankel, Mark W., Anindya Sen, Lei Lu, Marina Theodorou, Douglas N. Dimlich, Alexander McCampbell, Christopher E. Henderson, Neil A. Shneider, and Spyros Artavanis-Tsakonas
HIGHLIGHTED ARTICLE OPEN ACCESS

POPULATION AND EVOLUTIONARY GENETICS

- 767–777 **Evolution of Microbial Growth Traits Under Serial Dilution**
Lin, Jie, Michael Manhart, and Ariel Amir
OPEN ACCESS

- 779–797 **Efficiently Summarizing Relationships in Large Samples: A General Duality Between Statistics of Genealogies and Genomes**
Ralph, Peter, Kevin Thornton, and Jerome Kelleher
OPEN ACCESS

- 799–812 **The Impact of Recessive Deleterious Variation on Signals of Adaptive Introgression in Human Populations**
Zhang, Xinjun, Bernard Kim, Kirk E. Lohmueller, and Emilia Huerta-Sánchez
OPEN ACCESS

- 813–829 **Genetic Signatures of Evolutionary Rescue by a Selective Sweep**
Osmond, Matthew M. and Graham Coop
HIGHLIGHTED ARTICLE

- 831–846 **Biased Gene Conversion Constrains Adaptation in *Arabidopsis thaliana***
Hämälä, Tuomas and Peter Tiffin

- 847–868 **Evolutionary Rescue and Drug Resistance on Multicopy Plasmids**
Santer, Mario and Hildegard Uecker

GENETICS OF COMPLEX TRAITS

- 869–886 **Lung Function in African American Children with Asthma Is Associated with Novel Regulatory Variants of the KIT Ligand *KITLG/SCF* and Gene-By-Air-Pollution Interaction**
Mak, Angel C. Y., Satria Sajuthi, Jaehyun Joo, Shujie Xiao, Patrick M. Sleiman, Marquitta J. White, Eunice Y. Lee, Benjamin Saef, Donglei Hu, Hongsheng Gui, Kevin L. Keys, Fred Lurmann, Deepti Jain, Gonçalo Abecasis, Hyun Min Kang, Deborah A. Nickerson, Soren Germer, Michael C. Zody, Lara Winterkorn, Catherine Reeves, Scott Huntsman, Celeste Eng, Sandra Salazar, Sam S. Oh, Frank D. Gilliland, Zhanghua Chen, Rajesh Kumar, Fernando D. Martínez, Ann Chen Wu, Elad Ziv, Hakon Hakonarson, Blanca E. Himes, L. Keoki Williams, Max A. Seibold, and Esteban G. Burchard
HIGHLIGHTED ARTICLE OPEN ACCESS

CORRIGENDUM

- 887 **Gene–Diet Interactions: Dietary Rescue of Metabolic Defects in *spen*-Depleted *Drosophila melanogaster***
Gillette, Claire M., Kelsey E. Hazegh, Travis Nemkov, Davide Stefanoni, Angelo D'Alessandro, J. Matthew Taliaferro, and Tânia Reis