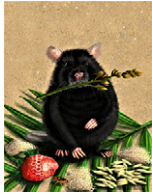


# Contents

Vol. 206 No. 2 June 2017



An artistic interpretation of the seven organisms that are featured in this multiparental populations issue of *GENETICS* and *G3* (mouse, sorghum, rice, fruit fly, palm leaf, yeast, and strawberry). Read more at [http://www.genetics.org/content/multiparental\\_populations](http://www.genetics.org/content/multiparental_populations). Image courtesy of Melissa Robbins, who hopes that this illustration inspires you to discover and learn more about genetics and the field of science.

## MULTIPARENTAL POPULATIONS

### EDITORIAL

- 527–529 **Back to the Future: Multiparent Populations Provide the Key to Unlocking the Genetic Basis of Complex Traits**

de Koning, Dirk-Jan and Lauren M. McIntyre

**OPEN ACCESS**

### COMMENTARY

- 531–535 **Epistasis: Searching for Interacting Genetic Variants Using Crosses**

Ehrenreich, Ian M.

**OPEN ACCESS**

### INVESTIGATIONS

- 537–556 **Genomes of the Mouse Collaborative Cross**

Srivastava, Anuj, Andrew P. Morgan, Maya L. Najarian, Vishal Kumar Sarsani, J. Sebastian Sigmon, John R. Shorter, Anwica Kashfeen, Rachel C. McMullan, Lucy H. Williams, Paola Giusti-Rodríguez, Martin T. Ferris, Patrick Sullivan, Pablo Hock, Darla R. Miller, Timothy A. Bell, Leonard McMillan, Gary A. Churchill, and Fernando Pardo-Manuel de Villena

**OPEN ACCESS**

- 557–572 **Male Infertility Is Responsible for Nearly Half of the Extinction Observed in the Mouse Collaborative Cross**

Shorter, John R., Fanny Odet, David L. Aylor, Wenqi Pan, Chia-Yu Kao, Chen-Ping Fu, Andrew P. Morgan, Seth Greenstein, Timothy A. Bell, Alicia M. Stevans, Ryan W. Feathers, Sunny Patel, Sarah E. Cates, Ginger D. Shaw, Darla R. Miller, Elissa J. Chesler, Leonard McMillian, Deborah A. O'Brien, and Fernando Pardo-Manuel de Villena

- 573–585 **Increased Power To Dissect Adaptive Traits in Global Sorghum Diversity Using a Nested Association Mapping Population**

Bouchet, Sophie, Marcus O. Olatoye, Sandeep R. Marla, Ramasamy Perumal, Tesfaye Tesso, Jianming Yu, Mitch Tuinstra, and Geoffrey P. Morris

**HIGHLIGHTED ARTICLE OPEN ACCESS**

- 587–602 **Genetic Dissection of Nutrition-Induced Plasticity in Insulin/Insulin-Like Growth Factor Signaling and Median Life Span in a *Drosophila* Multiparent Population**

Stanley, Patrick D., Enoch Ng'oma, Siri O'Day, and Elizabeth G. King

**HIGHLIGHTED ARTICLE**

- 603–619** **Structural Variation Shapes the Landscape of Recombination in Mouse**  
Morgan, Andrew P., Daniel M. Gatti, Maya L. Najarian, Thomas M. Keane,  
Raymond J. Galante, Allan I. Pack, Richard Mott, Gary A. Churchill,  
and Fernando Pardo-Manuel de Villena  
**HIGHLIGHTED ARTICLE**
- 621–639** **Epistatic Networks Jointly Influence Phenotypes Related to Metabolic Disease  
and Gene Expression in Diversity Outbred Mice**  
Tyler, Anna L., Bo Ji, Daniel M. Gatti, Steven C. Munger, Gary A. Churchill,  
Karen L. Svenson, and Gregory W. Carter  
**HIGHLIGHTED ARTICLE OPEN ACCESS**
- PERSPECTIVES**
- 641–650** **A Physicist’s Quest in Biology: Max Delbrück and “Complementarity”**  
Strauss, Bernard S.  
**HIGHLIGHTED ARTICLE**
- GENETIC TOOLBOX REVIEW**
- 651–664** **The Mouse Lemur, a Genetic Model Organism for Primate Biology, Behavior,  
and Health**  
Ezran, Camille, Caitlin J. Karanewsky, Jozeph L. Pendleton, Alex Sholtz,  
Maya R. Krasnow, Jason Willick, Andriamahery Razafindrakoto, Sarah Zohdy,  
Megan A. Albertelli, and Mark A. Krasnow  
**OPEN ACCESS**
- FLYBOOK**
- 665–689** **A Short History and Description of *Drosophila melanogaster* Classical  
Genetics: Chromosome Aberrations, Forward Genetic Screens, and the Nature  
of Mutations**  
Kaufman, Thomas C.
- WORMBOOK**
- 691–716** **Experimental Evolution with *Caenorhabditis* Nematodes**  
Teotónio, Henrique, Suzanne Estes, Patrick C. Phillips, and Charles F. Baer  
**OPEN ACCESS**
- YEASTBOOK**
- 717–750** **Genome Diversity and Evolution in the Budding Yeasts (Saccharomycotina)**  
Dujon, Bernard A. and Edward J. Louis  
**OPEN ACCESS**
- COMMENTARIES**
- 751–753** **An Extraordinary Sex Determination Mechanism in a Book Louse**  
Beukeboom, Leo W.
- 755–756** **Alternative Poly(A) Tails Meet miRNA Targeting in *Caenorhabditis elegans***  
Khraiwesh, Basel and Kourosch Salehi-Ashtiani  
**OPEN ACCESS**

## INVESTIGATIONS

### METHODS, TECHNOLOGY, AND RESOURCES

- 757–774** **Alternative Polyadenylation Directs Tissue-Specific miRNA Targeting in *Caenorhabditis elegans* Somatic Tissues**  
Blazie, Stephen M., Heather C. Geissel, Henry Wilky, Rajan Joshi, Jason Newbern, and Marco Mangone  
**HIGHLIGHTED ARTICLE** **OPEN ACCESS**
- 775–784** **Facilitating Neuron-Specific Genetic Manipulations in *Drosophila melanogaster* Using a Split GAL4 Repressor**  
Dolan, Michael-John, Haojiang Luan, William C. Shropshire, Ben Sutcliffe, Benjamin Cocanougher, Robert L. Scott, Shahar Frechter, Marta Zlatic, Gregory S. X. E. Jefferis, and Benjamin H. White  
**OPEN ACCESS**
- GENOME INTEGRITY AND TRANSMISSION
- 785–800** **Properties of Mitotic and Meiotic Recombination in the Tandemly-Repeated *CUP1* Gene Cluster in the Yeast *Saccharomyces cerevisiae***  
Zhao, Ying, Margaret Dominska, Aleksandra Petrova, Halle Bagshaw, Robert J. Kokoska, and Thomas D. Petes  
**OPEN ACCESS**
- 801–809** **Correlation of Meiotic DSB Formation and Transcription Initiation Around Fission Yeast Recombination Hotspots**  
Yamada, Shintaro, Mika Okamura, Arisa Oda, Hiroshi Murakami, Kunihiro Ohta, and Takatomi Yamada
- 811–828** **A Slowed Cell Cycle Stabilizes the Budding Yeast Genome**  
Vinton, Peter J. and Ted Weinert
- 829–842** **GSK-3 $\beta$  Homolog Rim11 and the Histone Deacetylase Complex Ume6-Sin3-Rpd3 Are Involved in Replication Stress Response Caused by Defects in Dna2**  
Demin, Annie Albert, Miju Lee, Chul-Hwan Lee, and Yeon-Soo Seo
- 843–857** **Roles for the Rad27 Flap Endonuclease in Mitochondrial Mutagenesis and Double-Strand Break Repair in *Saccharomyces cerevisiae***  
Nagarajan, Prabha, Christopher T. Prevost, Alexis Stein, Rachel Kasimer, Lidza Kalifa, and Elaine A. Sia
- GENE EXPRESSION
- 859–871** **F-Box Protein XREP-4 Is a New Regulator of the Oxidative Stress Response in *Caenorhabditis elegans***  
Wu, Cheng-Wei, Ying Wang, and Keith P. Choe
- CELLULAR GENETICS
- 873–888** **The Hippo Pathway Maintains the Equatorial Division Plane in the Ciliate *Tetrahymena***  
Jiang, Yu-Yang, Wolfgang Maier, Ralf Baumeister, Gregory Minevich, Ewa Joachimiak, Zheng Ruan, Natarajan Kannan, Diamond Clarke, Joseph Frankel, and Jacek Gaertig  
**HIGHLIGHTED ARTICLE**
- 889–904** **Interaction Between Familial Transmission and a Constitutively Active Immune System Shapes Gut Microbiota in *Drosophila melanogaster***  
Mistry, Rupal, Ilias Kounatidis, and Petros Ligoxygakis  
**OPEN ACCESS**

- 905–918 **Regulation of Notch Signaling by the Heterogeneous Nuclear Ribonucleoprotein Hrp48 and Deltex in *Drosophila melanogaster***  
 Dutta, Debdeep, Maimuna Sali Paul, Ankita Singh, Mousumi Mutsuddi, and Ashim Mukherjee
- 919–937 **The Mitotic Exit Network Regulates Spindle Pole Body Selection During Sporulation of *Saccharomyces cerevisiae***  
 Renicke, Christian, Ann-Katrin Allmann, Anne Pia Lutz, Thomas Heimerl, and Christof Taxis
- 939–952 **A Genetic Analysis of the *Caenorhabditis elegans* Detoxification Response**  
 Fukushige, Tetsunari, Harold E. Smith, Johji Miwa, Michael W. Krause, and John A. Hanover

DEVELOPMENTAL AND BEHAVIORAL GENETICS

- 953–971 **Adipocyte Metabolic Pathways Regulated by Diet Control the Female Germline Stem Cell Lineage in *Drosophila melanogaster***  
 Matsuoka, Shinya, Alissa R. Armstrong, Leesa L. Sampson, Kaitlin M. Laws, and Daniela Drummond-Barbosa

**HIGHLIGHTED ARTICLE**

- 973–984 **Proteomics Analysis Identifies Orthologs of Human Chitinase-Like Proteins as Inducers of Tube Morphogenesis Defects in *Drosophila melanogaster***  
 Zimmerman, Sandra G., Gennifer E. Merrihew, Michael J. MacCoss, and Celeste A. Berg

**HIGHLIGHTED ARTICLE**

- 985–992 **Smurf Downregulates Echinoid in the Amnioserosa To Regulate *Drosophila* Dorsal Closure**  
 Lin, Chiao-Ming, Jiajun Xu, Wen-Ting Yang, Chao Wang, Yu-Chiao Li, Lien-Chieh Cheng, Lei Zhang, and Jui-Chou Hsu

POPULATION AND EVOLUTIONARY GENETICS

- 993–1009 **Asexual but Not Clonal: Evolutionary Processes in Automictic Populations**  
 Engelstädter, Jan
- 1011–1023 **CLEAR: Composition of Likelihoods for Evolve and Resequence Experiments**  
 Iranmehr, Arya, Ali Akbari, Christian Schlötterer, and Vineet Bafna  
**OPEN ACCESS**
- 1025–1035 **Joint Estimation of Relatedness Coefficients and Allele Frequencies from Ancient Samples**  
 Theunert, Christoph, Fernando Racimo, and Montgomery Slatkin
- 1037–1048 **Inferring Demographic History Using Two-Locus Statistics**  
 Ragsdale, Aaron P. and Ryan N. Gutenkunst
- 1049–1079 **Genotypic Complexity of Fisher's Geometric Model**  
 Hwang, Sungmin, Su-Chan Park, and Joachim Krug

**HIGHLIGHTED ARTICLE**

## GENETICS OF COMPLEX TRAITS

- 1081–1089 Genetic Architecture of Phenomic-Enabled Canopy Coverage in *Glycine max***  
Xavier, Alencar, Benjamin Hall, Anthony A. Hearst, Keith A. Cherkauer,  
and Katy M. Rainey  
**OPEN ACCESS**
- 1091–1100 Paternal Genome Elimination in *Liposcelis* Booklice (Insecta: Psocodea)**  
Hodson, Christina N., Phineas T. Hamilton, Dave Dilworth, Chris J. Nelson,  
Caitlin I. Curtis, and Steve J. Perlman
- 1101–1111 Genetic Characterization of Dog Personality Traits**  
Ilska, Joanna, Marie J. Haskell, Sarah C. Blott, Enrique Sánchez-Molano,  
Zita Polgar, Sarah E. Lofgren, Dylan N. Clements, and Pamela Wiener  
**OPEN ACCESS**
- 1113–1126 Inference on the Genetic Basis of Eye and Skin Color in an Admixed  
Population via Bayesian Linear Mixed Models**  
Lloyd-Jones, Luke R., Matthew R. Robinson, Gerhard Moser, Jian Zeng,  
Sandra Beleza, Gregory S. Barsh, Hua Tang, and Peter M. Visscher
- 1127–1138 Moving Beyond Managing Realized Genomic Relationship in Long-Term  
Genomic Selection**  
De Beukelaer, Herman, Yvonne Badke, Veerle Fack, and Geert De Meyer
- 1139–1151 Identification of Ceruloplasmin as a Gene that Affects Susceptibility to  
Glomerulonephritis Through Macrophage Function**  
Chen, Tai-Di, Maxime Rotival, Ling-Yin Chiu, Marta Bagnati, Jeong-Hun Ko,  
Prashant K. Srivastava, Enrico Petretto, Charles D. Pusey, Ping-Chin Lai,  
Timothy J. Aitman, H. Terence Cook, and Jacques Behmoaras  
**OPEN ACCESS**

## GENOME AND SYSTEMS BIOLOGY

- 1153–1167 Experimental Evolution Reveals Favored Adaptive Routes to Cell Aggregation  
in Yeast**  
Hope, Elyse A., Clara J. Amorosi, Aaron W. Miller, Kolena Dang,  
Caiti Smukowski Heil, and Maitreya J. Dunham  
**OPEN ACCESS**