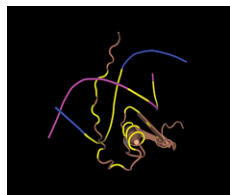


Contents

Vol. 201 No. 3 November 2015



Cover photo: Three-dimensional rendering of the *Aspergillus nidulans* GATA-family AREA zinc finger motif complexed with its DNA target, GATA sequence. DNA strands appear as blue and maroon helices, with the bases that contact the AREA protein indicated in yellow. AREA zinc finger motif appears in brown with residues contacting the GATA sequence indicated in yellow. The zinc finger motif consists of a pair of b-pleated sheets followed by an a-helix and loop. See Rai *et al.*, in this issue. Image courtesy of R. Rai, J. J. Tate, K. Shanmuganatham, M. M. Howe, D. Nelson, and T. G. Cooper.

EDITORIAL

- 811–813** **An Arbitrary Line in the Sand: Rising Scientists Confront the Impact Factor**
DePellegrin, Tracey A. and Mark Johnston

PRIMER

- 815–842** **Genetics on the Fly: A Primer on the *Drosophila* Model System**
Hales, Karen G., Christopher A. Korey, Amanda M. Larracuenté, and David M. Roberts

INVESTIGATIONS

METHODS, TECHNOLOGY, AND RESOURCES

- 843–852** **The Transgenic RNAi Project at Harvard Medical School: Resources and Validation**
Perkins, Elizabeth A., Laura Holderbaum, Rong Tao, Yanhui Hu, Richelle Sopko, Kim McCall, Donghui Yang-Zhou, Ian Flockhart, Richard Binari, Hye-Seok Shim, Audrey Miller, Amy Housden, Marianna Foos, Sakara Randkely, Colleen Kelley, Pema Namgyal, Christians Villalta, Lu-Ping Liu, Xia Jiang, Qiao Huan-Huan, Xia Wang, Asao Fujiyama, Atsushi Toyoda, Kathleen Ayers, Allison Blum, Benjamin Czech, Ralph Neumuller, Dong Yan, Amanda Cavallaro, Karen Hibbard, Don Hall, Lynn Cooley, Gregory J. Hannon, Ruth Lehmann, Annette Parks, Stephanie E. Mohr, Ryu Ueda, Shu Kondo, Jian-Quan Ni, and Norbert Perrimon

STATISTICAL GENETICS AND GENOMICS

- 853–863** **The Double-Reduction Landscape in Tetraploid Potato as Revealed by a High-Density Linkage Map**
Bourke, Peter M., Roeland E. Voorrips, Richard G. F. Visser, and Chris Maliepaard
- 865–870** **An Efficient Genome-Wide Multilocus Epistasis Search**
Kärkkäinen, Hanni P., Zitong Li, and Mikko J. Sillanpää

- 871–884** **A Novel Statistical Model to Estimate Host Genetic Effects Affecting Disease Transmission**

Anacleto, Osvaldo, Luis Alberto García-Cortés, Debby Lipschutz-Powell, John A. Woolliams, and Andrea B. Doeschl-Wilson

HIGHLIGHTED ARTICLE **OPEN ACCESS**

GENOME INTEGRITY AND TRANSMISSION

- 885–895** **Dependence of Human Colorectal Cells Lacking the FBW7 Tumor Suppressor on the Spindle Assembly Checkpoint**
Bailey, Melanie L., Tejomayee Singh, Patricia Mero, Jason Moffat, and Philip Hieter

OPEN ACCESS

- 897–904** **Suppression of Meiotic Recombination by CENP-B Homologs in *Schizosaccharomyces pombe***

Johansen, Peter and Hugh P. Cam

HIGHLIGHTED ARTICLE

- 905–924** **Single-Nucleotide-Specific Targeting of the Tf1 Retrotransposon Promoted by the DNA-Binding Protein Sap1 of *Schizosaccharomyces pombe***
Hickey, Anthony, Caroline Esnault, Anasuya Majumdar, Atreyi Ghatak Chatterjee, James R. Iben, Philip G. McQueen, Andrew X. Yang, Takeshi Mizuguchi, Shiv I. S. Grewal, and Henry L. Levin
- 925–935** **Alternative Transposition Generates New Chimeric Genes and Segmental Duplications at the Maize *p1* Locus**
Wang, Dafang, Chuanhe Yu, Tao Zuo, Jianbo Zhang, David F. Weber, and Thomas Peterson
- 937–949** **Termination of Replication Stress Signaling via Concerted Action of the Slx4 Scaffold and the PP4 Phosphatase**
Jablonowski, Carolyn M., José R. Cussiol, Susannah Oberly, Askar Yimit, Attila Balint, TaeHyung Kim, Zhaolei Zhang, Grant W. Brown, and Marcus B. Smolka
- 951–961** **Stimulation of Chromosomal Rearrangements by Ribonucleotides**
Conover, Hailey N., Scott A. Lujan, Mary J. Chapman, Deborah A. Cornelio, Rabab Sharif, Jessica S. Williams, Alan B. Clark, Francheska Camilo, Thomas A. Kunkel, and Juan Lucas Argueso
HIGHLIGHTED ARTICLE
- 963–975** **Elevated Genome-Wide Instability in Yeast Mutants Lacking RNase H Activity**
O’Connell, Karen, Sue Jinks-Robertson, and Thomas D. Petes
HIGHLIGHTED ARTICLE
- GENE EXPRESSION**
- 977–987** **Rapid Degradation of Host mRNAs by Stimulation of RNase E Activity by Srd of Bacteriophage T4**
Qi, Dan, Abdulraheem M. Alawneh, Tetsuro Yonesaki, and Yuichi Otsuka
- 989–1016** **Nuclear Gln3 Import Is Regulated by Nitrogen Catabolite Repression Whereas Export Is Specifically Regulated by Glutamine**
Rai, Rajendra, Jennifer J. Tate, Karthik Shanmuganatham, Martha M. Howe, David Nelson, and Terrance G. Cooper
- 1017–1030** **MicroRNAs and Their Targets Are Differentially Regulated in Adult and Neonatal Mouse CD8+ T Cells**
Wissink, Erin M., Norah L. Smith, Roman Spektor, Brian D. Rudd, and Andrew Grimson
OPEN ACCESS
- 1031–1045** **The Abundant Histone Chaperones Spt6 and FACT Collaborate to Assemble, Inspect, and Maintain Chromatin Structure in *Saccharomyces cerevisiae***
McCullough, Laura, Zaily Connell, Charisse Petersen, and Tim Formosa
- CELLULAR GENETICS**
- 1047–1060** **Asymmetric Wnt Pathway Signaling Facilitates Stem Cell-Like Divisions via the Nonreceptor Tyrosine Kinase FRK-1 in *Caenorhabditis elegans***
Mila, Danielle, Adriana Calderon, Austin T. Baldwin, Kelsey M. Moore, McLane Watson, Bryan T. Phillips, and Aaron P. Putzke
HIGHLIGHTED ARTICLE

- 1061–1070 **New Regulators of Clathrin-Mediated Endocytosis Identified in *Saccharomyces cerevisiae* by Systematic Quantitative Fluorescence Microscopy**
Farrell, Kristen B., Caitlin Grossman, and Santiago M. Di Pietro
- 1071–1085 **Regulation of Notch Signaling by an Evolutionary Conserved DEAD Box RNA Helicase, Maheshvara in *Drosophila melanogaster***
Surabhi, Satya, Bipin K. Tripathi, Bhawana Maurya, Pradeep K. Bhaskar, Ashim Mukherjee, and Mousumi Mutsuddi
DEVELOPMENTAL AND BEHAVIORAL GENETICS
- 1087–1102 **Disruption of Endocytosis with the Dynamin Mutant *shibire^{ts1}* Suppresses Seizures in *Drosophila***
Kroll, Jason R., Karen G. Wong, Faria M. Siddiqui, and Mark A. Tanouye
HIGHLIGHTED ARTICLE
- 1103–1116 **A New Player in the Spermiogenesis Pathway of *Caenorhabditis elegans***
LaMunyon, Craig W., Ubaydah Nasri, Nicholas G. Sullivan, Misa A. Shaw, Gaurav Prajapati, Matthew Christensen, Daniel Elmatari, and Jessica N. Clark
- 1117–1131 **Actin Cytoskeletal Organization in *Drosophila* Germline Ring Canals Depends on Kelch Function in a Cullin-RING E3 Ligase**
Hudson, Andrew M., Katelynn M. Mannix, and Lynn Cooley
POPULATION AND EVOLUTIONARY GENETICS
- 1133–1141 **Inference Under a Wright-Fisher Model Using an Accurate Beta Approximation**
Tataru, Paula, Thomas Bataillon, and Asger Hobolth
- 1143–1155 **Uncovering Cryptic Asexuality in *Daphnia magna* by RAD Sequencing**
Svendsen, Nils, Celine M. O. Reisser, Marinela Dukić, Virginie Thuillier, Adeline Ségard, Cathy Liautard-Haag, Dominique Fasel, Evelin Hürlimann, Thomas Lenormand, Yan Galimov, and Christoph R. Haag
- 1157–1169 **Inferring Bottlenecks from Genome-Wide Samples of Short Sequence Blocks**
Bunnefeld, Lynsey, Laurent A. F. Frantz, and Konrad Lohse
HIGHLIGHTED ARTICLE OPEN ACCESS
- 1171–1188 **A Bayesian Approach to Inferring Rates of Selfing and Locus-Specific Mutation**
Redelings, Benjamin D., Seiji Kumagai, Andrey Tatarenkov, Liuyang Wang, Ann K. Sakai, Stephen G. Weller, Theresa M. Culley, John C. Avise, and Marcy K. Uyenoyama
- 1189–1200 **Extent of QTL Reuse During Repeated Phenotypic Divergence of Sympatric Threespine Stickleback**
Conte, Gina L., Matthew E. Arnegard, Jacob Best, Yingguang Frank Chan, Felicity C. Jones, David M. Kingsley, Dolph Schluter, and Catherine L. Peichel
HIGHLIGHTED ARTICLE
- 1201–1211 **The Genomic Impacts of Drift and Selection for Hybrid Performance in Maize**
Gerke, Justin P., Jode W. Edwards, Katherine E. Guill, Jeffrey Ross-Ibarra, and Michael D. McMullen
HIGHLIGHTED ARTICLE

- 1213–1228** **The Impact of Recombination Hotspots on Genome Evolution of a Fungal Plant Pathogen**
Croll, Daniel, Mark H. Lendenmann, Ethan Stewart, and Bruce A. McDonald
- GENETICS OF COMPLEX TRAITS
- 1229–1238** **Harnessing Genetic Variation in Leaf Angle to Increase Productivity of *Sorghum bicolor***
Truong, Sandra K., Ryan F. McCormick, William L. Rooney, and John E. Mullet
- 1239–1251** **Simultaneous Estimation of Additive and Mutational Genetic Variance in an Outbred Population of *Drosophila serrata***
McGuigan, Katrina, J. David Aguirre, and Mark W. Blows
- 1253–1262** **Identification of the Bile Acid Transporter *Slco1a6* as a Candidate Gene That Broadly Affects Gene Expression in Mouse Pancreatic Islets**
Tian, Jianan, Mark P. Keller, Angie T. Oler, Mary E. Rabaglia, Kathryn L. Schueler, Donald S. Stapleton, Aimee Teo Broman, Wen Zhao, Christina Kendziorski, Brian S. Yandell, Bruno Hagenbuch, Karl W. Broman, and Alan D. Attie
- GENOME AND SYSTEMS BIOLOGY
- 1263–1274** **Complementation of Yeast Genes with Human Genes as an Experimental Platform for Functional Testing of Human Genetic Variants**
Hamza, Akil, Erik Tammperre, Megan Kofoed, Christelle Keong, Jennifer Chiang, Guri Giaever, Corey Nislow, and Philip Hieter
OPEN ACCESS
- LETTER
- 1275–1277** **A Comment on Fine-Scale Heterogeneity in Crossover Rate in the *garnet-scalloped* Region of the *Drosophila melanogaster* X Chromosome**
Gilliland, William D.