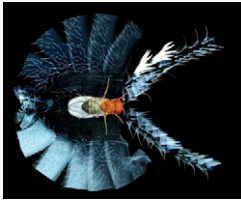


# Contents

Vol. 192 No. 4 December 2012



**Cover photo:** Rapidly evolving, sex-specific phenotypes of *D. bipectinata* (top) and *D. malerkotliana* (bottom). The sex combs (male-specific arrays of modified bristles on the front leg) are shown at the right, and male-specific abdominal pigmentation at the left. The enlarged, rotated sex comb of *D. bipectinata* was regained recently in the evolutionary history of this species following an earlier loss, violating the “Dollo’s law of irreversibility.” Seher *et al.* (pp. 1465-1475) examine the genetic basis of this reversal. Image credit: Digitally inverted, bright-field images of dissected and mounted cuticles, by Artyom Kopp.

- 1151–1163** **PERSPECTIVES**  
**Mammalian Developmental Genetics in the Twentieth Century**  
Artzt, Karen
- 1165–1202** **YEASTBOOK**  
**CELL SIGNALING & DEVELOPMENT**  
**Mitotic Exit and Separation of Mother and Daughter Cells**  
Weiss, Eric L.
- 1203–1234** **CELL STRUCTURE & TRAFFICKING**  
**Mitochondrial Protein Synthesis, Import, and Assembly**  
Fox, Thomas D.
- 1235–1248** **INVESTIGATIONS**  
**METHODS, TECHNOLOGY, AND RESOURCES**  
**Insertional Mutagenesis by a Hybrid PiggyBac and Sleeping Beauty Transposon in the Rat**  
Furushima, Kenryo, Chuan-Wei Jang, Diane W. Chen, Ningna Xiao, Paul A. Overbeek, and Richard R. Behringer
- 1249–1269** **CloudMap: A Cloud-Based Pipeline for Analysis of Mutant Genome Sequences**  
Minevich, Gregory, Danny S. Park, Daniel Blankenberg, Richard J. Poole, and Oliver Hobert
- 1271–1280** **GENOME INTEGRITY AND TRANSMISSION**  
**Unusual Case of Apparent Hypermutation in *Arabidopsis thaliana***  
Sasaki, Taku, Ulf Naumann, Petar Forai, Antonius J. M. Matzke, and Marjori Matzke
- 1281–1293** **GENE EXPRESSION**  
**Targeting of >1.5 Mb of Human DNA into the Mouse X Chromosome Reveals Presence of *cis*-Acting Regulators of Epigenetic Silencing**  
Yang, Christine, Andrea J. McLeod, Allison M. Cotton, Charles N. de Leeuw, Stéphanie Laprise, Kathleen G. Banks, Elizabeth M. Simpson, and Carolyn J. Brown
- 1295–1313** **CELLULAR GENETICS**  
**Structure–Function Dissection of the Frizzled Receptor in *Drosophila melanogaster* Suggests Different Mechanisms of Action in Planar Polarity and Canonical Wnt Signaling**  
Strutt, David, Daisy Madder, Varun Chaudhary, and Peter J. Artymiuk
- 1315–1325** **Genetic Interactions Between UNC-17/VACHt and a Novel Transmembrane Protein in *Caenorhabditis elegans***  
Mathews, Eleanor A., Gregory P. Mullen, Jonathan Hodgkin, Janet S. Duerr, and James B. Rand
- 1327–1345** **DEVELOPMENTAL AND BEHAVIORAL GENETICS**  
**Epigenetic Regulation of Axonal Growth of *Drosophila* Pacemaker Cells by Histone Acetyltransferase Tip60 Controls Sleep**  
Pirooznia, Sheila K., Kellie Chiu, May T. Chan, John E. Zimmerman, and Felice Elefant

- 1347–1358 Unusual and Typical Features of a Novel *Restorer-of-Fertility* Gene of Sugar Beet (*Beta vulgaris* L.)**  
Matsuhira, Hiroaki, Hiroyo Kagami, Masayuki Kurata, Kazuyoshi Kitazaki, Muneyuki Matsunaga, Yuko Hamaguchi, Eiki Hagihara, Minoru Ueda, Michiyo Harada, Aki Muramatsu, Rika Yui-Kurino, Kazunori Taguchi, Hideto Tamagake, Tetsuo Mikami, and Tomohiko Kubo
- 1359–1371 Receptors and Other Signaling Proteins Required for Serotonin Control of Locomotion in *Caenorhabditis elegans***  
Gürel, Güliz, Megan A. Gustafson, Judy S. Pepper, H. Robert Horvitz, and Michael R. Koelle
- 1373–1388 Transmembrane Proteins UNC-40/DCC, PTP-3/LAR, and MIG-21 Control Anterior–Posterior Neuroblast Migration with Left–Right Functional Asymmetry in *Caenorhabditis elegans***  
Sundararajan, Lakshmi and Erik A. Lundquist
- POPULATION AND EVOLUTIONARY GENETICS
- 1389–1409 Gene Functional Trade-Offs and the Evolution of Pleiotropy**  
Guillaume, Frédéric and Sarah P. Otto
- 1411–1432 Long-Term and Short-Term Evolutionary Impacts of Transposable Elements on *Drosophila***  
Lee, Yuh Chwen G. and Charles H. Langley
- 1433–1445 Trade-off Between Selection for Dosage Compensation and Masculinization on the Avian Z Chromosome**  
Wright, Alison E., Hooman K. Moghadam, and Judith E. Mank
- 1447–1454 Estimate of the Spontaneous Mutation Rate in *Chlamydomonas reinhardtii***  
Ness, Rob W., Andrew D. Morgan, Nick Colegrave, and Peter D. Keightley
- 1455–1464 Genomic Imprinting Leads to Less Selectively Maintained Polymorphism on X Chromosomes**  
Santure, Anna W. and Hamish G. Spencer
- 1465–1475 Genetic Basis of a Violation of Dollo’s Law: Re-Evolution of Rotating Sex Combs in *Drosophila bipectinata***  
Seher, Thaddeus D., Chen Siang Ng, Sarah A. Signor, Ondrej Podlaha, Olga Barmina, and Artyom Kopp
- 1477–1482 Genomic Tests of Variation in Inbreeding Among Individuals and Among Chromosomes**  
Schraiber, Joshua G., Stephannie Shih, and Montgomery Slatkin
- GENETICS OF COMPLEX TRAITS
- 1483–1491 A Decision Rule for Quantitative Trait Locus Detection Under the Extended Bayesian LASSO Model**  
Mutshinda, Crispin M. and Mikko J. Sillanpää
- 1493–1502 A Comprehensive Genetic Approach for Improving Prediction of Skin Cancer Risk in Humans**  
Vazquez, Ana I., Gustavo de los Campos, Yann C. Klimentidis, Guilherme J. M. Rosa, Daniel Gianola, Nengjun Yi, and David B. Allison
- 1503–1511 Local Ancestry Corrects for Population Structure in *Saccharomyces cerevisiae* Genome-Wide Association Studies**  
Diao, Liyang and Kevin C. Chen
- 1513–1522 Multiple-Trait Genomic Selection Methods Increase Genetic Value Prediction Accuracy**  
Jia, Yi and Jean-Luc Jannink

1523–1532	<b>Genetic Variation in <i>Saccharomyces cerevisiae</i>: Circuit Diversification in a Signal Transduction Network</b> Chin, Brian L., Owen Ryan, Fran Lewitter, Charles Boone, and Gerald R. Fink
1533–1542	<b>More Than the Sum of Its Parts: A Complex Epistatic Network Underlies Natural Variation in Thermal Preference Behavior in <i>Caenorhabditis elegans</i></b> Gaertner, Bryn E., Michelle D. Parmenter, Matthew V. Rockman, Leonid Kruglyak, and Patrick C. Phillips
	GENOME AND SYSTEMS BIOLOGY
1543–1552	<b>Functional Characterization of <i>Drosophila</i> microRNAs by a Novel <i>in Vivo</i> Library</b> Schertel, Claus, Tobias Rutishauser, Klaus Förstemann, and Konrad Basler
	<b>NOTE</b>
	CELLULAR GENETICS
1553–1557	<b>Sister Chromatids Segregate at Mitosis Without Mother–Daughter Bias in <i>Saccharomyces cerevisiae</i></b> Keyes, Brice E., Kenneth D. Sykes, Courtney E. Remington, and Daniel J. Burke
	<b>CORRIGENDUM</b>
1559	<b>Indirect Genetic Effects for Survival in Domestic Chickens (<i>Gallus gallus</i>) Are Magnified in Crossbred Genotypes and Show a Parent-of-Origin Effect</b> Peeters, K., T. T. Eppink, E. D. Ellen, J. Visscher, and P. Bijma
1561–1565	<b>REVIEWER INDEX</b>