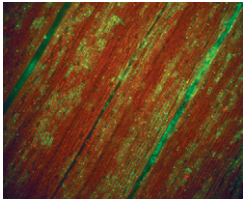


Contents

Vol. 192 No. 2 October 2012



Cover photo: Transgenic and endogenous 22-kDa α -zein promoters are differentially regulated in nonendosperm tissue. In the presence of the transcriptional factors PBF and O2, only the transgenic promoter is activated to express GFP in leaf, although it has been as highly methylated as the endogenous ones. (See Wu and Messing, pp. 507–519; photo courtesy of Yongrui Wu.)

YEASTBOOK

CELL SIGNALING & DEVELOPMENT

- 289–318** **Response to Hyperosmotic Stress**
Saito, Haruo and Francesc Posas

CELL STRUCTURE & TRAFFICKING

- 319–360** **The Ubiquitin–Proteasome System of *Saccharomyces cerevisiae***
Finley, Daniel, Helle D. Ulrich, Thomas Sommer, and Peter Kaiser

INVESTIGATIONS

GENOME INTEGRITY AND TRANSMISSION

- 361–370** **DNA Repair Pathway Choice Is Influenced by the Health of *Drosophila melanogaster***
Wang, Alethea D. and Aneil F. Agrawal

- 371–384** **DNA Replication Origin Function Is Promoted by H3K4 Di-methylation in *Saccharomyces cerevisiae***
Rizzardi, Lindsay F., Elizabeth S. Dorn, Brian D. Strahl, and Jeanette Gowen Cook

- 385–396** **Comparative Oncogenomics Implicates the Neurofibromin 1 Gene (*NF1*) as a Breast Cancer Driver**
Wallace, Marsha D., Adam D. Pfefferle, Lishuang Shen, Adrian J. McNairn, Ethan G. Cerami, Barbara L. Fallon, Vera D. Rinaldi, Teresa L. Southard, Charles M. Perou, and John C. Schimenti

- 397–415** **Multiple Pathways of Duplication Formation with and Without Recombination (*RecA*) in *Salmonella enterica***
Reams, Andrew B., Eric Kofoid, Elisabeth Kugelberg, and John R. Roth

- 417–429** **The Chromosomal Passenger Complex Is Required for Meiotic Acentrosomal Spindle Assembly and Chromosome Biorientation**
Radford, Sarah J., Janet K. Jang, and Kim S. McKim

- 431–440** **Microtubule-Depolymerizing Kinesin KLP10A Restricts the Length of the Acentrosomal Meiotic Spindle in *Drosophila* Females**
Radford, Sarah J., Andrew M. Harrison, and Kim S. McKim

CELLULAR GENETICS

- 441–455** **Integrity and Function of the *Saccharomyces cerevisiae* Spindle Pole Body Depends on Connections Between the Membrane Proteins Ndc1, Rtn1, and Yop1**

Casey, Amanda K., T. Renee Dawson, Jingjing Chen, Jennifer M. Friederichs, Sue L. Jaspersen, and Susan R. Wentle

- 457–466** **Energy-Dependent Modulation of Glucagon-Like Signaling in *Drosophila* via the AMP-Activated Protein Kinase**
Braco, Jason T., Emily L. Gillespie, Gregory E. Alberto, Jay E. Brenman, and Erik C. Johnson

- 467–482** **Diversification of a Protein Kinase Cascade: IME-2 Is Involved in Nonself Recognition and Programmed Cell Death in *Neurospora crassa***
Hutchison, Elizabeth A., Joanna A. Bueche, and N. Louise Glass
- 483–493** **A Cytoplasmic Suppressor of a Nuclear Mutation Affecting Mitochondrial Functions in *Drosophila***
Chen, Shanjun, Marcos T. Oliveira, Alberto Sanz, Esko Kempainen, Atsushi Fukuoh, Barbara Schlicht, Laurie S. Kaguni, and Howard T. Jacobs
- 495–505** **Cellular Memory of Acquired Stress Resistance in *Saccharomyces cerevisiae***
Guan, Qiaoning, Suraiya Haroon, Diego González Bravo, Jessica L. Will, and Audrey P. Gasch
- DEVELOPMENTAL AND BEHAVIORAL GENETICS
- 507–519** **Rapid Divergence of Prolamin Gene Promoters of Maize After Gene Amplification and Dispersal**
Wu, Yongrui and Joachim Messing
- 521–532** **Tissue-Specific Activation of a Single Gustatory Receptor Produces Opposing Behavioral Responses in *Drosophila***
Joseph, Ryan M. and Ulrike Heberlein
- POPULATION AND EVOLUTIONARY GENETICS
- 533–598** **Genomic Variation in Natural Populations of *Drosophila melanogaster***
Langley, Charles H., Kristian Stevens, Charis Cardeno, Yuh Chwen G. Lee, Daniel R. Schrider, John E. Pool, Sasha A. Langley, Charlyn Suarez, Russell B. Corbett-Detig, Bryan Kolaczkowski, Shu Fang, Phillip M. Nista, Alisha K. Holloway, Andrew D. Kern, Colin N. Dewey, Yun S. Song, Matthew W. Hahn, and David J. Begun
- 599–607** **Estimating Allele Age and Selection Coefficient from Time-Serial Data**
Malaspinas, Anna-Sapfo, Orestis Malaspinas, Steven N. Evans, and Montgomery Slatkin
- 609–617** **Estimating Population-Level Coancestry Coefficients by an Admixture F Model**
Karhunen, Markku and Otso Ovaskainen
- 619–639** **Demographic Inference Using Spectral Methods on SNP Data, with an Analysis of the Human Out-of-Africa Expansion**
Lukić, Sergio and Jody Hey
- 641–649** **The Relation of Codon Bias to Tissue-Specific Gene Expression in *Arabidopsis thaliana***
Camiolo, Salvatore, Lorenzo Farina, and Andrea Porceddu
- 651–669** **A Maximum-Likelihood Method to Correct for Allelic Dropout in Microsatellite Data with No Replicate Genotypes**
Wang, Chaolong, Kari B. Schroeder, and Noah A. Rosenberg
- 671–682** **Clonal Interference in the Evolution of Influenza**
Strelkova, Natalja and Michael Lässig
- 683–691** **An Indel Polymorphism in the Hybrid Incompatibility Gene *Lethal Hybrid Rescue of Drosophila* Is Functionally Relevant**
Maheshwari, Shamoni and Daniel A. Barbash
- GENETICS OF COMPLEX TRAITS
- 693–704** **Inferences from Genomic Models in Stratified Populations**
Janss, Luc, Gustavo de los Campos, Nuala Sheehan, and Daniel Sorensen

705–713 Indirect Genetic Effects for Survival in Domestic Chickens (*Gallus gallus*) Are Magnified in Crossbred Genotypes and Show a Parent-of-Origin Effect
Peeters, K., T. T. Eppink, E. D. Ellen, J. Visscher, and P. Bijma

715–728 Maximizing the Reliability of Genomic Selection by Optimizing the Calibration Set of Reference Individuals: Comparison of Methods in Two Diverse Groups of Maize Inbreds (*Zea mays* L.)
Rincent, R., D. Laloë, S. Nicolas, T. Altmann, D. Brunel, P. Revilla, V. M. Rodríguez, J. Moreno-Gonzalez, A. Melchinger, E. Bauer, C-C. Schoen, N. Meyer, C. Giauffret, C. Bauland, P. Jamin, J. Laborde, H. Monod, P. Flament, A. Charcosset, and L. Moreau

729–739 Independent *FLC* Mutations as Causes of Flowering-Time Variation in *Arabidopsis thaliana* and *Capsella rubella*
Guo, Ya-Long, Marco Todesco, Jörg Hagmann, Sandip Das, and Detlef Weigel

GENOME AND SYSTEMS BIOLOGY

741–752 Genetic Annotation of Gain-Of-Function Screens Using RNA Interference and *in Situ* Hybridization of Candidate Genes in the *Drosophila* Wing
Molnar, Cristina, Mar Casado, Ana López-Varea, Cristina Cruz, and Jose F. de Celis

NOTE

CELLULAR GENETICS

753–756 A Redundant Function for the N-Terminal Tail of Ndc80 in Kinetochore–Microtubule Interaction in *Saccharomyces cerevisiae*
Demirel, Pinar B., Brice E. Keyes, Mandovi Chatterjee, Courtney E. Remington, and Daniel J. Burke

CORRIGENDA

757 The Centenary of Janssens’s Chiasmotype Theory
Koszul, Romain, Matthew Meselson, Karine Van Doninck, Jean Vandenhoute, and Denise Zickler

759–760 Surrogate Genetics and Metabolic Profiling for Characterization of Human Disease Alleles
Mayfield, Jacob A., Meara W. Davies, Dago Dimster-Denk, Nick Pleskac, Sean McCarthy, Elizabeth A. Boydston, Logan Fink, Xin Xin Lin, Ankur S. Narain, Michael Meighan, and Jasper Rine