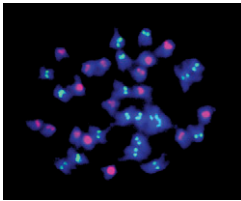


Contents

Vol. 191 No. 2 June 2012



Cover photo: In newly formed *Arabidopsis* allohexaploid plants, the loss or gain of individual chromosomes reshuffles the genome and provides the genetic raw material on which natural selection can act during speciation (see Matsushita *et al.*, pp. 535–547).

THE 2012 GSA HONORS AND AWARDS

- 293–295 **The 2012 Thomas Hunt Morgan Medal**
Wolfner, Mariana F. and Tim Schedl
- 297–298 **The 2012 Genetics Society of America Medal**
Bartel, Bonnie
- 299–300 **The 2012 George W. Beadle Award**
Hawley, R. Scott and Mariana F. Wolfner
- 301–304 **The 2012 Genetics Society of America Elizabeth W. Jones Award for Excellence in Education**
DePellegrin Connelly, Tracey and Utpal Banerjee
- 305–306 **The 2012 Novitski Prize**
Jinks-Robertson, Sue
- 307 **Previous Recipients of GSA Awards**

PERSPECTIVES

- 309–317 **The Centenary of Janssens’s Chiasmotype Theory**
Kozzul, Romain, Matthew Meselson, Karine Van Doninck, Jean Vandenhoute, and Denise Zickler
- 319–346 **La Theorie de la Chiasmotypie. Nouvelle interprétation des cinésés de maturation: Translated by**
Kozzul, Romain and Denise Zickler

YEASTBOOK

CELL SIGNALING & DEVELOPMENT

- 347–387 **Cell Polarization and Cytokinesis in Budding Yeast**
Bi, Erfei and Hay-Oak Park

INVESTIGATIONS

GENOME INTEGRITY AND TRANSMISSION

- 389–406 **Telomere-Targeted Retrotransposons in the Rice Blast Fungus *Magnaporthe oryzae*: Agents of Telomere Instability**
Starnes, John H., David W. Thornbury, Olga S. Novikova, Cathryn J. Rehmeyer, and Mark L. Farman
- 407–417 **Multiple Pathways Suppress Telomere Addition to DNA Breaks in the *Drosophila* Germline**
Beaucher, Michelle, Xiao-Feng Zheng, Flavia Amariei, and Yikang S. Rong

GENE EXPRESSION

- 419–433 **A Non-Mendelian MAPK-Generated Hereditary Unit Controlled by a Second MAPK Pathway in *Podospora anserina***
Lalucque, Hervé, Fabienne Malagnac, Sylvain Brun, Sébastien Kicka, and Philippe Silar

- 435–449 **Analysis of *Cryptococcus neoformans* Sexual Development Reveals Rewiring of the Pheromone-Response Network by a Change in Transcription Factor Identity**
Kruzel, Emilia K., Steven S. Giles, and Christina M. Hull
- CELLULAR GENETICS
- 451–460 **Modular TRAPP Complexes Regulate Intracellular Protein Trafficking Through Multiple Ypt/Rab GTPases in *Saccharomyces cerevisiae***
Zou, Shenshen, Yutao Liu, Xiu Qi Zhang, Yong Chen, Min Ye, Xiaoping Zhu, Shu Yang, Zhanna Lipatova, Yongheng Liang, and Nava Segev
- 461–475 **V-ATPase V₁ Sector Is Required for Corpse Clearance and Neurotransmission in *Caenorhabditis elegans***
Ernstrom, Glen G., Robby Weimer, Divya R. L. Pawar, Shigeki Watanabe, Robert J. Hobson, David Greenstein, and Erik M. Jorgensen
- 477–491 **Developmental Genetics of Secretory Vesicle Acidification During *Caenorhabditis elegans* Spermatogenesis**
Gleason, Elizabeth J., Paul D. Hartley, Melissa Henderson, Katherine L. Hill-Harfe, Paul W. Price, Robby M. Weimer, Tim L. Kroft, Guang-dan Zhu, Suzanne Cordovado, and Steven W. EHernault
- 493–507 **APL-1, the Alzheimer’s Amyloid Precursor Protein in *Caenorhabditis elegans*, Modulates Multiple Metabolic Pathways Throughout Development**
Ewald, Collin Y., Daniel A. Raps, and Chris Li
- DEVELOPMENTAL AND BEHAVIORAL GENETICS
- 509–521 **Synaptic Polarity Depends on Phosphatidylinositol Signaling Regulated by *myo*-Inositol Monophosphatase in *Caenorhabditis elegans***
Kimata, Tsubasa, Yoshinori Tanizawa, Yoko Can, Shingo Ikeda, Atsushi Kuhara, and Ikue Mori
- POPULATION AND EVOLUTIONARY GENETICS
- 523–534 **The Nearly Neutral and Selection Theories of Molecular Evolution Under the Fisher Geometrical Framework: Substitution Rate, Population Size, and Complexity**
Razeto-Barry, Pablo, Javier Díaz, and Rodrigo A. Vásquez
- 535–547 **Allopolyploidization Lays the Foundation for Evolution of Distinct Populations: Evidence From Analysis of Synthetic *Arabidopsis* Allohexaploids**
Matsushita, Starr C., Anand P. Tyagi, Gerard M. Thornton, J. Chris Pires, and Andreas Madlung
- 549–559 **Incompatibility Between X Chromosome Factor and Pericentric Heterochromatic Region Causes Lethality in Hybrids Between *Drosophila melanogaster* and Its Sibling Species**
Cattani, M. Victoria and Daven C. Presgraves
- 561–577 **Population Growth Enhances the Mean Fixation Time of Neutral Mutations and the Persistence of Neutral Variation**
Waxman, D.
- 579–592 **Short-Term Genetic Changes: Evaluating Effective Population Size Estimates in a Comprehensively Described Brown Trout (*Salmo trutta*) Population**
Serbezov, Dimitar, Per Erik Jorde, Louis Bernatchez, Esben Moland Olsen, and L. Asbjørn Vøllestad
- 593–605 **Estimating the Strength of Selective Sweeps from Deep Population Diversity Data**
Messer, Philipp W. and Richard A. Neher

- 607–619** **Population Genetics Models of Local Ancestry**
Gravel, Simon
- GENETICS OF COMPLEX TRAITS
- 621–632** ***APJ1* and *GRE3* Homologs Work in Concert to Allow Growth in Xylose in a Natural *Saccharomyces sensu stricto* Hybrid Yeast**
Schwartz, Katja, Jared W. Wenger, Barbara Dunn, and Gavin Sherlock
- 633–642** **Investigating Natural Variation in *Drosophila* Courtship Song by the Evolve and Resequence Approach**
Turner, Thomas L. and Paige M. Miller
- 643–654** **Functional Genomic Architecture of Predisposition to Voluntary Exercise in Mice: Expression QTL in the Brain**
Kelly, Scott A., Derrick L. Nehrenberg, Kunjie Hua, Theodore Garland, Jr., and Daniel Pomp