

The Activation of a Neocentromere in *Drosophila* Requires Proximity to an Endogenous Centromere

Keith A. Maggert* and Gary H. Karpen†

*Stower's Institute for Medical Research, Kansas City, Missouri 64110 and †The Salk Institute, La Jolla, California 92037

Manuscript received December 22, 2000

Accepted for publication May 10, 2001

ABSTRACT

The centromere is essential for proper segregation and inheritance of genetic information. Centromeres are generally regulated to occur exactly once per chromosome; failure to do so leads to chromosome loss or damage and loss of linked genetic material. The mechanism for faithful regulation of centromere activity and number is unknown. The presence of ectopic centromeres (neocentromeres) has allowed us to probe the requirements and characteristics of centromere activation, maintenance, and structure. We utilized chromosome derivatives that placed a 290-kilobase "test segment" in three different contexts within the *Drosophila melanogaster* genome—immediately adjacent to (1) centromeric chromatin, (2) centric heterochromatin, or (3) euchromatin. Using irradiation mutagenesis, we freed this test segment from the source chromosome and genetically assayed whether the liberated "test fragment" exhibited centromere activity. We observed that this test fragment behaved differently with respect to centromere activity when liberated from different chromosomal contexts, despite an apparent sequence identity. Test segments juxtaposed to an active centromere produced fragments with neocentromere activity, whereas test segments far from centromeres did not. Once established, neocentromere activity was stable. The imposition of neocentromere activity on juxtaposed DNA supports the hypothesis that centromere activity and identity is capable of spreading and is regulated epigenetically.

THE metazoan centromere was first identified cytologically as the region of the primary constriction of a metaphase chromosome (FLEMMING 1880). Later, it was determined that this constriction corresponds to the site of kinetochore formation and polar spindle fiber attachment and is causative in faithful chromosome segregation in mitosis and meiosis (PLUTA *et al.* 1995; RIEDER and SALMON 1998; DOBIE *et al.* 1999). Structurally, the genetic activity of these eukaryotic centromeres is located within large arrays of repetitive DNA (WILLARD 1990; CHOO 1997b), and evidence suggests that chromosome inheritance functions may map to numerous redundant elements within each constriction (ZINKOWSKI *et al.* 1991). This architecture has been referred to as a "regional" centromere (PLUTA *et al.* 1995; WIENS and SORGER 1998). Analysis of the molecular structure of these regional centromeres, which are large and contain hundreds to thousands of kilobases of repetitive DNA, has lagged behind molecular analysis of "point" centromeres (*e.g.*, those of *Saccharomyces cerevisiae*), whose activities have been mapped to <150 bp (HYMAN and SORGER 1995; PLUTA *et al.* 1995; SUNKEL and COELHO 1995; ESPELIN *et al.* 1997).

The ubiquity of simple repeat DNA at regional centro-

meres in most metazoa has fostered the belief that these sequences are responsible for determining centromere numbers and sites (centromere identity; HARRINGTON *et al.* 1997; LOSADA *et al.* 1997; IKENO *et al.* 1998; WILLARD 1998; PLATERO *et al.* 1999; ABAD *et al.* 2000; KOCH 2000). Approaches for *de novo* artificial mammalian chromosome construction have been based on this interpretation (HARRINGTON *et al.* 1997; IKENO *et al.* 1998; WILLARD 1998). However, the sufficiency of repetitive DNA for centromere identity and activity has faced two strong criticisms. First, only a subset of an apparently homogeneous block of satellite repetitive DNA acts as a centromere (SUN *et al.* 1997; VAFA and SULLIVAN 1997; SULLIVAN and WILLARD 1998). Corollaries to this are the observations that centromeres may be turned off without apparent alteration in the sequence of the centromeric heterochromatin (STEINER and CLARKE 1994; EKWALL *et al.* 1997; PAGE and SHAFFER 1998; SULLIVAN and WILLARD 1998), and arrays of alphoid repeat DNA integrated into human chromosomes are not able to assemble kinetochores (WARBURTON and COOKE 1997). Second, centromeres may be activated at sites in the genome that are devoid of repetitive DNA, termed neocentromeres (VOULLAIRE *et al.* 1993; MURPHY and KARPEN 1995b; VIG *et al.* 1996; DU SART *et al.* 1997; WILLIAMS *et al.* 1998; BARRY *et al.* 1999, 2000). Hence, although repeated DNA sequence is found at most centromeres, these DNA sequences are neither sufficient nor necessary for centromere activity.

An alternative model for centromere identity and ac-

Corresponding author: Gary H. Karpen, Molecular Biology and Virology Laboratory, The Salk Institute for Biological Studies, 10010 N. Torrey Pines Rd., La Jolla, California 92037.
E-mail: karpen@salk.edu

tivity involves chromatin structure and epigenetic regulation (STEINER and CLARKE 1994; MURPHY and KARPEN 1995b, 1998; CHOO 1997a, 1998; EKWALL *et al.* 1997; KARPEN and ALLSHIRE 1997; WIENS and SORGER 1998). In this model, centromere identity is determined and propagated by a component or modification that is independent of the sequence of the underlying DNA (KARPEN and ALLSHIRE 1997; MURPHY and KARPEN 1998). Components that could be responsible for centromere identity and activity include chromosome folding/packaging, association of centromere-specific protein or nucleic acid factors, or chemical modification of either DNA or ubiquitous chromatin-associated factors (RUSSO *et al.* 1996).

Epigenetic mechanisms for non-Mendelian inheritance exist in many phyla, including parent-of-origin effects on gene expression or chromosome behavior (SPOFFORD 1976; GOLIC *et al.* 1998), limited mating-type switching (GREWAL and KLAR 1996; THON and FRIIS 1997), telomere identity (BIESSMANN *et al.* 1990; DONALDSON and KARPEN 1997; AHMAD and GOLIC 1999), and paramutation (HOLLIICK *et al.* 1997). In *Drosophila*, the observation of variegated position effects demonstrates that gene regulation is capable of maintaining clonality of gene expression or repression, even through numerous generations (SPOFFORD 1976; DORN *et al.* 1993; CAVALLI and PARO 1998). The common feature of these systems is the differential regulation of identical genetic information, suggesting that chromosomes carry information that is not determined by sequence alone. The epigenetic nature of the centromere was first proposed for *Schizosaccharomyces pombe* (STEINER and CLARKE 1994) and was recently supported by work that has identified centromere-specific factors (ALLSHIRE *et al.* 1994, 1995; EKWALL *et al.* 1999; PARTRIDGE *et al.* 2000). In these studies, centromeres adopt one of two states (low or high activity) without alteration of the underlying DNA.

One of the strongest arguments in favor of epigenetic determination of regional centromere identity is the existence of neocentromeres, which reflects the ability of normally noncentromeric DNA to acquire and maintain centromere activity (VOULLAIRE *et al.* 1993; MURPHY and KARPEN 1995b; VIG *et al.* 1996; DU SART *et al.* 1997; FAULKNER *et al.* 1998; WILLIAMS *et al.* 1998; BARRY *et al.* 1999, 2000; SAFFERY *et al.* 2000). Sequence information from a human neocentromere and the cognate, centromerically inactive predecessor DNA has irrefutably shown that sequence polymorphism is not sufficient to explain differences in centromere activity (BARRY *et al.* 2000; MAGGERT and KARPEN 2000). Two models have been proposed to account for the formation of neocentromeres in humans and *Drosophila*. In the first model, centromere activity spreads from extant centromeric regions to neighboring DNA, where it imparts a stable centromere state (MURPHY and KARPEN 1995b, 1998; WILLIAMS *et al.* 1998). This model predicts that sequences

neighboring an active centromere will be more likely to acquire a neocentromere than will sequences elsewhere in the genome. The second model posits that many sites along a chromosome are intrinsically capable of exhibiting centromere activity and nucleating a kinetochore, but are repressed *in cis* by a more dominant centromere (CHOO 1997a, 1998; PLATERO *et al.* 1999). This model predicts that sequences with innate centromere activity should manifest centromere activity when removed from repression and that proximity to a functional centromere is not necessary for neocentromere activation.

We have distinguished between these models by comparing three substrate chromosomes in their ability to generate fragments that exhibit neocentromere activity. The structures and stabilities of nearly 100 chromosomal derivatives have been analyzed. Structurally acentric, neocentromeric derivatives were recovered only when the liberated fragment was previously juxtaposed to an active centromere. These data support the hypothesis that centromere identity and activity can spread to an unrelated, linked sequence. The stability of neocentromere activity shows that epigenetic factors play a role in initiating and maintaining centromere activity in *Drosophila*.

MATERIALS AND METHODS

Fly stocks: Fly stocks, mutations, and chromosome aberrations are as described in LINDSLEY and ZIMM (1992) or at Flybase (<http://flybase.bio.indiana.edu/>). The *mu-2^c e ry* stock was a gift from Dr. James Mason. The *CyO, SUP^oP{w⁺ y⁺}* stock was a gift from Dr. Pamela Geyer. *Dp8-23, Dpγ238*, and *Tγ1337* have been previously described (LE *et al.* 1995). *Y^SX.Y^L, In(1)EN* is abbreviated *X^ΔY*. All flies were raised on cornmeal food at 25° in glass bottles supplemented with dry active yeast.

γ-Irradiation: Virgin female flies of the appropriate genotype (see below) were aged for 3–5 days and then subjected to 500 rad of γ-radiation from a ⁶⁰Co source. Irradiations were done in plastic tubes (13-mm ID, 19-mm OD, 97-mm height). Males of the appropriate genotype (see below) were added, and flies were allowed to mate and lay eggs for 4 days. The flies were transferred to fresh bottles every 3 days and were discarded 16 days after irradiation. Progeny were scored on days 15 and 20.

Screen of *Dpγ238* and *Dp8-23*: Female virgins were *y¹; mu-2^c e ry; Dpγ238, y⁺ ry⁺ or y¹; mu-2^c e ry; Dp8-23, y⁺ ry⁺*, and males were *Y^SX.Y^L, In(1)EN, y¹; ry⁵⁰⁶* (Figure 3). All male progeny were of genotype *X/0* and thus phenotypically sterile (BRIDGES 1916). All female progeny were *Y^SX.Y^L, In(1)EN, y¹/y¹* and so carried *Y* heterochromatin to suppress position effects on the *yellow⁺* and *rosy⁺* genes (SPOFFORD 1976; MURPHY and KARPEN 1995b) in order to allow all derivatives to be detected. F₁ female progeny that were phenotypically *yellow⁺ rosy⁺* or *yellow⁻ rosy⁻* were discarded. Female progeny that were *yellow⁺ rosy⁻* or *yellow⁻ rosy⁺* were outcrossed to *y¹; ry⁵⁰⁶* males. F₂ and F₃ male progeny were outcrossed to *y¹; ry⁵⁰⁶* virgins to establish *y¹; ry⁵⁰⁶; Dp* stocks. *mu-2^c e ry* chromosomes were not selected against and had no effect on the activity of the neocentromere (data not shown).

Screen of *Ty1337*: Female virgins were y^1 ; $T(2; Dp8-23)\gamma1337$, γ^+/CyO , $SUPorP\{w^+ y^+\}$; $mu-2^c e \gamma$, and males were $Y^S X.Y^L$, $In(1)EN$, y^1 ; γ^{506} (Figure 4). $SUPorP$ was used to mark the CyO chromosome with $yellow+$ in order that it may more easily be scored. F₁ female progeny that were $yellow+$ $rosy-$ or $yellow-$ $rosy+$ were discarded. Female progeny that were $yellow-$ $rosy-$ or $yellow+$ $rosy+$ were outcrossed to y^1 ; Sp/SMI ; γ^{506} males. F₂ Sternopleural male offspring were outcrossed to y^1 ; Sp/CyO , $SUPorP\{w^+ y^+\}$; γ^{506} virgins. F₃ Sternopleural+ male offspring were collected and outcrossed to y^1 ; Sp/CyO , $SUPorP\{w^+ y^+\}$; γ^{506} virgins. F₄ Sternopleural+ male and female offspring were bred *inter se* to establish a stock of y^1 ; $Df(Ty1337)/CyO$, $SUPorP\{w^+ y^+\}$; γ^{506} . $mu-2^c e \gamma$ chromosomes were not selected against, as mentioned above.

Transmission and brooding tests: Chromosome stability and centromere activity were assayed by crossing single monosomic derivative-bearing males to five y^1 ; γ^{506} females, or single monosomic derivative-bearing females to three y^1 ; γ^{506} males. Offspring were scored for presence or absence of the minichromosome on the basis of phenotype ($yellow+$ $rosy-$ or $yellow-$ $rosy+$). Brooding (single germ cell division) assays were done by outcrossing individual males with new virgin females every day for 10 days. Transmission was determined for each set of females. Cell division rate was taken as one per 10 hr (ASHBURNER 1989). Data for each chromosome derivative, including phenotype, size, and transmission, are available elsewhere (MAGGERT 2000).

Pulsed-field gel electrophoresis, restriction, and Southern blot hybridization: Chromosomes were isolated from embryos, digested, subjected to pulsed-field gel electrophoresis, and hybridized with diagnostic probes as described previously (LE *et al.* 1995; KARPEN 2000).

Cytological preparation and analysis: Chromosome spreads were prepared from salivary glands or from neuroblasts of wandering third instar larvae raised at 18°. Salivary glands were dissected from larvae in 0.7% NaCl and squashed under coverslips in 2% aceto-orcin. Brains were dissected from larvae in 0.7% sodium chloride, incubated in 0.4% sodium citrate for 10 min, and then squashed in methanol:acetic acid:water (at 11:11:2 by volume). Squashed tissues were frozen in liquid nitrogen and then immersed in ethanol and air dried before staining with 1 μ g/ml Hoechst 33258 in phosphate-buffered saline. Images were visualized on a Zeiss Axiophot epifluorescence microscope, captured using an ImagePointR charge-coupled device camera (Photometrics, Tucson, AZ), and analyzed on a Macintosh G3 using IP Lab Spectrum (Signal Analytics, Vienna, VA) and Photoshop 3.0 (Adobe) software.

Inverse PCR and sequencing: DNA was isolated from adult flies by homogenization in 100 mM Tris pH 8.2, 50 mM ethylenediaminetetraacetic acid supplemented with 1% sodium dodecylsulfate and 0.5 μ g proteinase K, and allowed to incubate for 1 hr at 65°. The sample was phenol extracted twice, precipitated in ethanol, and resuspended in TE supplemented with 1 μ g/ml RNase A. Restriction with *HhaI* proceeded in restriction buffer (New England Biolabs, Beverly, MA) for 2 hr before being heat inactivated at 65° for 15 min. The mix was allowed to ligate with 2 units T4 DNA Ligase (New England Biolabs) in 400 μ l volume overnight at 4°. The sample was precipitated in ethanol, and 1/75 of the reaction was subjected to polymerase chain reaction [reaction mix contained 2 μ M each dNTP, 10 μ M each primer, and 2 units *Taq* polymerase (Perkin-Elmer, Norwalk, CT)]. Reaction proceeded in a Perkin-Elmer 9600 thermocycler at 94° for 2 min, followed by 35 cycles of 94° for 45 sec, 60° for 45 sec, and 72° for 4 min, with a final extension at 72° for 6 min. Bands were run on an agarose gel, excised, and reamplified under the same conditions. The product reaction was sent for automated sequencing on an ABI automated sequencer.

Primer sets for the amplification of the *Dp γ 238* breakpoint were CGTGTACTACTTGCAGAGCGG and GTTACGTACTA TATATCAAATCTAGCAAGC. The sequence of the left arm of the inversion in *Dp γ 238* is TAATTATTAATCGATGGGT GGATA, AGAATTAATTAAGTGCAGT, where the sequence before the comma is from the *yellow* locus and the sequence after the comma is from *Maupiti* [the first A after the comma refers to base 76672 in *Maupiti* (J. WAHLSTROM, X. SUN, H. LE and G. KARPEN, unpublished results)]. The right arm of the inverted chromosome has sequence CTACAATATCCTTTA TGATACTGTCATCGATCACATTTCGATCGATCGATCAATT TGAAACTC, where the sequence before the underline is from the *yellow* gene, the sequence after the underline is from *Maupiti*, and the underlined sequence is novel.

Primer sets for the amplification of the *Ty1337* breakpoint were GCAATGTTCCAGGACAAAGG and TAATCCTCTTC TGTGGACCG. The sequence of the 2^p; *Dp8-23*^p element of *T(2; Dp8-23) γ 1337* is TTTTATTTGTATGCCTTTTCACCAT TTTGGTGA~~AAATC~~AGCTGTAGCTGATTATGTTGGTATA GGTGT, where the sequence before the underline is from the *yellow* gene, the sequence after the underline is from 2L (P1 clone no. DS00501), and the underlined sequence is novel. The sequence of the *Dp8-23*^p; 2L^p element of *T(2; Dp8-23) γ 1337* is GATTCAGACCTATAAACTTGGCCGTGCTATAT TCCTTGGCAGAGGAATAAATATGACAATATAT, where the sequence before the underline is from distal 2L, the sequence after the underline is from proximal *yellow*, and the underlined sequence is novel.

Statistical analyses: Statistical analyses were done using Excel 98 (Microsoft) or Statistica 4.1 (Statsoft) software. Analyses of breakpoint distributions were done on continuous data and nonparametric data grouped into 5-kb bins; in no case did the results differ appreciably. V-square was opted over chi square in the case of small sample size ($n \leq 6$). Model I linear regression in Figure 7 was done on independent ln-transformed chromosome size and dependent fidelity data (SOKAL and ROHLF 1995).

RESULTS

Structure of minichromosome *Dp8-23*: We have addressed the mechanism of neocentromere formation in *Drosophila melanogaster* by examining the behavior of a common test segment located in different contexts with respect to centromere proximity. We have exploited a supernumerary minichromosomal derivative of the X chromosome, *Dp8-23*, and its derivatives. *Dp8-23* is fully stable, both meiotically and mitotically, contains genetic markers, and is completely dispensable for viability (PARRY and SANDLER 1974; TOWER *et al.* 1993).

Dp8-23 is composed of one megabase of heterochromatin, including a 260-kb region from the distal heterochromatin (numbered ± 0 to +260 kb, Figure 1a), and 740 kb from the base of the X chromosome (numbered +260 to +1000 kb; KARPEN and SPRADLING 1990). These two blocks of heterochromatin were juxtaposed during the ontogeny of *Dp8-23*, and the interface is referred to as the 1.688/1.672 boundary. Additionally, *Dp8-23* contains the terminal 290 kb of the X chromosome (numbered ± 0 to -320 kb), including euchromatin containing the *yellow* locus (y^+), and two 14.5-kb telomeric PZ(γ^+) transgenes (KARPEN and SPRADLING 1992; TOWER *et al.* 1993). Cytological, molecular, and

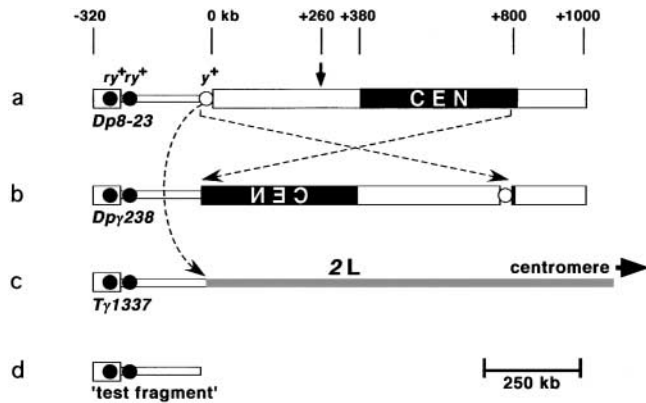


FIGURE 1.—Generation of minichromosome derivatives used in this study. (a) *Dp8-23* contains the centromere (CEN) and 1 Mb of pericentric heterochromatin (thick block) of the X chromosome. The arrow indicates where the 1.688 g/cc satellite DNA and 1.672 g/cc satellite DNA are juxtaposed (LE *et al.* 1995; WILLIAMS *et al.* 1998). Additionally, *Dp8-23* contains 320 kb of euchromatin (thin block), the endogenous *yellow*⁺ gene (open circle, *y*⁺), and subtelomeric DNA (thick block on left), including two introduced PZ{*ry*⁺} elements (solid circles, *ry*⁺). (b) Pericentric inversion (crossed dotted arrows) rearranged the *Dp8-23* chromosome to give *Dpγ238*. (c) Translocation between *Dp8-23* and chromosome 2 (curved dotted arrow) gave rise to *Tγ1337*. (d) The distalmost 290 kb of all three chromosome are identical and are referred to as the test segment when *in situ* and test fragment when freed.

genetic experiments show that the centromere of *Dp8-23* contained within 420 kb of the heterochromatin (from +380 to +800; LE *et al.* 1995; MURPHY and KARPEN 1995b; SUN *et al.* 1997). The 290-kb segment distal to *yellow* (−30 to −320 kb) is referred to as the test segment (Figure 1d) and has never been observed to manifest centromere activity in over 75 years of radiation-induced and meiotic recombination-induced structural alteration of the parental X chromosome (LINDSLEY and ZIMM 1992).

Structure of minichromosome *Dpγ238*: *Dpγ238* is a pericentric inversion derivative of *Dp8-23* that breaks distal to *yellow* and very close to the centromere on the right arm (LE *et al.* 1995; Figure 1b). This inversion placed the *yellow* gene within centric heterochromatin, which results in variegated effects on *yellow* expression. The inversion event also juxtaposed the test segment to the active centromere of *Dpγ238*. The test segment is marked with the PZ{*ry*⁺} elements, and all euchromatic DNA distal to the inversion breakpoint are identical to those of *Dp8-23* (WILLIAMS *et al.* 1998).

The euchromatic inversion breakpoint of *Dpγ238* was known to lie closely distal to *yellow* (LE *et al.* 1995), and the heterochromatic breakpoint was thought to lie at the boundary of the centromere and the outlying centric heterochromatin. We exactly mapped the euchromatic and centric breakpoints of *Dpγ238* by utilizing inverse polymerase chain reaction (PCR) to regions of the euchromatin near the *yellow* locus. The sequences

of both inversion breakpoints are reported in MATERIALS AND METHODS.

The centromere from a related minichromosome, *Dpγ1230*, has been cloned and partially sequenced (SUN *et al.* 1997; J. WAHLSTROM, X. SUN, H. LE and G. KARPEN, unpublished results). When the sequence of the centric breakpoint of *Dpγ238* was compared to the sequence of the *Dpγ1230* centromeric region, we determined that the heterochromatic *Dpγ238* breakpoint was within the centromere, ~3 kb inside the right end of *Maupiti*. *Maupiti* is a previously identified cluster of degenerate transposable elements and A+T-rich sequence at one end of the molecularly defined centromere (SUN *et al.* 1997; J. WAHLSTROM, X. SUN, H. LE and G. KARPEN, unpublished results). This finding shows that the test segment of *Dpγ238* (−30 through −320 kb) is adjacent to a region known to behave as a centromere (Figure 1b).

Structure of translocation chromosome *Tγ1337*: In previous studies, γ -irradiation of *Dp8-23* produced a number of internal deficiencies and translocations (LE *et al.* 1995). *Tγ1337* was characterized as a translocation involving exchange of material between *Dp8-23* and chromosome 2. Salivary gland chromosomes from individuals heterozygous for *T(2;Dp8-23)γ1337* were used to determine the location of the chromosome 2 breakpoint. The tip of 2L was consistently bifurcated and showed a different banding pattern in both halves (Figure 2a). Consensus from numerous spreads suggests that the breakpoint lies within salivary gland region 21B. *T(Dp8-23^p;2^D)γ1337* chromosomes were not visible in these preparations, possibly due to their small size and inclusion in the chromocenter. Two small chromosomes were visible in neuroblast squashes from homozygous individuals (Figure 2b, arrows), indicating that the translocation was reciprocal (Figure 2c) and that the tip of 2L is carried by the *Dp8-23* centromere in *Tγ1337* animals.

Inverse PCR was used to clone and sequence the translocation breakpoint of *Tγ1337*. The 2L breakpoint of *Tγ1337* lies within P1 clone DS00501 (see MATERIALS AND METHODS). This region of the chromosome is near the telomere, appears to be euchromatic, and is ~20 Mb from centric or centromeric heterochromatin (ADAMS *et al.* 2000).

The *Dp8-23*-linked breakpoint of the *Tγ1337* translocation occurs in the intron of *yellow*, consistent with its *yellow*[−] *rosy*⁺ phenotype. Restriction digests of the *Dp8-23^D* material distal to the breakpoint suggests that the 2^p; *Dp8-23^D* is unaltered in structure. That is, the structure of *Tγ1337* places the *rosy*⁺-containing test segment in a euchromatic context without any other alterations in sequence from that of *Dp8-23* (Figures 1c and 2c).

Rationale for the γ -irradiation screen: We used the above chromosome derivatives to address the role of epigenetic regulation and to determine if proximity to a functional centromere is required for neocentromere

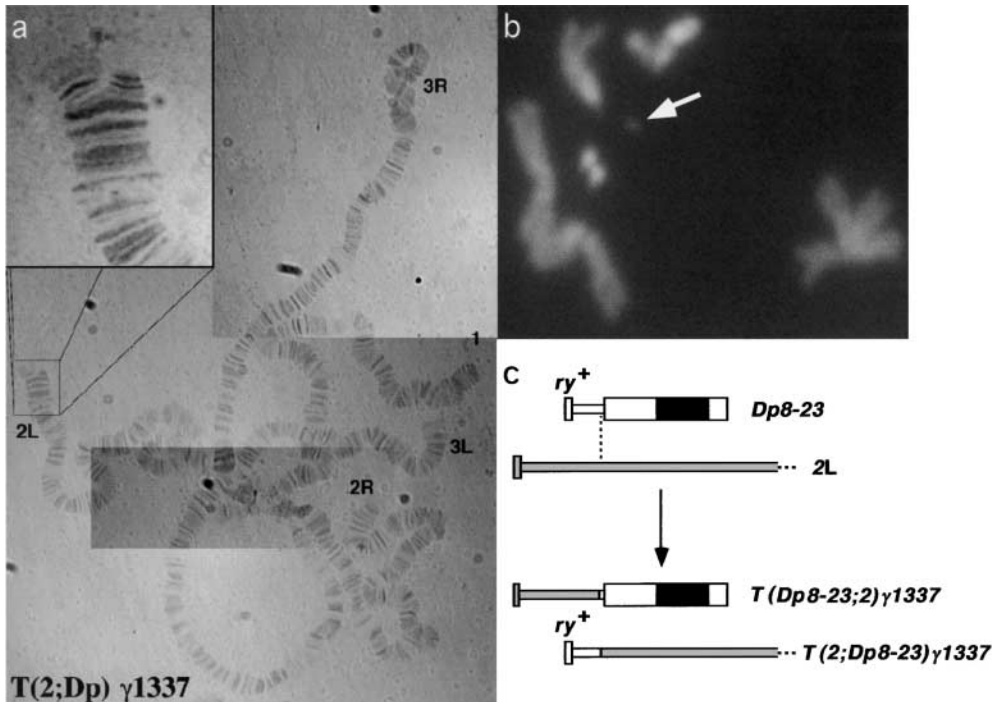


FIGURE 2. — Structure of *Ty1337*. (a) Aceto-orcein-stained salivary gland squash from a *Ty1337/+* individual. Inset shows the bifurcation of 2L, indicating a translocation with distal 2L. (b) Mitotic neuroblast of *Ty1337/Ty1337*, stained with 4',6-diamidino-2-phenylindole, showing a small chromosome that is presumably the *Dp8-23* centromere carrying the tip of 2L (white arrow). (c) Schematic depicting the translocation between 2L and *Dp8-23* (thick and thin bars represent heterochromatin and euchromatin, respectively; solid rectangle represents the centromere; open blocks are *Dp8-23* derived and shaded blocks are chromosome 2 derived).

activation. Previous work demonstrated that the test segment is capable of manifesting neocentromere activity when present in *Dpγ238* (MURPHY and KARPEN 1995b). If neocentromere activation was sequence dependent and involved derepression of latent centromeres, the test segment should behave identically in all three substrate chromosomes. Alternatively, context-dependent recovery of neocentromere activity would suggest that neocentromere function is acquired by spreading of centromere identity from neighboring DNA.

We irradiated *Dp8-23*, *Dpγ238*, and *Ty1337* in parallel. The irradiation was done in females homozygous for the mutagen-sensitive mutation, *mutator-2* (*mu-2*; MASON *et al.* 1984). This mutation confers sensitivity to low doses of ionizing radiation and allows the recovery of terminal deficiencies despite the absence of telomeric repeats (MASON *et al.* 1984, 1986, 1997). This approach has been shown to be fruitful in previous studies of the *Dp8-23* centromere (MURPHY and KARPEN 1995b). MASON *et al.* (1984) and Murphy and Karpen (MURPHY and KARPEN 1995b; MURPHY and KARPEN 1998) have shown that the preponderance of 500-rad-induced break events are one-break terminal deficiencies. The irradiation and subsequent crosses are shown in Figures 3 and 4. All female offspring were scored for the loss of one diagnostic marker (*i.e.*, yellow+ *rosy*− or yellow− *rosy*+), indicating a breakage event within the test segment-containing chromosome.

Irradiation of *Dpγ238*: We irradiated and screened 24,978 *Dpγ238* chromosomes for new breakage events (Figure 3). Twenty-eight new yellow+ *rosy*− derivatives and 49 new yellow− *rosy*+ derivatives were recovered. Transmission tests confirmed that all yellow+ *rosy*− deriva-

tives were transmitted at 100% fidelity, indicating that they retained a fully functional centromere and other components necessary for normal transmission. Pulsed-field gel electrophoresis and Southern hybridization analyses showed that all of these derivatives were at least 1 Mb in size and contained all of the heterochromatin. In agreement with previous irradiation of *Dpγ238*, the yellow− *rosy*+ derivatives fell into three categories based on transmission—"eucentric" (45–55% transmission through females), "midcentric" (20–40% transmission through females), and "structurally acentric" (2–15% transmission through females; see Figure 5, *Dpγ238* column). Transmission correlated with size and, in general,

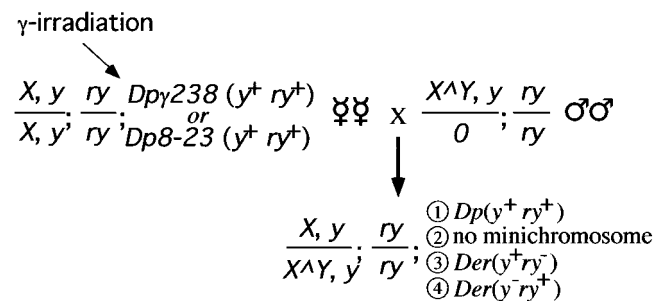


FIGURE 3.—Irradiation screen for *Dp8-23* and *Dpγ238*. Females were irradiated and outcrossed, and F₁ females were screened for presence or absence of the minichromosome or minichromosome derivatives. Class 1 were unbroken minichromosomes and were discarded. Class 2 were null for the supernumerary minichromosome. Class 3 were characterized in yellow+ *rosy*− individuals. Class 4 were characterized in yellow− *rosy*+ individuals. Potential neocentromere activation events were a subset of Class 4. Genetic nomenclature is explained in MATERIALS AND METHODS.

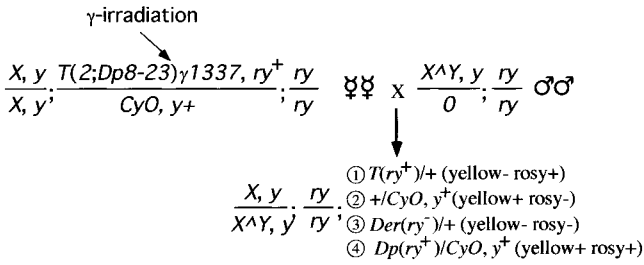


FIGURE 4.—Irradiation screen for *Ty1337*. Females were irradiated and outcrossed, and F_1 females were screened for the loss of the telomeric *rosy*⁺ marker or activation of a neocentromere. Class 1 were unbroken *Ty1337* chromosomes and were discarded. Class 2 contained the homologous *CyO, y*⁺ chromosome. Class 3 were terminal deficiencies of *Ty1337* that lost the *ry*⁺ markers [*Der(ry)*⁻]. Class 4 were potential activation of neocentromeres on the test fragment, followed by segregation with the *CyO, y*⁺ homologue [*Dp(ry)*⁺]. Genetic nomenclature is explained in MATERIALS AND METHODS.

a chromosome derivative was more stable if it contained more centromeric chromatin (discussed below).

Structural analysis of *Dpγ238*-derived chromosomes: We performed structural analyses on the derivatives of *Dpγ238* to assess the distribution of breakpoints and to determine which derivatives were neocentromeric. The *yellow*⁺ *rosy*⁻ derivatives have breakpoints that are dispersed randomly between the proximal PZ{*ry*+} transgene (at -185 kb) and the euchromatic/heterochromatic boundary. The distribution likely conforms to a normal population within the euchromatin ($P = 0.149$; H_0 states that the breakpoints were drawn from a normally distributed population). However, no breaks were recovered that gave rise to *yellow*⁺ *rosy*⁻ chromosomes with only a portion of the centromere (Figure 6a). Although the centromere may be progressively deleted from one direction (from the right in Figure 1b), it may not be removed from the other direction (from the left in Figure 1b; $\chi^2 = 6.03$, d.f. = 1, $P = 0.014$; H_0 states that *yellow*⁺ *rosy*⁻ derivatives that are the product of breaks to the right of the centromere should be as

frequent as *yellow*⁻ *rosy*⁺ SA *Ders* that are products of breaks in the euchromatin). This observation indicates that although a neocentromere may be activated in euchromatin that juxtaposes the centromere, a neocentromere may not be activated in heterochromatin that juxtaposes the centromere (to the right in Figure 1b). Thus, the centromere may be asymmetric in its activity or ability to spread (see DISCUSSION).

The breakpoints leading to *yellow*⁻ *rosy*⁺ derivatives of *Dpγ238* showed a nonnormal distribution (Figure 6a). The breakpoints associated with the generation of normally transmitted derivatives (30 of 49, Figure 6a, eucentric) were clustered within the centric (but noncentromeric) heterochromatin. This distribution may represent a bias in repair and recovery or may represent a true frequency of breaks during irradiation (ASHBURNER 1989; WARTERS and LYONS 1992; OLEINICK *et al.* 1994; LAURENTI *et al.* 1995; AHMAD and GOLIC 1998). The majority of breakpoints lie distal to the 1.688/1.672 breakpoint (Figures 1a and 6a) and occur within the 1.688 g/cc 359-bp repeat from the middle of the X heterochromatin (KARPEN and SPRADLING 1990). This suggests that 1.688 g/cc satellite DNA is more permissive to break generation or subsequent chromosome recovery than is the simple repeat 1.672 g/cc (AATAT_n), which lies proximal to the 1.688/1.672 boundary ($\chi^2 = 2.72$, d.f. = 1, $P = 0.097$; H_0 states that 1.688 g/cc and 1.672 g/cc sequences should have an equal density of breakpoints). Since chromosomes with breakpoints on either side of this landmark are transmitted with identical fidelity, we can conclude that the nonrandom recovery of derivatives with breakpoints proximal to or distal to the 1.688/1.672 boundary is not due to differences in chromosome transmission.

Chromosomes with breaks within the structural centromere also showed a breakpoint distribution that deviated from normal (Figure 6a). There were gaps in the breakpoint distribution within what has been defined as the minimal sequence required for full centromere function [+380 to +800 kb of *Dp8-23*, -30/+0 to +420

	<i>Dpγ238</i>	<i>Dp8-23</i>	<i>Ty1337</i>	
unbroken chromosomes	24,978	94,968	25,910	①
<i>yellow</i> ⁺ <i>rosy</i> ⁻ derivatives	28	21	28	③
<i>yellow</i> ⁻ <i>rosy</i> ⁺ derivatives	43			④
structurally acentric	6	0	0	

FIGURE 5.—Numbers and classes of chromosome derivatives generated in this study. The figure shows the number of chromosomes screened after irradiation, and the number of chromosomes in each phenotypic class. Numbers to the right refer to classes introduced in Figures 3 and 4. Structurally acentric derivatives lack all centric heterochromatin and represent neocentromere activation events. These represent a subset of derivatives of *Dpγ238* and all of the class 4 derivatives of *Dp8-23* and *Ty1337*.

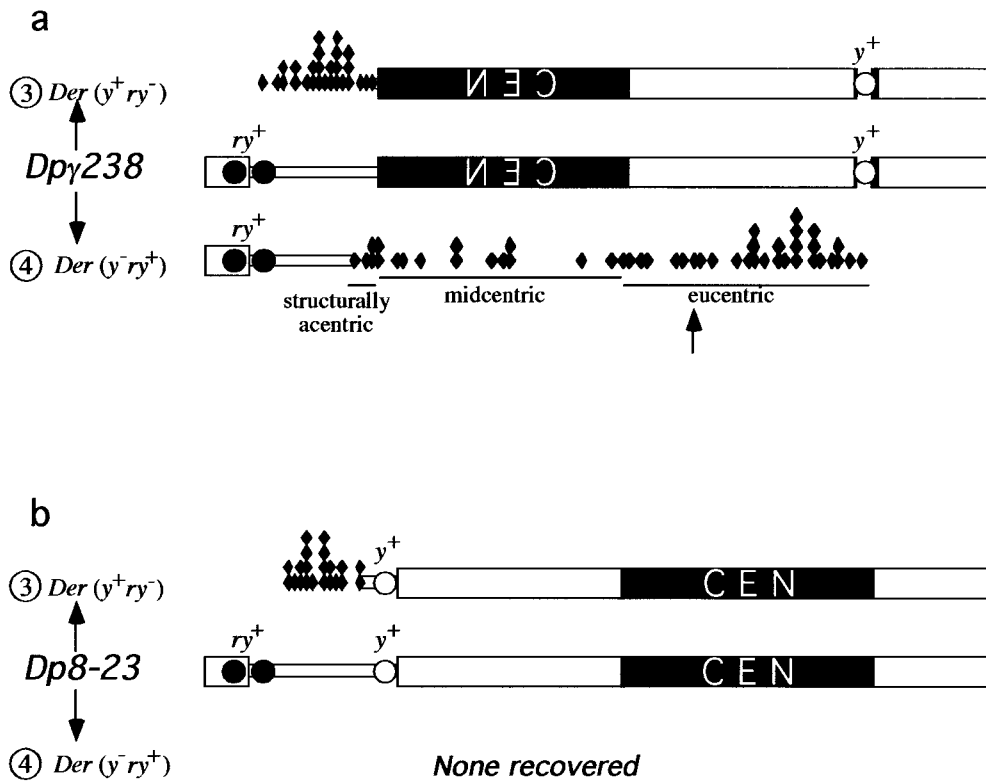


FIGURE 6.—Distribution of breakpoints along *Dpγ238* and *Dp8-23*. (a) The distribution of breaks of *Dpγ238*. *yellow⁺ rosy⁻* derivatives are shown above the *Dpγ238* chromosome, and diamonds represent breakpoints. *yellow⁻ rosy⁺* derivatives are shown below the *Dpγ238* chromosome. The 1.688/1.672 boundary (Figure 1a) is marked with an arrow. (b) The distribution of breaks of *Dp8-23*. *yellow⁺ rosy⁻* derivatives are shown above the *Dp8-23* chromosome, and diamonds represent breakpoints. No *yellow⁻ rosy⁺* derivatives were recovered. Symbols are as in Figure 1.

kb of *Dpγ238* (LE *et al.* 1995; SUN *et al.* 1997)]. These gaps may be due to suppressed breakage within the centromere, or they may be due to preferential recovery of the products of breaks within the centromere. Since two separate studies (here and MURPHY and KARPEN 1995b) observed decreased frequency of breaks in this region, a nonnormal distribution, and an overlap in the regions where breakpoints were not recovered, it is likely that these regions of the centromere are refractory to being broken or recovered at the end of a chromosome (as in AHMAD and GOLIC 1999). Our study cannot determine what features of the centromere are incapable of supporting breaks or the recovery of broken chromosomes.

Analysis of the transmission of structurally acentric derivative chromosomes: Six structurally acentric chromosomes were generated from the irradiation of *Dpγ238*, supporting the findings of a previous study (MURPHY and KARPEN 1995b). These chromosomes lacked all centric and centromeric heterochromatin associated with centromere activity, yet exhibited single mitosis transmission fidelity of approximately 90% (WILLIAMS *et al.* 1998; MAGGERT 2000). These structurally acentric fragments contain kinetochore- and centromere-specific proteins (WILLIAMS *et al.* 1998; LOPEZ *et al.* 2000; BLOWER and KARPEN 2001), indicating that a neocentromere has formed on normally noncentromeric DNA.

Previous studies demonstrated that the size of a neocentromere-containing structurally acentric derivative (SA *Der*) correlates with its transmission (WILLIAMS *et*

al. 1998). By analyzing the size-stability correlation of SA *Ders*, we found that it follows the relationship $f = a + h \ln L$, where f is the fidelity of single mitotic transmission, L is the size of the chromosome in kilobases, a is a constant with value -2.965 , and h is the regression coefficient with numeric value 0.667 . This function and the value of h are derived from transmission data from *Dpγ238* derivatives between 220 and 400 kb (Figure 7, range under arrow) and regresses well with the data (coefficient of determination, $R^2 = 0.919$). This coefficient of determination shows that 91.9% of the stability of neocentromere-containing test fragments can be explained as a function of chromosome size alone. Chromosomes that contain centromere-derived DNA follow this relationship as well as chromosomes without centromere-derived DNA, suggesting that the size dependency described by $f = -2.965 + 0.667 \ln L$ is irrespective of the DNA constitution. A chromosome increases in stability as it increases in size, but not more so if that added chromatin is derived from a centromere, up to the point of 100% fidelity. Extrapolating this trend, a SA *Der* of sufficient size (approximately one-half megabase) would be expected to be fully stable through mitosis and should not differ in transmission from an endogenous centromere. This prediction should hold true for derivatives that contain centromeric DNA (as observed in WILLIAMS *et al.* 1998) or that are completely devoid of centromeric DNA. Direct determination of this latter prediction is impossible in this system, as SA *Ders* of >290 kb include centromeric

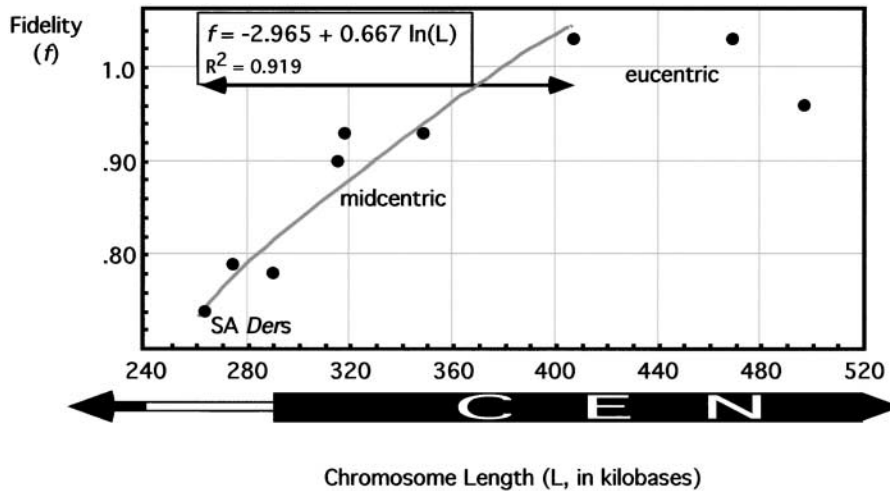


FIGURE 7.—Stabilities of chromosome derivatives through single mitoses. Brooding analyses were done on structurally acentric derivatives, as well as on derivatives with partially deleted centromeres and derivatives with fully intact centromeres. Exponential, logarithmic, and linear regressions were performed to give the best fit curve of data within the range of arrow (gray line, $f = -2.965 + 0.667 \ln L$; $R^2 = 0.919$). x -axis shows chromosome size in kilobases, and y -axis gives probability of a chromosome successfully transmitting through a single germline stem cell division.

chromatin in addition to any resident neocentromere activity. Hence, we cannot use the activation and liberation of neocentromeres from *Dp γ 238* to directly determine whether a neocentromere can drive inheritance of a chromosome as well as a *bona fide* centromere. However, the recruitment of centromere proteins (WILLIAMS *et al.* 1998; BLOWER and KARPEN 2001) argues that neocentromeres do possess normal centromere function and that their instability is due predominantly to defects in antipoleward forces (MURPHY and KARPEN 1995a), sister chromatid cohesion (LOPEZ *et al.* 2000), and other inheritance functions (MURPHY 1998; DOBIE *et al.* 2001).

Irradiation of *Dp8-23*: *Dp8-23* was subject to irradiation in parallel to *Dp γ 238* (Figure 3) to assess the frequency of neocentromere recovery from a test segment separated from an active centromere by 400 kb of heterochromatin. Of the 94,968 chromosomes screened, we recovered 21 *yellow⁺ rosy⁻* derivatives (Figure 5, *Dp8-23* column). Two free *Dp* substrate chromosomes (*Dp γ 238* and *Dp8-23*) were differentially mutable, with *Dp γ 238* producing *yellow⁺ rosy⁻* derivatives at approximately 5-fold higher frequency. The reason for this difference is not known, but may reflect different features of the chromatin structure within euchromatin *vs.* neocentromere-competent chromatin. To compensate for this difference in γ -induced chromosome breakage frequency, we irradiated and scored 3.7-fold more *Dp8-23* chromosomes to recover approximately similar numbers of *yellow⁺ rosy⁻* derivatives. These chromosome derivatives were expected to represent breaks between *yellow* and the proximal PZ{ γ ⁺} transgene, analogous to the *yellow⁺ rosy⁻* derivatives from *Dp γ 238*. The structures of these derivatives were confirmed using pulsed-field gel electrophoresis and Southern analysis (MAGGERT 2000).

The distribution of breakpoints of the *yellow⁺ rosy⁻* derivatives of *Dp8-23* were analyzed in the same fashion as those of *Dp γ 238* (Figure 6b). The euchromatic

breakpoints of *Dp8-23* follow a normal distribution that is statistically indistinguishable from the distribution of breakpoints in *Dp γ 238*-derived chromosomes (Mann-Whitney $U = 255$, $P = 0.438$; Student's $t = 0.179$, d.f. = 44, $P = 0.859$; H_0 states that the breakpoints are drawn from populations with identical distributions).

No *yellow⁻ rosy⁺* derivatives of *Dp8-23* representing neocentromere activation events were recovered. These events may not have been detected because the *yellow⁻ rosy⁺* derivatives may have segregated to the same cell as *yellow⁺ rosy⁻* derivatives. To abrogate the possibility that neocentromeres were activated on the test fragment, we outcrossed 25,000 *yellow⁺ rosy⁺* F₁ females to *yellow⁻ rosy⁻* males and scored for the appearance of new derivatives in F₂. Previous work has shown that *SA Ders* and *yellow⁺ rosy⁻* derivatives segregate at random in females (KARPEN *et al.* 1996). No new *yellow⁻ rosy⁺* or *yellow⁺ rosy⁻* derivatives were detected, indicating that the failure to recover *yellow⁻ rosy⁺* derivatives from the screen of *Dp8-23* was not due to failure to detect them in the presence of reciprocal chromosomes. Instead, the failure to recover *SA Ders* from *Dp8-23* is most likely due to their inability to manifest neocentromere activity.

Irradiation of *Ty1337*: Since small chromosome size compromises the stability of neocentromere-containing chromosomes (WILLIAMS *et al.* 1998; MAGGERT 2000) and could have played a role in our failure to recover neocentromeres from *Dp8-23*, we reasoned that we could alleviate the size restriction of neocentromere liberation by increasing the potential target size of the neocentromere-containing test segment. Since the test segment in *Ty1337* is separated from the endogenous chromosome 2 centromere by ~ 28 Mb (ADAMS *et al.* 2000), the entire chromosome arm was a target for γ -induced breakage (MASON *et al.* 1997). Since larger neocentromere-containing fragments have greater stability, any inherent neocentromere activity on the test segment of *Ty1337* should give rise to stable test fragments consisting of the test fragment plus additional

chromosome 2 material. The proximal limit of potential breaks may be as much as one-half of $2L$, the amount of this arm that can be hyperloid without affecting viability (LINDSLEY *et al.* 1972).

The screen for recovery of neocentromere-containing test fragments from *Ty1337* or of reciprocal break events is detailed in Figure 4. In this screen, the *rosy*⁺ test segment and the *yellow*⁺ gene were on chromosome 2 homologues and so the phenotype of flies bearing neocentromere-containing fragments would be *yellow*⁺ *rosy*⁺, while complementary chromosomes would be found in *yellow*⁻ *rosy*⁻ organisms. We screened 25,910 chromosomes and recovered 28 terminal deficiencies of *Ty1337* that were *rosy*⁻, indicating loss of all or a portion of the test segment (Figure 5, *Ty1337* column). Of these, 3 were confirmed to be terminal deficiencies with breakpoints within the test segment. No *rosy*⁺ neocentromere-containing fragments were recovered. The absence of neocentromere-containing test fragments from *Ty1337* was even more significant considering that the target size was larger than in *Dpγ238* or *Dp8-23* and that liberated fragments would have a higher stability due to their larger size. The failure to recover any neocentromeric fragments from *Ty1337* also eliminates the possibility that the test segment of both *Dp8-23* and *Dpγ238* contain a latent centromere that is repressed by the centric heterochromatin in *Dp8-23*.

DISCUSSION

Neocentromere activation requires centromere juxtaposition: Here we describe irradiation-mutagenesis experiments designed to identify the mechanism of neocentromere formation in *D. melanogaster*. Prior to this study, two models existed to explain the generation of neocentromeres in *Drosophila* and *Homo sapiens*—derepression of latent centromere-competent euchromatic sequences *vs.* centromere spreading (CHOO 1997a, 1998). We distinguished between these models through a genetic assay for neocentromere activation and recovery. Three substrate chromosomes were irradiated, and an identical 290-kb test segment was liberated and genetically assayed for neocentromere activity. The three test segments were identical in molecular structure and differed only in their chromosomal context. In *Dpγ238*, the test segment was juxtaposed to an active centromere; in *Dp8-23*, the test segment was juxtaposed to centric, but centromerically inert DNA; in *Ty1337*, the test segment was juxtaposed to euchromatin. Neocentromeres were activated only from *Dpγ238*, where the test fragment was derived from a position abutting the centromere. In contrast, no neocentromere-containing fragments were recovered from *Dp8-23* or *Ty1337*, despite the ability to generate and recover reciprocal, centromere-containing derivatives. The absence of neocentromeres from *Dp8-23* and *Ty1337* is different from the *Dpγ238* data ($V^2 = 4.084$, d.f. = 1, $P = 0.0435$; H_0 states

that *Dpγ238* and *Dp8-23* will liberate neocentromere-containing fragments at the same rate), suggesting that fragments derived from these different chromatin contexts do not have the neocentromere-forming properties of *Dpγ238*-derived fragments, despite their structural identity.

After irradiation and liberation, fragments that are capable of manifesting neocentromere activity do so only if they were juxtaposed to an active centromere prior to liberation. This result demonstrates that the chromatin context of a fragment affects its centromere activity before or after liberation and that neocentromere activity is not an innate characteristic of a DNA sequence. Additionally, if noncentromeric heterochromatin is repressive for neocentromere activity, then *Ty1337* represents a situation where repressive heterochromatin is separated from the test segment by 20 Mb. Any breaks within that 20 Mb would separate an inherent neocentromere in the test segment from the heterochromatin and allow activation. The absence of neocentromere activation after irradiation of *Ty1337* rules out models in which neocentromere formation occurs due to derepression of latent centromeres in the test fragment. We conclude that some aspect of chromatin structure or DNA modification (LYKO *et al.* 2000) was conferred by the centromere to the juxtaposed euchromatic region in *Dpγ238* and that acquisition of centromere-specific properties was sufficient to impart stable neocentromere activity onto the test fragment. We further propose that neocentromere activation involves spreading of centromere identity factors *in cis*, in a manner similar to that observed for dosage compensation complexes in *Drosophila* (KELLEY *et al.* 1999) or centromere proteins in *Schizosaccharomyces pombe* (PARTRIDGE *et al.* 2000).

It is possible to determine whether a neocentromere was active prior to irradiation or became activated shortly after liberation. Of 28 *yellow*⁺ *rosy*⁻ derivatives of *Dpγ238*, 6 had breakpoints that overlapped with the range of breakpoints of the *yellow*⁻ *rosy*⁺ structurally acentric derivatives (*SA Des*). These 6, then, were complementary to the 6 *SA Des* and represented breaks in the same region of DNA and recovery of the structurally centromeric half of the *Dpγ238* chromosome. The frequencies of recovery of either side of the chromosome were statistically indistinguishable and, although we cannot state that the neocentromere activity existed on the test fragment prior to liberation, we can conclude that the manifestation of neocentromere activity was rapid and efficient following liberation. It is possible that neocentromere activity existed before the chromosome was broken and separation merely allowed the neocentromere to behave independently from the endogenous *Dpγ238* centromere.

Franz Schrader commented on others' (UPCOTT 1937; DARLINGTON 1939) work, ". . . chromosomes are occasionally broken in such a way that the fracture takes its

path through the kinetochore. Kinetochore fragments thus produced evidently may be functional at times for the resulting chromosome fragments continue to participate regularly in the mitotic process" (SCHRADER 1939). The activity on these fragments was manifest immediately, similar to our data for the breakage products derived from *Dpγ238*. These observations are consistent with an iterated model for centromere structure (ZINKOWSKI *et al.* 1991; M. D. BLOWER, B. A. SULLIVAN and G. H. KARPEN, unpublished results) where the centromere may be defined by repeated centromere subunits. These subunits may cooperate when close together (PAGE and SHAFFER 1998), may compete if separated *in cis* (SULLIVAN and WILLARD 1998; AGUDO *et al.* 2000), or may be independently active when present on separated fragments. Thus, it is likely that centromere activity existed on the test segment of *Dpγ238* prior to irradiation and liberation, in response to the inversion that moved the centromere next to the euchromatin. The different frequencies of neocentromere recovery from *Dpγ238* and *Dp8-23* show that centromere competence of the test segment is not inherent to the DNA sequence of the test segment itself. Thus, some feature of *Dpγ238*, and not of the resultant test fragment, is important in eliciting neocentromere activation.

Epigenetic identity of the centromere: The neocentromeres are stable through mitotic and meiotic cell divisions. Factors responsible for conferring centromere identity and activity to neocentromeric DNA could be capable of continuous association with the DNA, or alternatively the DNA could actively recruit these factors each cell division. Our data support the former model, since the latter model predicts that a centromeric sequence would be sufficient for centromere activity, which our results from the irradiations of *Dp8-23* and *Tγ1337* clearly exclude. The sequence independence of neocentromere formation and propagation in *Dpγ238* strongly suggests that centromere identity is determined and propagated by an epigenetic mechanism that may rely on localized DNA or protein modification or the recruitment of centromere-specific factors.

Recently, a constitutive centromere-specific protein has been identified in *Drosophila* (HENIKOFF *et al.* 2000). This molecule, *CID*, is a histone H3 variant, similar to the human centromere-specific protein *CENP-A* (PALMER *et al.* 1991; SULLIVAN *et al.* 1994). The means of centromere-specific recruitment of *CENP-A* proteins is not well understood, but is not likely to be due to sequence-specific binding (SHELBY *et al.* 1997; BARRY *et al.* 1999, 2000) or temporal differences between the replication of centromeric chromatin and bulk chromatin (CSINK and HENIKOFF 1998; SHELBY *et al.* 2000; SULLIVAN and KARPEN 2001), and is instead likely due to recruitment by previously associated *CENP-A* (SHELBY *et al.* 1997; MAGGERT 2000; MAGGERT and KARPEN 2000). The localization of *CENP-A* at the human centromere is not sufficient to induce centromere activity, as

ectopic *CENP-A* incorporation along the entire chromosome is not sufficient to induce holocentric behavior (SHELBY *et al.* 1997; K. F. SULLIVAN, personal communication). The presence of *CID* at the neocentromere of the *SA Des* generated in this study (BLOWER and KARPEN 2001) shows that neocentromeres can acquire a kinetochore-specific chromatin factor. Furthermore, outer kinetochore proteins such as L(1)ZW10 and DYNEIN are also present at these neocentromeres (WILLIAMS *et al.* 1998; STARR *et al.* 1998; LOPEZ *et al.* 2000; BLOWER and KARPEN 2001). Thus, the regulation of *Drosophila* neocentromere identity is likely to be equivalent to that of a normal *Drosophila* centromere, as observed in humans (SAFFERY *et al.* 2000).

The spreading of *Drosophila* centromere activity: *CID*-directed *CID* recruitment may also serve as a mechanism for spreading of centromere activity. Perhaps the establishment of the neocentromere is a by-product of the maintenance mechanism of centromere identity factors. Recruitment of *CID* and other factors to newly synthesized DNA may be inexact, resulting in deposition of centromere identity-determining factors into adjacent regions (Figure 8). Thus, the single activity of *CID*-dependent *CID* recruitment could account for both the epigenetic inheritance and processive spreading of the centromere (MAGGERT 2000). In a normal situation, this could result in "filling" of gaps that may arise in normal centromeres, protecting their coherence through multiple cell divisions.

The question then becomes one of why spreading does not occur more often. Centromeres are not seen to migrate or grow during the life of an organism (WHITE 1954). Whatever keeps a centromere from spreading in a normal chromosome has been defeated in *Dpγ238*, while it remains intact in *Dp8-23* and *Tγ1337*. Discrete elements, either genetic or epigenetic, may flank the centromere and limit spreading. Alternatively, it may be heterochromatin and repeat-sequence DNA itself that prevents a centromere from spreading. In *Dpγ238*, one side of that boundary is removed through chromosome inversion, juxtaposing the centromere to euchromatin. This condition is different from the usual placement of centromeres within large blocks of heterochromatin and may be unique within the collection of chromosome aberrations available in *Drosophila* (LINDSLEY and ZIMM 1992). Although 31 *yellow⁻ rosy⁺* derivatives of *Dpγ238* were recovered that broke in the proximal heterochromatin of the right arm, no cognate neocentromeric *yellow⁺ rosy⁻* derivatives were recovered. Hence, centromere activity can spread into euchromatin, but is apparently incapable of spreading into or through heterochromatin in both *Dp8-23* and *Dpγ238*.

Although heterochromatic mass contributes to centromere kinetic strength (NOVITSKI 1951, 1955; WINES and HENIKOFF 1992), it was also shown that this is not a function of the centromere itself (LINDSLEY and NOVITSKI 1957). We propose that heterochromatin is not

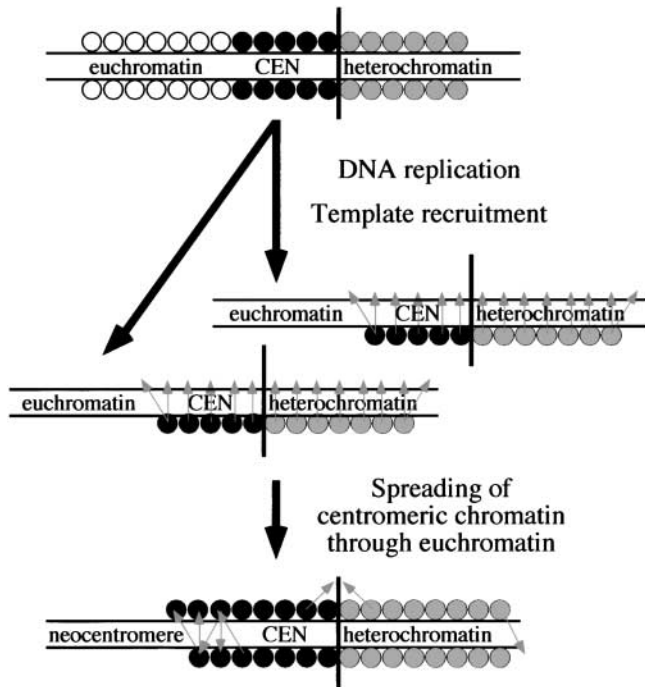


FIGURE 8.—Model for epigenetic maintenance and spreading. The top chromosome shows different regions of DNA packaged as euchromatin (open circles), centromere (solid circles), and heterochromatin (shaded circles). Vertical black line indicates the heterochromatin/centromeric chromatin boundary. After replication (twin arrow), some factors remain associated with the DNA. Templating occurs (light gray arrows), as these factors recruit similar factors to the nascent DNA. This results in properly packaged DNA on both daughter chromosomes. Errors in recruitment can result in factors being recruited slightly out of register, which could cause an expansion of either the centromere or the heterochromatin. Boundaries between centromeres and heterochromatin could be maintained by an equilibrium between these competing forms of chromatin spreading, whereas euchromatin is not able to block centromere spreading and can acquire neocentromere function.

causative in centromere identity, but rather serves to stabilize centromere placement and keeps centromeres from moving or spreading along a chromosome. Only subsequent maturation of the kinetochore, microtubule binding, and/or chromatid cohesion would affect the measured centromere strength (VIG 1982).

Heterochromatin possesses the ability to act as a boundary to DNA replication (LEACH *et al.* 2000) and may act similarly to block centromere movement or spreading. Ironically, the activity of heterochromatin that regulates positioning of the centromere on the chromosome may be its own ability to be epigenetically maintained and spread (SPOFFORD 1976; WAKIMOTO 1998; WALLRATH 1998; FARKAS *et al.* 2000; TALBERT and HENIKOFF 2000; Figure 8). Although spreading of heterochromatin and gene inactivation need not be processive (TALBERT and HENIKOFF 2000), it is clear that genes inappropriately linked to heterochromatin are more likely to be inactivated than are unlinked genes

(SPOFFORD 1976; TALBERT and HENIKOFF 2000; TOLCHKOV *et al.* 2000). If both centromeric chromatin and heterochromatin are maintained efficiently and independently, unable to spread into each other's territory, the boundaries of a centromere would be expected to remain stable over long periods of time (MAGGERT 2000). Although in general euchromatin poses no such barrier, some sequences of euchromatic origin do show epigenetic regulation [*e.g.*, *Polycomb* response elements (CAVALLI and PARO 1998)]. It is possible that these sequences will also pose a barrier to neocentromere spreading. Whole-chromosome kinetochores (holocentric chromosomes) may represent a case where the block to spreading has been defeated throughout the genome, perhaps in response to loss of substantial blocks of heterochromatin.

Forty different neocentromeres have been catalogued in human clinical cases. Their etiology is unknown, but many models have been proposed (CHOO 1997a, 1998; KARPEN and ALLSHIRE 1997; MURPHY and KARPEN 1998; WIENS and SORGER 1998; WILLARD 1998; ABAD *et al.* 2000; KOCH 2000; MAGGERT and KARPEN 2000). The structures of the neocentromeric "marker" chromosomes appear to rule out a simple *in cis*-spreading model (CHOO 1997a; DEPINET *et al.* 1997; WARBURTON *et al.* 2000). However, genomic sensing effects *in trans* have been demonstrated between homologous loci (DONALDSON and KARPEN 1997; COLOT *et al.* 1996; DERNBURG *et al.* 1996; DORER and HENIKOFF 1997; HENIKOFF 1997), and spreading of proteinaceous or ribonucleoprotein complexes *in cis* (PARTRIDGE *et al.* 2000) and *in trans* (KELLEY *et al.* 1999) have been directly observed. We propose that centromere identity may be able to spread *in trans* as well as *in cis* and that human neocentromeres may have arisen through the accidental association of normally noncentromeric DNA with an endogenous centromere during centromere templating. Infrequently, neocentromere activation may also arise spontaneously through the inappropriate recruitment of centromere identity determinants at ectopic sites along the chromosome (MAGGERT and KARPEN 2000). The demonstration that some human neocentromeres are correlated with chromosome aberrations (WARBURTON *et al.* 2000) may provide a similarity with the *Drosophila* minichromosome system and an experimental system in which to investigate these models.

Regardless of the mechanism of neocentromere formation in humans, once *Drosophila* and human neocentromeres are formed, their centromere identity is propagated epigenetically through cell division. Epigenetic regulation may not only occur at this neocentromere of *Drosophila*, but is likely to be a common feature of *bona fide* regional centromeres of *Drosophila* and of other organisms (KARPEN and ALLSHIRE 1997). The role of epigenetic regulation in other aspects of chromosome biology and gene regulation are well established (HENIKOFF 1997; CAVALLI and PARO 1998; WAKIMOTO 1998; AHMAD and GOLIC 1999). We are now challenged

to identify other aspects of chromosome biology that are regulated in a sequence-independent fashion and to determine the biochemical mechanisms responsible for epigenetic propagation of basic chromosomal functions.

We thank Pam Geyer, Jim Mason, Mike McKeown, Dan Lindsley, Barbara Wakimoto, John Newport, Lawrence Goldstein, Terence Murphy, and Kathryn Donaldson for very helpful and fruitful discussions, and Christopher M. Yan for technical assistance. Structural analysis of *Ty1337* was initiated by Kathryn Donaldson and structural analysis of *Dp γ 238* was initiated by Huong Le. We also thank Dan Lindsley, Barbara Wakimoto, Suzanne Eckert, Gary Huckell, Jennifer Armstrong, Mike Blower, Kim Finley, Kumar Hari, Ophelia Papoulas, Beth Sullivan, and Robin Truelove for critical review of this manuscript. This work was done in partial fulfillment of a doctorate of philosophy in biology at the University of California San Diego. Keith Maggert was a Lucille P. Markey Charitable Trust Fellow and a Chapman Charitable Trust Fellow. This work was funded by grants from the American Cancer Society (DB1200) and the National Institutes of Health (R01-GM54549).

LITERATURE CITED

- ABAD, J. P., M. AGUDO, I. MOLINA, A. LOSADA, P. RIPOLL *et al.*, 2000 Pericentromeric regions containing 1.688 satellite DNA sequences show anti-kinetochore antibody staining in prometaphase chromosomes of *Drosophila melanogaster*. *Mol. Gen. Genet.* **264**: 371–377.
- ADAMS, M. D., S. E. CELNIKER, R. A. HOLT, C. A. EVANS, J. D. GOCAYNE *et al.*, 2000 The genome sequence of *Drosophila melanogaster*. *Science* **287**: 2185–2195.
- AGUDO, M., J. P. ABAD, I. MOLINA, A. LOSADA, P. RIPOLL *et al.*, 2000 A dicentric chromosome of *Drosophila melanogaster* showing alternate centromere inactivation. *Chromosoma* **109**: 190–196.
- AHMAD, K., and K. G. GOLIC, 1998 The transmission of fragmented chromosomes in *Drosophila melanogaster*. *Genetics* **148**: 775–792.
- AHMAD, K., and K. G. GOLIC, 1999 Telomere loss in somatic cells of *Drosophila* causes cell cycle arrest and apoptosis. *Genetics* **151**: 1041–1051.
- ALLSHIRE, R. C., J.-P. JAVERZAT, N. J. REDHEAD and G. CRANSTON, 1994 Position effect variegation at fission yeast centromeres. *Cell* **76**: 157–169.
- ALLSHIRE, R. C., E. R. NIMMO, K. EKWALL, J.-P. JAVERZAT and G. CRANSTON, 1995 Mutations derepressing silent centromeric domains in fission yeast disrupt chromosome segregation. *Genes Dev.* **9**: 218–222.
- ASHBURNER, M., 1989 *Drosophila: A Laboratory Handbook*. Cold Spring Harbor Laboratory Press, Cold Spring Harbor, NY.
- BARRY, A. E., E. V. HOWMAN, M. R. CANCELLA, R. SAFFERY and K. H. A. CHOO, 1999 Sequence analysis of an 80 kb human neocentromere. *Hum. Mol. Genet.* **8**: 217–227.
- BARRY, A. E., M. BATEMAN, E. V. HOWMAN, M. R. CANCELLA, K. M. TANTON *et al.*, 2000 The 10q25 neocentromere and its inactive progenitor have identical primary nucleotide sequence: further evidence for epigenetic modification. *Hum. Genome Res.* **10**: 832–838.
- BIESSMANN, H., S. B. CARTER and J. M. MASON, 1990 Chromosome ends in *Drosophila* without telomeric DNA sequences. *Proc. Natl. Acad. Sci. USA* **87**: 1758–1761.
- BLOWER, M. D., and G. H. KARPEN, 2001 The role of *Drosophila* CENP-A/CID in kinetochore formation, cell-cycle progression and interactions with heterochromatin. *Nature Cell Biol.* (in press).
- BRIDGES, C. B., 1916 Non-disjunction as proof of the chromosome theory of heredity. *Genetics* **1**: 1–52.
- CAVALLI, G., and R. PARO, 1998 The *Drosophila Fab-7* chromosomal element conveys epigenetic inheritance during mitosis and meiosis. *Cell* **93**: 505–518.
- CHOO, K. H. A., 1997a Centromere DNA dynamics: latent centromeres and neocentromere formation. *Am. J. Hum. Genet.* **61**: 1225–1233.
- CHOO, K. H. A., 1997b *The Centromere*. Oxford University Press, Oxford.
- CHOO, K. H. A., 1998 Turning on the centromere. *Nat. Genet.* **18**: 3–4.
- COLOT, V., L. MALOISEL and J.-L. ROSSIGNOL, 1996 Interchromosomal transfer of epigenetic states in *Ascomobolus*: transfer of DNA methylation is mechanistically related to homologous recombination. *Cell* **86**: 855–864.
- CSINK, A. K., and S. HENIKOFF, 1998 Something from nothing: the evolution and utility of satellite repeats. *Trends Genet.* **14**: 200–204 (see comments).
- DARLINGTON, C. D., 1939 Misdivision and the genetics of the centromere. *J. Genet.* **37**: 341–364.
- DEPINET, T. W., J. L. ZACKOWSKI, W. C. EARNSHAW, S. KAFFE, G. S. SEKHON *et al.*, 1997 Characterization of neo-centromeres in marker chromosomes lacking detectable alpha-satellite DNA. *Hum. Mol. Genet.* **6**: 1195–1204.
- DERNBURG, A. F., K. W. BROMAN, J. C. FUNG, W. F. MARSHALL, J. PHILIPS *et al.*, 1996 Perturbation of nuclear architecture by long-distance chromosome interactions. *Cell* **85**: 745–759.
- DOBIE, K. W., K. L. HARI, K. A. MAGGERT and G. H. KARPEN, 1999 Centromere proteins and chromosome inheritance: a complex affair. *Curr. Opin. Genet. Dev.* **9**: 206–217.
- DOBIE, K. W., C. M. KENNEDY, V. M. VELASCO, T. M. MCGRATH, J. WEKO, R. W. PATTERSON and G. H. KARPEN, 2001 Identification of chromosome inheritance modifiers in *Drosophila melanogaster*. *Genetics* **157**: 1623–1637.
- DONALDSON, K. M., and G. H. KARPEN, 1997 *Trans*-suppression of terminal deficiency-associated position effect variegation in a *Drosophila* minichromosome. *Genetics* **145**: 325–337.
- DORER, D., and S. HENIKOFF, 1997 Transgene repeat arrays interact with distant heterochromatin and cause silencing *in cis* and *trans*. *Genetics* **147**: 1181–1190.
- DORN, R., V. KRAUSS, G. REUTER and H. SAUMWEBER, 1993 The enhancer of position-effect variegation of *Drosophila*, *E(var) 3-93D*, codes for a chromatin protein containing a conserved domain common to several transcriptional regulators. *Proc. Natl. Acad. Sci. USA* **90**: 11376–11380.
- DU SART, D., M. R. CANCELLA, E. EARLE, J. MAO, R. SAFFERY *et al.*, 1997 A functional neo-centromere formed through activation of a latent human centromere and consisting of non-alpha-satellite DNA. *Nat. Genet.* **16**: 144–153.
- EKWALL, K., T. OLSSON, B. M. TURNER, G. CRANSTON and R. C. ALLSHIRE, 1997 Transient inhibition of histone deacetylation alters the structural and functional imprint at fission yeast centromeres. *Cell* **91**: 1021–1032.
- EKWALL, K., G. CRANSTON and R. C. ALLSHIRE, 1999 Fission yeast mutants that alleviate transcriptional silencing in centromeric flanking repeats and disrupt chromosome segregation. *Genetics* **153**: 1153–1169.
- ESPELIN, C. W., K. B. KAPLAN and P. K. SORGER, 1997 Probing the architecture of a simple kinetochore using DNA-protein crosslinking. *J. Cell Biol.* **139**: 1383–1396.
- FARKAS, G., B. A. LEIBOVITCH and S. C. R. ELGIN, 2000 Chromatin organization and transcriptional control of gene expression in *Drosophila*. *Gene* **253**: 117–136.
- FAULKNER, N. E., B. VIG, C. J. ECHEVERRI, L. WORDEMAN and R. B. VALLEE, 1998 Localization of motor-related proteins and associated complexes to active, but not inactive, centromeres. *Hum. Mol. Genet.* **7**: 671–677.
- FLEMMING, W., 1880 Beitrag zur Kenntnis der Zelle und ihrer Lebenserscheinungen, Teil II. *Arch. Mikrosk. Anat.* **18**: 151–259.
- GOLIC, K. G., M. M. GOLIC and S. PIMPINELLI, 1998 Imprinted control of gene activity in *Drosophila*. *Curr. Biol.* **8**: 1273–1276.
- GREWAL, S. I. S., and A. J. S. KLAR, 1996 Chromosomal inheritance of epigenetic states in fission yeast during mitosis and meiosis. *Cell* **86**: 95–101.
- HARRINGTON, J. J., G. VAN BOKKELEN, R. W. MAYS, K. GUSTASHAW and H. F. WILLARD, 1997 Formation of *de novo* centromeres and construction of first-generation human artificial minichromosomes. *Nat. Genet.* **15**: 1–11.
- HENIKOFF, S., 1997 Nuclear organization and gene expression: ho-

- mologous pairing and long-range interactions. *Curr. Opin. Cell Biol.* **9**: 388–395.
- HENIKOFF, S., K. AHMAD, J. S. PLATERO and B. VAN STEENSEL, 2000 Heterochromatic deposition of centromeric histone H3-like proteins. *Proc. Natl. Acad. Sci. USA* **92**: 716–721.
- HOLLICK, J. B., J. E. DORWEILER and V. L. CHANDLER, 1997 Paramutation and related allelic interactions. *Trends Genet.* **13**: 302–308.
- HYMAN, A. A., and P. K. SORGER, 1995 Structure and function of kinetochores in budding yeast. *Annu. Rev. Cell Dev. Biol.* **11**: 471–495.
- IKENO, M., B. GRIMES, T. OKAZAKI, M. NAKANO, K. SAITOH *et al.*, 1998 Construction of YAC-based mammalian artificial chromosomes. *Nat. Biotech.* **16**: 431–439.
- KARPEN, G. H., 2000 Preparation and analysis of high-molecular-weight DNA in *Drosophila*, pp. 525–539 in *Drosophila Protocols*, edited by W. SULLIVAN, M. ASHBURNER and R. S. HAWLEY. Cold Spring Harbor Laboratory Press, Cold Spring Harbor, NY.
- KARPEN, G. H., and R. C. ALLSHIRE, 1997 The case for epigenetic effects on centromere identity and function. *Trends Genet.* **13**: 489–496.
- KARPEN, G. H., and A. C. SPRADLING, 1990 Reduced DNA polytenization of a minichromosome region undergoing position-effect variegation in *Drosophila*. *Cell* **63**: 97–107.
- KARPEN, G. H., and A. C. SPRADLING, 1992 Analysis of subtelomeric heterochromatin in the *Drosophila* minichromosome *Dp1187* by single *P* element insertional mutagenesis. *Genetics* **132**: 737–753.
- KARPEN, G. H., M.-H. LE and H. LE, 1996 Centric heterochromatin and the efficiency of achiasmate disjunction in *Drosophila* female meiosis. *Science* **273**: 118–122.
- KELLEY, R. L., V. H. MELLER, P. R. GORDADZE, G. ROMAN, R. L. DAVIS and M. I. KURODA, 1999 Epigenetic spreading of the *Drosophila* dosage compensation complex from *roX*RNA genes into flanking chromatin. *Cell* **98**: 513–522.
- KOCH, J., 2000 Neocentromeres and alpha satellite: a proposed structural code for functional human centromere DNA. *Hum. Mol. Genet.* **9**: 149–154.
- LAURENTI, P., Y. GRABA, R. ROSSET and J. PRADEL, 1995 Genetic and molecular analysis of terminal deletions of chromosome 3R of *Drosophila melanogaster*. *Gene* **154**: 177–181.
- LE, M.-H., D. DURICKA and G. H. KARPEN, 1995 Islands of complex DNA are widespread in *Drosophila* centric heterochromatin. *Genetics* **141**: 283–303.
- LEACH, T. J., H. L. CHOTKOWSKI, M. G. WOTRING, R. L. DILWITZ and R. L. GLASER, 2000 Replication of heterochromatin and structure of polytene chromosomes. *Mol. Cell. Biol.* **20**: 6308–6316.
- LINDSLEY, D. L., and E. NOVITSKI, 1957 Localization of the genetic factors responsible for the kinetic activity of *X* chromosomes of *Drosophila melanogaster*. *Genetics* **43**: 790–798.
- LINDSLEY, D. L., and G. G. ZIMM, 1992 *The Genome of Drosophila melanogaster*. Academic Press, San Diego.
- LINDSLEY, D. L., L. SANDLER, B. S. BAKER, A. T. CARPENTER, R. E. DENELL *et al.*, 1972 Segmental aneuploidy and the genetic gross structure of the *Drosophila* genome. *Genetics* **71**: 157–184.
- LOPEZ, J. M., G. H. KARPEN and T. L. ORR-WEAVER, 2000 Sister-chromatid cohesion via MEI-S322 and kinetochore assembly are separable functions of the *Drosophila* centromere. *Curr. Biol.* **10**: 997–1000.
- LOSADA, A., J. P. ABAD and A. VILLASANTE, 1997 Organization of DNA sequences near the centromere of the *Drosophila melanogaster* *Y* chromosome. *Chromosoma* **106**: 503–512.
- LYKO, F., B. H. RAMSAHOYE and R. JAENISCH, 2000 DNA methylation in *Drosophila melanogaster*. *Nature* **408**: 538–540.
- MAGGERT, K. A., 2000 Epigenetic regulation of centromere and neocentromere activity in *Drosophila melanogaster*. Ph.D. Dissertation, University of California San Diego, San Diego.
- MAGGERT, K. A., and G. H. KARPEN, 2000 Acquisition and metastability of centromere identity and function: sequence analysis of a human neocentromere. *Genome Res.* **10**: 725–728.
- MASON, J. M., E. STROBEL and M. M. GREEN, 1984 *mu-2*: mutator gene in *Drosophila* that potentiates the induction of terminal deficiencies. *Proc. Natl. Acad. Sci. USA* **81**: 6090–6094.
- MASON, J. M., R. A. VOELKER, D. ROSEN, A. R. CAMPOS, K. WHITE and J. K. LIM, 1986 Localization of terminal deficiency breakpoints on the *X*-chromosome. *Dros. Inf. Serv.* **63**: 164–165.
- MASON, J. M., L. E. CHAMPION and G. HOOK, 1997 Germ-line effects of a mutator, *mu2*, in *Drosophila melanogaster*. *Genetics* **146**: 1381–1397.
- MURPHY, T. D., 1998 Characterization of *cis*-acting chromosomal elements and *trans*-acting factors required for chromosome inheritance in *Drosophila*. Ph.D. Dissertation, University of California San Diego, San Diego.
- MURPHY, T. D., and G. H. KARPEN, 1995a Interactions between the *nod+* kinesin-like gene and extracentromeric sequences are required for transmission of a *Drosophila* minichromosome. *Cell* **81**: 139–148.
- MURPHY, T. D., and G. H. KARPEN, 1995b Localization of centromere function in a *Drosophila* minichromosome. *Cell* **82**: 599–609.
- MURPHY, T. D., and G. H. KARPEN, 1998 Centromeres take flight: alpha satellite and the quest for the human centromere. *Cell* **93**: 317–320.
- NOVITSKI, E., 1951 The genetic consequences of anaphase bridge formation in *Drosophila*. *Genetics* **37**: 270.
- NOVITSKI, E., 1955 Genetic measures of centromere activity in *Drosophila melanogaster*. *Symp. Genet. Recomb.* **45**: 151–169.
- OLEINICK, N. L., U. BALASUBRAMANIAM, L. XUE and S. CHIU, 1994 Nuclear structure and the microdistribution of radiation damage in DNA. *Int. J. Radiat. Biol.* **66**: 523–529.
- PAGE, S. L., and L. G. SHAFFER, 1998 Chromosome stability is maintained by short intercentromeric distance in functionally dicentric human Robertsonian translocations. *Chromosome Res.* **6**: 115–122.
- PALMER, D. K., K. O'DAY, H. L. TRONG, H. CHARBONNEAU and R. L. MARGOLIS, 1991 Purification of the centromere-specific protein CENP-A and demonstration that it is a distinctive histone. *Proc. Natl. Acad. Sci. USA* **88**: 3734–3738.
- PARRY, D. M., and L. SANDLER, 1974 The genetic identification of a heterochromatic segment on the *X* chromosome of *Drosophila melanogaster*. *Genetics* **77**: 535–539.
- PARTRIDGE, J. F., B. BORGSTRÖM and R. C. ALLSHIRE, 2000 Distinct protein interaction domains and protein spreading in a complex centromere. *Genes Dev.* **14**: 783–791.
- PLATERO, J. S., K. AHMAD and S. HENIKOFF, 1999 A distal heterochromatic block displays centromeric activity when detached from a natural centromere. *Mol. Cell* **4**: 995–1004.
- PLUTA, A. F., A. M. MACKAY, A. M. AINSZTEIN, I. G. GOLDBERG and W. C. EARNSHAW, 1995 The centromere: hub of chromosomal activities. *Science* **270**: 1591–1594.
- RIEDER, C. L., and E. D. SALMON, 1998 The vertebrate cell kinetochore and its roles during mitosis. *Trends Cell Biol.* **8**: 310–318.
- RUSSO, V. E. A., R. A. MARTIENSEN and A. D. RIGGS (Editors), 1996 *Epigenetic Mechanisms of Gene Regulation*. Cold Spring Harbor Laboratory Press, Cold Spring Harbor, NY.
- SAFFERY, R., D. V. IRVINE, B. GRIFFITHS, P. KALITSIS, L. WORDEMAN and K. H. A. CHOO, 2000 Human centromeres and neocentromeres show identical distribution patterns of >20 functionally important kinetochore-associated proteins. *Hum. Mol. Genet.* **9**: 175–185.
- SCHRADER, F., 1939 The structure of the kinetochore at meiosis. *Z. Zellforsch. Mikrosk. Anat. (Chromosoma)* **1**: 230–237.
- SHELBY, R. D., O. VAFA and K. F. SULLIVAN, 1997 Assembly of CENP-A into centromeric chromatin requires a cooperative array of nucleosomal DNA contact sites. *J. Cell Biol.* **136**: 501–513.
- SHELBY, R. D., K. MONIER and K. F. SULLIVAN, 2000 Chromatin assembly at kinetochores is uncoupled from DNA replication. *J. Cell Biol.* **151**: 1113–1118.
- SOKAL, R. R., and F. J. ROHLF, 1995 *Biometry*, Ed. 3. W. H. Freeman, New York.
- SPOFFORD, J., 1976 Position-effect variegation in *Drosophila*, pp. 955–1019 in *The Genetics and Biology of Drosophila*, Vol. 1c, edited by M. ASHBURNER and E. NOVITSKI. Academic Press, London.
- STARR, D. A., B. C. WILLIAMS, T. S. HAYS and M. L. GOLDBERG, 1998 ZW10 helps recruit dynactin and dynein to the kinetochore. *J. Cell Biol.* **142**: 763–774.
- STEINER, N. C., and L. CLARKE, 1994 A novel epigenetic effect can alter centromere function in fission yeast. *Cell* **79**: 865–874.
- SULLIVAN, B. A., and G. H. KARPEN, 2001 Centromere identity in *Drosophila* is not determined *in vivo* by replication timing. *J. Cell Biol.* (in press).
- SULLIVAN, B. A., and H. F. WILLARD, 1998 Stable dicentric *X* chromosomes with two functional centromeres. *Nat. Genet.* **20**: 227–228.
- SULLIVAN, K. F., M. HECHENBERGER and K. MASRI, 1994 Human

- CENP-A contains a histone H3 related histone fold domain that is required for targeting to the centromere. *J. Cell Biol.* **127**: 581–592.
- SUN, X., J. WAHLSTROM and G. KARPEN, 1997 Molecular structure of a functional *Drosophila* centromere. *Cell* **91**: 1007–1019.
- SUNKEL, C. E., and P. A. COELHO, 1995 The elusive centromere: sequence divergence and functional conservation. *Curr. Opin. Genet. Dev.* **5**: 756–767.
- TALBERT, P. B., and S. HENIKOFF, 2000 A reexamination of spreading of position-effect variegation in the *white-rough* region of *Drosophila melanogaster*. *Genetics* **154**: 259–272.
- THON, G., and T. FRIIS, 1997 Epigenetic inheritance of transcriptional silencing and switching competence in fission yeast. *Genetics* **145**: 685–696.
- TOLCHKOV, E. V., V. I. RASHEVA, S. BONACCORSI, T. WESTPHAL and V. A. GVOZDEV, 2000 The size and internal structure of a heterochromatic block determine its ability to induce position effect variegation in *Drosophila melanogaster*. *Genetics* **154**: 1611–1626.
- TOWER, J., G. H. KARPEN, N. CRAIG and A. C. SPRADLING, 1993 Preferential transposition of *Drosophila* P elements to nearby chromosomal site. *Genetics* **133**: 347–359.
- UPCOTT, M., 1937 The behavior of the centromere at meiosis. *Proc. R. Soc. Lond. Ser B* **124**: 336–361.
- VAFAS, O., and K. F. SULLIVAN, 1997 Chromatin containing CENP-A and α -satellite DNA is a major component of the inner kinetochore plate. *Curr. Biol.* **7**: 897–900.
- VIG, B., 1982 Sequence of centromere separation: role of centromeric heterochromatin. *Genetics* **102**: 795–806.
- VIG, B. K., D. LATOUR and M. BROWN, 1996 Localization of anti-CENP antibodies and alphoid sequences in acentric heterochromatin in a breast cancer cell line. *Cancer Genet. Cytogenet.* **88**: 118–125.
- VOULLAIRE, L. E., H. R. SLATER, V. PETROVIC and K. H. A. CHOO, 1993 A functional marker centromere with no detectable alpha-satellite, satellite III, or CENP-B protein: activation of a latent centromere? *Am. J. Hum. Genet.* **52**: 1153–1163.
- WAKIMOTO, B. T., 1998 Beyond the nucleosome: epigenetic aspects of position-effect variegation in *Drosophila*. *Cell* **93**: 321–324.
- WALLRATH, L., 1998 Unfolding the mysteries of heterochromatin. *Curr. Opin. Genet. Dev.* **8**: 147–153.
- WARBURTON, P. E., and H. J. COOKE, 1997 Hamster chromosomes containing amplified human α -satellite DNA show delayed sister chromatid separation in the absence of *de novo* kinetochore formation. *Chromosoma* **106**: 149–159.
- WARBURTON, P. E., M. DOLLED, R. MAHMOOD, A. ALONSO, S. LI *et al.*, 2000 Molecular cytogenetic analysis of eight inversion duplications of human chromosome 13q that each contain a neocentromere. *Am. J. Hum. Genet.* **66**: 1794–1806.
- WARTERS, R. L., and B. W. LYONS, 1992 Variation in radiation-induced formation of DNA double-strand breaks as a function of chromatin structure. *Radiat. Res.* **130**: 309–318.
- WHITE, M. J., 1954 *Animal Cytology and Evolution*, Ed. 2. Cambridge University Press, Cambridge.
- WIENS, G. R., and P. K. SORGER, 1998 Centromeric chromatin and epigenetic effects in kinetochore assembly. *Cell* **93**: 313–316.
- WILLARD, H. F., 1990 Centromeres of mammalian chromosomes. *Trends Genet.* **6**: 410–416.
- WILLARD, H. F., 1998 Human artificial chromosomes coming into focus. *Nat. Biotech.* **16**: 415–416.
- WILLIAMS, B. C., T. D. MURPHY, M. L. GOLDBERG and G. H. KARPEN, 1998 Neocentromere activity of a structurally acentric minichromosome in *Drosophila*. *Nat. Genet.* **18**: 30–37.
- WINES, D. R., and S. HENIKOFF, 1992 Somatic instability of a *Drosophila* chromosome. *Genetics* **131**: 683–691.
- ZINKOWSKI, R. P., J. MEYNE and B. R. BRINKLEY, 1991 The centromere-kinetochore complex: a repeat subunit model. *J. Cell Biol.* **113**: 1091–1110.

Communicating editor: R. S. HAWLEY