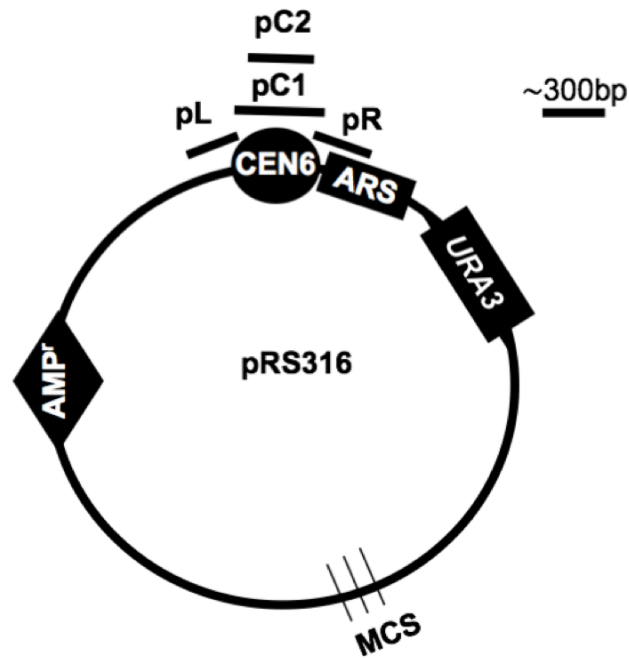


A



B

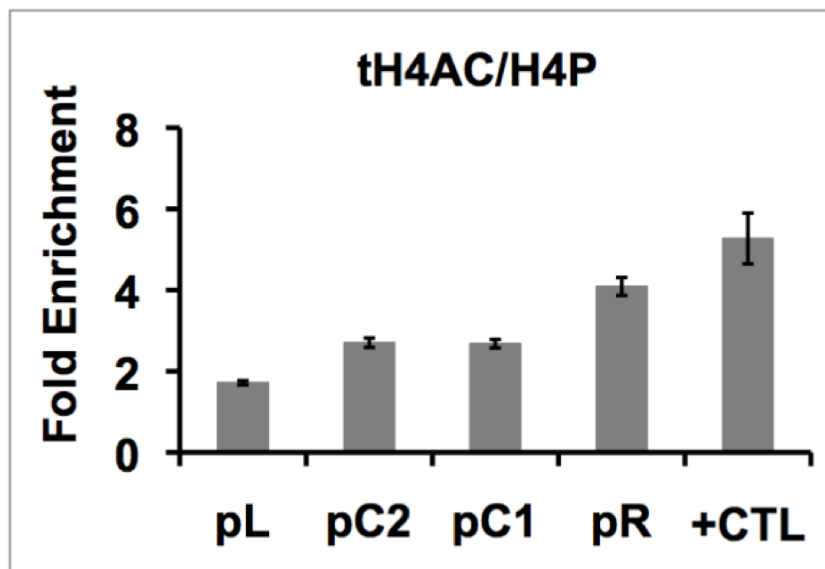


Figure S3 Low Levels of acetylated H4 are Observed at a plasmid CEN. (A) Diagram showing regions analyzed on a plasmid centromere that is identical to CEN VI. To specifically ChIP tACh4 at plasmid CEN VI the chromosomal CEN VI was replaced with CEN XI in an otherwise wild type strain (YMB511). (B) ChIP with antibodies to tetra-acetylated histone H4 (tACh4) to measure the levels of tACh4 at plasmid centromeric (pC1-pC2) and pericentromeric regions (pL and pR). *SNR189* region that contains hyperacetylated H4 serves as a positive control (+CTL). Standard PCR was performed followed by agarose gel electrophoresis and quantification of DNA products stained with EtBr. Bar graphs show mean fold enrichment for tACh4 normalized to total H4 from three biological replicates, with error bars showing standard error of the mean.