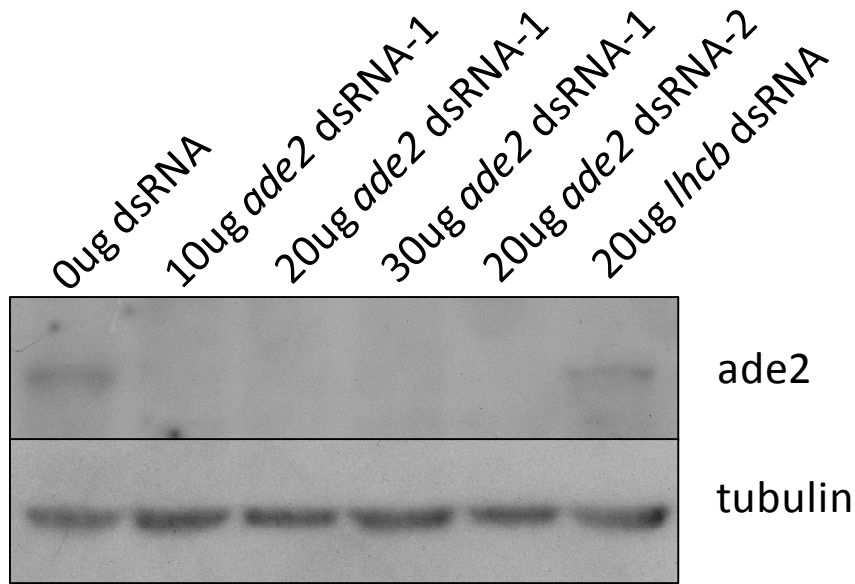


A



B

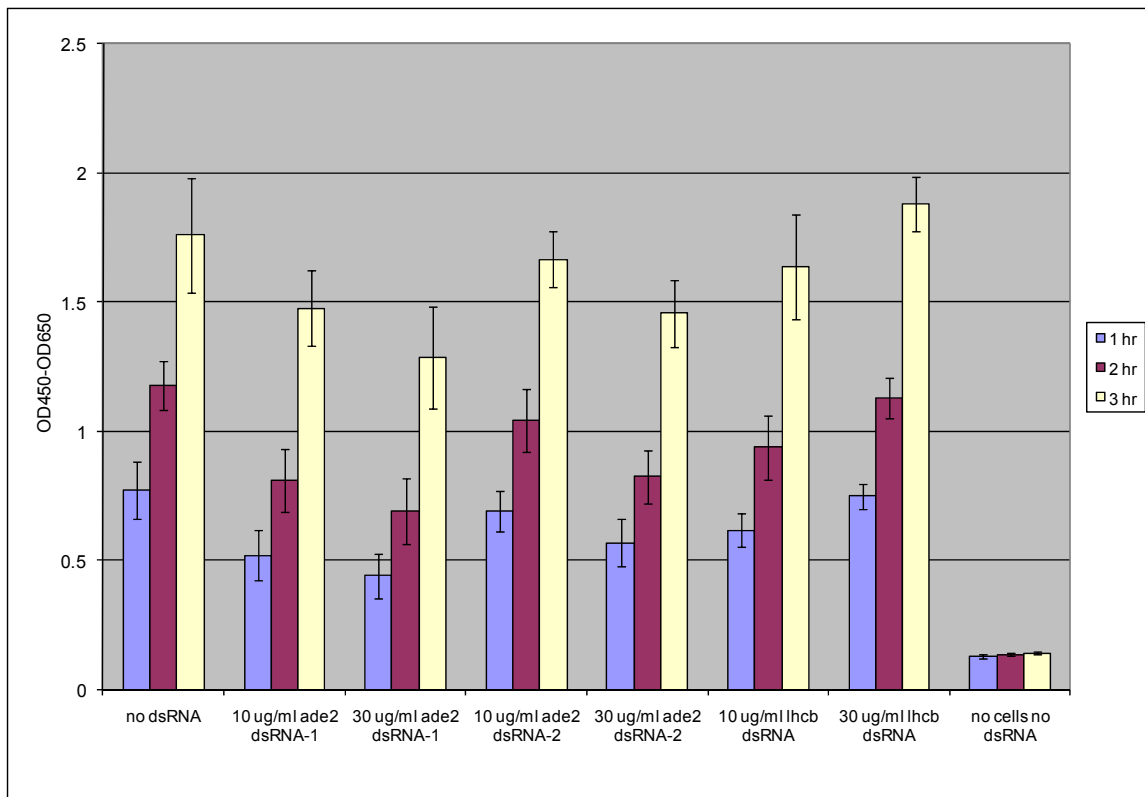


FIGURE S5.—Analysis of S2 cells following treatment with *ade2* dsRNAs and control *Chlamydomonas lhcb* dsRNA. A) Western blot analysis of *ade2* expression; B) Cell metabolic activity 4 days after dsRNA treatment was measured by WST-1 assays, as recommended by Roche Life Sciences. OD measurements were taken at 3 time points. Each dsRNA treatment represents 4 replicates; error bars represent +/- SEM.