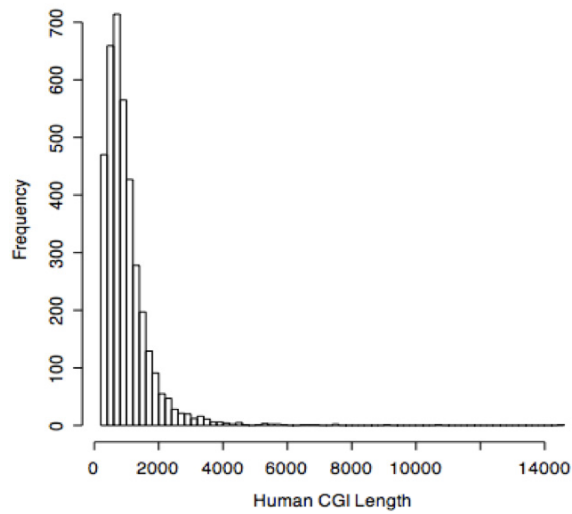


A. Human promoter-CGIs



B. Mouse promoter-CGIs

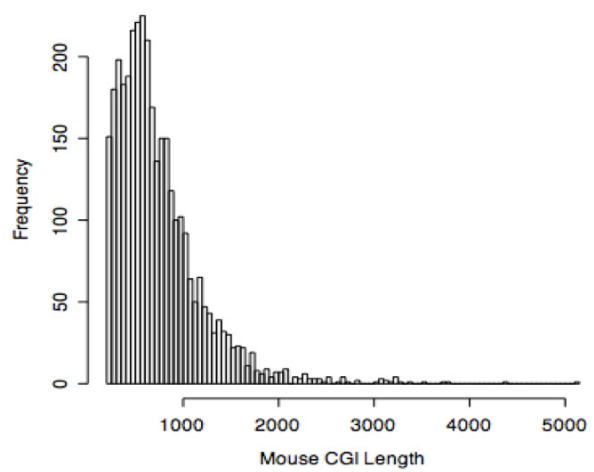


FIGURE S1.—Distribution of promoter-associated CGI lengths. Distribution of lengths of promoter-associated CpG islands (CGIs). Lengths distributions of human and mouse promoter-CGIs are shown in Figure S1. Mouse CGIs are shorter than human CGIs in general. In both species, the length distributions exhibit long tails. In other words, there are very long CGIs. The median CGI lengths are 921 and 800 nucleotides for human and mouse, respectively.