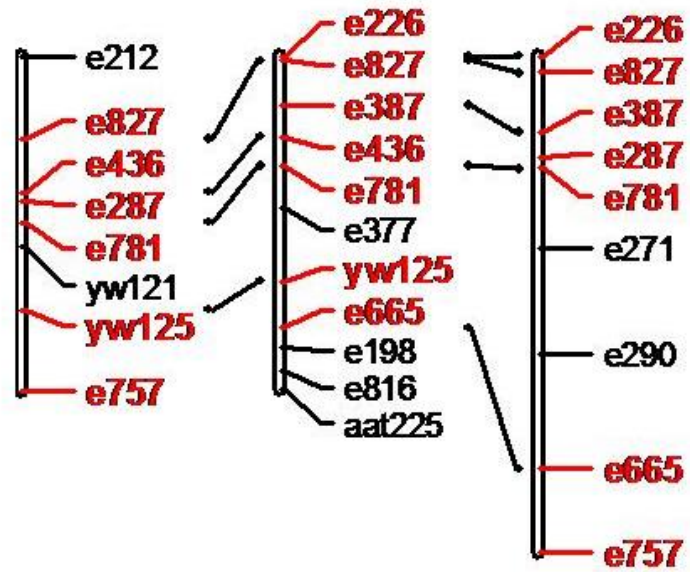
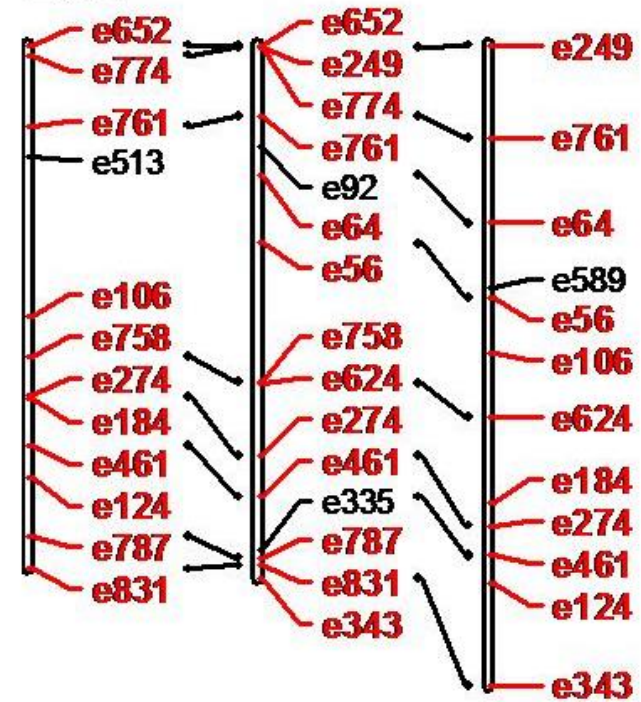


Figure S1. Three F2 linkage maps of the Iron Mountain *M. guttatus* population are aligned together by linkage group. From left to right: mapping population c2, c3, and c4. Marker names in black are unique to a single cross. Marker names in red are shared across at least two of the three mapping populations. Black lines connect shared markers in adjacent linkage groups (i.e. shared markers between c2 and c3, and shared markers between c3 and c4).

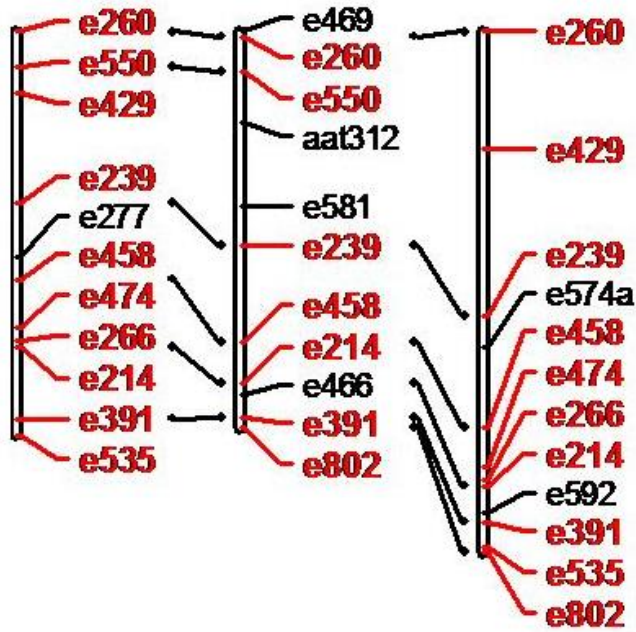
LG1



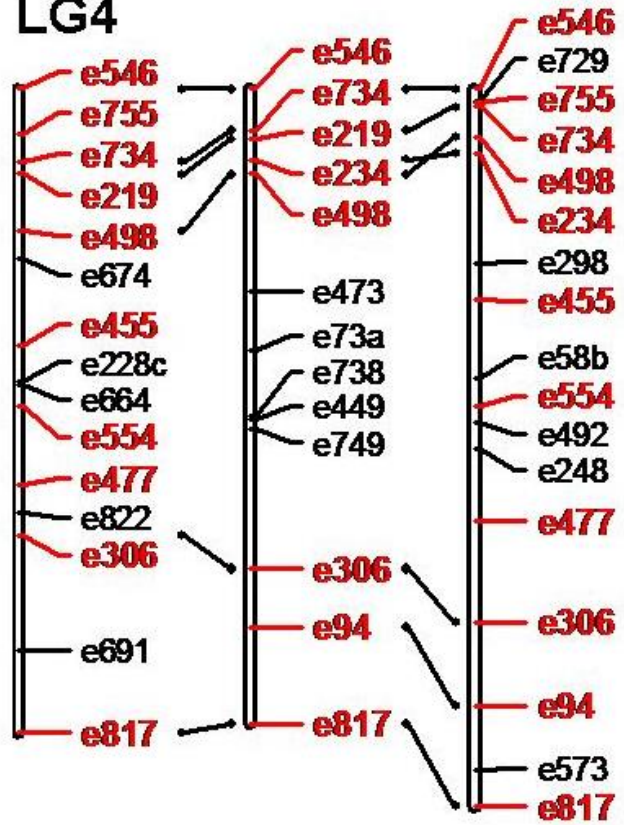
LG2



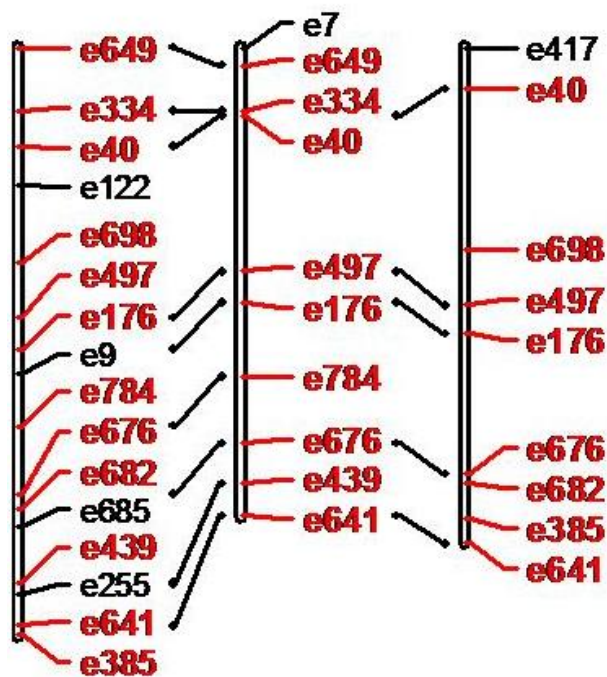
LG3



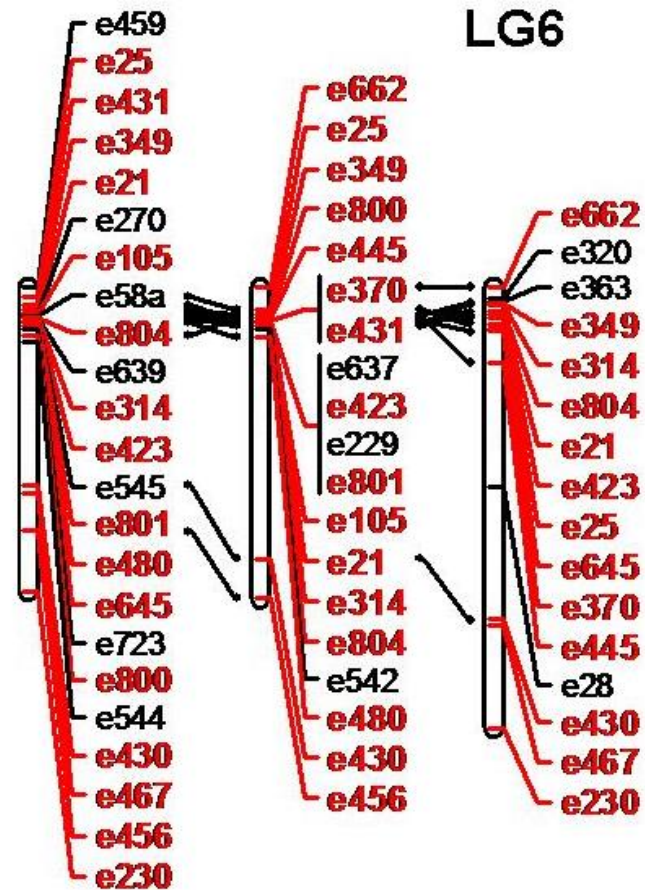
LG4



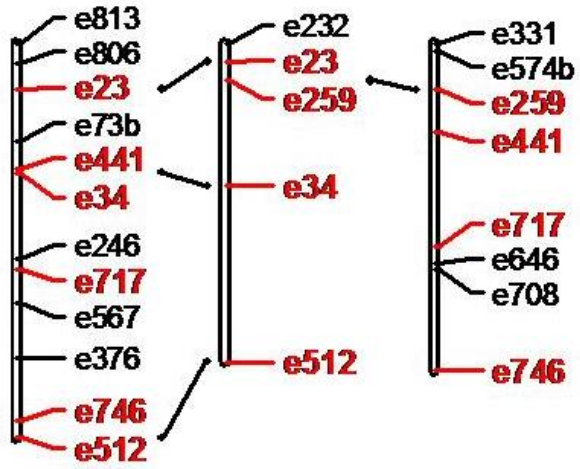
LG5



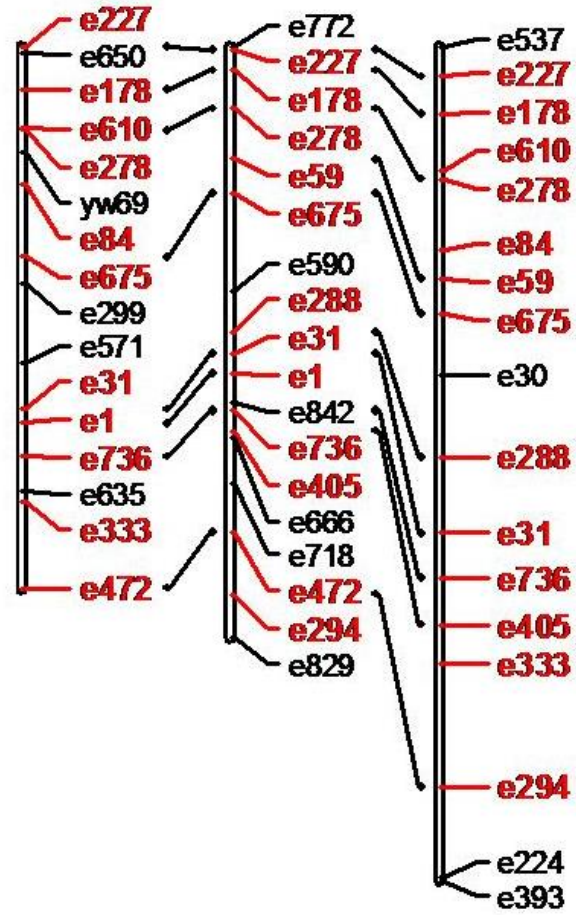
LG6



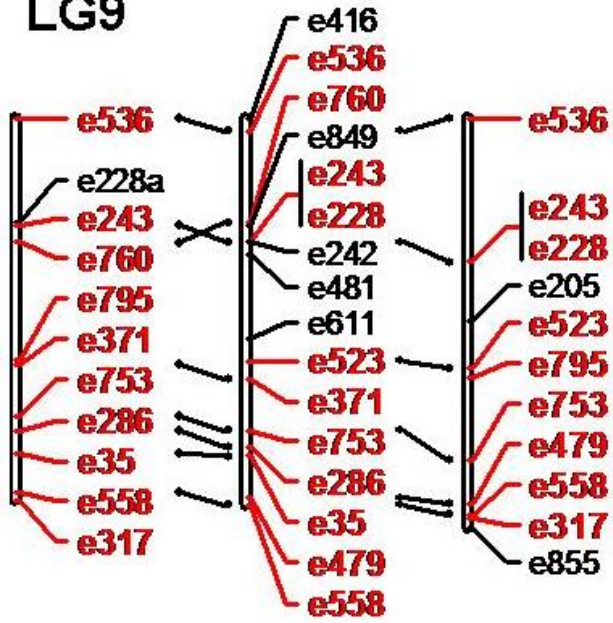
LG7



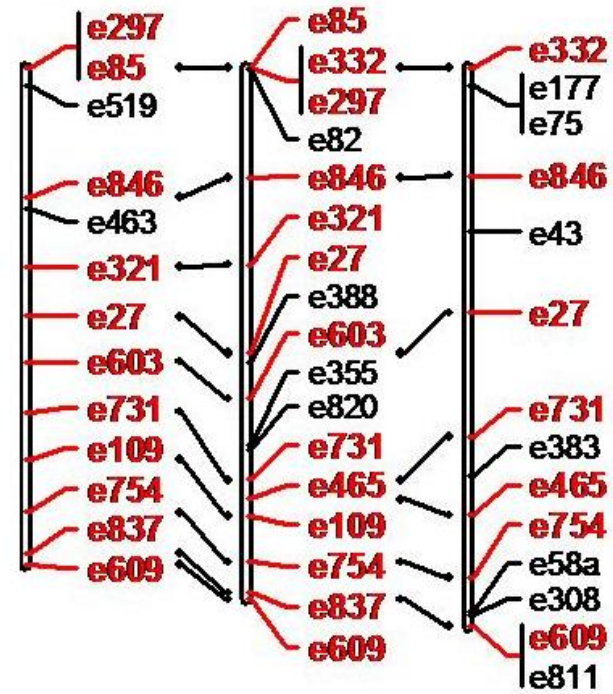
LG8



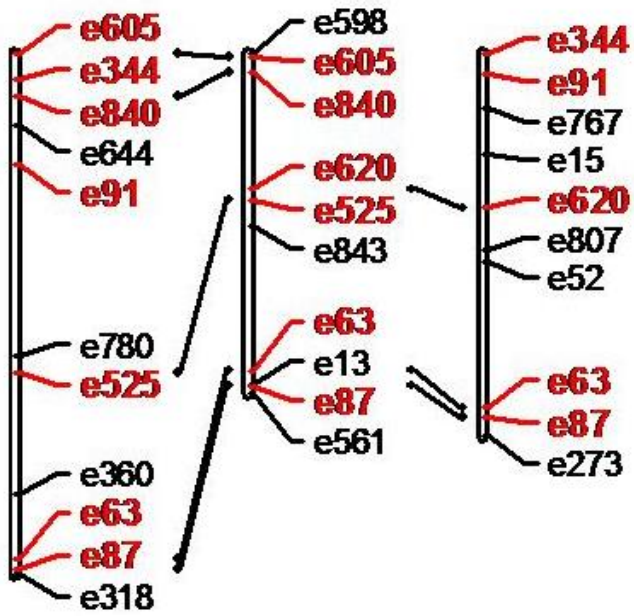
LG9



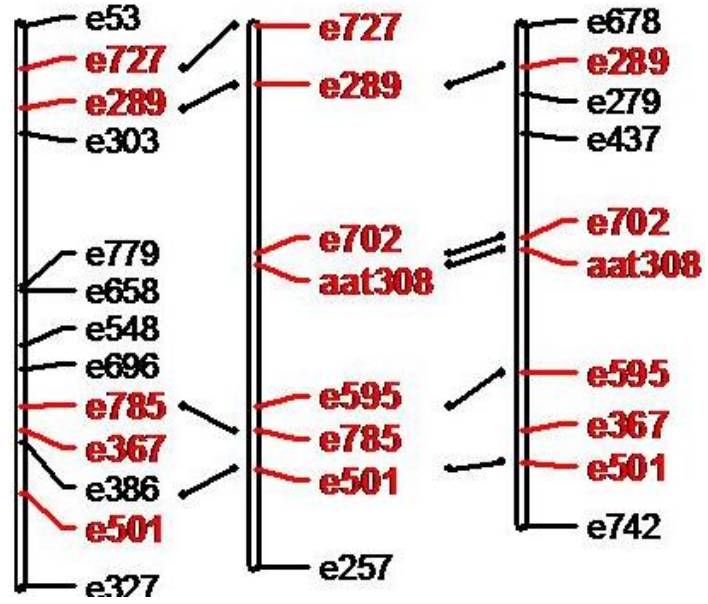
LG10



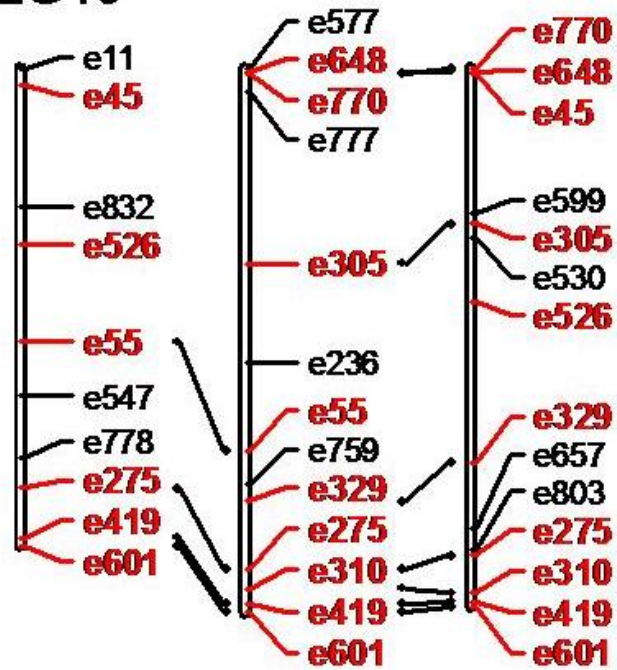
LG11



LG12



LG13



20 cM

LG14

