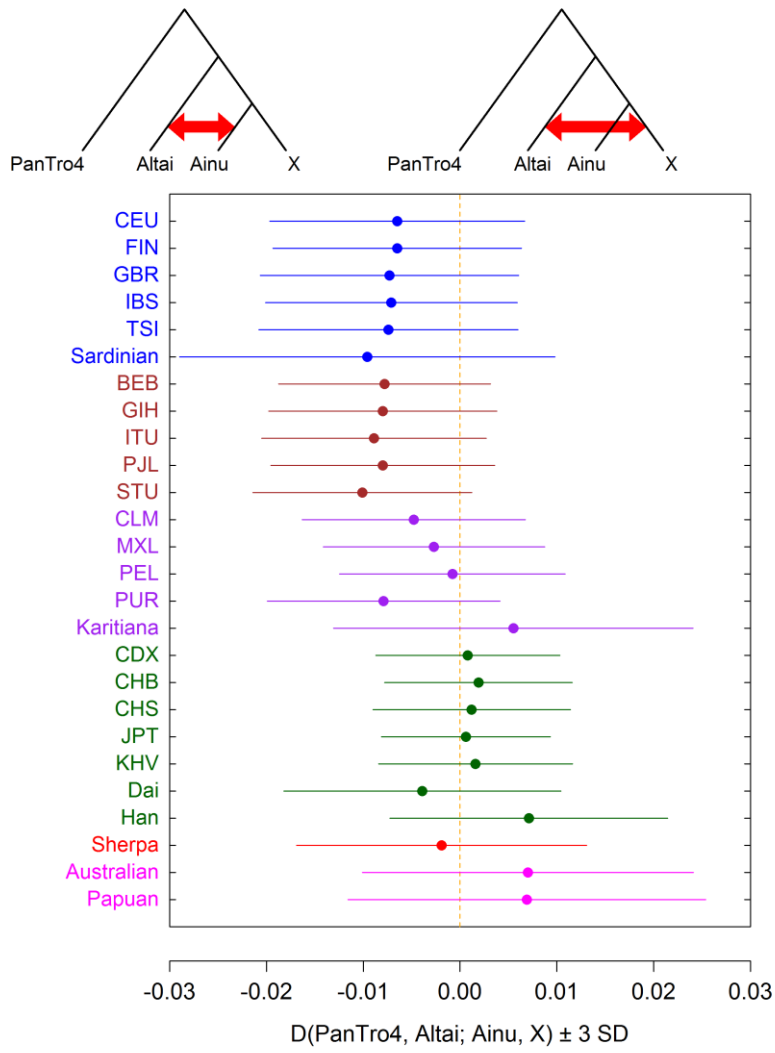


A



B

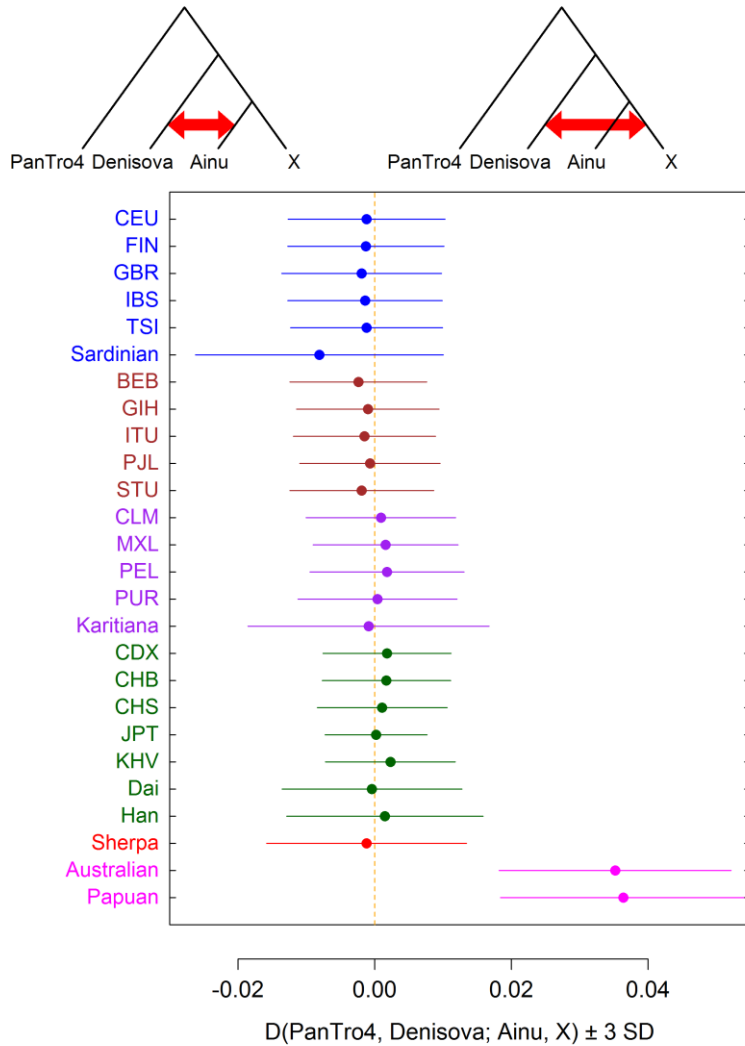


Figure S7 Genetic affinity of the Ainu and other non-African populations to archaic hominins, (A) Altai Neandertal and (B) Denisovan, measured by Patterson’s $D(\text{YRI}, \text{Archaic}; \text{Ainu}, \text{X})$. The Ainu show a similar level of archaic ancestry with the other East Asian populations ($|D| < 1.5 \text{ SD}$). The “CND-1KG-Ainu” data set was used for this analysis. Horizontal bars around the value represent ± 3 standard deviations.