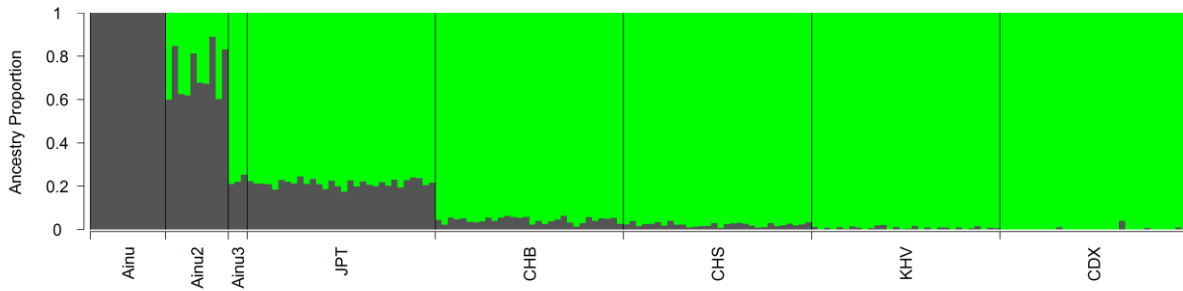
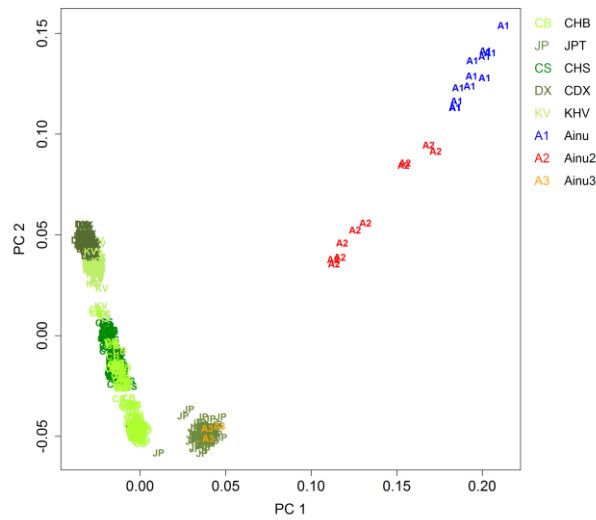


A



B



C

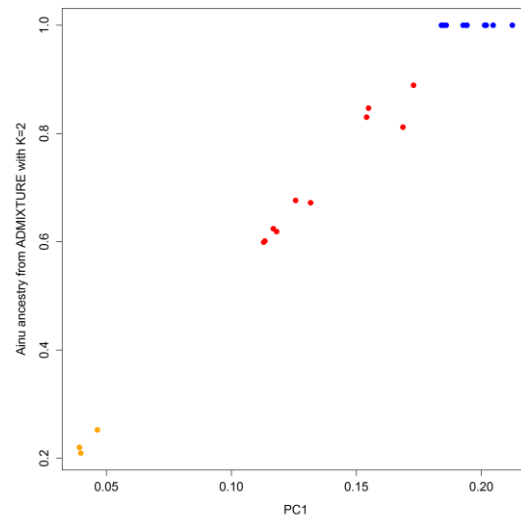


Figure S2 Identification of Ainu individuals with recent mainland Japanese ancestors. (A) *ADMIXTURE* analysis with $K=2$ and (B) PCA of 1KG East Asian and Ainu individuals identified 12 Ainu individuals with the highest Ainu ancestry (dark grey in A and PC 1 in B). Another 10 Ainu individuals (“Ainu2”) formed two discrete clusters between the “Ainu” cluster and mainland Japanese (JPT). Three Ainu individuals clustered closely with mainland Japanese (“Ainu3”). (C) *ADMIXTURE* with $K=2$ and PCA results closely match, detecting the same four clusters, including those with 100% Ainu ancestry.