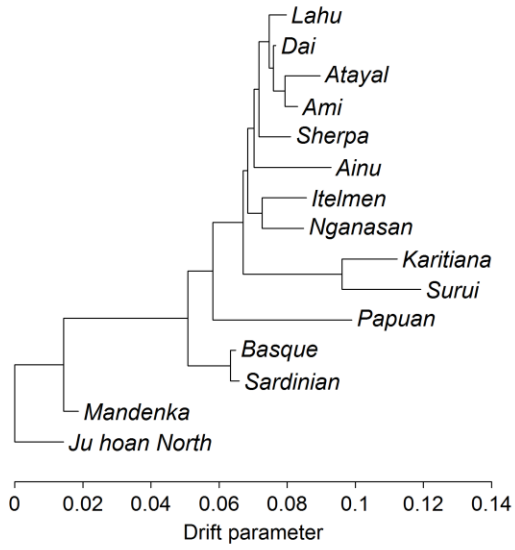
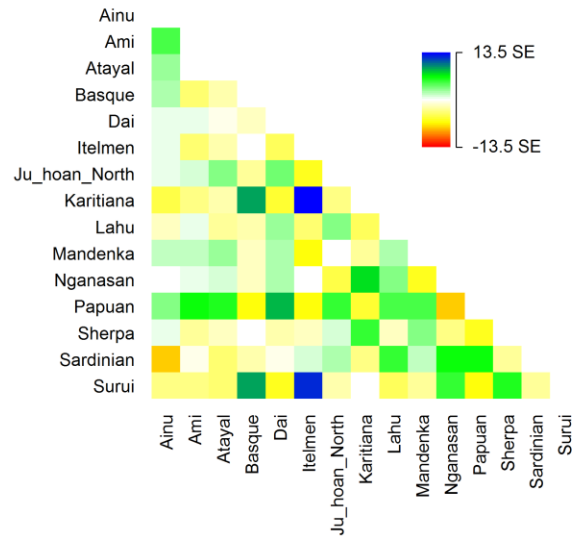


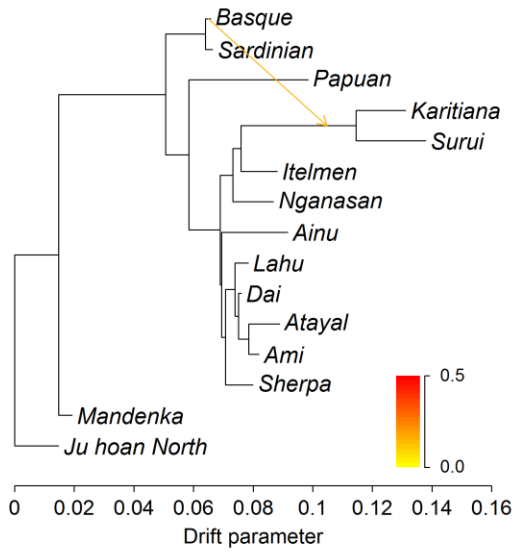
A



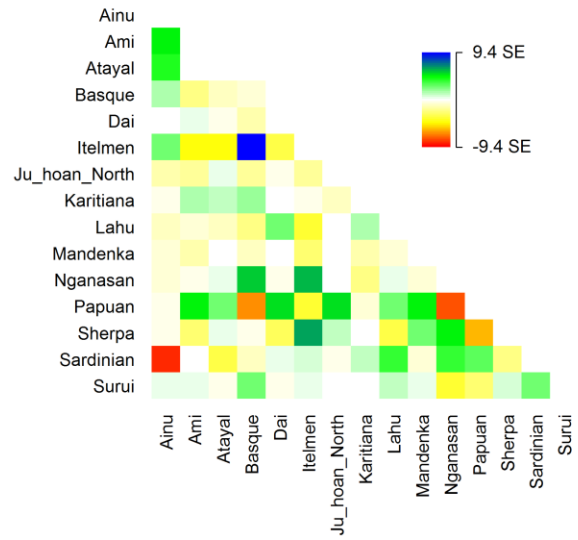
B



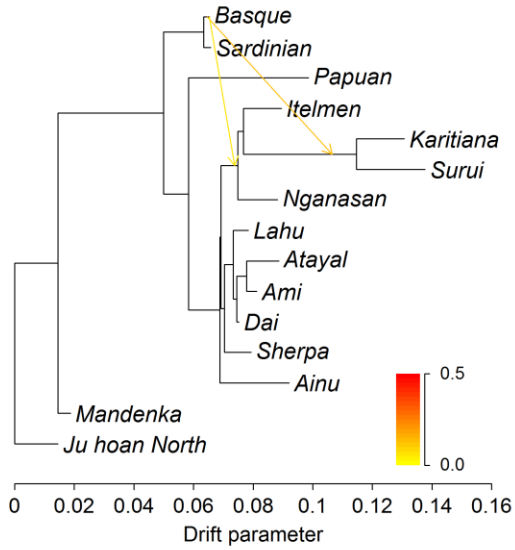
C



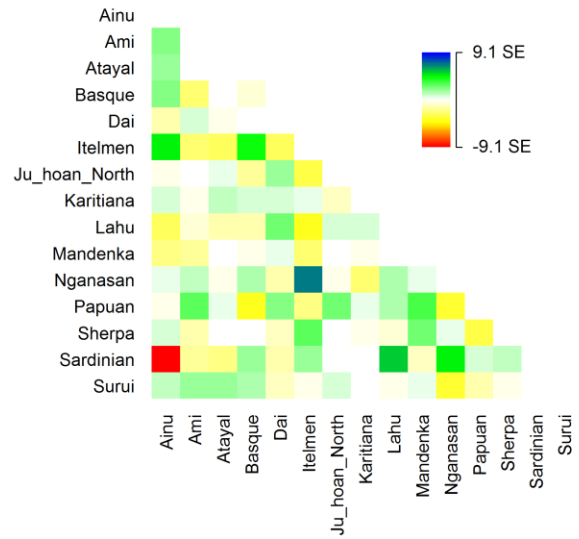
D



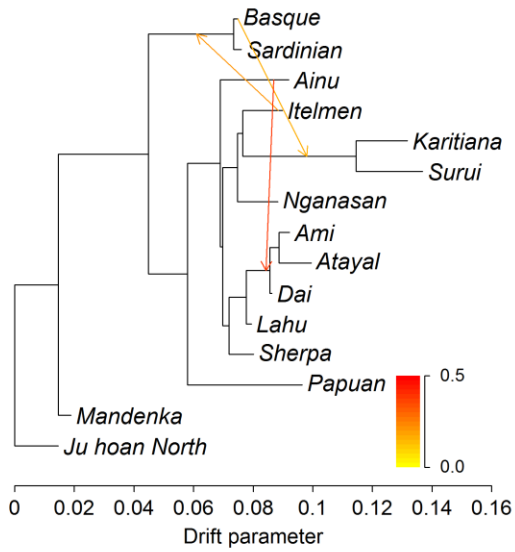
E



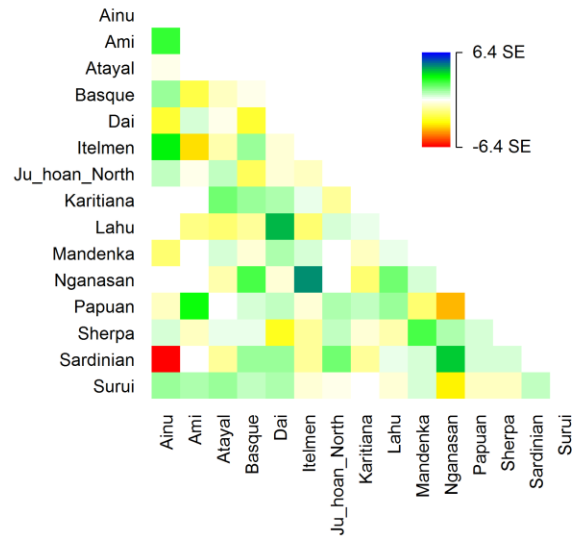
F



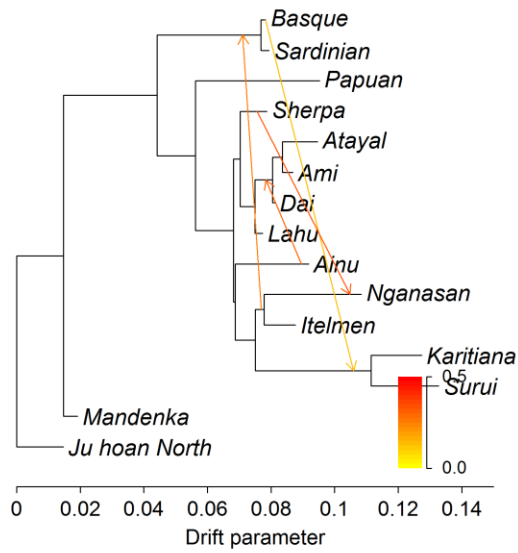
G



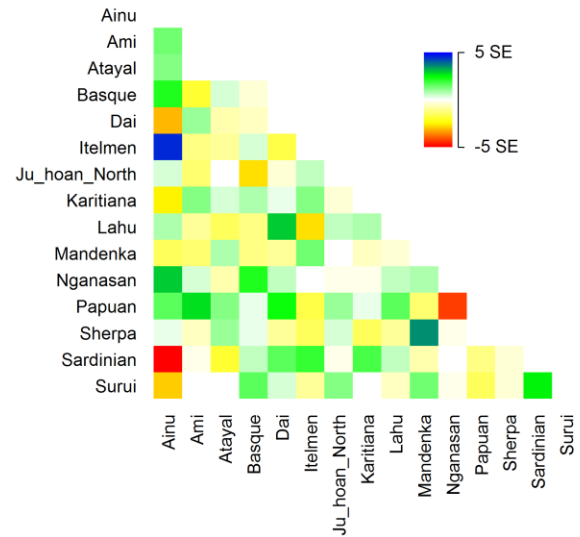
H



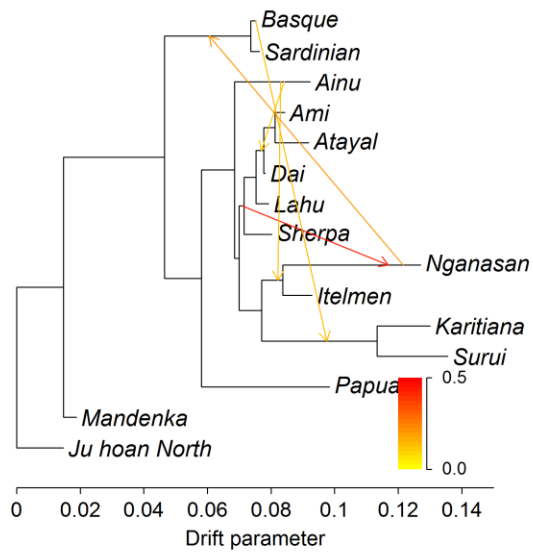
I



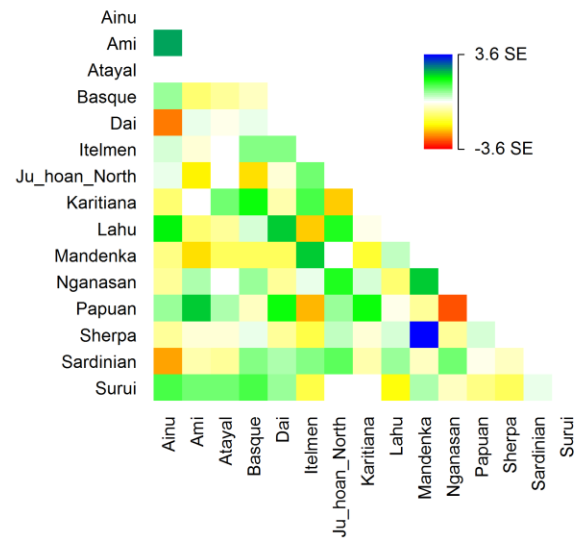
J



K



L



**Figure S11** *TreeMix* results with 0 to 5 migration edges. A single representative run was chosen from 100 bootstrap replicates. (A, C, E, G, I, K) Maximum likelihood tree with 0 to 5 migration edges. (B, D, F, H, J, L) Residual covariance matrices for the corresponding trees.