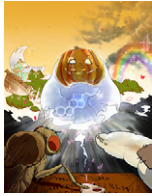


Contents

Vol. 208 No. 2 February 2018



Artwork courtesy of Ms. Yumiko Matsuura, an undergraduate student at the University of Tsukuba, Japan. The artwork depicts new insights into the transcriptional network that governs steroid hormone biosynthesis in *Drosophila*. The Niwa and King-Jones labs report that two ZAD-zinc finger transcription factors, Séance and Ouija board, induce the expression of *neverland* and *spookier*, respectively, in cooperation with a third zinc-finger protein, Molting defective. *Neverland* and *spookier* are so-called ‘Halloween’ genes, which encode enzymes that convert specific steroid intermediates in the ecdysone biosynthetic pathway. See Uryu *et al.* pp. 605–622 in this issue.

- FLYBOOK**
- 435–471** **Protecting and Diversifying the Germline**
Gleason, Ryan J., Amit Anand, Toshie Kai, and Xin Chen
OPEN ACCESS
- 473–490** **Mosaic Analysis in *Drosophila***
Germani, Federico, Cora Bergantinos, and Laura A. Johnston
- WORMBOOK**
- 491–511** **Repressive Chromatin in *Caenorhabditis elegans*: Establishment, Composition, and Function**
Ahringer, Julie and Susan M. Gasser
OPEN ACCESS
- INVESTIGATIONS**
METHODS, TECHNOLOGY, AND RESOURCES
- 513–523** **Comparative Oligo-FISH Mapping: An Efficient and Powerful Methodology To Reveal Karyotypic and Chromosomal Evolution**
Braz, Guilherme T., Li He, Hainan Zhao, Tao Zhang, Cassandra Semrau, Jean-Marie Rouillard, Giovana A. Torres, and Jiming Jiang
HIGHLIGHTED ARTICLE
- STATISTICAL GENETICS AND GENOMICS
- 525–536** **Detection of Epistasis for Flowering Time Using Bayesian Multilocus Estimation in a Barley MAGIC Population**
Mathew, Bobby, Jens Léon, Wiebke Sannemann, and Mikko J. Sillanpää
HIGHLIGHTED ARTICLE OPEN ACCESS
- GENOME INTEGRITY AND TRANSMISSION
- 537–548** **Mild Telomere Dysfunction as a Force for Altering the Adaptive Potential of Subtelomeric Genes**
Mason, Jennifer M. O. and Michael J. McEachern
- 549–563** **The Germline-Specific Factor OEF-1 Facilitates Coordinated Progression Through Germ Cell Development in *Caenorhabditis elegans***
McManus, Catherine E. and Valerie Reinke
- 565–578** **A Failsafe for Sensing Chromatid Tension in Mitosis with the Histone H3 Tail in *Saccharomyces cerevisiae***
Buehl, Christopher J., Xiexiong Deng, Jianjun Luo, Visarut Buranasudja, Tony Hazbun, and Min-Hao Kuo
HIGHLIGHTED ARTICLE

- 579–588 **Loss of *Drosophila* Mei-41/ATR Alters Meiotic Crossover Patterning**
Brady, Morgan M., Susan McMahan, and Jeff Sekelsky
- 589–603 **Genes Important for *Schizosaccharomyces pombe* Meiosis Identified Through a Functional Genomics Screen**
Blyth, Julie, Vasso Makrantonis, Rachael E. Barton, Christos Spanos, Juri Rappsilber, and Adele L. Marston
OPEN ACCESS
- GENE EXPRESSION
- 605–622 **Cooperative Control of Ecdysone Biosynthesis in *Drosophila* by Transcription Factors Séance, Ouija Board, and Molting Defective**
Uryu, Ota, Qiuxiang Ou, Tatsuya Komura-Kawa, Takumi Kamiyama, Masatoshi Iga, Monika Syrzycka, Keiko Hirota, Hiroshi Kataoka, Barry M. Honda, Kirst King-Jones, and Ryusuke Niwa
OPEN ACCESS
- 623–632 **The X-linked 1.688 Satellite in *Drosophila melanogaster* Promotes Specific Targeting by Painting of Fourth**
Kim, Maria, Samaneh Ekhteraei-Tousi, Jacob Lewerentz, and Jan Larsson
OPEN ACCESS
- 633–637 **Histone Demethylase Activity of Utx Is Essential for Viability and Regulation of *HOX* Gene Expression in *Drosophila***
Copur, Ömer and Jürg Müller
OPEN ACCESS
- CELLULAR GENETICS
- 639–653 **Dissecting the Roles of the Calcineurin Pathway in Unisexual Reproduction, Stress Responses, and Virulence in *Cryptococcus deneoformans***
Fu, Ci, Nicholas Donadio, Maria E. Cardenas, and Joseph Heitman
- 655–672 **Compensatory Internalization of Pma1 in V-ATPase Mutants in *Saccharomyces cerevisiae* Requires Calcium- and Glucose-Sensitive Phosphatases**
Velivela, Swetha Devi and Patricia M. Kane
HIGHLIGHTED ARTICLE
- DEVELOPMENTAL AND BEHAVIORAL GENETICS
- 673–686 **Tissue-Specific Gene Inactivation in *Xenopus laevis*: Knockout of *lhx1* in the Kidney with CRISPR/Cas9**
DeLay, Bridget D., Mark E. Corkins, Hannah L. Hanania, Matthew Salanga, Jian Min Deng, Norihiro Sudou, Masanori Taira, Marko E. Horb, and Rachel K. Miller
HIGHLIGHTED ARTICLE
- 687–704 **A Common Pathway of Root Growth Control and Response to CLE Peptides Through Two Receptor Kinases in *Arabidopsis***
Racolta, Adriana, Michael D. Nodine, Kelli Davies, Cameron Lee, Scott Rowe, Yulemi Velazco, Rachel Wellington, and Frans E. Tax
HIGHLIGHTED ARTICLE

- 705–716** *Drosophila* Syd-1 Has RhoGAP Activity That Is Required for Presynaptic Clustering of Bruchpilot/ELKS but Not Neurexin-1
Spinner, Michael A., David A. Walla, and Tory G. Herman
- 717–728** Regulated Alternative Splicing of *Drosophila Dscam2* Is Necessary for Attaining the Appropriate Number of Photoreceptor Synapses
Kerwin, Sarah K., Joshua Shing Shun Li, Peter G. Noakes, Grace Ji-eun Shin, and S. Sean Millard
- 729–743** *Mettl3* Mutation Disrupts Gamete Maturation and Reduces Fertility in Zebrafish
Xia, Hui, Chengrong Zhong, Xingxing Wu, Ji Chen, Binbin Tao, Xiaoqin Xia, Mijuan Shi, Zuoyan Zhu, Vance L. Trudeau, and Wei Hu
- 745–762** HOP-1 Presenilin Deficiency Causes a Late-Onset Notch Signaling Phenotype That Affects Adult Germline Function in *Caenorhabditis elegans*
Agarwal, Ipsita, Cassandra Farnow, Joshua Jiang, Kyung-Sik Kim, Donna E. Leet, Ruth Z. Solomon, Valerie A. Hale, and Caroline Goutte

POPULATION AND EVOLUTIONARY GENETICS

- 763–777** Relaxed Selection During a Recent Human Expansion
Peischl, Stephan, Isabelle Dupanloup, Adrien Foucal, Michèle Jomphe, Vanessa Bruat, Jean-Christophe Grenier, Alexandre Gouy, K. J. Gilbert, Elias Gbeha, Lars Bosshard, Elodie Hip-Ki, Mawussé Agbessi, Alan Hodgkinson, Hélène Vézina, Philip Awadalla, and Laurent Excoffier
HIGHLIGHTED ARTICLE
- 779–789** Keeping Pace with the Red Queen: Identifying the Genetic Basis of Susceptibility to Infectious Disease
MacPherson, Ailene, Sarah P. Otto, and Scott L. Nuismer
HIGHLIGHTED ARTICLE OPEN ACCESS
- 791–805** Detecting Recent Positive Selection with a Single Locus Test Bipartitioning the Coalescent Tree
Yang, Zongfeng, Junrui Li, Thomas Wiehe, and Haipeng Li
- 807–821** The Local Coexistence Pattern of Selfing Genotypes in *Caenorhabditis elegans* Natural Metapopulations
Richaud, Aurélien, Gaotian Zhang, Daehan Lee, Junho Lee, and Marie-Anne Félix
OPEN ACCESS