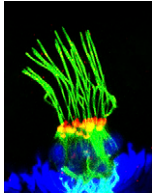


Contents

Vol. 207 No. 3 November 2017



Confocal microscope image of crista in the vestibular system of the zebrafish ear at 5 days postfertilization. Cilia are visualized with an antibody to acetylated tubulin (in green). The Crumbs protein, a well-studied regulator of apical-basal polarity, localizes to the base of cilia (visualized by immunostaining in red). Cells are counterstained to visualize nuclei (in blue). See Hazime and Malicki, pp. 1041–1051. Image courtesy of Khodor Hazime and Jarema Malicki.

FLYBOOK

- 825–842 Moving Speciation Genetics Forward: Modern Techniques Build on Foundational Studies in *Drosophila***
Castillo, Dean M. and Daniel A. Barbash

WORMBOOK

- 843–871 Cell Biology of the Mitochondrion**
van der Blik, Alexander M., Margaret M. Sedensky, and Phil G. Morgan

INVESTIGATIONS

METHODS, TECHNOLOGY, AND RESOURCES

- 873–882 *AdmixPower*: Statistical Power and Sample Size Estimation for Mapping Genetic Loci in Admixed Populations**
Gautam, Yadu, Mekibib Altaye, Changchun Xie, and Tesfaye B. Mersha

STATISTICAL GENETICS AND GENOMICS

- 883–891 COMBAT: A Combined Association Test for Genes Using Summary Statistics**
Wang, Minghui, Jianfei Huang, Yiyuan Liu, Li Ma, James B. Potash, and Shizhong Han

HIGHLIGHTED ARTICLE

- 893–902 A Powerful Framework for Integrating eQTL and GWAS Summary Data**
Xu, Zhiyuan, Chong Wu, Peng Wei, and Wei Pan

- 903–910 A Powerful Variant-Set Association Test Based on Chi-Square Distribution**
Chen, Zhongxue, Tong Lin, and Kai Wang

GENOME INTEGRITY AND TRANSMISSION

- 911–922 Autosomal Trisomy and Triploidy Are Corrected During Female Meiosis in *Caenorhabditis elegans***
Vargas, Elizabeth, Karen McNally, Jacob A. Friedman, Daniel B. Cortes, David Y. Wang, Ian F. Korf, and Francis J. McNally

- 923–933 The Role of Blm Helicase in Homologous Recombination, Gene Conversion Tract Length, and Recombination Between Diverged Sequences in *Drosophila melanogaster***
Ertl, Henry A., Daniel P. Russo, Noori Srivastava, Joseph T. Brooks, Thu N. Dao, and Jeannine R. LaRocque

- 935–947 Rapid DNA Synthesis During Early *Drosophila* Embryogenesis Is Sensitive to Maternal Humpty Dumpty Protein Function**
Lesly, Shera, Jennifer L. Bandura, and Brian R. Calvi

HIGHLIGHTED ARTICLE

- 949–959 **Chromosome Healing Is Promoted by the Telomere Cap Component Hiphop in *Drosophila***
Kurzahls, Rebecca L., Laura Fanti, A. C. Gonzalez Ebsen, Yikang S. Rong, Sergio Pimpinelli, and Kent G. Golic
- GENE EXPRESSION
- 961–974 **A Key Regulator of the Glycolytic and Gluconeogenic Central Metabolic Pathways in *Sinorhizobium meliloti***
diCenzo, George C., Zahed Muhammed, Magne Østerås, Shelley A. P. O'Brien, and Turlough M. Finan
- 975–991 **Diversification of Transcriptional Regulation Determines Subfunctionalization of Paralogous Branched Chain Aminotransferases in the Yeast *Saccharomyces cerevisiae***
González, James, Geovani López, Stefany Argueta, Ximena Escalera-Fanjul, Mohammed el Hafidi, Carlos Campero-Basaldua, Joseph Strauss, Lina Riego-Ruiz, and Alicia González
- CELLULAR GENETICS
- 993–1006 **Extended Synaptotagmin Localizes to Presynaptic ER and Promotes Neurotransmission and Synaptic Growth in *Drosophila***
Kikuma, Koto, Xiling Li, Daniel Kim, David Sutter, and Dion K. Dickman
HIGHLIGHTED ARTICLE
- 1007–1022 **Distinct and Cooperative Roles of *amh* and *dmrt1* in Self-Renewal and Differentiation of Male Germ Cells in Zebrafish**
Lin, Qiaohong, Jie Mei, Zhi Li, Xuemei Zhang, Li Zhou, and Jian-Fang Gui
- 1023–1039 **Ethanol Stimulates Locomotion via a G_{αs}-Signaling Pathway in IL2 Neurons in *Caenorhabditis elegans***
Johnson, James R., Mark R. Edwards, Huw Davies, Daniel Newman, Whitney Holden, Rosalind E. Jenkins, Robert D. Burgoyne, Robert J. Lucas, and Jeff W. Barclay
HIGHLIGHTED ARTICLE OPEN ACCESS
- DEVELOPMENTAL AND BEHAVIORAL GENETICS
- 1041–1051 **Apico-basal Polarity Determinants Encoded by *crumbs* Genes Affect Ciliary Shaft Protein Composition, IFT Movement Dynamics, and Cilia Length**
Hazime, Khodor and Jarema J. Malicki
- 1053–1066 **Body Shape and Coloration of Silkworm Larvae Are Influenced by a Novel Cuticular Protein**
Xiong, Gao, Xiaoling Tong, Tingting Gai, Chunlin Li, Liang Qiao, Antónia Monteiro, Hai Hu, Minjin Han, Xin Ding, Songyuan Wu, Zhonghuai Xiang, Cheng Lu, and Fangyin Dai
HIGHLIGHTED ARTICLE
- 1067–1078 **Tra-2 Mediates Cross-Talk Between Sex Determination and Wing Polyphenism in Female *Nilaparvata lugens***
Zhuo, Ji-Chong, Chen Lei, Ji-Kai Shi, Nan Xu, Wen-Hua Xue, Meng-Qiu Zhang, Ze-Wei Ren, Hou-Hong Zhang, and Chuan-Xi Zhang

POPULATION AND EVOLUTIONARY GENETICS

- 1079–1088 **Mitigating Mitochondrial Genome Erosion Without Recombination**
Radzvilavicius, Arunas L., Hanna Kokko, and Joshua R. Christie
HIGHLIGHTED ARTICLE
- 1089–1101 **Donor-Recipient Identification in Para- and Poly-phyletic Trees Under Alternative HIV-1 Transmission Hypotheses Using Approximate Bayesian Computation**
Romero-Severson, Ethan O., Ingo Bulla, Nick Hengartner, Inês Bártolo, Ana Abecasis, José M. Azevedo-Pereira, Nuno Taveira, and Thomas Leitner
OPEN ACCESS
- 1103–1119 **Inference of Distribution of Fitness Effects and Proportion of Adaptive Substitutions from Polymorphism Data**
Tataru, Paula, Maéva Mollion, Sylvain Glémin, and Thomas Bataillon
OPEN ACCESS
- GENETICS OF COMPLEX TRAITS
- 1121–1134 **Prediction and Subtyping of Hypertension from Pan-Tissue Transcriptomic and Genetic Analyses**
Basu, Mahashweta, Mahfuza Sharmin, Avinash Das, Nishanth Ulhas Nair, Kun Wang, Joo Sang Lee, Yen-Pei Christy Chang, Eytan Ruppín, and Sridhar Hannenhalli
- 1135–1145 **Will Big Data Close the Missing Heritability Gap?**
Kim, Hwasoon, Alexander Grueneberg, Ana I. Vazquez, Stephen Hsu, and Gustavo de los Campos
HIGHLIGHTED ARTICLE OPEN ACCESS
- 1147–1155 **Improving Disease Prediction by Incorporating Family Disease History in Risk Prediction Models with Large-Scale Genetic Data**
Gim, Jungsoo, Wonji Kim, Soo Heon Kwak, Hosik Choi, Changyi Park, Kyong Soo Park, Sunghoon Kwon, Taesung Park, and Sungho Won
- 1157–1166 **Variation in Position Effect Variegation Within a Natural Population**
Kelsey, Keegan J. P. and Andrew G. Clark
- 1167–1180 **Reciprocal Genetics: Identifying QTL for General and Specific Combining Abilities in Hybrids Between Multiparental Populations from Two Maize (*Zea mays* L.) Heterotic Groups**
Giraud, Héloïse, Cyril Bauland, Matthieu Falque, Delphine Madur, Valérie Combes, Philippe Jamin, Cécile Monteil, Jacques Laborde, Carine Palaffre, Antoine Gaillard, Philippe Blanchard, Alain Charcosset, and Laurence Moreau
HIGHLIGHTED ARTICLE OPEN ACCESS
- 1181–1193 **Insights into DDT Resistance from the *Drosophila melanogaster* Genetic Reference Panel**
Schmidt, Joshua M., Paul Battlay, Rebecca S. Gledhill-Smith, Robert T. Good, Chris Lumb, Alexandre Fournier-Level, and Charles Robin
OPEN ACCESS
- GENOME AND SYSTEMS BIOLOGY
- 1195–1211 **Parasex Generates Phenotypic Diversity *de Novo* and Impacts Drug Resistance and Virulence in *Candida albicans***
Hirakawa, Matthew P., Darius E. Chyou, Denis Huang, Aaron R. Slan, and Richard J. Bennett