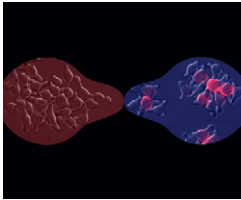


Contents

Vol. 195 No. 4 December 2013



Cover photo: When stimulated by pheromone, budding yeast form a mating projection known as a shmoo, arrest the cell cycle, and activate transcription of pheromone-response genes. The *MATa* cells shown here (right) form shmooos and are capable of enduring arrest in response to pheromone stimulation. However, *MATα* cells (left) expressing the pheromone receptor normally expressed by *MATa* cells shmoo readily but arrest only transiently. Image courtesy of Lori B. Huberman. See Huberman and Murray, *Genetics* 195:1277–1290.

- 1201–1207** **PRIMER**
SMG-ly Knocking Out Gene Expression in Specific Cells: An Educational Primer for Use with “A Novel Strategy for Cell-Autonomous Gene Knockdown in *Caenorhabditis elegans* Defines a Cell-Specific Function for the G-Protein Subunit GOA-1”
Meneely, Philip M. and Jordana C. Bloom
- 1209–1222** **INVESTIGATIONS**
METHODS, TECHNOLOGY, AND RESOURCES
Mapping Quantitative Trait Loci by Controlling Polygenic Background Effects
Xu, Shizhong
- 1223–1230** **On the Additive and Dominant Variance and Covariance of Individuals Within the Genomic Selection Scope**
Vitezica, Zulma G., Luis Varona, and Andres Legarra
- 1231–1240** **GENOME INTEGRITY AND TRANSMISSION**
Initiation of Meiotic Recombination in *Ustilago maydis*
Kojic, Milorad, Jeanette H. Sutherland, José Pérez-Martín, and William K. Holloman
- 1241–1251** **Resection Activity of the Sgs1 Helicase Alters the Affinity of DNA Ends for Homologous Recombination Proteins in *Saccharomyces cerevisiae***
Bernstein, Kara A., Eleni P. Mimitou, Michael J. Mihalevic, Huan Chen, Ivana Sunjaveric, Lorraine S. Symington, and Rodney Rothstein
- 1253–1264** **GENE EXPRESSION**
Noncoding RNAs of the *Ultrabithorax* Domain of the *Drosophila* Bithorax Complex
Pease, Benjamin, Ana C. Borges, and Welcome Bender
- 1265–1276** **CELLULAR GENETICS**
Tolerance of *Escherichia coli* to Fluoroquinolone Antibiotics Depends on Specific Components of the SOS Response Pathway
Theodore, Alyssa, Kim Lewis, and Marin Vulić
- 1277–1290** **Genetically Engineered Transvestites Reveal Novel Mating Genes in Budding Yeast**
Huberman, Lori B. and Andrew W. Murray
- 1291–1306** **DEVELOPMENTAL AND BEHAVIORAL GENETICS**
Evidence for Tissue-Specific JAK/STAT Target Genes in *Drosophila* Optic Lobe Development
Wang, Hongbin, Xi Chen, Teng He, Yanna Zhou, and Hong Luo
- 1307–1317** **Regulation of Toll Signaling and Inflammation by β -Arrestin and the SUMO Protease Ulp1**
Anjum, Saima G., Wenjian Xu, Niusha Nikkholgh, Sukanya Basu, Yingchao Nie, Mary Thomas, Mridula Satyamurti, Bogdan A. Budnik, Y. Tony Ip, and Alexey Veraksa

	POPULATION AND EVOLUTIONARY GENETICS
1319–1335	Adaptive Divergence in Experimental Populations of <i>Pseudomonas fluorescens</i>. V. Insight into the Niche Specialist Fuzzy Spreader Compels Revision of the Model <i>Pseudomonas</i> Radiation Ferguson, Gayle C., Frederic Bertels, and Paul B. Rainey
1337–1352	Gene Amplification and Functional Diversification of Melanocortin 4 Receptor at an Extremely Polymorphic Locus Controlling Sexual Maturation in the Platyfish Volf, Jean-Nicolas, Yvonne Selz, Carsten Hoffmann, Alexander Froschauer, Christina Schultheis, Cornelia Schmidt, Qingchun Zhou, Wolfgang Bernhardt, Reinhold Hanel, Astrid Böhne, Frédéric Brunet, Béatrice Séguens, Arnaud Couloux, Sylvie Bernard-Samain, Valérie Barbe, Catherine Ozouf-Costaz, Delphine Galiana, Martin J. Lohse, and Manfred Scharl
1353–1372	The Evolutionary Genetics of the Genes Underlying Phenotypic Associations for Loblolly Pine (<i>Pinus taeda</i>, Pinaceae) Eckert, Andrew J., Jill L. Wegrzyn, John D. Liechty, Jennifer M. Lee, W. Patrick Cumbie, John M. Davis, Barry Goldfarb, Carol A. Loopstra, Sreenath R. Palle, Tania Quesada, Charles H. Langley, and David B. Neale
1373–1384	Allelic Diversity and Its Implications for the Rate of Adaptation Caballero, Armando and Aurora García-Dorado
	GENETICS OF COMPLEX TRAITS
1385–1395	A Novel Intronic Single Nucleotide Polymorphism in the <i>Myosin heavy polypeptide 4</i> Gene Is Responsible for the Mini-Muscle Phenotype Characterized by Major Reduction in Hind-Limb Muscle Mass in Mice Kelly, Scott A., Timothy A. Bell, Sara R. Selitsky, Ryan J. Buus, Kunjie Hua, George M. Weinstock, Theodore Garland Jr., Fernando Pardo-Manuel de Villena, and Daniel Pomp
1397–1405	APOE Modulates the Correlation Between Triglycerides, Cholesterol, and CHD Through Pleiotropy, and Gene-by-Gene Interactions Maxwell, Taylor J., Christie M. Ballantyne, James M. Cheverud, Cameron S. Guild, Chiadi E. Ndumele, and Eric Boerwinkle
	GENOME AND SYSTEMS BIOLOGY
1407–1417	Integration of New Genes into Cellular Networks, and Their Structural Maturation Abrusán, György
	NOTE
	GENE EXPRESSION
1419–1422	Sex-Specific Effects of <i>Cis</i>-Regulatory Variants in <i>Drosophila melanogaster</i> Coolon, Joseph D., William Webb, and Patricia J. Wittkopp
1423–1427	REVIEWER INDEX