

Review

The Birds and the Bees and the Flowers and the Trees: Lessons from Genetic Mapping of Sex Determination in Plants and Animals

Deborah Charlesworth^{*,1} and Judith E. Mank[†]

^{*}*Institute of Evolutionary Biology, University of Edinburgh, Edinburgh EH9 3JT, United Kingdom and* [†]*Department of Zoology, Edward Grey Institute, University of Oxford, Oxford OX1 3PS, United Kingdom*

ABSTRACT

The ability to identify genetic markers in nonmodel systems has allowed geneticists to construct linkage maps for a diversity of species, and the sex-determining locus is often among the first to be mapped. Sex determination is an important area of study in developmental and evolutionary biology, as well as ecology. Its importance for organisms might suggest that sex determination is highly conserved. However, genetic studies have shown that sex determination mechanisms, and the genes involved, are surprisingly labile. We review studies using genetic mapping and phylogenetic inferences, which can help reveal evolutionary pattern within this lability and potentially identify the changes that have occurred among different sex determination systems. We define some of the terminology, particularly where confusion arises in writing about such a diverse range of organisms, and highlight some major differences between plants and animals, and some important similarities. We stress the importance of studying taxa suitable for testing hypotheses, and the need for phylogenetic studies directed to taxa where the patterns of changes can be most reliably inferred, if the ultimate goal of testing hypotheses regarding the selective forces that have led to changes in such an essential trait is to become feasible.

THE ever-increasing accessibility of genetic markers is allowing sex-determining regions to be genetically mapped in a growing number of nonmodel organisms. There are several reasons for studying sex determination. In animals, gonadal differences are often accompanied by striking somatic secondary sexual dimorphisms, which are interesting in an evolutionary context (SHINE 1989; BADYAEV 2002). In plants, females and males often differ in flower morphology and abundance (DAWSON and GEBER 1998), and, although sex differences are often minor outside the flowers (or inflorescences), they do exist (DAWSON and GEBER 1998; EPPLEY and WENK 2001). The genetic control of these phenotypes is a fundamental biological process, and studying sex determination pathways is important in animal developmental biology (ADAMS and McLAREN 2002; PINYOPICH *et al.* 2003), including genetic pathway evolution (WILKINS 1995; WILLIAMS and CARROLL 2009).

Until recently, sex determination was generally studied by testing for genetic control *vs.* partial or complete environmental influences. Genetic systems were exam-

ined cytologically to determine the level of heteromorphism between the sex chromosomes and to identify whether females or males are heterogametic (see the comprehensive review in BULL 1983). Male heterogametic systems, referred to as XY, were also tested to identify whether the Y chromosome carries a male-determining gene, as in almost all therian mammals and most dioecious plants so far studied, or whether sex is determined through X–autosome balance, as in *Drosophila* and *Caenorhabditis elegans* (HAAG 2005). For female heterogametic (ZW) species, analogous tests were used to identify how femaleness is determined.

Until recently, sex-determining genes and regions could be genetically mapped in only a few model species, but now that molecular genetic markers can be developed in nonmodel species, new information is becoming available about how genetic sex determination (GSD) mechanisms have changed during evolutionary history. It has long been known from genetic mapping in model systems, including mammals, and (more recently) birds, that sex chromosomes often have large nonrecombining regions (BULL 1983; CHARLESWORTH 1991; CHARLESWORTH *et al.* 2005). However, in other organisms, nonrecombining regions are not always large and may sometimes be absent. The evolution of sexual reproduction and recombination have been the focus

¹Corresponding author: Ashworth Lab, King's Buildings, West Mains Rd., University of Edinburgh, Edinburgh EH9 3JT, United Kingdom.
E-mail: deborah.charlesworth@ed.ac.uk

of many years of discussion in evolutionary biology (OTTO 2009), and studies of sex chromosomes are important for understanding why recombination is often lost, and elucidating the evolutionary consequences of recombination suppression (CHARLESWORTH 1996; OTTO and BARTON 1997; BARTON and CHARLESWORTH 1998). The adaptation of genes on the sex chromosomes is also interesting, because this location affects the outcome of sex-specific selection pressures (RICE 1984; CHARLESWORTH *et al.* 1987; VICOSO and CHARLESWORTH 2006; MANK 2009a). Finally, the mechanism of sex determination can affect sex ratios (WEST and SHELDON 2002; DORKEN and PANNELL 2008; WEST 2009) and is therefore significant in evolutionary ecology.

Sex determination is also relevant in applied biology. In many domesticated animals, one sex may be of greatest economic interest to farmers and breeders. Modern meat production is largely based on males, including industrial production of chicken, cattle, and many fish, whereas females are the sex required for milk (cattle) and egg (chicken) production. Similarly, a few crop plants are dioecious, and, in some of these, the crop is produced by females (*e.g.*, grapes, dates, and papaya), while in other species the sexes differ in characteristics such as fiber or chemical content. Because immature birds, fish, and plants have no obvious phenotypic sex differences, maximizing agricultural returns often requires genetically sexing juveniles. Mapping sex determination is an important first step toward identifying the sex-determining genes or finding other sex-specific markers to develop molecular sexing methods.

In this review, we first summarize recent developments in genetic mapping of sex determination, concentrating on nonmodel plants and animals with genetic sex determination. We show how this information can be useful for understanding the evolution of sex determination and sex chromosomes and identify some important unanswered questions.

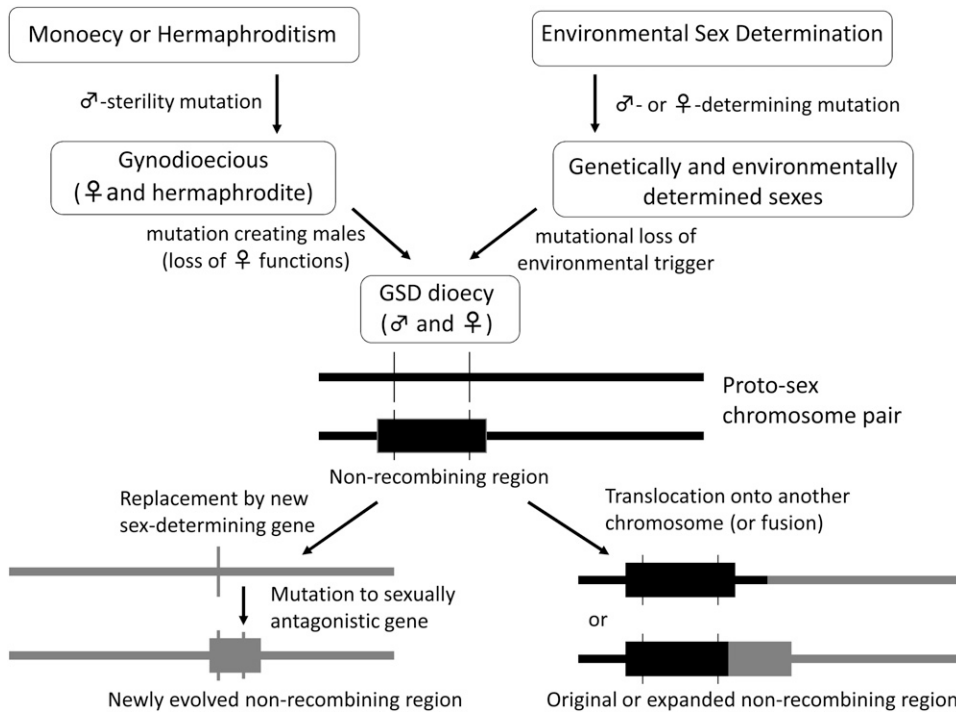
SOME IMPORTANT CONCEPTS AND TERMINOLOGY

As we will describe, genetic results have revealed changes in both the mechanism of sex determination and in the location of preexisting sex-determining genes. Given our wide taxonomic scope, it is important to note, first, that the terms X and Y chromosomes (or Z and W) do not necessarily mean a chromosome pair carrying the genes giving the earliest sex-determining signal to the developmental system. In some systems, the sex chromosomes and autosomes jointly determine sex, such as the X-autosome balance systems of *Drosophila*, *C. elegans*, and the plant *Rumex* (NAVAJAS-PEREZ *et al.* 2005). Cases such as these probably evolved from ancestors whose sex chromosomes did carry such genes. Mechanisms of sex determination often vary among closely related taxa, and there are several hypotheses to

explain transitions between different systems (*e.g.*, BULL 1983; VAN DOORN and KIRKPATRICK 2007; VUILLEUMIER *et al.* 2007; KOZIELSKA *et al.* 2010), but here we focus on new data about empirically demonstrated transitions, for which genetic mapping results are particularly illuminating.

Second, unlike the well-known sex chromosomes of therian mammals and birds, sex-determining chromosomes in some species lack large nonrecombining regions (BULL 1983). This situation can arise in two ways (Figure 1). Sometimes a sex-determining region has not yet evolved a nonrecombining region; this is often referred to as a proto sex chromosome. (See glossary of terms in Table 1.) Alternatively, a recent replacement of the sex-determining locus can produce a homomorphic chromosome pair with single-gene sex determination, and also no nonrecombining region. Replacement of an existing sex-determining gene by a new one will often lead to production of homozygotes for the original sex-determining locus, except when the change involves a fully dominant male-determining gene. When the original sex-determining locus lies within a large sex-specific nonrecombining region, such as a genetically degenerated Y chromosome that lacks many genes carried by the X, such YY individuals will often be homozygous lethal, preventing fixation of the new gene. However, such replacements could occur in plant and fish species where homozygotes for the sex-determining locus are viable. Such recently arisen sex-determining chromosomes are thus also called proto sex chromosomes. If a nonrecombining sex-determining region, such as a dominant male-determining region of a Y chromosome, moves to a new genomic location (*e.g.*, in a chromosome fusion), the original nonrecombining region may be retained. If not, the new sex-determining chromosome may evolve suppressed recombination, either immediately through the chromosome rearrangement itself, or through a later decrease in crossing over.

Given these varied possibilities, we use the term “sex-determining chromosome” for homomorphic situations, and reserve “sex chromosome” for situations when a large chromosome region is nonrecombining and there is a genetically degenerate Y or W chromosome. When reviewing plants, we follow convention and use the word “gender” to indicate maleness and femaleness of diploid individuals in species with separate sexes (dioecy) and also to haploid gametophytes of species where these produce only male or female gametes. For diploid plants, we also use the conventional terms “ovules and pollen” for the haploid stage. For gonochoristic animals, we use the word sex to refer to whether an individual is male or female, and refer to their gametes as sperm and eggs, respectively. There should be no confusion with the alternative meaning “sexual reproduction” (as opposed to asexual).



autosome. Translocations between the sex chromosomes and autosomes may also occur, and may involve either proto-sex chromosomes or degenerated ones.

GENETIC MAPPING OF SEX-DETERMINING REGIONS

Table 2 summarizes plant and animal studies that have mapped the genomic region or regions associated with GSD. The term GSD is somewhat vague, and here we use it to mean that the alleles or alternative types of a particular linkage group (such as a Y or W chromosome) influence the probability of developing as a male or a female. Genetic control of sex need not be complete—in many organisms, environmental conditions, experimental treatments, or the genetic background, can affect the phenotypic sex of individuals. Our table therefore excludes species thought to have wholly environmental sex determination (ESD), but includes species where genetic influences have been demonstrated, even if environmental influences also affect or modify individuals' sex. The table also distinguishes between species with heteromorphic sex chromosomes (male or female heterogamety) and those where one sex is heterozygous for a sex-determining region, but without overt heteromorphism (in which case we specify whether females or males are the heterozygous sex).

In plants, “sex determination” is sometimes used to mean control of the floral organs involved in pollen and ovule production, as well as the developmental genetics of sterility mutants, such as gynodioecious melons, without normal male functions (MARTIN *et al.* 2009). Here, however, we maintain the usage that prevails in animal genetics and use this term only for genes affecting whether the individual plant develops as a male or a female. We will therefore not consider cytoplasmic male

sterility in plants (*e.g.*, FISHMAN and WILLIS 2006; CHASE 2007). We also exclude fungal mating-type genes (FRASER *et al.* 2004), because these species are not dioecious and have no gamete dimorphism resembling sperm and eggs. For the same reason, we excluded mating-type regions of isogamous algae (FERRIS *et al.* 2002).

Most of the mapping studies are based on linkage analysis of genetic markers typed in families, but FISH studies have also been very valuable, and genome sequencing is likely to become increasingly important. Most mapping so far has not identified the sex-determining genes (these are still known in only a few well-studied species), but has located the region(s) controlling sex determination (HOLLOWAY *et al.* 2000; HAWTHORNE 2001; LEE *et al.* 2004; SOLIGNAC *et al.* 2004; TELGMANN-RAUBER *et al.* 2007; SPIGLER *et al.* 2008).

Finally, recombination rates can be estimated separately in the male and the female parents of families (HEDRICK 2007; MANK 2009b). In some species, recombination is absent, or nearly absent, throughout the genome in the heterogametic sex (HUXLEY 1928; BERSET-BRÄNDLI *et al.* 2008). More often, recombination is suppressed in one sex in limited genomic regions (NARUSE *et al.* 2000; CHEN *et al.* 2007b; YIN *et al.* 2008), including the familiar situations in organisms such as mammals with no crossing over across most of the X and Y chromosomes in males. Recombination suppression in the region surrounding the sex-determining locus is a first step in the evolution of heteromorphic sex chromosomes (Figure 1).

FIGURE 1.—Potential changes during the evolution of sex-determining regions from different possible starting states and possible changes in their subsequent evolution. In the evolution of dioecy from hermaphroditism, females are assumed to evolve first through a recessive male-sterility mutation. Starting from ESD, females might arise by loss of the ability to respond to an environmental trigger for male development. Males in either pathway then arise by a linked mutation causing failure to develop female structures, resulting in proto-sex chromosomes. Before recombination suppression has become extensive and genetic degeneration of one sex chromosome has occurred, the linkage group associated with sex determination can change by the replacement of a new sex-determining gene or via the transposition of the existing sex-determining region to a new

TABLE 1
Glossary of terms

Term	Definition
Dioecy	plant species with separate male and female individuals (see gonochorism in animals, below).
Environmental sex determination (ESD)	sex-determining system where maleness or femaleness is induced by an environmental cue during development, such as the temperature control of sex in alligators and crocodiles.
Genetic sex determination (GSD)	the situation when alleles or alternative types of a particular linkage group (such as a Y or W chromosome) influence the probability of developing as a male or a female.
Genetic degeneration	the absence (or lack of function) of Y-linked alleles (in male-heterogametic systems), or W-linked ones (in female-heterogametic species) of many genes carried by the homologous sex chromosome.
Gonochorism	the term in animals referring to species with separate males and females (see dioecy in plants, above).
Hermaphroditism	in animals, species where individuals have both male and female gonads at the same time (simultaneous hermaphroditism), or an ovotestis, or where an individual may change sex (sequential hermaphroditism) during its life cycle. In plants, hermaphroditism denotes species whose flowers have both male and female parts.
Heterogamety	sex chromosome system in which males or females have heteromorphic sex chromosomes. In male heterogamety (including most mammals, <i>Drosophila</i> , and dioecious species of the plant <i>Silene</i>), males are XY and females XX, and in female heterogamety, including in birds and Lepidoptera, females are ZW, and males ZZ. Heterogamety is also sometimes used when the sex chromosomes are homomorphic (nonheteromorphic) to indicate which sex is heterozygous for the sex-determining region.
Monoecy	plant species with separate male and female flowers on the same individual plant.
Neo-sex chromosomes	systems where a sex chromosome has undergone a fusion or translocation with a formerly autosomal chromosome.
Proto-sex chromosomes	systems where a chromosome carries a newly arisen sex-determining gene or a newly evolved sex-determining region, but recombination suppression has not yet evolved and therefore there is no sex chromosome heteromorphism.
Sex chromosome heteromorphism	the degree to which the X and Y chromosomes (or Z and W chromosomes) differ from one another. This condition gives rise to either male or female heterogamety.
Subdioecy	presence of hermaphrodites as well as male and female individuals, found in some plant species populations.

Sex determination in plants and genetic mapping of sex-determining loci: We review data from plants first, because many dioecious plants probably evolved recently from hermaphrodite ancestors, and this recent origin is likely to underlie some major differences in the genetics of sex determination between plants *vs.* those animals with much older sex chromosomes, such as mammals and birds. In plants, as in animals, hermaphroditism or environmental sex determination (*e.g.*, TALAMALI *et al.* 2003) are possible ancestral states from which dioecy could have evolved. Dioecy in plants may also evolve from monoecy, where separate male and female flowers exist on the same individual (RENNER and RICKLEFS 1995; DORKEN and BARRETT 2004). In any of these ancestral states, all the genetic information required for the production of both anthers and pistils is present in each individual. The evolution of GSD must therefore involve mutations causing male and female sterility.

Dioecy in plants probably often evolved from hermaphroditism or monoecy by an initial recessive male-sterility mutation (which guaranteed outcrossing and resulted in a polymorphic population with females and

hermaphrodites, see Figure 1), followed by one or more mutations increasing male fertility, creating males (or male-biased hermaphrodites) but reducing female functions (CHARLESWORTH and CHARLESWORTH 1978). When these later male-defining mutations occur in a linked region on the homologous chromosome to that containing the male-sterility allele, this creates a proto-Y chromosome (WESTERGAARD 1958; CHARLESWORTH and CHARLESWORTH 1978). Because the initial male-sterility mutation is often recessive (homozygous individuals develop as females), the model predicts that females will be the homozygous sex and that the later female-suppressing mutations must be at least partially dominant. This model therefore predicts a predominance of male heterogamety in recently evolved dioecious species (CHARLESWORTH and CHARLESWORTH 1978), suggesting that female heterogamety may derive from male heterogametic ancestors.

Comprehensive reviews of dioecious plants indeed find that males are mostly the heterozygous sex (WESTERGAARD 1958; BULL 1983). Among the best studied dioecious taxa, male heterogamety has evolved twice in the genus *Silene* (MRACKOVA *et al.* 2008), twice more in the

Hawaiian genus *Schiedia* in the same family, Caryophyllaceae (SAKAI *et al.* 2006), and twice yet again in the genus *Rumex* in another family (NAVAJAS-PEREZ *et al.* 2005). In all these cases, dioecy probably evolved within the past 10–15 million years (dioecy in *Silene* is estimated to have evolved more recently than in *Rumex*, and dioecious *Schiedia* evolved more recently still).

Female heterogamety has been demonstrated in the genus *Cotula* and other members of the daisy family (LLOYD 1975; BULL 1983), and in *Populus* (YIN *et al.* 2008). In these taxa, dioecy may be older (*Populus* is in the family Salicaceae, whose members are almost all dioecious, suggesting a considerable age for dioecy), and male heterogamety could exist in species not yet studied. In the subdioecious plant, *Fragaria virginiana* (with hermaphrodites as well as males and females) females are heterozygous. However, males and females appear to have evolved very recently; hermaphrodites are also present, and recombinants occur between the sex-determining genes (SPIGLER *et al.* 2008). This may be an unexpected instance of *de novo* evolution of female heterogamety, and fully dioecious *Fragaria* species, if they exist, may have evolved recombination suppression in the sex-determining region.

In several plants with male-heterozygous systems, suppressed recombination is limited to small regions of the sex-determining chromosomes; sometimes, no markers fully linked to the sex-determining region have been discovered, even with dense mapping (Table 2). Possibly these species evolved dioecy recently, and there has simply not been enough time to evolve suppressed recombination across the entire sex-determining chromosome pair. Alternatively, evolution of suppressed recombination across most of the chromosome pair may not be inevitable (see our later discussion of the evolution of recombination suppression below).

The evolution of dioecy has been dated in only a handful of plant taxa, leaving it currently unclear whether all plant sex-determining chromosomes without large nonrecombining regions are young, and systems with heteromorphism older; there are no current mapping results for old angiosperm sex chromosomes. Phylogenetic studies suggest that dioecy evolved in the common ancestor of the families Begoniaceae, Cucurbitaceae, Datisceae, and Tetrameleaceae, probably from hermaphroditism (ZHANG *et al.* 2006), and it has probably been lost many times in the first two large families (MABBERLEY 1997). This suggests considerable age, consistent with known XY heteromorphic sex chromosomes in dioecious Cucurbitaceae (SINHA *et al.* 2007). By mapping genes to these chromosomes, it may be possible to estimate the chromosomes' age using sequence divergence between X–Y ortholog pairs and to determine whether the same genomic region is involved in sex determination in all these taxa.

The ages of more plant sex chromosomes should be estimated, including those of species with undifferentiated

potentially proto-X–Y pairs, such as papaya and the moss *Ceratodon purpureus* (see Table 2). It will therefore be important to sequence genes in the nonrecombining regions. In papaya, many sex-linked nongenic markers (mostly AFLPs) were found in a physically small nonrecombining sex chromosome region (LIU *et al.* 2004), which suggests high divergence of the male-specific region. However, the four papaya X–Y gene pairs so far studied all have synonymous site divergence <10%, suggesting that recombination stopped quite recently in this part of the chromosome pair (YU *et al.* 2008). Genes from other locations in the papaya nonrecombining region are, however, needed to test whether the entire male-specific region evolved suppressed recombination recently.

In many plants, the genetic basis remains unclear, including stinging nettles *Urtica dioica* (GLAWE and JONG 2009), *Byronia dioica* (CORRENS 1928), and *Antennaria dioica* (VON UBISCH 1936), but males are again probably the heterozygous sex and females homozygous (reviewed in WESTERGAARD 1958). These cases may involve recently evolved dioecy, breakdown of dioecy, or plants whose gender is subject to environmental influences. More phylogenetic and genetic studies (including using genetic markers) should clarify these situations.

Despite their fairly recent origins, some modifications of XY systems have occurred in several plants. XY₁Y₂ neo-sex chromosome systems have arisen in *Humulus japonicus* (KIHARA and HIRAYOSHI 1932; KIM *et al.* 2008), and *Silene diclinis* (HOWELL *et al.* 2009), and twice independently in *Rumex* (SMITH 1963, 1969; NAVAJAS-PEREZ *et al.* 2005), and *Viscum fischeri* has a multiple Y system (BARLOW and WIENS 1976). These situations probably evolved by X–autosome translocations (Figure 1; changing the ancestrally autosomal element into a chromosome that segregates from the new arm of the X, denoted by Y₂, while Y₁ denotes the ancestral Y), although fission of the Y cannot yet be ruled out in *Rumex*; genetic maps using genic markers might be able to establish whether the Y chromosomes still carry functional genes (as in *Silene*; see for instance MARAIS *et al.* 2008), in which case their gene content could be compared and this possibility tested.

Within the genus *Rumex*, an X–autosome balance sex-determining mechanism has also evolved, apparently from a male-determining Y mechanism retained in most species (NAVAJAS-PEREZ *et al.* 2005). It is less clear whether the few known plants with female heterogamety (ZW systems) evolved from XY systems, *vs. de novo* evolution of female heterogamety (see above). It will be interesting to discover whether taxa with known ZW dioecious plants, have relatives with male heterogamety. If so, phylogenetic studies like those in *Silene* (DESFEUX *et al.* 1996) and *Rumex* (NAVAJAS-PEREZ *et al.* 2005) might reveal transitions between XY and ZW sex chromosomal systems.

Overall, the results from plants indicate that dioecy has evolved many times, sometimes quite recently,

through major loss-of-function mutations producing unisexual females and males, usually with a male-determining “Y” chromosome. Plant sex-determining regions are probably often small, consistent with viability of homozygotes for the Y chromosome in some species (WESTERGAARD 1958). However, few species have been genetically mapped, and the physical sizes of the regions are mostly unknown, because finding multiple sex-linked markers can imply either a large physical size or a large divergence time. More phylogenetic studies are needed to determine ancestral *vs.* derived states and to estimate the ages of more sex-determining chromosomes.

Genetic mapping of sex-determining loci in animals:

Sex chromosome evolution in animals has mainly been studied using therian mammals (POTRZEBOWSKI *et al.* 2008), *Drosophila* (KOERICH *et al.* 2008), and birds (MANK and ELLEGREN 2007). Within each of these taxa, GSD arose just once, long ago (MATSUBARA *et al.* 2006; VEYRUNES *et al.* 2008). Despite originating separately, recent linkage maps of the therian mammal X and bird Z chromosomes have revealed that recombination between the sex chromosomes was initially suppressed over a limited region of the chromosome pair, and later, in both lineages, extended across most of the recombining “pseudoautosomal” genome regions, resulting in “evolutionary strata” (LAHN and PAGE 1999; SKALETSKY *et al.* 2003; ROSS *et al.* 2005; NAM and ELLEGREN 2008; see Figure 2). Similar strata are found in the plant *S. latifolia* (BERGERO *et al.* 2007). In birds, heteromorphism between the Z and W varies greatly (MANK and ELLEGREN 2007); the few ratite birds so far studied have only slight heteromorphism, implying a small region of restricted recombination (TSUDA *et al.* 2007), whereas, in more recently derived bird lineages (Neognathae—all modern birds except ratites and tinamous), the W chromosome is much smaller than the Z (SOLARI 1993). *In situ*

hybridization studies show that the nonrecombining part of the W chromosome in Neognathae has lost most genes that were present on the ancestral autosome (NISHIDA-UMEHARA *et al.* 2007; NANDA *et al.* 2008). Similar results have been found in snakes (MATSUBARA *et al.* 2006).

Compared with other animal clades, the sex chromosomes of mammals and birds are highly conserved, apart from addition of some repeated copies of testis-expressed genes to the Z and X chromosomes (MUELLER *et al.* 2008; ELLOTT *et al.* 2010). Most therian mammals have XY GSD, and the X has changed very little since the addition, ~166 million years ago, of the *q* arm of the current placental X to the ancestral therian X, which remains the marsupial X (WATERS *et al.* 2001). The gene content and gene order of the therian X chromosome have changed little (MURPHY *et al.* 1999; RAUDSEPP *et al.* 2004; DELGADO *et al.* 2009), apart from duplications of genes onto the X and movements of some genes off the X (POTRZEBOWSKI *et al.* 2009), and formation of neo-sex chromosomes in some species (reviewed in BAKLOUSHINSKAYA 2009). The avian Z chromosome gene content and order are even more conserved (DAWSON *et al.* 2007; BACKSTRÖM *et al.* 2008). As the existence of strata of different divergence levels between the sex chromosomes is the main new addition to our knowledge about the evolution of these chromosomes in mammals and birds to have emerged from genetic maps, and vertebrate sex determination was recently reviewed by GRAVES and PEICHEL (2010), the remainder of this review concentrates on recent genetic results on the genetic control of sex in nonmodel invertebrates and from fish, amphibians, and reptiles.

Invertebrates: GSD is found in many invertebrate taxa, and male heterogamety is widespread, although female heterogamety is documented in schistosomes (Platyhelminthes) (TAGUCHI *et al.* 2007; CRISCIONE *et al.* 2009), the lepidoptera (ABE *et al.* 1998), and some crustaceans

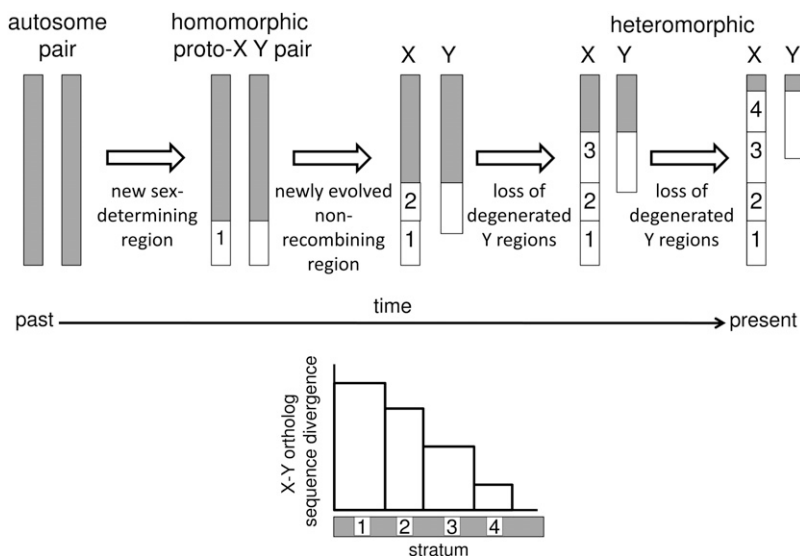


FIGURE 2.—Evolutionary strata are regions where recombination ceased at different times during sex chromosome evolution, as recombination suppression (open bars) spreads gradually over the length of the sex chromosomes. Regions where recombination ceased first have greater sequence divergence between X–Y or Z–W orthologous pairs of genes than regions where recombination ceased recently. In this illustration of an X–Y pair, sex-determining genes evolved in the initially recombining region labeled 1, and recombination ceased first in this region, creating stratum 1. This led to genetic degeneration of this stratum in the Y chromosome, and the evolution of chromosome heteromorphism. The process was repeated when recombination ceased in stratum 2, then stratum 3. The cessation of recombination in stratum 4 leaves only a small “pseudoautosomal region” on the X and Y chromosomes where recombination still occurs.

(LI *et al.* 2003; ZHANG *et al.* 2007). Many species have X0 systems, including some nematodes and insects, and these most likely evolved from XY GSD (SHEARMAN 2002), after genetic degeneration of the Y chromosome and movement of genes essential for male functions to other chromosomes. Such gene movement has been documented in *Drosophila pseudoobscura* (CARVALHO and CLARK 2005; KOERICH *et al.* 2008; LARRACUENTE *et al.* 2010). X0 species, such as *C. elegans* (GLADDEN *et al.* 2007), must also have a dosage-sensitive sex determination system, where the different amounts of one or more X chromosome transcripts between the sexes provide a “counting mechanism” relative to autosomal elements. It will be interesting to identify sex-determining mechanisms in other nematodes, and study their sex chromosomes, which may have undergone neo-sex chromosome formation and other changes (STREIT 2008).

In insects, chromosome fusions and translocations, involving both the X (MCALLISTER and CHARLESWORTH 1999) and the Y (MACKNIGHT 1939; BACHTROG and CHARLESWORTH 2002) have occurred many times, creating nonrecombining neo-sex chromosome systems in species such as *Drosophila*, where recombination does not occur in the heterogametic sex. Neo-sex chromosomes have also evolved by fusions in X0 systems of grasshoppers (WHITE 1973). Unlike *Drosophila*, many such species have crossing over in both sexes, and the added arm can continue to recombine, though rearrangements probably often decrease the chiasma frequency (reviewed in MARTI and BIDAU 1995; CHARLESWORTH and WALL 1998). Some termite species have multiple translocations involving the sex chromosomes, with chiasmata largely in terminal regions (LUYCX 1981). It is unclear whether such rearrangements were selected because it is advantageous to move genes to the sex chromosomes, and estimates of the relative rates of such events for both sex chromosomes and autosomes have not yet established whether the sex chromosomes are disproportionately involved in translocations (CHARLESWORTH *et al.* 1987).

The prevalence of male-heterogametic GSD suggests that it was probably the ancestral state when separate sexes were first established in these insects. However, the long evolutionary time since the insect ancestor makes inferring the ancestral state difficult. Even when two taxa both have XY systems, they may not have evolved from a single ancestral XY system—a new GSD system could have re-evolved in a lineage after being lost. For instance, the mosquito *Anopheles gambiae* resembles *Drosophila* in having a large region in which the X and Y do not recombine. However, these species diverged ~250 MYA, and genome sequencing shows that the ancestral *Drosophila* X (the chromosome arm homologous to the *D. melanogaster* X, or the pre-fusion portion of the *D. pseudoobscura* X), carries few genes present on the X chromosome of *A. gambiae*, and, conversely, most *A. gambiae* X chromosome genes are scattered on various

Drosophila autosomes (ZDOBNOV *et al.* 2002). Even among mosquitoes, the sex-determining genes may have been replaced. *Aedes* mosquitoes (like other Culicinae) have no sex chromosome heteromorphism, and so far no nonrecombining region has been found in the *Culex tarsalis* sex-determining chromosome (PRESGRAVES and ORR 1998; VENKATESAN *et al.* 2009). However, one arm of the *A. aegypti* sex-determining chromosome is probably homologous with the *D. melanogaster* X (NENE *et al.* 2007).

In several Dipteran insects, sex-determining genes are known to move their chromosomal locations without major chromosomal rearrangements. Some housefly populations have an XY system, and it is unknown whether the different genomic locations of sex-determining regions in other populations represent gene movements or replacements by new sex-determining genes (reviewed in HEDIGER *et al.* 2010). In *Megaselia scalaris*, there are no heteromorphic sex chromosomes (TRAUT *et al.* 1999), and a male-determining factor may have moved around the genome within a transposable element (TRAUT and WILLHOEFT 1990). This species may allow tests of whether a nonrecombining sex chromosome-like region has evolved from a single-gene system, but it is currently unclear whether there is indeed an associated nonrecombining region (TRAUT and WOLLERT 1998). Information about the existence of a nonrecombining region should emerge from new approaches for obtaining genetic markers and from genome sequencing (RASMUSSEN and NOOR 2009).

Although some of these changes could be due to movements of existing genes, sex-determining systems and genes differ among insects. Replacement of a sex-determining gene by another gene, on the same or a different chromosome, may be involved in the transitions between XY and ZW systems (for example, in the hessian fly, *Mayetiola destructor*; a new sex-determining gene competing with the ancestral system of male heterogamety seems to be present on a neo-W chromosome; BENATTI *et al.* 2009), or from a male-determining Y to an X–autosome balance or dosage-sensitive system. If sex-determining genes can be identified, it should become possible to distinguish such new sex-determining genes from movements of existing sex-determining genes.

Replacement of the sex-determining genes by a new gene controlling maleness or femaleness in insects often leaves the downstream parts of the pathway largely unchanged (WILKINS 1995; GRAHAM *et al.* 2003; PANE *et al.* 2005; SIEGAL and BAKER 2005; CHO *et al.* 2007). An example is the major change in the mechanism of sex determination represented by the haplodiploid system in Hymenopteran insects (reviewed by BULL 1983), where females lay either fertilized eggs that generally develop as females, or unfertilized ones that develop as haploid males.

Even among different Hymenoptera, the systems differ. In the wasp *Nasonia vitripennis*, sex is determined

through imprinting of the *N. vitripennis transformer* (*Nutra*) locus (*transformer* is a gene already known to act in the *Drosophila* sex-determining pathway; see MARIN and BAKER 1998). The maternal *Nutra* copy is silenced in developing embryos, and without transcription from this locus, individuals develop as male. Unfertilized eggs (with only a maternal *Nutra* copy) therefore develop as males, while fertilized eggs (expressing the paternal copy) develop as females (VERHULST *et al.* 2010). In bees, however, the signal to switch the developmental system to male or female involves “complementary sex determination” (*csd*), with a polymorphic locus, such that most diploid zygotes are heterozygous, and possession of different alleles serves as a signal that controls female development, while haploid eggs (or homozygous ones produced by inbred pairings) develop as males.

Even among different bees, one sex-determining gene has been replaced by another; in different species, the functional *csd* gene differs (confusingly, since the notation *csd* is used for the different genes). The gene with the *csd* function in honeybees (*Apis mellifera*) was found to be a duplicated and changed form of a pre-existing gene, *fem*. The *fem* gene is present in many non-*Apis* Hymenopteran species, including a bumblebee (*Bombus*), a stingless bee, *Melipona*, and even *N. vitripennis*, and is involved in a downstream step of sex determination, but not in the *csd* function (HASSELMANN *et al.* 2008a). *fem* apparently controls the female–male switch through expression of alternative RNA transcripts in a system reminiscent of *Drosophila* sex determination (see MARIN and BAKER 1998; SIEGAL and BAKER 2005). However, in honeybees and their close relatives *A. cerana* and *A. dorsata*, which diverged in the last 10 million years, *fem* is duplicated. The duplicate gene has taken over the *csd* function from an unknown gene that presumably had this function in an ancestor, while *fem* maintains the female developmental fate (HASSELMANN *et al.* 2008a,b; GEMPE *et al.* 2009).

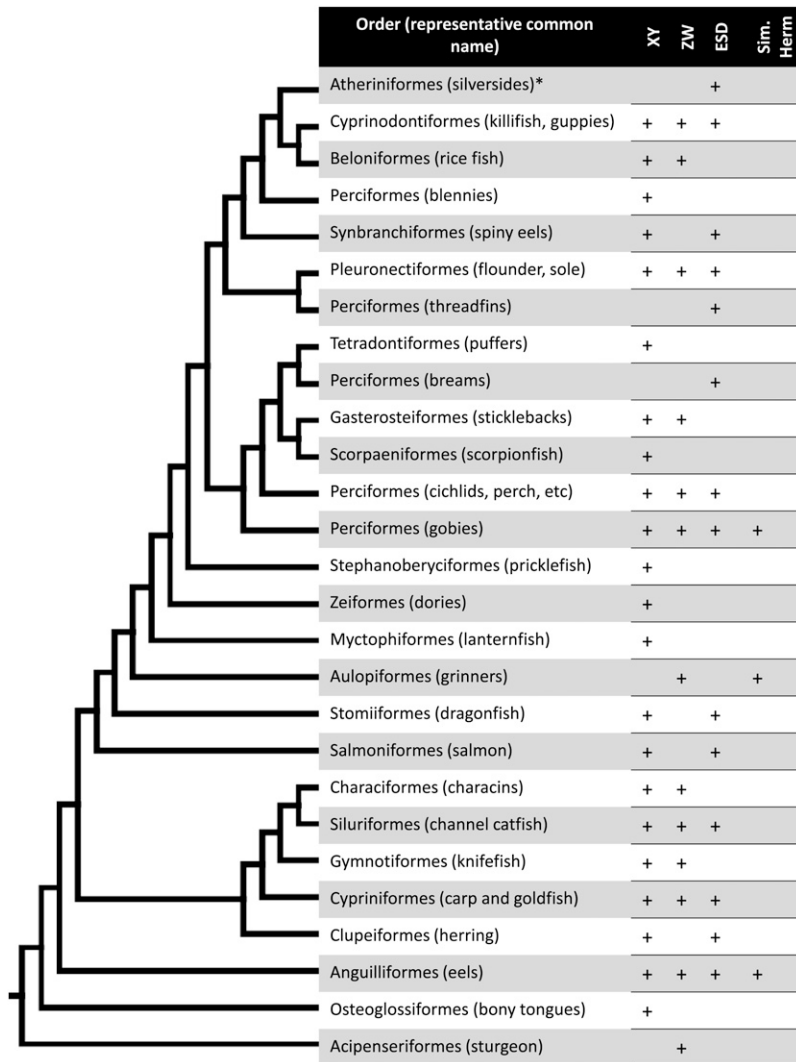
Fish: The fish ancestor is thought to have had separate males and females (SMITH 1975), as simultaneous hermaphroditism is rare in the clade (DEVLIN and NAGAHAMA 2002) and confined to the tips of the fish phylogeny, suggesting recent origins (MANK *et al.* 2006). However, determining whether the fish ancestor had GSD or ESD is difficult, because sex-determining mechanisms are known in only a small fraction of fish, and sex determination has undergone many changes (Figure 3 and reviewed in VOLFF *et al.* 2007), and the phylogeny of many higher-level fish taxa is unresolved (MANK *et al.* 2006; SETIAMARGA *et al.* 2009). In some clades, dioecy may have evolved from sequential hermaphroditism, which is widespread in fish, including the closest relatives of the androdioecious goby, *Lythrypnus dalli* (DRILLING and GROBER 2005), which could be in transition to or from dioecy.

Thus, although fish are not ideal organisms for studying the initial evolution of separate sexes, several taxa are excellent for studying modifications of GSD (MANK *et al.* 2006), and some may allow studies of the evolution of GSD from initial states other than simultaneous hermaphroditism. A particularly interesting situation is when there is single-gene control after a change in the sex-determining system. Although sex chromosome heteromorphism is known in some fish (see Table 2), many species have homomorphic sex-determining chromosomes and could have single sex-determining genes (and should, strictly, not be called XY or ZW systems). It is currently unclear whether such new sex-determining genes can trigger the evolution of a non-recombining sex chromosome-like region, representing a different origin for sex chromosomes from that in plants. If cases of young and heteromorphic sex chromosomes are found, they will be ideal for testing what has driven recombination suppression.

Many fish have large clutch sizes that facilitate linkage mapping, and genetic mapping in fish has revealed several new cases of GSD. For instance, genetic mapping in catfish (order Siluriformes) found a sex-determining chromosome with a small nonrecombining region, which is heterozygous in males (WALDBIESER *et al.* 2001). In the hiram, a flounder (order Pleuronectiformes), males are heterozygous (COIMBRA *et al.* 2003), but temperature also influences sex development (YAMAMOTO 1999). Another pleuronectiform, the half-smooth tongued sole, has female heterogamety, and many genes present only in females have been identified through a BAC library screen, suggesting W linkage (SHAO *et al.* 2010). Among fish whose genomes have been sequenced, the pufferfish (*Takifugu rubripes*, order Tetraodontiformes) has a male-heterozygous region (KIKUCHI *et al.* 2007). In the zebrafish (*Danio rerio*, Cypriniformes), sex is determined by a combination of genetic and environmental influences (SIEGFRIED and NUSSLEIN-VOLHARD 2008), while among its relatives, the goldfish has an XY system of GSD (ZHANG and WU 1985) and Leporinus (Characiformes) has a strongly heteromorphic ZW system, with largely heterochromatic W chromosomes, which have probably undergone W–autosome translocations (PARISE-MALTEMPI *et al.* 2007).

Many of these findings are from distantly related isolated species, among which it is impossible to recognize large syntenic blocks or, until the sex-determining loci are identified, determine gene homology. Comparative mapping in fish is further complicated by the fact that several whole genome duplication events have occurred within the clade (MEYER and SCHARTL 1999; CHRISTOFFELS *et al.* 2004; MANK and AVISE 2006). However, five clades have provided information about changes in sex-determining loci and could potentially lead to estimates of turnover rates.

In sticklebacks, genetic mapping has been important for evolutionary studies of adaptation and has led to the



development of a panel of molecular genetic markers (PEICHEL *et al.* 2001; SHAPIRO *et al.* 2009). Their use in different species in the family Gasterosteidae has revealed male heterogametic GSD in both *Gasterosteus aculeatus* and *Pungitius pungitius*. Both have sex chromosome heteromorphism, suggesting a large nonrecombining region (ROSS and PEICHEL 2008; SHAPIRO *et al.* 2009). The X_1X_2Y GSD system in *G. wheatlandi* (the sister species to *G. aculeatus*) is probably derived by a Y-autosome fusion involving an XY pair in a common ancestor (ROSS *et al.* 2009); surprisingly, this fused the linkage groups corresponding to the X chromosomes in *G. aculeatus* (LG19) and the more distant relative, *P. pungitius* (LG12). It is uncertain whether the ancestor of *G. aculeatus* and *P. pungitius* had an XY system (implying replacement or movement of the male-determining gene in one species) or whether one of these lineages evolved this independently from a different ancestral state. A more distant relative, *Apeltes quadracus*, has female heterogamety with visible chromosome heteromorphism. In *Culaea inconstans* (sister to

P. pungitius), there is no evidence of heteromorphic sex chromosomes or GSD, although markers linked to a sex-determining gene may be found once more markers and chromosomes are mapped in this species (ROSS *et al.* 2009).

The salmon family are somewhat similar. Early cytological studies showed clearly differentiated male heterogametic sex chromosomes in several species (THORGAARD 1977), and later genetic mapping in *Oncorhynchus*, *Salvelinus*, and *Salmo* confirmed male heterozygous GSD in most species, though with only slightly differentiated sex chromosomes and some environmental influence (NICHOLS *et al.* 2003; WORAM *et al.* 2004; GHARBI *et al.* 2006; ALFAQIH *et al.* 2008). However, like the sticklebacks, the sex-determining chromosomes in different species do not have the same gene content and probably did not evolve from a common single ancestral XY pair. Few genes are currently mapped, so the chromosomal homologies in the different species, and the evolutionary history of the changes, are not yet certain. Genetic mapping with

FIGURE 3.—Sex determination in the actinopterygian fishes (adapted from MANK *et al.* 2005, 2006). Shown is the supertree topology for the clade, presenting only the orders where sex determination is known for at least some members. Divergence dates of teleost clades are still contested and are therefore not indicated in the figure; however, it is helpful to note several nodes dated with a recently estimated molecular clock (SETIAMARGA *et al.* 2009). These include the origins of the Tetraodontiformes (80 MYA), the Beloniformes (115 MYA), the Salmoniformes (135 MYA), the Cypriniformes (190 MYA), and the Anguilliformes (220 MYA) and the divergence of the Gasterosteiformes from the Scorpaeniformes (150 MYA). Under environmental sex determination (ESD), we include sequential hermaphrodites where size plays a role in determining sex, as well as gonochorist species, where the environment can influence sex determination during development, and taxa with sequential hermaphrodites are noted separately (sim. herm.). Male heterogametic species are denoted by XY, even when there is no known chromosome heteromorphism, and female heterogametic species are similarly denoted by ZW. Sex determination in silversides has been shown to have a genetic component, although it is not known whether males or females are the heterozygous sex (CONOVER and KYNARD 1981).

microsatellite loci is starting to indicate some chromosomal homologies, even between distantly related fish (REXROAD *et al.* 2008). However, these homologies have not yet been shown to extend to entire chromosomes having the same gene content in distant relatives, and fish chromosomes appear to have been extensively rearranged (NARUSE *et al.* 2004) and it is unlikely that entire arms will be recognizable as they are in *Drosophila* and Hymenoptera. The X and Y chromosomes may have evolved *de novo* four or more times from different autosomes within the Salmonid family, or a sex-determining region may have moved to an autosome several times, creating a new, homomorphic sex-determining chromosome. It is also possible that a new sex-determining gene may have replaced a preexisting one in some species, and heteromorphism evolved later in some cases. A final alternative is that the recent whole genome duplication in this family created duplicate sex-determining genes, and different copies were lost in different lineages. Finer mapping could reveal synteny and exclude or confirm these scenarios.

The medaka, *Oryzias latipes* (Cyprinodontiformes) is a clear case of a new sex-determining gene replacing an unknown preexisting one. Linkage mapping (NARUSE *et al.* 2000) identified a sex-determining chromosome pair (9) containing a small (258 kb) region specific to males (KONDO *et al.* 2006). In this region, males are heterozygous, and there is no homology (and no recombination) with the homologous “X” chromosome (KONDO *et al.* 2006). Further genetic studies identified a duplicate of the DMRT1 gene in this region (MATSUDA *et al.* 2002; NANDA *et al.* 2002). This duplicate “DMY” gene has superseded an ancestral gene previously controlling the maleness development pathway, which is presumably still involved in some congeneric rice fishes (MATSUDA *et al.* 2002). In the region with homology between the X and Y that surrounds the sex-determining locus, recombination in males is lower than in females. Interestingly, when heterozygotes for the male-specific region are given a sex reversal treatment, making them female, they recombine at a rate like that of “XX” females (KONDO *et al.* 2001). The reduced recombination in males is therefore not directly caused by the insertion, but rather, depends on the sex phenotype. Sex-specific recombination rates have not been published for other genome regions, so it is unclear whether there are genome-wide differences in recombination.

Although DMRT1 homologs are involved in male determination in many animals, including *Drosophila*, *C. elegans*, mammals (RAYMOND *et al.* 2000; HAAG 2005), and birds (SMITH *et al.* 1999, 2009), the DMY gene is missing in several *Oryzias* species (KONDO *et al.* 2004; TANAKA *et al.* 2007), although these species retain the ancestral DMRT1 locus. Additional linkage mapping indicates independent changes to female heteroga-

met GSD in *O. javanicus* and *O. hubbsi* (TAKEHANA *et al.* 2008).

A particularly interesting group of fish for mapping studies includes the guppy, *Poecilia reticulata* and Xiphophorus, in the same superorder, Atherinomorpha, as medaka (Figure 3). Classical genetic work in both species found an XY GSD system and demonstrated that many male color patterns are caused by polymorphisms in genes fully or partially Y linked (WINGE 1927; KALLMAN 1970). However, the platyfish, *Xiphophorus maculatus*, also has a “W” chromosome carrying a female-determining gene. Xiphophorus species may be changing between female and male heterogamety, and in *X. maculatus*, like the frog *Rana ragosa* (see below), the X and W chromosomes are at least partially homologous (reviewed in SCHULTHEIS *et al.* 2009). The male color polymorphisms may be maintained by sexual antagonism, being advantageous to males, but disadvantageous to females (FISHER 1931; KALLMAN 1970; RICE 1984). These species therefore hold promise for testing the hypothesis that sexually antagonistic genes have driven selection for reduced X–Y recombination (see Figure 1 and below). Large numbers of SNP markers have been obtained for genetic mapping in guppies, using EST sequences (TRIPATHI *et al.* 2009a,b), and new progress can now occur in comparing the maps of these species’ sex chromosomes (MORIZOT *et al.* 1991, 2001). No marker completely linked to the sex-determining locus has yet been found in either species, but part of the guppy sex chromosome may recombine less frequently in males than females (TRIPATHI *et al.* 2009a). The guppy sex chromosome is homologous with the *O. luzonensis* sex chromosome (TANAKA *et al.* 2007) and with medaka autosome 12 (TRIPATHI *et al.* 2009b), raising the possibility that the guppy can help to identify the sex-determining region in the ancestor of the medaka. Recent estimates of the age of these taxa are large, suggesting that changes in sex determination may not be rapid.

In tilapia and cichlid species (family Cichlidae, in the ancient and polyphyletic order Perciformes), there are again species with sex-determining (nonheteromorphic) chromosomes called X, Y, Z, and W, plus environmental influences complicating genetic analyses (BAROILLER *et al.* 2009; SER *et al.* 2010). Tilapia are farmed for food, and males have higher growth rates than females in commercial production (BEARDSMORE *et al.* 2001), therefore a method to sex fingerlings would be valuable. However, changes in the sex-determining region may frustrate efforts to develop a single method to sex multiple species unless the same gene turns out to be involved across the clade.

Within the tilapiine cichlids (genus *Oreochromis*), use of genetic markers has shown that females are heterogametic in *O. karongae* (CNAANI *et al.* 2008) and *O. tanganycae* (CNAANI and KOCHER 2008), while in *O. niloticus* males are the heterozygous sex (CNAANI *et al.*

2008), and *O. aureus* has a polygenic sex-determination system (LEE *et al.* 2004). In the closely related genus *Tilapia*, one species, *T. zillii*, has GSD with heterozygous males, and the sex-determining chromosome is homologous to that in *O. niloticus*. In *T. mariae*, females are heterogametic, and the sex-determining chromosome is the same as that in *O. karongae* (LG3), but different from that in the male heterozygous species, LG1 (CNAANI *et al.* 2008). The genetic maps of Lake Malawi cichlids are almost perfectly colinear with those of tilapia cichlids (SER *et al.* 2010). In Lake Malawi cichlids, female heterogamety may have evolved recently from male heterozygosity (ROBERTS *et al.* 2009; SER *et al.* 2010), and a similar transition may have occurred independently in *Oreochromis* (CNAANI *et al.* 2008). It will be necessary to study more sets of closely related species to infer the rates and directions of changes and to determine whether these changes are due to transpositions of sex-determining genes or to the origin of new sex-determining genes, coopting the sex-determination pathway.

Amphibians and reptiles: Most amphibians exhibit GSD and possess homomorphic sex-determining chromosomes (EGGERT 2004). There have been many shifts between male and female heterogamety (HILLIS and GREEN 1990), including among different populations of the Japanese frog, *R. ragosa* (MIURA *et al.* 1998), where genetic mapping has shown that the X and W chromosomes are homologous (UNO *et al.* 2008). It is not yet understood how the change from one state to the other occurred, but the male heterozygous (XY) state is probably ancestral (OGATA *et al.* 2008). Genetic mapping in salamanders (SMITH and VOSS 2009) found that females are the heterozygous sex, and the sex-determining locus is not in a chromosome region with reduced recombination. In the European tree frog, *Hyla arborea*, males (the heterozygous sex) are nearly achiasmatic (BERSET-BRÄNDLI *et al.* 2008). The current genetic map is based on noncoding DNA so it is not yet known whether the male-specific region has degenerated or experienced gene loss.

In reptiles, temperature-based ESD predominates and was probably the ancestral state from which ZW GSD has repeatedly evolved, with few reversals (JANZEN and PHILLIPS 2006; ORGAN and JANES 2008). These inferences remain tentative, as there is no definitive reptile phylogeny (OLMO 2005; POKORNA and KRATOCHVIL 2009). In the Australian dragon lizards, FISH mapping combined with phylogenetic analysis has demonstrated that female heterogametic sex determination evolved at least twice independently from temperature-sensitive ESD (EZZAZ *et al.* 2005, 2009). Separate sexes and GSD in birds probably evolved independently of the change to GSD in reptiles, since the reptile DMRT1 homolog is autosomal (KAWAI *et al.* 2007).

In animals, the transition from ESD to GSD may be more common than the reverse, although changes from GSD to ESD may have occurred in nematodes (HAAG

2005). It has been suggested that ESD may be an “evolutionary trap” (JANZEN and PHILLIPS 2006; POKORNA and KRATOCHVIL 2009) or that GSD may accelerate speciation, leading to most lineages having GSD, even with similar rates of transition (ORGAN *et al.* 2009). However, these alternative hypotheses are difficult to differentiate from each other, and no clear mechanism is known either to prevent reversion to ESD or promote speciation.

LESSONS FROM GENETIC MAPPING OF SEX-DETERMINING LOCI

Male and female heterogamety: In clades with multiple types of GSD, including reptiles, fish, and plants, males are generally more often heterogametic or heterozygous for the sex-determining region than females (WESTERGAARD 1958; JANZEN and PHILLIPS 2006; MANK *et al.* 2006). However, as explained above, in animals it is often unclear whether sex determination evolved from a situation without GSD, or by movement of a preexisting sex-determining gene, or by creation of a new one. The relative frequencies of male and female heterogamety will depend on the rates of such changes.

It has been argued that male heterogamety may evolve more readily, because, in animals, femaleness is probably often the developmentally “default state,” and maleness requires a positively male-determining gene (RAYMOND *et al.* 2000). With male heterogamety, the male-limitation of Y chromosomes (or Y-like regions) allows the male-determining gene to be restricted to males. Thus, female heterogametic GSD, where no genomic region has male-limited inheritance, may make it more difficult to specify male development. Known mechanisms of female heterogametic GSD indeed appear to be complex, with dosage-sensitive genes involved in male sex determination located on the Z chromosome of birds (SMITH *et al.* 2009) and the lizard *Pogona vitticeps* (QUINN *et al.* 2007), and even more complicated interactions of the Z and W chromosomes in *Xenopus* frogs (YOSHIMOTO *et al.* 2008). However, femaleness is not always the default: in zebrafish, the germ line is required for ovary development, and in its absence the gonad develops as a testis (SIEGFRIED and NUSSLEIN-VOLHARD 2008).

Moreover, this argument can apply only to species whose GSD has evolved from a species that already has sex chromosomes, not to the initial stages of the evolution of separate sexes. Table 3 summarizes the types of selection that might be expected following the evolution of sex-determining regions from different ancestral states. In the initial evolutionary stage, when GSD evolved from hermaphroditism or ESD, the genes involved would not be confined to one sex. When GSD evolves from hermaphroditism in animals or monoecy in plants (diagrammed in Figure 1), there is, of course, no

default sex. If females evolve first (see above), this predicts that males will generally be the heterozygous sex, because loss-of-function mutations creating females are probably generally recessive, and females would be homozygous.

However, GSD in animals seems often to have evolved from ESD, rather than from a simultaneously hermaphroditic state. In species with ESD, femaleness could, of course, be the default state, with an environmental trigger inducing maleness. This could change to GSD by the promoter controlling the expression of a male-determining gene becoming constitutive instead of inducible (VALENZUELA and SHIKANO 2007; VALENZUELA 2008); males would then be determined either genetically (without the environmental trigger) or environmentally. Under this scenario, maleness would most likely be dominant (assuming dominance of mutations causing constitutive expression; LEMOS *et al.* 2008), and thus females would again be the homozygous sex. Unless there is a permanent environmental change (to the female-determining environment), evolution of full GSD would require a second genetic change, abolishing the response to the environmental trigger in individuals not carrying the constitutive maleness mutation, to create females in all environments (see Figure 1). Alternatively, GSD could arise by loss-of-function mutations that abolished responses to environmental cues determining male or female development (assuming that development would then switch to the other sex). Either sex could then be the heterozygous sex. In either scenario, during the initial stages before a Y chromosome or Y-like region evolves, the factor determining maleness could recombine with the female-determining one, yielding sterile individuals, so selection would presumably favor linkage of the two genes.

Suppression of recombination and sex chromosome heteromorphism: All the organisms in Table 2 possess GSD, yet many of them lack visibly dimorphic sex chromosomes. This might suggest that, in contrast to the old and highly conserved sex chromosomes in birds, therian mammals, and *Drosophila*, most animal GSD systems and some of plants are quite young, and the sex chromosome pair have not yet diverged. In many animals, young homomorphic sex chromosomes may indicate a recent change in the location of the sex-determining gene (see Figure 1). However, the degree of sex chromosome heteromorphism is not a good indicator of age. First, chromosome rearrangements can produce heteromorphism, as in rainbow trout (PHILLIPS *et al.* 2009), and even newly evolved sex chromosome systems could be heteromorphic. Furthermore, neither suppressed recombination nor heteromorphism always evolve in old-established sex chromosomes. Indeed, the homomorphic sex chromosomes in ratite birds and some reptiles clearly carry ancient GSD genes. To date, few sequences are available for comparing genes on XY or ZW pairs to estimate the

time since recombination between these alleles ceased and thus a minimum age of a sex chromosome pair.

Moreover, in species with developmental plasticity in sexual differentiation, and when recombination suppression between the sex chromosomes depends on the phenotypic, rather than genotypic sex, as described above in the medaka (KONDO *et al.* 2001), occasional sex-reversed individuals may allow recombination between the Z and W or X and Y chromosomes. Old-established sex chromosomes could thus remain undifferentiated, apart from the sex-determining genes (PERRIN 2009). This may be most common in poikilothermic vertebrates, where GSD is often accompanied by environmental influences, especially temperature, as in many fish, such as salmon (DEVLIN and NAGAHAMA 2002) and platyfish (MACINTYRE 1961). This could explain the prevalence of largely homomorphic sex chromosomes in fish (ARKHIPCHUK 1995). More studies of recombination between sex chromosomes in sex-reversed individuals are needed and also more studies of recombination rates in the two sexes.

The role of sexual antagonism in recombination suppression and GSD turnover: Comparative mapping in closely related species has provided new details about the diversity of GSD systems, and similar types of changes are observed in very different taxa, from plants to mammals, including fusions and translocations creating neo-sex chromosomes, gene replacements (sometimes changing the identity of the sex-determining chromosome), and transitions between male and female heterogamety. Sexual antagonism may be involved in the evolution of some of this diversity in GSD, as close linkage with a sexually antagonistic gene on an autosome can create an advantage for a new sex-determining factor (VAN DOORN and KIRKPATRICK 2007). Anecdotal evidence exists for turnover of sex determination due to sexual conflict in cichlid (ROBERTS *et al.* 2009) and stickleback fish (KITANO *et al.* 2009). The evidence for considerable sex differences in gene expression in animals (KOPP *et al.* 2003; MORROW *et al.* 2008; MAINGUY *et al.* 2009; MANK 2009a) suggests that sexual antagonism is possible at many genes. However, several other models for changes in GSD exist (BULL 1983; VUILLEUMIER *et al.* 2007; KOZIELSKA *et al.* 2010), and it is difficult to test which model best fits the observed patterns.

It has often been suggested that the evolution of suppressed recombination between sex chromosomes may be due to sexual antagonism. Once a sex-determining region has evolved, mutations that are advantageous in males but disadvantageous in females are particularly likely to invade a population if they arise at loci linked to the male-determining region (FISHER 1931; RICE 1984). They can then sometimes remain polymorphic, with allele frequencies differing in the two sexes, which favors reduced recombination with the sex-determining region (BULL 1983; RICE 1987; PATTEN and HAIG 2009). Such selection evidently acts when separate sexes are newly

TABLE 2
Genetically mapped regions of sex determination in nonmodel plants and animals

Species	Type of markers	Type of GSD	Comments
Plants			
Non-flowering plants			
<i>Ceratodon purpureus</i> (moss)	AFLPs (McDANIEL <i>et al.</i> 2007)	Males heterozygous	
<i>Marchantia polymorpha</i> (liverwort)	Various (OKADA <i>et al.</i> 2001)	Male heterogametic	
Dicotyledons			
Rosid clade			
<i>Vitis</i> (grape vine, Rhamnales)	SSRs, SSCPs, morphological traits (MARGUERIT <i>et al.</i> 2009)	Subdioecious ^a	Three alleles for a single gene appears to confer maleness, femaleness, or dioecy Male-determining Y
<i>Carica papaya</i> (papaya, Brassicales)	RAPDs, AFLPs, SSRs (SONDUR <i>et al.</i> 1996; MA <i>et al.</i> 2004; CHEN <i>et al.</i> 2007a)	Male heterogametic	
Basal Eudicots			
<i>Silene latifolia</i> (Caryophyllales)	SSCPs, genic SNP markers (GUTTMAN and CHARLESWORTH 1998; BERGERO <i>et al.</i> 2007)	Male heterogametic	Male-determining Y, at least three genes influencing male fertility present on Y chromosome
<i>Spinacia oleracea</i> (spinach, Caryophyllales)	AFLPs and SSRs (KHATTAK <i>et al.</i> 2006)	Males heterozygous	
<i>Rumex</i> species (sorrel and dock, Caryophyllales)	Cytogenetics only (BARTKOWIAK 1971; SINGH and SMITH 1971)	Male heterogametic (XY or XY ₁ Y ₂)	Male-determining Y- or X-autosome balance (NAVAJAS-PEREZ <i>et al.</i> 2005)
<i>Salix viminalis</i> , Populus (willow, poplar and aspen, Malpighiales)	AFLPs (SEMERIKOV <i>et al.</i> 2003); SSRs (YIN <i>et al.</i> 2008)	Females heterozygous	
<i>Cannabis sativa</i> (Urticales)	AFLPs (PEIL <i>et al.</i> 2003)	Male heterogametic	
<i>Humulus lupulus</i> (hops, Rosales)	RAPD (POLLEY <i>et al.</i> 1997); RAPDs, AFLPs, SSRs (SIEFFELDER <i>et al.</i> 2000)	Male heterogametic	
<i>Fragaria virginiana</i> (wild strawberry, Rosales)	SSRs (SPIGLER <i>et al.</i> (2008)	Subdioecious ^a , females heterozygous	Two linked genes affecting sex determination
Asterid clade			
<i>Actinidia chinensis</i> (kiwifruit, Ericales)	SSRs (FRASER <i>et al.</i> (2009)	Male heterozygous	
Monocotyledons			
<i>Asparagus officinalis</i> (asparagus)	AFLPs (REAMON-BUTTNER <i>et al.</i> 1998; TELGMANN-RAUBER <i>et al.</i> 2007)	Males heterozygous	Sex chromosomes may be related to <i>Silene</i> and <i>Carica</i> sex chromosomes (TELGEMANN-RAUBER <i>et al.</i> 2007)
Animals			
<i>Dioscorea tokoro</i> (wild yam)	AFLPs (TERAUCHI and KAHL 1999)	Males heterozygous	
Invertebrates			

(continued)

TABLE 2
(Continued)

Species	Type of markers	Type of GSD	Comments
<i>Schistosoma mansoni</i> (blood fluke)	SSRs (CRISCIONE <i>et al.</i> 2009); FISH (TAGUCHI <i>et al.</i> 2007)	Female heterogametic	
<i>Haliotis discus</i> (Pacific abalone)	AFLPs, RAPDs, and SSRs (LIU <i>et al.</i> 2006)	Male heterogametic	
Insects			
<i>Anopheles gambiae</i> (mosquito)	BACs (KRZYWINSKI <i>et al.</i> 2004)	Male heterogametic	
<i>Culex tarsalis</i> (mosquito)	SSRs (VENKATESAN <i>et al.</i> 2009)	Males heterozygous	
<i>Apis mellifera</i> (honey bee)	RAPDs (HUNT and PAGE 1994); SSRs and SNPs (SOLIGNAC <i>et al.</i> 2004)	Haplodiploid	Complementary sex determination
<i>Bracon</i> (wasp)	RAPDs (HOLLOWAY <i>et al.</i> 2000)	Haplodiploid	
<i>Bombus terrestris</i> (buff-tailed bumblebee)	RAPDs and microsatellites (GADAU <i>et al.</i> 2001)	Haplodiploid	
<i>Megyetiola destructor</i> (Hessian fly)	RAPDs (FORMUSOH <i>et al.</i> 1996)	Male heterogametic	Postzygotic chromosome elimination (BENATTI <i>et al.</i> 2009)
<i>Bombyx mori</i> (silkworm)	RAPDs (ABE <i>et al.</i> 1998)	Female heterogametic	W chromosome is homologous to wild ancestor, <i>B. mandarina</i> .
<i>Allenemabius socius</i> (ground cricket)	RAPDs and allozymes (CHU and HOWARD 1998)	Male heterogametic	
<i>Leptinotarsa decemlineata</i> (Colorado potato beetle)	AFLPs and anonymous codominant markers (HAWTHORNE 2001)	Male heterogametic (X0)	
Crustaceans			
<i>Penaeus japonicus</i> (kurua prawn)	AFLPs (LI <i>et al.</i> 2003)	Female heterogametic	
<i>Litopenaeus vannamei</i> (Pacific white shrimp)	AFLPs and SSRs (ZHANG <i>et al.</i> 2007)	Female heterogametic	
Fish			
Catfishes (Siluriformes)			
<i>Ictalurus punctatus</i> (channel catfish)	SSRs (WALDBIESER <i>et al.</i> 2001)	Males heterozygous	
Flatfishes (Pleuronectiforms)			
<i>Paralichthys olivaceus</i> (Japanese flounder)	SSRs and AFLPs (COIMBRA <i>et al.</i> 2003)	Male heterozygous	
<i>Scophthalmus maximus</i> (turbot)	SNPs (MARTINEZ <i>et al.</i> 2009)	Male heterozygous	
<i>Cynoglossus semilaevis</i> (sole)	AFLP (CHEN <i>et al.</i> 2007a); BAC screening (SHAO <i>et al.</i> 2010)	Female heterogametic	
Pufferfish (Tetraodontiformes)			
<i>Takifugu rubripes</i> (fugu)	Genetic markers (KIRUCHI <i>et al.</i> 2007)	Males heterozygous	
Sticklebacks (Gasterosteiformes)			
<i>Pungitius pungitius</i> (ninespine stickleback)	SSRs (SHAPIRO <i>et al.</i> 2009); SSRs and FISH (ROSS <i>et al.</i> 2009)	Male heterogametic	Sex determination is in different location from other stickleback species.
<i>Gasterosteus aculeatus</i>	SSRs (PEICHEL <i>et al.</i> 2004)	Male heterogametic	<i>G. wheatlandi</i> males are X ₁ X ₂ Y.

(continued)

TABLE 2
(Continued)

Species	Type of markers	Type of GSD	Comments
(threespine stickleback), <i>G. wheatlandi</i> (black-spotted stickleback)	SSRs and FISH (ROSS <i>et al.</i> 2009)	Females heterogametic	
<i>Apeltes quadracus</i> (fourspine stickleback)	SSRs and FISH (ROSS <i>et al.</i> 2009)		
Salmon (Salmoniformes)			
<i>Salvelinus alpinus</i> (Arctic char), <i>S. namaycush</i> (Atlantic salmon), <i>Salmo salar</i> (Atlantic salmon), <i>S. trutta</i> (brown trout)	SSRs and AFLPs (WORAM <i>et al.</i> 2003, 2004) SSRs and AFLPs (WORAM <i>et al.</i> 2003); SSRs and allozymes (GHARBI <i>et al.</i> 2006)	Males heterozygous Males heterozygous	Y chromosome is not orthologous to other salmonids. Y chromosome is not orthologous to other salmonids.
<i>Oncorhynchus mykiss</i> , <i>O. kisutch</i> , <i>O. dakti</i>	SSRs and AFLPs (MCCLELLAND and NAISH 2008; WORAM <i>et al.</i> 2003); various (NICHOLS <i>et al.</i> 2003); SSRs and FISH (ALFAQIH <i>et al.</i> 2008; REXROAD <i>et al.</i> 2008)	Males heterozygous	
Cichlids (Perciformes)			
<i>Oreochromis karongae</i> , <i>O. aureus</i> , <i>O. tanganyica</i>	SSRs and FISH (CNAANI and KOCHER 2008; CNAANI <i>et al.</i> 2008)	Females heterogametic	Females heterozygous in some <i>O. aureus</i> populations (LEE <i>et al.</i> 2004) Only in some populations (LEE <i>et al.</i> 2003)
<i>Oreochromis niloticus</i> (Nile tilapia)	SSRs and FISH (CNAANI <i>et al.</i> (2008)	Male heterozygous	
<i>Tilapia mariae</i> (spotted tilapia)	SSRs and FISH (CNAANI <i>et al.</i> 2008)	Female heterogametic	
<i>Tilapia zillii</i> (red-bellied tilapia)	SSRs and FISH (CNAANI <i>et al.</i> 2008)	Male heterozygous	
<i>Aulonocara baenschi</i> , <i>Metriacrima barlowi</i> , <i>M. phaeos</i> , <i>M. zebra</i> , <i>Pseudotropheus polli</i>	SSRs (SER <i>et al.</i> 2010)	Males heterozygous	Heterozygosity is associated with Lake Malawi cichlid linkage group 7
<i>Labotropheus trewavasae</i> , <i>Metriacrima callainos</i> , <i>M. fairzilberii</i>	SSRs (SER <i>et al.</i> 2010)	Females heterozygous	Heterozygosity is associated with Lake Malawi cichlid linkage group 5
<i>Metriacrima pyrrsonatus</i>	SSRs (SER <i>et al.</i> 2010)	Both male and female heterozygosity	Both Lake Malawi cichlid linkage groups 5 and 7 present in populations
Rice fish (Belontiiformes)			
<i>Oryzias latipes</i>	Chromosome walking, FISH (MATSUDA <i>et al.</i> 2002); SSRs (KIMURA <i>et al.</i> 2006)	Males heterozygous	Sex determined by DMY, a recent duplicate of DMRT1
<i>Oryzias javanicus</i> , <i>O. hubbsi</i>	SNPs and FISH (TAKEHANA <i>et al.</i> 2008)	Females heterogametic	<i>O. javanicus</i> W chromosome is not homologous to <i>O. hubbsi</i>
<i>Oryzias luzonensis</i> , <i>O. dancena</i> , <i>O. minutillus</i>	SNPs and FISH (TAKEHANA <i>et al.</i> 2007; NAGAI <i>et al.</i> 2008)	Males heterozygous	Y chromosomes of <i>O. luzonensis</i> , <i>O. dancena</i> , and <i>O. minutillus</i> are not homologous

(continued)

TABLE 2
(Continued)

Species	Type of markers	Type of GSD	Comments
Killifish and livebearers (Cyprinodontiformes)			
<i>Nothobranchius furzeri</i> (African killifish)	SSRs (VALENZANO <i>et al.</i> 2009)	Males heterozygous	
<i>Poecilia reticulata</i> (guppy)	SNPs (TRIPATHI <i>et al.</i> 2009a)	Male heterogametic	W chromosome present in some <i>X. maculatus</i> populations (KALLMAN 1984)
<i>Xiphophorus</i>	Allozymes and morphological markers (MORIZOT <i>et al.</i> 1991)	Male heterogametic	
Amphibians			
<i>Hyla arborea</i> (European tree frog)	SSRs (BERSET-BRÄNDLI <i>et al.</i> 2006)	Male heterozygous	Males are achiasmate
<i>Ambystoma mexicanus</i> (tiger salamander)	SNPs (SMITH and VOSS 2009)	Female heterozygous	
<i>Rana rugosa</i> (Japanese frog)	Phylogenetic inference from sex-linked gene (MURA <i>et al.</i> 1998) and FISH (UNO <i>et al.</i> 2008)	Female and male heterogametic populations	
Reptiles			
Dragon lizards (Agamidae)			
<i>Pogona vitticeps</i> , <i>P. barbata</i>	FISH (EZAZ <i>et al.</i> 2005) chromosome walking (QUINN <i>et al.</i> 2010)	Female heterogametic	Z and W are microchromosomes
<i>Amphibolurus nobbi</i>	FISH (EZAZ <i>et al.</i> 2009)	Female heterogametic	ZW sex chromosomes probably orthologous to those in <i>Pogona</i>
<i>Ctenophorus fordi</i>		Female heterogametic	ZW sex chromosomes are not orthologous to those in <i>Pogona</i> and <i>Amphibolurus</i>

Heteromorphic sex chromosomes are termed either male or female heterogamety (XY and ZW systems, respectively), and sex-determining chromosomes without marked heteromorphism are termed male or female heterozygosity. AFLP, amplified fragment length polymorphism; BAC, bacterial artificial chromosome; FISH, fluorescent in situ hybridization; RFLP, random amplified length polymorphism; RAPD, random amplified length polymorphism; SNP, single nucleotide polymorphism; SSCP, single strand conformation polymorphism; SSR, simple sequence repeat, also known as microsatellites.

^aHermaphrodites present as well as males and females.

TABLE 3
Selective consequences that might be predicted when sex-determining regions evolve from the different potential starting states shown in Figure 1

Predicted effects	Possible starting states			
	Hermaphroditism (no preexisting sex-specific development)	Monoecy	Sex-specific developmental functions already established	Preexisting GSD system
Initial genes changed	Major sterility mutations (involving at least two sex-determining genes)	Probably often major sterility mutations (involving at least two sex-determining genes)	New male or female determiners or major sterility mutations	New sex-determining gene, involving either loss- or gain-of-function mutations
Later changes in sex development and other pathways	Many other genes evolve sex-specific functions	Probably few changes	Probably few changes	Possibly several changes if sexual development is due to new genes, which interact with other pathways
Recombination suppression	Yes, initially in region with the sex-determining genes	Yes, initially in region with the sex-determining genes	Yes, initially in region with the sex-determining genes	Initially no, unless linked sexually antagonistic alleles arise in the region with the sex-determining genes

evolving and mutations at separate loci have opposite effects on male and female fertility (CHARLESWORTH and CHARLESWORTH 1978). After these initial mutations have become completely linked and behave as a single genetic locus, or when there is a single-locus sex-determining system because a new gene has replaced a previous system, sexually antagonistic alleles should start to accumulate at linked loci. It is currently unknown whether any new sex-determining gene that has replaced an existing one has been followed by evolution of a new nonrecombining region, but, if sexual antagonism is indeed important for evolution of nonrecombining sex chromosome regions, new sex-determining regions such as the medaka DMY region should also eventually do so. However, movement of an existing sex-determining region, creating a new sex-determining chromosome from a former autosome, may sometimes directly produce a region of suppressed recombination because of the chromosome rearrangement involved (see above).

Systems with greater levels of sexual antagonism may be the most likely to undergo progressive recombination suppression, as there are simply more sexually antagonistic loci, or loci with potentially sexually antagonistic alleles, near the sex-determining region. Highly heteromorphic sex chromosomes might therefore be most common in species with high levels of sexual conflict, and with sexual dimorphism, a likely indicator of sexual antagonism (BADYAEV 2002). The male color polymorphisms in guppies and platyfish, mentioned above, are probably sexually antagonistic (FISHER 1931), as are the female coloration patterns in Lake Malawi cichlids, so these species hold promise for testing whether sexually antagonistic genes select for reduced recombination between the sex chromosomes. The scarcity of heteromorphic sex chromosomes in plants might, for instance, reflect low sexual dimorphism (ASHMAN 2003, 2005). However, it is not yet clear whether plant sex chromosomes evolved long enough ago for evolution of heteromorphic sex chromosomes to be expected.

Conservation in sex determination: We have emphasized changes, but it is well established that some of the downstream components of the sex determination pathway in animals are retained over long evolutionary times, even across lineages with both male- and female-heterogametic GSD, as well as ESD. DMRT1 is involved in determining maleness in many animals, ranging from invertebrates to mammals (FERGUSON-SMITH 2007), but it is not always on the sex chromosomes. DMRT1 maps to the Z chromosome in birds, a duplicate is located on the W chromosome in *Xenopus*, and the gene is important in sex determination in both clades (YOSHIMOTO *et al.* 2008; SMITH and VOSS 2009, but see KUROIWA 2009 and ZHAO *et al.* 2010), whereas, in most male heterogametic species, DMRT1 is autosomal (FERGUSON-SMITH 2007), and is a downstream component in sex de-

termination. The medaka fish is a notable exception where a duplicate of *DMRT1* has assumed control of male development, rather as the honeybee *csd* gene has done in the very different haplodiploid sex determination system of Hymenoptera. In other cases, the earliest-acting controls have been lost from the sex determination pathway. In some mammals, the Y-linked gene *SRY* is the upstream regulator of *DMRT1*. *SRY* was probably recently recruited to the sex determination pathway, as it is restricted to therians (WILLIAMS and CARROLL 2009), but the *SRY* gene is entirely absent in voles (JUST *et al.* 1995; CHEN *et al.* 2008).

In dioecious plants, very little is known about the molecular mechanisms of sex determination. Except in quite closely related plants, it is not possible to identify large regions of homologous genome, making it difficult to test whether the same chromosome carries sex-determining genes in different dioecious plants. However, it is likely that the sex-determining genes vary among taxa. Even within the genus *Silene*, there have been two independent origins of male heterogametic systems (MRACKOVA *et al.* 2008). It is estimated that large numbers of genes in plants can produce mutations with male or female sterility (OHNISHI 1985; JOHNSON-BROUSSEAU and MCCORMICK 2004; PEIFFER *et al.* 2008). Different genes may therefore have undergone different sterility mutations in different dioecious taxa. One motivation for genetically mapping sex-determining regions is to identify the genes involved. In species with small sex-determining regions or single gene control, this may be possible, allowing the independent origins of sex determination to be tested, but it will remain very difficult when there is a large nonrecombining region.

CONCLUDING REMARKS AND FUTURE DIRECTIONS

The rapid acceleration in development of genetic markers for nonmodel organisms has already made possible species- and clade-specific mapping of GSD in a variety of interesting plants and animals. Comparative genetic mapping of GSD in closely related clades can reveal whether apparently similar types of GSD are indeed due to shared ancestry and have the same sex-determining region, or whether changes have occurred in the location, and perhaps the identity, of the genes controlling sex determination. This can provide information about the directions of the changes that have occurred, a necessary preliminary to asking about the selective mechanisms of changes in sex determination and about how elements of the sex determination pathway can evolve while conserving the important functions.

Even without identifying the actual genes involved in sex determination, genetic linkage mapping of GSD in more taxa will reveal nonrecombining regions in species where recombination suppression has evolved. Linkage mapping can reveal X–Y and Z–W orthologs, which can

then be used to date the divergence of the sex chromosomes and aid in understanding the age of GSD systems. This type of information on more and more diverse taxa will be needed to understand the evolutionary patterns and time course of events involved in the evolution of GSD and of sex chromosomes. Without such information, it will not be possible to understand the selective forces underlying these changes.

We thank Brian Charlesworth, Crispin Jordan, and Tobias Uller for helpful discussions, three anonymous reviewers for helpful comments, and we are grateful for funding from the Royal Society (to J.E.M.) and the Biotechnology and Biological Sciences Research Council (to D.C. and J.E.M.).

LITERATURE CITED

- ABE, H., M. KANEHARA, T. TERADA, F. OHBAYASHI, T. SHIMADA *et al.*, 1998 Identification of novel random amplified polymorphic DNAs (RAPDs) on the W chromosome of the domesticated silkworm, *Bombyx mori*, and the wild silkworm, *B. mandarina*, and their retrotransposable element-related nucleotide sequences. *Genes Genet. Syst.* **73**: 243–254.
- ADAMS, I. R., and A. McLAREN, 2002 Sexually dimorphic development of mouse primordial germ cells: switching from oogenesis to spermatogenesis. *Development* **129**: 1155–1164.
- ALFAQIH, M. A., R. B. PHILLIPS, P. A. WHEELER and G. H. THORGAARD, 2008 The cutthroat trout Y chromosome is conserved with that of rainbow trout. *Cytogenet. Genome Res.* **121**: 255–259.
- ARKHIPCHUK, V. V., 1995 Role of chromosomal and genome mutations in the evolution of bony fishes. *Hydrobiol. J.* **31**: 55–65.
- ASHMAN, T. L., 2003 Constraints on the evolution of males and sexual dimorphism: field estimates of genetic architecture of reproductive traits in three populations of gynodioecious *Fragaria virginiana*. *Evolution* **57**: 2012–2025.
- ASHMAN, T. L., 2005 The limits of sexual dimorphism in vegetative traits in a gynodioecious plant. *Am. Nat.* **166**: s5–s16.
- BACHTROG, D. and B. CHARLESWORTH, 2002 Reduced adaptation of a non-recombining neo-Y chromosome. *Nature* **416**: 323–326.
- BACKSTRÖM, N., N. KARAIKOU, E. H. LEDER, L. GUSTAFSSON, C. R. PRIMMER *et al.*, 2008 A gene-based genetic linkage map of the collared flycatcher (*Ficedula albicollis*) reveals extensive synteny and gene-order conservation during 100 million years of avian evolution. *Genetics* **179**: 1479–1495.
- BADYAEV, A. V., 2002 Growing apart: an ontogenetic perspective on the evolution of sexual size dimorphism. *Trends Ecol. Evol.* **17**: 369–378.
- BAKLOUSHINSKAYA, I., 2009 Evolution of sex determination in mammals. *Biol. Bull.* **36**: 167–174.
- BARLOW, B. A., and D. WIENS, 1976 Translocation heterozygosity and sex ratio in *Viscum fischeri*. *Heredity* **37**: 27–40.
- BAROILLER, J. F., H. D’COTTA, E. BEZAULT, S. WESSELS and G. HOERSTGEN-SCHWARK, 2009 Tilapia sex determination: where temperature and genetics meet. *Comp. Biochem. Physiol. Part A* **153**: 30–38.
- BARTKOWIAK, E., 1971 Mechanisms of sex determination in *Rumex hastatulus* Baldw. *Theor. Appl. Genet.* **41**: 320–326.
- BARTON, N. H., and B. CHARLESWORTH, 1998 Why sex and recombination? *Science* **281**: 1986–1990.
- BEARDSMORE, J. A., G. C. MAIR and R. I. LEWIS, 2001 Monosex male production in finfish as exemplified by tilapia: applications, problems and prospects. *Aquaculture* **197**: 282–301.
- BELLOTT, D., H. SKALETSKY, T. PYNTIKOVA, E. MARDIS, T. GRAVES *et al.*, 2010 Convergent evolution of chicken Z and human X chromosomes by expansion and gene acquisition. *Nature* **466**: 612–616.
- BENATTI, T. R., F. H. VALICENTE, R. AGGARWAL, C. ZHAO, J. G. WALLING *et al.*, 2009 A neo-sex-chromosome that drives post-zygotic sex determination in the hessian fly (*Mayetiola destructor*). *Genetics* **184**: 769–777.
- BERGERO, R., A. FORREST, E. KAMAU and D. CHARLESWORTH, 2007 Evolutionary strata on the X chromosomes of the dioecious

- cious plant *Silene latifolia*: evidence from new sex-linked genes. *Genetics* **175**: 1945–1954.
- BERSET-BRÄNDLI, L., J. JAQUIÉRY, S. DUBÉY and N. PERRIN, 2006 A sex-specific marker reveals male heterogamety in European tree frogs. *Mol. Biol. Evol.* **23**: 1104–1106.
- BERSET-BRÄNDLI, L., J. JAQUIÉRY, T. BROQUET, Y. ULRICH and N. PERRIN, 2008 Extreme heterochiasmy and nascent sex chromosomes in European tree frogs. *Proc. R. Soc. Lond. Ser. B* **275**: 1577–1585.
- BULL, J. J., 1983 *Evolution of Sex Determining Mechanisms*. Benjamin-Cummings, Menlo Park, CA.
- CARVALHO, A. B., and A. G. CLARK, 2005 Y chromosome of *D. pseudoobscura* is not homologous to the ancestral *Drosophila* Y. *Science* **307**: 108–110.
- CHARLESWORTH, B., 1991 The evolution of sex chromosomes. *Science* **251**: 1030–1033.
- CHARLESWORTH, B., 1996 The evolution of chromosomal sex determination and dosage compensation. *Curr. Biol.* **6**: 149–162.
- CHARLESWORTH, B., and D. CHARLESWORTH, 1978 A model for the evolution of dioecy and gynodioecy. *Am. Nat.* **112**: 975–997.
- CHARLESWORTH, B., and J. D. WALL, 1998 Inbreeding, heterozygote advantage and the evolution of neo-X and neo-Y sex chromosomes. *Proc. R. Soc. Lond. Ser. B* **266**: 51–56.
- CHARLESWORTH, B., J. A. COYNE and N. H. BARTON, 1987 The relative rates of evolution of sex chromosomes and autosomes. *Am. Nat.* **130**: 113–146.
- CHARLESWORTH, D., B. CHARLESWORTH and G. MARAIS, 2005 Steps in the evolution of heteromorphic sex chromosomes. *Heredity* **95**: 118–128.
- CHASE, C., 2007 Cytoplasmic male sterility: a window to the world of plant mitochondrial-nuclear interactions. *Trends Genet.* **23**: 81–90.
- CHEN, C. X., Q. Y. YU, S. B. HOU, Y. J. LI, M. EUSTICE *et al.*, 2007b Construction of a sequence-tagged high-density genetic map of papaya for comparative structural and evolutionary genomics in brassicales. *Genetics* **177**: 2481–2491.
- CHEN, S. L., J. LI, S. P. DENG, Y. S. TIAN, Q. Y. WANG *et al.*, 2007a Isolation of female-specific AFLP markers and molecular identification of genetic sex in half-smooth tongue sole (*Cynoglossus semilaevis*). *Mar. Biotechnol.* **9**: 273–280.
- CHEN, Y. Q., Y. W. DONG, X. J. XIANG, X. R. ZHANG and B. C. ZHU, 2008 Sex determination of *Microtus mandarinus mandarinus* is independent of Sry gene. *Mamm. Genome* **19**: 61–68.
- CHO, S., Z. HUANG and J. ZHANG, 2007 Sex-specific splicing of the honeybee doublesex gene reveals 300 million years of evolution at the bottom of the insect sex-determination pathway. *Genetics* **177**: 1733–1741.
- CHRISTOFFELS, A., E. G. L. KOH, J.-M. CHIA, S. BRENNER, S. APARICIO *et al.*, 2004 Fugu genome analysis provides evidence for a whole-genome duplication early during the evolution of ray-finned fishes. *Mol. Biol. Evol.* **21**: 1146–1151.
- CHU, J. M., and D. J. HOWARD, 1998 Genetic linkage maps of the ground crickets *Allonemobius fasciatus* and *Allonemobius socius* using RAPD and allozyme markers. *Genome* **41**: 841–847.
- CNAANI, A., and T. D. KOCHER, 2008 Sex-linked markers and microsatellite locus duplication in the cichlid species *Oreochromis tanganyicae*. *Biol. Lett.* **4**: 700–703.
- CNAANI, A., B. Y. LEE, N. ZILBERMAN, C. OZOUF-COSTAZ, G. HULATA *et al.*, 2008 Genetics of sex determination in tilapiine species. *Sex. Dev.* **2**: 43–54.
- COIMBRA, M. R. M., K. KOBAYASHI, S. KORETSUGU, O. HASEGAWA, E. OHARA *et al.*, 2003 A genetic linkage map of the Japanese flounder, *Paralichthys olivaceus*. *Aquaculture* **220**: 203–218.
- CONOVER, D. O., and B. E. KYNARD, 1981 Environmental sex determination: interaction of temperature and genotype in a fish. *Science* **213**: 577–579.
- CORRENS, C., 1928 Bestimmung, Vererbung und Verteilung des Geschlechtes bei den höheren Pflanzen (Determination, inheritance and distribution of the sexes in the higher plants). *Handbuch der Vererbungswissenschaft (Handbook of Genetics)* **2**: 1–138.
- CRISCIONE, C. D., C. L. L. VALENTIM, H. HIRAI, P. T. LOVERDE and T. J. C. ANDERSON, 2009 Genomic linkage map of the human blood fluke *Schistosoma mansoni*. *Genome Biol.* **10**: R71.
- DAWSON, D. A., M. ÅKESSON, T. BURKE, J. M. PEMBERTON, J. SLATE *et al.*, 2007 Gene order and recombination rate in homologous chromosome regions of the chicken and a passerine bird. *Mol. Biol. Evol.* **24**: 1537–1552.
- DAWSON, T. E., and M. A. GEBER, 1998 Dimorphism in physiology and morphology, pp. 175–215 in *Sexual Dimorphism in Flowering Plants*, edited by M. A. GEBER, T. E. DAWSON and L. F. DELPH. Springer-Verlag, Berlin.
- DELGADO, C., P. D. WATERS, C. GILBERT and J. A. M. GRAVES, 2009 Physical mapping of the elephant X chromosome: conservation of gene order over 105 million years. *Chromosome Res.* **17**: 917–926.
- DESFEUX, C., S. MAURICE, J. P. HENRY, B. LEJEUNE and P. H. GOUYON, 1996 Evolution of reproductive systems in the genus *Silene*. *Proc. R. Soc. Lond. Ser. B* **263**: 409–414.
- DEVLIN, R. H., and Y. NAGAHAMA, 2002 Sex determination and sex differentiation in fish: an overview of genetic, physiological, and environmental influences. *Aquaculture* **208**: 191–364.
- DORKEN, M. E., and S. C. G. BARRETT, 2004 Sex determination and the evolution of dioecy from monoecy in *Sagittaria latifolia* (Alismataceae). *Proc. R. Soc. Lond. Ser. B* **271**: 213–219.
- DORKEN, M. E., and J. R. PANNELL, 2008 Density-dependent regulation of sex ratio in an annual plant. *Am. Nat.* **171**: 824–830.
- DRILLING, C. C., and M. S. GROBER, 2005 An initial description of alternative male reproductive phenotypes in the bluebanded goby, *Lythrypnus dalli* (Teleostei, Gobiidae). *Environ. Biol. Fish.* **72**: 361–372.
- EGGERT, C., 2004 Sex determination: the amphibian models. *Reprod. Nutr. Dev.* **44**: 539–549.
- EPPLEY, S. M., and E. H. WENK, 2001 Reproductive biomass allocation in the dioecious perennial *Acanthosicyos horrida*. *S. Afr. J. Bot.* **67**: 10–14.
- EZAZ, T., A. E. QUINN, I. MIURA, S. D. SARRE, A. GEORGES *et al.*, 2005 The dragon lizard *Pogona vitticeps* has ZZ/ZW micro-sex chromosomes. *Chromosome Res.* **13**: 763–776.
- EZAZ, T., A. E. QUINN, S. D. SARRE, S. O'MEALLY, A. GEORGES *et al.*, 2009 Molecular marker suggests rapid changes of sex-determining mechanisms in Australian dragon lizards. *Chromosome Res.* **17**: 91–98.
- FERGUSON-SMITH, M., 2007 The evolution of sex chromosomes and sex determination in vertebrates and the key role of DMRT1. *Sex. Dev.* **1**: 2–11.
- FERRIS, P. J., E. V. ARMBRUST and U. GOODENOUGH, 2002 Genetic structure of the mating-type locus of *Chlamydomonas reinhardtii*. *Genetics* **160**: 181–200.
- FISHER, R. A., 1931 The evolution of dominance. *Biol. Rev.* **6**: 345–368.
- FISHMAN, L., and J. H. WILLIS, 2006 A cytonuclear incompatibility causes anther sterility in *Mimulus* hybrids. *Evolution* **60**: 1372–1381.
- FORMSUH, E. S., J. H. HATCHETT, W. C. BLACK and J. J. STUART, 1996 Sex-linked inheritance of virulence against wheat resistance gene H9 in the Hessian fly (Diptera: Cecidomyiidae). *Ann. Entomol. Soc. Am.* **89**: 428–434.
- FRASER, J. A., S. DIEZMANN, R. L. SUBARAN, A. ALLEN, K. B. LENGELER *et al.*, 2004 Convergent evolution of chromosomal sex-determining regions in the animal and fungal kingdoms. *PLoS Biol.* **2**: 2243–2255.
- FRASER, L. G., G. K. TSANG, P. M. DATSON, H. N. DE SILVA, C. F. HARVEY *et al.*, 2009 A gene-rich linkage map in the dioecious species *Actinidia chinensis* (kiwifruit) reveals putative X/Y sex-determining chromosomes. *BMC Genomics* **10**: 102.
- GADAU, J., C. U. GERLOFF, N. KRUGER, H. CHAN, P. SCHMID-HEMPEL *et al.*, 2001 A linkage analysis of sex determination in *Bombus terrestris* (L.) (Hymenoptera: Apidae). *Heredity* **87**: 234–242.
- GEMPE, T., M. HASSELMANN, M. SCHIÖTT, G. HAUSE, M. OTTE *et al.*, 2009 Sex determination in honeybees: two separate mechanisms induce and maintain the female pathway. *PLoS Biol.* **7**: e1000222.
- GHARBI, K., A. GAUTIER, R. G. DANZMANN, S. GHARBI, T. SAKAMOTO *et al.*, 2006 A linkage map for brown trout (*Salmo trutta*): chromosome homologies and comparative genome organization with other salmonid fish. *Genetics* **172**: 2405–2419.
- GLADDEN, J., B. FARBOUD and B. MEYER, 2007 Revisiting the X: a signal that specifies *Caenorhabditis elegans* sexual fate. *Genetics* **77**: 1639–1654.
- GLAWE, G. A., and T. J. D. JONG, 2009 Complex sex determination in the stinging nettle *Urtica dioica*. *Evol. Ecol.* **23**: 635–649.
- GRAHAM, P., J. PENN and P. SCHEDL, 2003 Masters change, slaves remain. *Bioessays* **25**: 1–4.
- GRAVES, J., and C. PEICHEL, 2010 Are homologies in vertebrate sex determination due to shared ancestry or to limited options? *Genome Biol.* **11**: 205.

- GUTTMAN, D. S., and D. CHARLESWORTH, 1998 An X-linked gene with a degenerate Y-linked homologue in a dioecious plant. *Nature* **393**: 263–266.
- HAAG, E. S., 2005 The evolution of nematode sex determination: *C. elegans* as a reference point for comparative biology, in *WormBook*, edited by THE C. ELEGANS RESEARCH COMMUNITY. http://www.wormbook.org/chapters/www_evolutionsexdetermin/evolutionsexdetermin.html
- HASSELMANN, M., T. GEMPE, M. SCHIÖTT, C. NUNES-SILVA, M. OTTE *et al.*, 2008a Evidence for the evolutionary nascence of a novel sex determination pathway in honey bees. *Nature* **454**: 519–522.
- HASSELMANN, M., X. VEKEMANS, J. PFLUGFELDER, N. KOENIGER, G. KOENIGER *et al.*, 2008b Evidence for convergent nucleotide evolution and high allelic turnover rates at the complementary sex determiner gene of Western and Asian honeybees. *Mol. Biol. Evol.* **25**: 696–708.
- HAWTHORNE, D. J., 2001 AFLP-based genetic linkage map of the Colorado potato beetle *Leptinotarsa decemlineata*: sex chromosomes and a pyrethroid-resistance candidate gene. *Genetics* **158**: 695–700.
- HEDIGER, M., C. HENGGELER, N. MEIER, R. PEREZ, G. SACCONI *et al.*, 2010 Molecular characterization of the key switch provides a basis for understanding the rapid divergence of the sex-determining pathway of the housefly. *Genetics* **184**: 155–170.
- HEDRICK, P. W., 2007 Sex: differences in mutation, recombination, selection, gene flow, and genetic drift. *Evolution* **61**: 2750–2771.
- HILLIS, D. M., and D. M. GREEN, 1990 Evolutionary changes of heterogametic sex in the phylogenetic history of amphibians. *J. Evol. Biol.* **3**: 49–64.
- HOLLOWAY, A. K., M. R. STRAND, W. C. BLACK and M. F. ANTOLIN, 2000 Linkage analysis of sex determination in *Bracon* sp near hebetor (Hymenoptera: Braconidae). *Genetics* **154**: 205–212.
- HOWELL, E. C., S. ARMSTRONG and D. FILATOV, 2009 Evolution of neo-sex chromosomes in *Silene diclinis*. *Genetics* **182**: 1109–1115.
- HUNT, G. J., and R. E. PAGE, 1994 Linkage analysis of sex determination in the honey bee (*Apis mellifera*). *Mol. Gen. Genet.* **244**: 512–518.
- HUXLEY, J., 1928 Sexual differences in linkage in *Gammarus chevruxi*. *J. Genet.* **20**: 145–156.
- JANZEN, F. J., and P. C. PHILLIPS, 2006 Exploring the evolution of environmental sex determination, especially in reptiles. *J. Evol. Biol.* **19**: 1775–1784.
- JOHNSON-BROUSSEAU, S. A., and S. McCORMICK, 2004 A compendium of methods useful for characterizing *Arabidopsis* pollen mutants and gametophytically-expressed genes. *Plant J.* **39**: 761–775.
- JUST, W., W. RAU, W. VOGEL, M. AKHVERDIAN, K. FREDGA *et al.*, 1995 Absence of SRY in species of the vole *Ellobius*. *Nat. Genet.* **11**: 117–118.
- KALLMAN, K. D., 1970 Sex determination and the restriction of sex-linked pigment patterns to the X and Y chromosomes of a Poeciliid fish, *Xiphophorus maculatus*, from the Belize and Sibun rivers of British Honduras. *Zoologica* **55**: 1–16.
- KALLMAN, K. D., 1984 A new look at sex determination in poeciliid fishes, pp. 95–171 in *Genetics of Fishes*, edited by B. J. TURNER. Plenum Publishing, New York.
- KAWAI, A., C. NISHIDA-UMEHARA, J. ISHIJIMA, Y. TSUDA, H. OTA *et al.*, 2007 Different origins of bird and reptile sex chromosomes inferred from comparative mapping of chicken Z-linked genes. *Cytogenet. Genome Res.* **117**: 92–102.
- KHATTAK, J. Z. K., A. M. TORP and S. B. ANDERSEN, 2006 A genetic linkage map of *Spinacia oleracea* and localization of a sex determination locus. *Euphytica* **148**: 311–318.
- KIHARA, H., and J. HIRAYOSHI, 1932 Die Geschlechtschromosomen von *Humulus japonicus* Sieb. et Zucc (Sex determination in *Humulus japonicus* Sieb. et Zucc), pp. 248 in *8th Congress of the Japanese Association for the Advancement of Science, Plant Breeding Abstracts*.
- KIKUCHI, K., W. KAI, A. HOSOKAWA, N. MIZUNO, H. SUETAKE *et al.*, 2007 The sex-determining locus in the Tiger Pufferfish, *Takifugu rubripes*. *Genetics* **175**: 2039–2042.
- KIM, S., C. KIM, J. LEE and J. BANG, 2008 Karyotype analysis and physical mapping using two rRNA genes in dioecious plant, *Humulus japonicus* Siebold and Zucc. *Genes Genomics* **30**: 157–161.
- KIMURA, T., K. YOSHIDA, A. SHIMADA, T. JINDO, H. M. M. SAKAZUMI *et al.*, 2006 Genetic linkage map of medaka with polymerase chain reaction length polymorphisms. *Gene* **363**: 24–31.
- KITANO, J., J. A. ROSS, S. MORI, M. KUME, F. C. JONES *et al.*, 2009 A role for a neo-sex chromosome in stickleback speciation. *Nature* **461**: 1079–1083.
- KOERICH, L. B., X. Y. WANG, A. G. CLARK and A. B. CARVALHO, 2008 Low conservation of gene content in the *Drosophila* Y chromosome. *Nature* **456**: 949–951.
- KONDO, M., E. NAGAO, H. MITANI and A. SHIMA, 2001 Differences in recombination frequencies during male and female meioses of the sex chromosomes of the medaka, *Orzias latipes*. *Genet. Res.* **78**: 23–30.
- KONDO, M., I. NANDO, U. HORNUNG, M. SCHMID and M. SCHARTL, 2004 Evolutionary origin of the medaka Y chromosome. *Curr. Biol.* **14**: 1664–1669.
- KONDO, M., U. HORNUNG, I. NANDA, S. IMAI, T. SASAKI *et al.*, 2006 Genomic organization of the sex-determining and adjacent regions of the sex chromosomes of medaka. *Genome Res.* **16**: 815–826.
- KOPP, A., R. M. GRAZE, S. Z. XU, S. B. CARROLL and S. V. NUZHIDIN, 2003 Quantitative trait loci responsible for variation in sexually dimorphic traits in *Drosophila melanogaster*. *Genetics* **163**: 771–787.
- KOZIELSKA, M., F. WEISSING, L. W. BEUKEBOOM and I. PEN, 2010 Segregation distortion and the evolution of sex determining mechanisms. *Heredity* **104**: 100–112.
- KRZYWINSKI, J., D. R. NUSSKERN, M. K. KERN and N. J. BESANSKY, 2004 Isolation and characterization of Y chromosome sequences from the African malaria mosquito *Anopheles gambiae*. *Genetics* **166**: 1291–1302.
- KUROIWA, A., 2009 No final answers yet on sex determination in birds. *Nature* **462**: 34.
- LAHN, B.T., and D.C. PAGE, 1999 Four evolutionary strata on the human X chromosome. *Science* **286**: 964–967.
- LARRACUENTE, A. M., M. A. NOOR and A. G. CLARK, 2010 Translocation of Y-linked genes to the dot chromosome in *Drosophila pseudoobscura*. *Mol. Biol. Evol.* **27**: 1612–1620.
- LEE, B. Y., D. J. PENMAN and T. D. KOCHER, 2003 Identification of a sex-determining region in Nile tilapia (*Oreochromis niloticus*) using bulked segregant analysis. *Anim. Genet.* **34**: 379–383.
- LEE, B. Y., G. HULATA and T. D. KOCHER, 2004 Two unlinked loci controlling the sex of blue tilapia (*Oreochromis aureus*). *Heredity* **92**: 543–549.
- LEMO, B., L. O. ARARIPE, P. FONTANILLAS and D. L. HARTL, 2008 Dominance and the evolutionary accumulation of cis- and trans-effects on gene expression. *Proc. Natl. Acad. Sci. USA* **105**: 14471–14476.
- LI, Y. T., K. BYRNE, E. MIGGIANO, V. WHAN, S. MOORE *et al.*, 2003 Genetic mapping of the kuruma prawn *Penaeus japonicus* using AFLP markers. *Aquaculture* **219**: 143–156.
- LIU, X. D., X. LIU, X. M. GUO, Q. K. GAO, H. G. ZHAO *et al.*, 2006 A preliminary genetic linkage map of the pacific abalone *Haliotis discus hannai* Ino. *Mar. Biotechnol.* **8**: 386–397.
- LIU, Z., P. H. MOORE, H. MA, C. M. ACKERMAN, M. RAGIBA *et al.*, 2004 A primitive Y chromosome in Papaya marks the beginning of sex chromosome evolution. *Nature* **427**: 348–352.
- LLOYD, D. G., 1975 Breeding systems in *Cotula*. III. Dioecious populations. *New Phytol.* **74**: 109–123.
- LUYCX, P., 1981 A sex-linked esterase locus and translocation heterozygosity in a termite. *Heredity* **46**: 315–320.
- MA, H., P. H. MOORE, Z. Y. LIU, M. S. KIM, Q. Y. YU *et al.*, 2004 High-density linkage mapping revealed suppression of recombination at the sex determination locus in papaya. *Genetics* **166**: 419–436.
- MABBERLEY, D., 1997 *The Plant Book*. Cambridge University Press, Cambridge, UK.
- MACINTYRE, P., 1961 Spontaneous sex reversals of genotypic males in the Platyfish (*Xiphophorus maculatus*). *Genetics* **46**: 575–580.
- MACKNIGHT, R.H., 1939 The sex-determining mechanism of *Drosophila miranda*. *Genetics* **24**: 180–201.
- MAINGUY, J., S. D. COTE, M. FESTA-BIANCHET and D. W. COLTMAN, 2009 Father-offspring phenotypic correlations suggest intralocus sexual conflict for a fitness-linked trait in a wild sexually dimorphic mammal. *Proc. R. Soc. Lond. Ser. B* **276**: 4067–4075.
- MANK, J. E., 2009a Sex chromosomes and the evolution of sexual dimorphism: lessons from the genome. *Am. Nat.* **173**: 141–150.
- MANK, J. E., 2009b The evolution of heterochiasmy: the role of sexual selection and sperm competition in determining sex-specific recombination rates in eutherian mammals. *Genet. Res.* **91**: 355–363.

- MANK, J. E., and J. C. AVISE, 2006 Phylogenetic conservation of chromosome numbers in actinopterygian fishes. *Genetica* **127**: 321–327.
- MANK, J. E., and H. ELLEGREN, 2007 Parallel divergence and degeneration of the avian W sex chromosome. *Trends Ecol. Evol.* **22**: 389–391.
- MANK, J. E., D. E. L. PROMISLOW and J. C. AVISE, 2005 Phylogenetic perspectives on the evolution of parental care in ray-finned fishes. *Evolution* **59**: 1570–1578.
- MANK, J. E., D. E. L. PROMISLOW and J. C. AVISE, 2006 Evolution of alternative sex-determining mechanisms in teleost fishes. *Biol. J. Linn. Soc.* **87**: 83–93.
- MARAIS, G., M. NICOLAS, R. BERGERO, P. CHAMBRIER, E. KEJNOVSKY *et al.*, 2008 Evidence for degeneration of the Y chromosome in the dioecious plant *Silene latifolia*. *Curr. Biol.* **18**: 545–549.
- MARGUERIT, E., C. BOURY, A. MANICKI, M. DONNART, G. BUTTERLIN *et al.*, 2009 Genetic dissection of sex determinism, inflorescence morphology and downy mildew resistance in grapevine. *Theor. Appl. Genet.* **118**: 1261–1278.
- MARIN, J., and B. S. BAKER, 1998 The evolutionary dynamics of sex determination. *Science* **281**: 1990–1994.
- MARTI, D., and C. BIDAU, 1995 Male and female meiosis in a natural population of *Dichroplus pratensis* (Acrididae) polymorphic for Robertsonian translocations: a study of chiasma frequency and distribution. *Hereditas* **123**: 227–235.
- MARTIN, A., A. B. C. TROADEC, M. RAJAB, R. FERNANDEZ, H. MORIN *et al.*, 2009 A transposon-induced epigenetic change leads to sex determination in melon. *Nature* **461**: 1135–1138.
- MARTINEZ, P., C. BOUZA, M. HERMIDA, J. FERNANDEZ, M. A. TORO *et al.*, 2009 Identification of the major sex-determining region of turbot (*Scophthalmus maximus*). *Genetics* **183**: 1443–1452.
- MATSUBARA, K., H. TARUI, M. TORIBA, K. YAMADA, C. NISHIDA-UMEHARA *et al.*, 2006 Evidence for different origin of sex chromosomes in snakes, birds, and mammals and step-wise differentiation of snake sex chromosomes. *Proc. Natl. Acad. Sci. USA* **103**: 18190–18195.
- MATSUDA, M., Y. NAGAHAMA, A. SHINOMIYA, T. SATO, C. MATSUDA *et al.*, 2002 DMY is a Y-specific DM-domain gene required for male development in the medaka fish. *Nature* **417**: 559–563.
- MCALLISTER, B. F., and B. CHARLESWORTH, 1999 Reduced sequence variability on the neo-Y chromosome of *Drosophila americana americana*. *Genetics* **153**: 221–233.
- MCCLELLAND, E. K., and K. A. NAISH, 2008 A genetic linkage map for coho salmon (*Oncorhynchus kisutch*). *Anim. Genet.* **39**: 169–179.
- MCDANIEL, S. F., J. H. WILLIS and A. J. SHAW, 2007 A linkage map reveals a complex basis for segregation distortion in an interpopulation cross in the moss *Ceratodon purpureus*. *Genetics* **176**: 2489–2500.
- MEYER, A., and M. SCHARTL, 1999 Gene and genome duplications in vertebrates: the one-to-four (-to-eight in fish) rule and the evolution of novel gene functions. *Curr. Opin. Cell Biol.* **11**: 699–704.
- MORIZOT, D. C., S. A. SLAUGENHAUPT, K. D. KALLMAN and A. CHAKRAVARTI, 1991 Genetic linkage map of fishes of the genus *Xiphophorus* (Teleostei, Poeciliidae). *Genetics* **127**: 399–410.
- MORIZOT, D. C., R. S. NAIRN, P. SIMHAMBHATLA, L. DELLA COLETTA, D. TRONO *et al.*, 2001 *Xiphophorus* genetic linkage map: beginnings of comparative gene mapping in fishes. *Mar. Biotechnol.* **3**: S153–S161.
- MORROW, E. H., A. D. STEWART and W. R. RICE, 2008 Assessing the extent of genome-wide intralocus sexual conflict via experimentally enforced gender-limited selection. *J. Evol. Biol.* **21**: 1046–1054.
- MIURA, I., H. OHTANI, M. NAKAMURA, Y. ICHIKAWA and K. SAITOH, 1998 The origin and differentiation of the heteromorphic sex chromosomes Z, W, X, and Y in the frog *Rana rugosa*, inferred from the sequences of a sex-linked gene, ADP/ATP translocase. *Mol. Biol. Evol.* **15**: 1612–1619.
- MRACKOVA, M., M. NICOLAS, R. HOBZA, I. NEGRUTIU, F. MONÉGER *et al.*, 2008 Independent origin of sex chromosomes in two species of the genus *Silene*. *Genetics* **179**: 1129–1133.
- MUELLER, J. L., S. K. MAHADEVAIAH, P. J. PARK, P. E. WARBURTON, D. C. PAGE *et al.*, 2008 The mouse X chromosome is enriched for multicopy testis genes showing postmeiotic expression. *Nat. Genet.* **40**: 794–799.
- MURPHY, W. J., S. SUN, Z.-Q. CHEN, J. PECON-SLATTERY and S. J. O'BRIEN, 1999 Extensive conservation of sex chromosome organization between cat and human revealed by parallel radiation hybrid mapping. *Genome Res.* **9**: 1223–1230.
- NAGAI, T., Y. TAKEHANA, S. HAMAGUCHI and M. SAKAIZUMI, 2008 Identification of the sex-determining locus in the Thai medaka, *Oryzias latipes*. *Cytogenet. Genome Res.* **121**: 137–142.
- NAM, K., and H. ELLEGREN, 2008 The chicken (*Gallus gallus*) Z chromosome contains at least three nonlinear evolutionary strata. *Genetics* **180**: 1131–1136.
- NANDA, I., M. KONDO, U. HORNING, S. ASAKAWA, C. WINKLER *et al.*, 2002 A duplicated copy of DMRT1 in the sex-determining region of the Y chromosome of the medaka, *Oryzias latipes*. *Proc. Natl. Acad. Sci. USA* **99**: 11778–11783.
- NANDA, I., K. SCHLEGELMILCH, T. HAAF, M. SCHARTL and M. SCHMID, 2008 Synteny conservation of the Z chromosome in 14 avian species (11 families) supports a role for Z dosage in avian sex determination. *Cytogenet. Genome Res.* **122**: 150–156.
- NARUSE, K., S. FUKAMACHI, H. MITANI, M. KONDO, T. MATSUOKA *et al.*, 2000 A detailed linkage map of Medaka, *Oryzias latipes*, comparative genomics and genome evolution. *Genetics* **154**: 1773–1784.
- NARUSE, K., M. TANAKA, K. MITA, A. SHIMA, J. POSTLETHWAIT *et al.*, 2004 A medaka gene map: the trace of ancestral vertebrate proto-chromosomes revealed by comparative gene mapping. *Genome Res.* **14**: 820–828.
- NAVAJAS-PEREZ, R., R. DE LA HERRAN, G. L. GONZALEZ, M. JAMILENA, R. LOZANO *et al.*, 2005 The evolution of reproductive systems and sex-determining mechanisms within *Rumex* (Polygonaceae) inferred from nuclear and chloroplastial sequence data. *Mol. Biol. Evol.* **22**: 1929–1939.
- NENE, V., J. R. WORTMAN, D. LAWSON, B. HAAS, C. KODIRA *et al.*, 2007 Genome sequence of *Aedes aegypti*, a major arbovirus vector. *Science* **316**: 1718–1723.
- NICHOLS, K. M., W. P. YOUNG, R. G. DANZMANN, B. D. ROBISON, C. REXROAD *et al.*, 2003 A consolidated linkage map for rainbow trout (*Oncorhynchus mykiss*). *Anim. Genet.* **34**: 102–115.
- NISHIDA-UMEHARA, C., Y. TSUDA, J. A. J. ISHIJIMA, A. FUJIWARA, Y. MATSUDA *et al.*, 2007 The molecular basis of chromosome orthologies and sex chromosomal differentiation in palaeognathous birds. *Chromosome Res.* **15**: 721–734.
- OGATA, M., Y. HASEGAWA, H. OHTANI, M. MINEYAMA and I. MIURA, 2008 The ZZ/ZW sex-determining mechanism originated independently during the evolution of the frog, *Rana rugosa*. *Heredity* **100**: 92–99.
- OHNISHI, O., 1985 Population genetics of cultivated buckwheat, *Fagopyrum esculentum* Moench. III. Frequency of sterility mutants in Japanese populations. *Jpn. J. Genet.* **60**: 391–404.
- OKADA, S., T. SONE, M. FUJISAWA, S. NAKAYAMA, M. TAKENAKA *et al.*, 2001 The Y chromosome in the liverwort *Marchantia polymorpha* has accumulated unique repeat sequences harboring a male-specific gene. *Proc. Natl. Acad. Sci. USA* **98**: 9454–9459.
- OLMO, E., 2005 Rate of chromosome changes and speciation in reptiles. *Genetica* **125**: 185–203.
- ORGAN, C. L., and D. E. JANES, 2008 Evolution of sex chromosomes in Sauroptiles. *Integr. Comp. Biol.* **48**: 512–519.
- ORGAN, C. L., D. E. JANES, A. MEADE and M. PAGEL, 2009 Genotypic sex determination enabled adaptive radiation of extinct marine reptiles. *Nature* **461**: 389–392.
- OTTO, S. P., 2009 The evolutionary enigma of sex. *Am. Nat.* **174**: S1–S14.
- OTTO, S. P., and N. H. BARTON, 1997 The evolution of recombination: removing the limits to natural selection. *Genetics* **147**: 879–906.
- PANE, A., A. D. SIMONE, G. SACCONI and C. POLITO, 2005 Evolutionary conservation of *Ceratitidis capitata* transformer gene function. *Genetics* **171**: 615–624.
- PARISE-MALTEMPI, P., C. MARTINS, C. OLIVEIRA and F. FORESTI, 2007 Identification of a new repetitive element in the sex chromosomes of *Leporinus elongatus* (Teleostei: Characiformes: Anostomidae): new insights into the sex chromosomes of Leporini. *Cytogenet. Genome Res.* **116**: 218–223.
- PATTEN, M. M., and D. HAIG, 2009 Maintenance or loss of genetic variation under sexual and parental antagonism at a sex-linked locus. *Evolution* **63**: 2888–2895.
- PEICHEL, C. L., K. S. NERENG, K. A. OHGI, B. L. E. COLE, P. F. COLOSIMO *et al.*, 2001 The genetic architecture of divergence between threespine stickleback species. *Nature* **414**: 901–905.
- PEICHEL, C. L., J. A. ROSS, C. K. MATSON, M. DICKSON, J. GRIMWOOD *et al.*, 2004 The master sex-determination locus in threespine sticklebacks is on a nascent Y chromosome. *Curr. Biol.* **14**: 1416–1424.

- PEIFFER, J., S. KAUSHIK, H. SAKAI, M. ARTEAGA-VAZQUEZ, N. SANCHEZ-LEON *et al.*, 2008 A spatial dissection of the Arabidopsis floral transcriptome by MPSS. *BMC Plant Biol.* **8**: 43.
- PEIL, A., H. FLACHOWSKY, E. SCHUMANN and W. E. WEBER, 2003 Sex-linked AFLP markers indicate a pseudoautosomal region in hemp (*Cannabis sativa* L.). *Theor. Appl. Genet.* **107**: 102–109.
- PERRIN, N., 2009 Sex reversal: a fountain of youth for sex chromosomes? *Evolution* **63**: 3043–3049.
- PHILLIPS, R., J. DEKONING, A. VENTURA, K. NICHOLS, R. DREW *et al.*, 2009 Recombination is suppressed over a large region of the rainbow trout Y chromosome. *Anim. Genet.* **40**: 925–932.
- PINYOPICH, A., G. S. DITTA, B. SAVIDGE, S. J. LILJEGREN, E. BAUMANN *et al.*, 2003 Assessing the redundancy of MADS-box genes during carpel and ovule development. *Nature* **424**: 85–88.
- POKORNA, M., and L. KRATOCHVIL, 2009 Phylogeny of sex-determining mechanisms in squamate reptiles: Are sex chromosomes an evolutionary trap? *Zool. J. Linn. Soc.* **156**: 168–183.
- POLLEY, A., E. SEIGNER and M. W. GANAL, 1997 Identification of sex in hop (*Humulus lupulus*) using molecular markers. *Genome* **40**: 357–361.
- POTRZEBOWSKI, L., N. VINCKENBOSCH, A. C. MARQUES, F. CHALMEL, B. JEGOU *et al.*, 2008 Chromosomal gene movements reflect the recent origin and biology of the therian sex chromosomes. *PLoS Biol.* **6**: e80.
- POTRZEBOWSKI, L., N. VINCKENBOSCH and H. KAESSMANN, 2009 The emergence of new genes on the young therian X. *Trends Genet.* **26**: 1–4.
- PRESGRAVES, D. C., and H. ORR, 1998 Haldane's rule in taxa lacking a hemizygous X. *Science* **282**: 952–954.
- QUINN, A. E., A. GEORGES, S. D. SARRE, F. GUARINO, T. EZAZ *et al.*, 2007 Temperature sex reversal implied sex gene dosage in a reptile. *Science* **316**: 411.
- QUINN, A. E., T. EZAZ, S. D. SARRE, J. A. MARSHALL GRAVES and A. GEORGES, 2010 Extension, single-locus conversion and physical mapping of sex chromosome sequences identify the Z microchromosome and pseudo-autosomal region in a dragon lizard, *Pogona vitticeps*. *Heredity* **104**: 410–417.
- RASMUSSEN, D., and M. NOOR, 2009 What can you do with 0.1x genome coverage? A case study based on a genome survey of the scuttle fly *Megaselia scalaris* (Phoridae). *BMC Genomics* **10**: 382.
- RAUDSEPP, T., E. LEE, S. KATA, C. BRINKMEYER, J. MICKELSON *et al.*, 2004 Exceptional conservation of horse-human gene order on X chromosome revealed by high-resolution radiation hybrid mapping. *Proc. Natl. Acad. Sci. USA* **101**: 2386–2391.
- RAYMOND, C. S., M. W. MURPHY, M. G. O'SULLIVAN, V. J. BARDWELL and D. ZARKOWER, 2000 DMRT1, a gene related to worm and fly sexual regulators, is required for mammalian testis differentiation. *Genes Dev.* **14**: 2587–2595.
- REAMON-BUTTNER, S. M., J. SCHONDELMAIER and C. JUNG, 1998 AFLP markers tightly linked to the sex locus in *Asparagus officinalis* L. *Mol. Breed.* **4**: 91–98.
- RENNER, S. S., and R. E. RICKLEFS, 1995 Dioecy and its correlates in the flowering plants. *Am. J. Bot.* **82**: 596–606.
- REXROAD, C. E., Y. PALTI, S. A. GAHR and R. L. VALLEJO, 2008 A second generation genetic map for rainbow trout (*Oncorhynchus mykiss*). *BMC Genet.* **9**: 74.
- RICE, W. R., 1984 Sex chromosomes and the evolution of sexual dimorphism. *Evolution* **38**: 735–742.
- RICE, W. R., 1987 Genetic hitchhiking and the evolution of reduced genetic activity of the human Y chromosome. *Genetics* **116**: 161–167.
- ROBERTS, R. B., J. R. SER and T. D. KOCHER, 2009 Sexual conflict resolved by invasion of a novel sex determiner in Lake Malawi cichlid fishes. *Science* **362**: 998–1001.
- ROSS, J. A., and C. L. PEICHEL, 2008 Molecular cytogenetic evidence of rearrangements on the Y chromosome of the threespine stickleback. *Genetics* **179**: 2173–2182.
- ROSS, J. A., J. R. URTON, J. BOLAND, M. D. SHAPIRO and C. L. PEICHEL, 2009 Turnover of sex chromosomes in the stickleback fishes (Gasterosteidae). *PLoS Genet.* **5**: e1000391.
- ROSS, M. T., D. V. GRAFHAM, A. J. COFFEY, S. SCHERER, K. MCLAY *et al.*, 2005 The DNA sequence of the human X chromosome. *Nature* **434**: 325–337.
- SAKAI, A. K., S. G. WELLER, W. WAGNER, M. NEPOKROEFF and T. M. CULLEY, 2006 Adaptive radiation and evolution of breeding systems in *Schiedea* (Caryophyllaceae), an endemic Hawaiian genus. *Ann. Mo. Bot. Gard.* **93**: 49–63.
- SCHULTHEIS, C., A. BOHNE, M. SCHARTL, J. N. VOLFF and D. GALIANA-ARNOUX, 2009 Sex determination diversity and sex chromosome evolution in poeciliid fish. *Sex. Dev.* **3**: 68–77.
- SEEFELDER, S., H. EHRMAIER, G. SCHWEIZER and E. SEIGNER, 2000 Male and female genetic linkage map of hops, *Humulus lupulus*. *Plant Breed.* **119**: 249–255.
- SEMERIKOV, V., U. LAGERCRANTZ, V. TSAROUHAS, A. RONNBERG-WASTLJUNG, C. ALSTROM-RAPAPORT *et al.*, 2003 Genetic mapping of sex-linked markers in *Salix viminalis* L. *Heredity* **91**: 293–299.
- SER, J. R., R. B. ROBERTS and T. D. KOCHER, 2010 Multiple interacting loci control sex determination in Lake Malawi cichlid fish. *Evolution* **64**: 486–501.
- SETIAMARGA, D. H. E., M. MIYA, Y. YAMANOE, Y. AZUMA, J. G. INOUE *et al.*, 2009 Divergence time of the two regional medaka populations in Japan as a new time scale for comparative vertebrate genomics. *Biol. Lett.* **5**: 812–816.
- SHAO, C. W., S. L. CHEN, C. F. SCHEURING, J. Y. XU, Z. H. SHAN *et al.*, 2010 Construction of two BAC libraries from half-smooth tongue sole *Cynoglossus semilaevis* and identification of clones containing candidate sex determining genes. *Mar. Biotechnol.* (in press) 10.1007/s10126-009-9242-x.
- SHAPIRO, M. D., B. R. SUMMERS, S. BALABHADRA, J. T. ALDENHOVEN, A. L. MILLER *et al.*, 2009 The genetic architecture of skeletal convergence and sex determination in ninespine sticklebacks. *Curr. Biol.* **19**: 1140–1145.
- SHEARMAN, D. C. A., 2002 The evolution of sex determination systems in Dipteran insects other than *Drosophila*. *Genetica* **116**: 25–43.
- SHINE, R., 1989 Ecological causes for the evolution of sexual dimorphism: a review of the evidence. *Quart. Rev. Biol.* **64**: 419–461.
- SIEGAL, M. L., and B. S. BAKER, 2005 Functional conservation and divergence of intersex, a gene required for female differentiation in *Drosophila melanogaster*. *Dev. Genes Evol.* **215**: 1–12.
- SIEGFRIED, K., and C. NUSSLEIN-VOLHARD, 2008 Germ line control of female sex determination in zebrafish. *Dev. Biol.* **324**: 277–287.
- SINGH, R. B., and B. W. SMITH, 1971 Mechanisms of sex determination in *Rumex acetosella*. *Theor. Appl. Genet.* **41**: 360.
- SINHA, S., A. GUHA, B. SINHA, R. KUMAR and N. BANERJEE, 2007 Average packing ratio and evolution of sex chromosomes in dioecious *Coccinia indica* and *Trichosanthes dioica*. *Cytologia* **72**: 369–372.
- SKALETSKY, H., T. KURODA-KAWAGUCHI, P. J. MINX, H. S. CORDUM, L. HILLIER *et al.*, 2003 The male-specific region of the human Y chromosome is a mosaic of discrete sequence classes. *Nature* **423**: 825–832.
- SMITH, B. W., 1963 The mechanism of sex determination in *Rumex hastatulus*. *Genetics* **48**: 1265–1288.
- SMITH, B. W., 1969 Evolution of sex-determining mechanisms in *Rumex*. *Chromosomes Today* **2**: 172–182.
- SMITH, C., 1975 The evolution of hermaphroditism in fishes, pp. 295–310 in *Intersexuality in the Animal Kingdom*, edited by R. REINBOTH. Springer-Verlag, Berlin.
- SMITH, C. A., P. J. MCCLIVE, P. S. WESTERN, K. J. REED and A. H. SINCLAIR, 1999 Evolution: conservation of a sex-determining gene. *Nature* **402**: 601–602.
- SMITH, C. A., K. N. ROESZLER, T. OHNESORG, D. M. CUMMINS, P. G. FARLIE *et al.*, 2009 The avian Z-linked gene DMRT1 is required for male sex determination in the chicken. *Nature* **461**: 267–271.
- SMITH, J. J., and S. R. VOSS, 2009 Amphibian sex determination: segregation and linkage analysis using members of the tiger salamander species complex (*Ambystoma mexicanum* and *A. tigrinum*). *Heredity* **102**: 542–548.
- SOLARI, A. J., 1993 *Sex Chromosomes and Sex Determination in Vertebrates*. CRC Press, Boca Raton, FL.
- SOLIGNAC, M., D. VAUTRIN, E. BAUDRY, F. MOUGEL, A. LOISEAU *et al.*, 2004 A microsatellite-based linkage map of the Honeybee, *Apis mellifera* L. *Genetics* **167**: 253–262.
- SONDUR, S. N., R. M. MANSHARDT and J. I. STILES, 1996 A genetic linkage map of papaya based on randomly amplified polymorphic DNA markers. *Theor. Appl. Genet.* **93**: 547–553.
- SPIGLER, R. B., K. S. LEWERS, D. S. MAIN and T. L. ASHMAN, 2008 Genetic mapping of sex determination in a wild strawberry, *Fragaria virginiana*, reveals earliest form of sex chromosome. *Heredity* **101**: 507–517.
- STREIT, A., 2008 Reproduction in *Strongyloides* (Nematoda): a life between sex and parthenogenesis. *Parasitology* **135**: 285–294.

- TAGUCHI, T., Y. HIRAI, P. T. LOVERDE, A. TOMINAGA and H. HIRAI, 2007 DNA probes for identifying chromosomes 5, 6, and 7 of *Schistoma mansoni*. *J. Parasitol.* **93**: 724–726.
- TAKEHANA, Y., K. NARUSE, S. HAMAGUCHI and M. SAKAIZUMI, 2007 Evolution of ZZ/ZW and XX/XY sex-determination systems in the closely related medaka species, *Oryzias hubbsi* and *O. dancena*. *Chromosoma* **116**: 463–470.
- TAKEHANA, Y., S. HAMAGUCHI and M. SAKAIZUMI, 2008 Different origins of ZZ/ZW sex chromosomes in closely related medaka fishes, *Oryzias javanicus* and *O. hubbsi*. *Chromosome Res.* **16**: 801–811.
- TALAMALI, A., M. BAJJI, A. L. THOMAS, J. KINET and P. DUTUIT, 2003 Flower architecture and sex determination: How does *At-riplex halimus* play with floral morphogenesis and sex genes? *New Phytol.* **157**: 105–113.
- TANAKA, K., Y. TAKEHANA, K. NARUSE, S. HAMAGUCHI and M. SAKAIZUMI, 2007 Evidence for different origins of sex chromosomes in closely related *Oryzias* fishes: substitution of the master sex-determining gene. *Genetics* **177**: 2075–2081.
- TELGEMANN-RAUBER, A., A. JAMSARI, M. S. KINNEY, J. C. PIRES and C. JUNG, 2007 Genetic and physical maps around the sex-determining M-locus of the dioecious plant asparagus. *Mol. Genet. Genomics* **278**: 221–234.
- TERAUCHI, R., and G. KAHL, 1999 Mapping of the *Dioscorea tokoro* genome: AFLP markers linked to sex. *Genome* **42**: 752–762.
- THORGAARD, G. H., 1977 Heteromorphic sex chromosomes in male rainbow trout. *Science* **196**: 900–902.
- TRAUT, W., and U. WILLHOEFF, 1990 A jumping sex determining factor in the fly *Megaselia scalaris*. *Chromosoma* **99**: 407–412.
- TRAUT, W., and B. WOLLERT, 1998 An X/Y DNA segment from an early stage of sex chromosome differentiation in the fly *Megaselia scalaris*. *Genome* **41**: 289–294.
- TRAUT, W., K. SAHARA, T. OTTO and F. MAREC, 1999 Molecular differentiation of sex chromosomes probed by comparative genomic hybridization. *Chromosoma* **108**: 173–180.
- TRIPATHI, N., M. HOFFMANN, D. WEIGEL and C. DREYER, 2009a Linkage analysis reveals the independent origin of Poeciliid sex chromosomes and a case of atypical sex inheritance in the guppy (*Poecilia reticulata*). *Genetics* **182**: 365–374.
- TRIPATHI, N., M. HOFFMANN, E. WILLING, C. LANZ, D. WEIGEL *et al.*, 2009b Genetic linkage map of the guppy, *Poecilia reticulata*, and quantitative trait loci analysis of male size and colour variation. *Proc. R. Soc. Ser. Lond. B* **276**: 2195–2208.
- TSUDA, Y., C. NISHIDA-UMEHARA, J. ISHIJIMA, K. YAMADA and Y. MATSUDA, 2007 Comparison of the Z and W sex chromosomal architectures in elegant crested tinamou (*Eudromia elegans*) and ostrich (*Struthio camelus*) and the process of sex chromosome differentiation in palaeognathous birds. *Chromosoma* **116**: 159–173.
- UNO, Y., C. NISHIDA, Y. OSHIMA, S. YOKOYAMA, I. MIURA *et al.*, 2008 Comparative chromosome mapping of sex-linked genes and identification of sex chromosomal rearrangements in the Japanese wrinkled frog (*Rana rugosa*, Ranidae) with ZW and XY sex chromosome systems. *Chromosome Res.* **16**: 637–647.
- VALENZANO, D. R., J. KIRSCHNER, R. A. KAMBER, E. ZHANG, D. WEBER *et al.*, 2009 Mapping loci associated with tail color and sex determination in the short-lived fish *Nothobranchius furzeri*. *Genetics* **183**: 1385–1395.
- VALENZUELA, N., 2008 Evolution of the gene network underlying gonadogenesis in turtle with temperature-dependent and genotypic sex determination. *Integr. Comp. Biol.* **48**: 476–485.
- VALENZUELA, N., and T. SHIKANO, 2007 Embryological ontogeny of *aromatase* gene expression in *Chrysemys picta* and *Apalone mutica* turtles: comparative patterns within and across temperature-dependent and genotypic sex determining mechanisms. *Dev. Genes Evol.* **217**: 55–62.
- VAN DOORN, G. S., and M. KIRKPATRICK, 2007 Turnover of sex chromosomes induced by sexual conflict. *Nature* **449**: 909–912.
- VENKATESAN, M., K. W. BROMAN, M. SELLERS and J. L. RASGON, 2009 An initial linkage map of the West Nile Virus vector *Culex tarsalis*. *Insect Mol. Biol.* **18**: 453–463.
- VERHULST, E. C., L. W. BEUKEBOOM and L. VAN DE ZANDE, 2010 Maternal control of haplodiploid sex determination in the wasp *Nasonia*. *Science* **328**: 620–623.
- VEYRUNES, F., P. D. WATERS, P. MIETHKE, W. RENS, D. McMILLAN *et al.*, 2008 Bird-like sex chromosomes of platypus imply recent origin of mammal sex chromosomes. *Genome Res.* **18**: 965–973.
- VICOSO, B., and B. CHARLESWORTH, 2006 Evolution on the X chromosome: unusual patterns and processes. *Nat. Rev. Genet.* **7**: 645–653.
- VOLFF, J. N., I. NANDA, M. SCHMID and M. SCHARTL, 2007 Governing sex determination in fish: regulatory putches and ephemeral dictators. *Sex. Dev.* **1**: 85–99.
- VON UBISCH, G., 1936 Genetic studies on the nature of hermaphroditic plants in *Antennaria dioica* (L.) Gaertn. *Genetics* **21**: 282–294.
- VUILLEUMIER, S., R. LANDE, J. J. M. VAN ALPHEN and O. SEEHAUSEN, 2007 Invasion and fixation of sex-reversal genes. *J. Evol. Biol.* **20**: 913–920.
- WALDBIESER, G. C., B. G. BOSWORTH, D. J. NONNEMAN and W. R. WOLTERS, 2001 A microsatellite-based genetic linkage map for channel catfish, *Ictalurus punctatus*. *Genetics* **158**: 727–734.
- WATERS, P. D., B. DUFFY, C. J. FROST, M. L. DELBRIDGE and J. A. M. GRAVES, 2001 The human Y chromosome derives largely from a single autosomal region added to the sex chromosomes 80–130 million years ago. *Cytogenet. Cell Genet.* **92**: 74–79.
- WEST, S. A., 2009 *Sex Allocation*. Princeton University Press, Princeton, NJ.
- WEST, S. A., and B. C. SHELDON, 2002 Constraints on the evolution of sex ratio adjustment. *Science* **295**: 1685–1688.
- WESTERGAARD, M., 1958 The mechanism of sex determination in dioecious plants. *Adv. Genet.* **9**: 217–281.
- WHITE, M. J. D., 1973 *Animal Cytology and Evolution*. Cambridge University Press, Cambridge, UK.
- WILKINS, A. S., 1995 Moving up the hierarchy: a hypotheses on the evolution of a genetic sex determination pathway. *BioEssays* **17**: 71–77.
- WILLIAMS, T. M., and S. B. CARROLL, 2009 Genetic and molecular insights into the development and evolution of sexual dimorphism. *Nat. Rev. Genet.* **10**: 797–804.
- WINGE, O., 1927 The location of eighteen genes in *Lebistes reticulatus*. *J. Genet.* **18**: 1.
- WORAM, R. A., K. GHARBI, T. SAKAMOTO, B. HOYHEIM, L. E. HOLM *et al.*, 2003 Comparative genome analysis of the primary sex-determining locus in salmonid fishes. *Genome Res.* **13**: 272–280.
- WORAM, R. A., C. MCGOWAN, J. A. STOUT, K. GHARBI, M. M. FERGUSON *et al.*, 2004 A genetic linkage map for Arctic char (*Salvelinus alpinus*): evidence for higher recombination rates and segregation distortion in hybrid versus pure strain mapping parents. *Genome* **47**: 304–315.
- YAMAMOTO, E., 1999 Studies on sex-manipulation and production of cloned populations in hirame, *Paralichthys olivaceus* (Temminck et Schlegel). *Aquaculture* **173**: 235–243.
- YIN, T., S. P. DiFAZIO, L. E. GUNTER, X. ZHANG, M. M. SEWELL *et al.*, 2008 Genome structure and emerging evidence of an incipient sex chromosome in *Populus*. *Genome Res.* **18**: 422–430.
- YOSHIMOTO, S., E. OKADA, H. UMEMOTO, K. TAMURA, Y. UNO *et al.*, 2008 A W-linked DM-domain gene, DM-W, participates in primary ovary development in *Xenopus laevis*. *Proc. Natl. Acad. Sci. USA* **105**: 2469–2474.
- YU, Q., R. NAVAJAS-PÉREZ, E. TONG, J. ROBERTSON, P. H. MOORE *et al.*, 2008 Recent origin of dioecious and gynodioecious Y chromosomes in Papaya. *Trop. Plant Biol.* **1**: 49–57.
- ZDOBNOV, E. M., C. VON MERING, I. LETUNIC, D. TORRENTS, M. SUYAMA *et al.*, 2002 Comparative genome and proteome analysis of *Anopheles gambiae* and *Drosophila melanogaster*. *Science* **298**: 149–159.
- ZHANG, L., M. P. SIMMONS, A. KOCYAN and S. S. RENNER, 2006 Phylogeny of the Cucurbitales based on DNA sequences of nine loci from three genomes: implications for morphological and sexual system evolution. *Mol. Phylogenet. Evol.* **39**: 305–322.
- ZHANG, L. S., C. J. YANG, Y. ZHANG, L. LI, X. M. ZHANG *et al.*, 2007 A genetic linkage map of Pacific white shrimp (*Litopenaeus vannamei*): sex-linked microsatellite markers and high recombination rates. *Genetica* **131**: 37–49.
- ZHANG, R., and H. WU, 1985 A study of sex chromosome in *Carassius auratus* by BrdU-Hoechst 33258-Giemsa technique. *Acta Genet. Sin.* **12**: 373–378.
- ZHAO, D., D. McBRIDE, S. NANDI, H. A. McQUEEN, M. J. MCGREW *et al.*, 2010 Somatic sex identity is cell autonomous in the chicken. *Nature* **464**: 237–242.