

Valproic Acid Affects Membrane Trafficking and Cell-Wall Integrity in Fission Yeast

Makoto Miyatake,* Takayoshi Kuno,* Ayako Kita,[†] Kosaku Katsura,[†] Kaoru Takegawa,[‡] Satoshi Uno,* Toshiya Nabata* and Reiko Sugiura^{†,1}

*Division of Molecular Pharmacology and Pharmacogenomics, Department of Genome Sciences, Kobe University Graduate School of Medicine, Kobe, Hyogo 650-0017, Japan, [†]Laboratory of Molecular Pharmacogenomics, School of Pharmaceutical Sciences, Kinki University, Higashi-Osaka 577-8502, Japan and [‡]Department of Life Sciences, Faculty of Agriculture, Kagawa University, Kagawa 761-0795, Japan

Manuscript received January 15, 2007
Accepted for publication February 2, 2007

ABSTRACT

Valproic acid (VPA) is widely used to treat epilepsy and manic-depressive illness. Although VPA has been reported to exert a variety of biochemical effects, the exact mechanisms underlying its therapeutic effects remain elusive. To gain further insights into the molecular mechanisms of VPA action, a genetic screen for fission yeast mutants that show hypersensitivity to VPA was performed. One of the genes that we identified was *vps45*⁺, which encodes a member of the Sec1/Munc18 family that is implicated in membrane trafficking. Notably, several mutations affecting membrane trafficking also resulted in hypersensitivity to VPA. These include *ypt3*⁺ and *ryh1*⁺, both encoding a Rab family protein, and *apm1*⁺, encoding the μ 1 subunit of the adaptor protein complex AP-1. More importantly, VPA caused vacuolar fragmentation and inhibited the glycosylation and the secretion of acid phosphatase in wild-type cells, suggesting that VPA affects membrane trafficking. Interestingly, the cell-wall-damaging agents such as micafungin or the inhibition of calcineurin dramatically enhanced the sensitivity of wild-type cells to VPA. Consistently, VPA treatment of wild-type cells enhanced their sensitivity to the cell-wall-digesting enzymes. Altogether, our results suggest that VPA affects membrane trafficking, which leads to the enhanced sensitivity to cell-wall damage in fission yeast.

VALPROIC acid (VPA) is a short-chain fatty acid widely used in humans as an anticonvulsant drug to control certain types of seizures in the treatment of epilepsy (JOHANNESSEN and JOHANNESSEN 2003). It is also used to treat various psychiatric illnesses such as bipolar disorder (JOHANNESSEN and JOHANNESSEN 2003). There are several hypotheses to explain the anticonvulsant activity of VPA (LOSCHER 1999). VPA may act through more than one target, such as the induction of histone acetylation, DNA demethylation, and chromatin decondensation (GOTTLICHER *et al.* 2001; PHIEL *et al.* 2001; JOHANNESSEN and JOHANNESSEN 2003; KRAMER *et al.* 2003; MARCHION *et al.* 2005). There have been reports showing that VPA increases the expression of genes regulated by the transcription factor, activator protein-1 (CHEN *et al.* 1997). VPA also has an anti-proliferative effect on cells and is known to induce the differentiation of cell lines derived from myeloid leukemia, teratocarcinoma, glioma, and neuroblastoma

(GURVICH *et al.* 2004; ACHACHI *et al.* 2005). Despite the progress that has been made in elucidating the biological and biochemical action of VPA, the exact mechanisms underlying their therapeutic effects have not been fully established.

The fission yeast *Schizosaccharomyces pombe* and the budding yeast *Saccharomyces cerevisiae* have become valuable tools for the study of basic cellular functions of eukaryotic cells, including mechanisms of membrane trafficking and cell cycle control (GOULD *et al.* 1990; BABST *et al.* 2000). Both are excellent organisms for the identification of molecular targets and for the elucidation of molecular/cellular mechanisms of sensitivity to various drugs, since major signaling pathways and processes involved in the cellular response to cytotoxic agents are conserved between yeasts and mammalian cells (PEREGO *et al.* 1998, 2000; SUGIURA *et al.* 2002).

To better understand the molecular basis for the mechanisms of action of VPA, we performed in fission yeast a genetic screen for mutants that show hypersensitivity to VPA. Here, we identified *vps45*⁺ that encodes a member of the Sec1/Munc18 protein (TOONEN and VERHAGE 2003). The budding-yeast homolog of Vps45 plays an essential role in membrane trafficking at the

¹Corresponding author: Laboratory of Molecular Pharmacogenomics, School of Pharmaceutical Sciences, Kinki University, Kowakae 3-4-1, Higashi-Osaka, Osaka, 577-8502, Japan.
E-mail: sugiurar@phar.kindai.ac.jp

step of fusion of Golgi-derived vesicles with the prevacuolar compartment (COWLES *et al.* 1994; BRYANT *et al.* 1998). Consistently, the *vps45* mutants displayed defects in membrane trafficking.

Notably, in addition to the *vps45* mutation, we showed that a mutation in *apm1*⁺ encoding the μ 1 subunit of the adaptor protein complex AP-1 (KITA *et al.* 2004), as well as a mutation in *ypt3*⁺ encoding Rab GTPase involved in membrane trafficking from and to the Golgi (CHENG *et al.* 2002), affected the sensitivity of cells to VPA, thus suggesting that a disturbance in the membrane trafficking events resulted in increased sensitivity to VPA. More importantly, VPA treatment caused vacuolar fragmentation and inhibited the secretion and the glycosylation of acid phosphatase, suggesting that VPA affects membrane trafficking. We also present evidence that cell-wall damage, including the treatment with micafungin or glucanases and the inhibition of calcineurin that encodes the Ca²⁺/calmodulin-dependent protein phosphatase (RUSNAK and MERTZ 2000; SUGIURA *et al.* 2002), dramatically enhanced the sensitivity of wild-type cells to VPA. To our knowledge, this is the first demonstration that VPA affects membrane trafficking, thereby causing cell-wall damage.

MATERIALS AND METHODS

Strains, media, and genetic and molecular biology methods: The complete medium YPD (yeast extract–peptone–dextrose) and Edinburgh minimal medium (EMM) have been described previously (TODA *et al.* 1996). Standard genetic and recombinant-DNA methods (MORENO *et al.* 1991) were used except where noted. FK506 was provided by Fujisawa Pharmaceutical (Osaka, Japan).

Isolation of the *vas1-1/vps45-v1* mutant and cloning of the *vps45*⁺ gene: The *vas1-1/vps45-v1* mutant was isolated in a screen of cells that had been mutagenized with nitrosoguanidine as described previously (ZHANG *et al.* 2000). To clone the *vps45*⁺ gene, the *vas1-1/vps45-v1* mutant (KP1370) was grown at 27° and transformed with an *S. pombe* genomic DNA library constructed in the vector pDB248 (BEACH *et al.* 1982) (Table 1). Leu⁺ transformants were replica plated onto YPD plates containing VPA at 27° and the plasmid DNA was recovered from transformants that showed a plasmid-dependent rescue. These plasmids complemented the VPA sensitivity of the *vas1-1/vps45-v1* mutant. By DNA sequencing, the suppressing plasmids were identified as containing the *vps45*⁺ gene (SPAC2G11.03c).

To investigate the relationship between the cloned *vps45*⁺ gene and the *vas1-1/vps45-v1* mutant, linkage analysis was performed as follows. The entire *vps45*⁺ gene was subcloned into the pUC-derived plasmid containing the *S. cerevisiae* LEU2 gene and was integrated by homologous recombination into the genome of the wild-type strain HM123. The integrant was mated with the *vas1-1/vps45-v1* mutant. The resulting diploid was sporulated, and tetrads were dissected. A total of 30 tetrads were dissected. In all cases, only parental ditype tetrads were found, indicating allelism between the *vps45*⁺ gene and the *vas1-1/vps45-v1* mutation (data not shown).

Tagging of the *vps45*⁺ gene: The *vps45*⁺ gene was amplified by PCR with the genomic DNA of wild-type cells as a template. The sense primer was 5'-GAA GAT CTC ATG GAT TTA GTA TCA GCT TCC CAA TC-3', and the antisense primer was

TABLE 1
S. pombe strains used in this study

| Strain | Genotype | Reference |
|--------|---|------------|
| HM123 | <i>h⁻ leu1-32</i> | Our stock |
| KP162 | <i>h⁻ leu1-32 ypt3-i5</i> | Our stock |
| HM528 | <i>h⁺ his2</i> | Our stock |
| KP630 | <i>h⁻ leu1-32 ura4-D18</i> <i>apm1:: ura4⁺</i> | Our stock |
| KP928 | <i>h⁺ his2 leu1-32 ura4-D18</i> | Our stock |
| KP1248 | <i>h⁻ leu1-32 ura4-294</i> | Our stock |
| KP1370 | <i>h⁻ leu1-32 vps45-v1</i> | This study |
| KP1447 | <i>h⁻ leu1-32 ryh1-i6</i> | Our stock |
| KP1747 | <i>h⁻ leu1-32 ura4-D18</i> <i>vps45:: ura4⁺</i> | This study |
| KP2035 | <i>h⁻ leu1-32 ura4-294</i> <i>nmt1GFP-syb1:: ura4⁺</i> | Our stock |
| KP2321 | <i>h⁻ leu1-32 ura4-294 nmt81</i> <i>vps45-GFP:: ura4⁺</i> | This study |
| KP2322 | <i>h⁻ leu1-32 vps45:: kanMX</i> | This study |
| KP2589 | <i>h⁻ leu1-32 ura4-294 vps45::</i> <i>kanMX nmt1GFP-syb1:: ura4⁺</i> | This study |

5'-GAA GAT CTG CGG CCG CCT TTT ATT CTG GTT GAC ATA TAC-3'. The amplified product containing the *vps45*⁺ gene was digested with *Bgl*II, and the resulting fragment was subcloned into BlueScriptSK (+) (Stratagene, La Jolla, CA).

For ectopic expression of proteins, we used the thiamine-repressible *nmt1* promoter (MAUNDRELL 1993). Expression was repressed by the addition of 4 μ M thiamine to EMM. To express Vps45-green fluorescent protein (GFP), the complete open reading frame of *vps45*⁺ was amplified by PCR and ligated to the C terminus of the GFP carrying the S65T mutation. The pREP81 vector contained the attenuated version of the *nmt1* promoter (BASI *et al.* 1993). To obtain the chromosome-borne Vps45-GFP, the fused gene was subcloned into the vector containing the *ura4*⁺ marker under the control of the *nmt81* promoter and integrated into the chromosome at the *ura4*⁺ gene locus of KP1248 (*h⁻ leu1-32 ura4-294*) as described (CHENG *et al.* 2002; KITA *et al.* 2004). The resultant strain (*h⁻ leu1-32 ura4-294 nmt81 vps45-GFP:: ura4⁺*) did not show VPA sensitivity and FK506 sensitivity, and the expression of pREP81-Vps45-GFP complemented both the VPA sensitivity and the FK506 sensitivity of the Δ *vps45* cells (data not shown).

Deletion of the *vps45*⁺ gene: A one-step gene disruption by homologous recombination was performed (ROTHSTEIN 1983). The *vps45:: ura4*⁺ disruption was constructed as follows. The *Bgl*II fragment containing the *vps45*⁺ gene was subcloned into the *Bam*HI site of BlueScriptSK (+). Then, a *Bam*HI fragment containing the *ura4*⁺ gene was inserted into the *Bam*HI site of the previous construct. The fragment containing the disrupted *vps45*⁺ gene was transformed into diploid cells. Stable integrants were selected on medium lacking uracil. The disruption of the gene was checked by genomic Southern hybridization (data not shown).

Microscopy and miscellaneous methods: Methods in light microscopy, such as fluorescence microscopy and differential interference contrast microscopy, were performed as described (KITA *et al.* 2004). FM4-64 labeling and conventional electron microscopy was performed as described (KITA *et al.* 2004). Acid phosphatase staining was performed as described previously (MAEDA *et al.* 2004). Measurement of the acid phosphatase secretion was performed as described previously (KITA *et al.* 2004).

Valproic acid studies: VPA (2-propyl-pentanoic acid) was purchased from Sigma (St. Louis), dissolved in distilled water at 1 M, and used at the final concentrations. VPA was added to plates subsequent to autoclaving and cooling of the medium to 55° or added to the liquid medium subsequently after autoclaving and cooling of the medium to the temperature as indicated in the legends of Figures 1, 4, and 6. For the growth of cells in the presence of VPA, a 20-ml culture of cells in logarithmic growth phase was treated with VPA at the concentrations.

Pulse-chase analysis and immunoblot analysis of the *S. pombe* Cpy1 protein: Pulse-chase analysis and immunoprecipitation of the vacuolar carboxypeptidase Y (CPY) were carried out as previously described (TABUCHI *et al.* 1997).

RESULTS

Isolation of *vas1-1* as a VPA-sensitive mutant: To identify genes that determine the sensitivity to VPA, we have developed a genetic screen for mutants that are hypersensitive to VPA and have identified six complementation groups (*vas1-6* for valproic acid-sensitive). Here, we will describe *vas1-1*. As shown in Figure 1A, *vas1-1* mutants grew equally well as compared with the wild-type cells at 27°. However, *vas1-1* mutant cells did not grow on a YPD plate containing 6 mM VPA at 27°, whereas wild-type cells grew normally (Figure 1A).

The *vas1-1* is an allele of the *vps45*⁺ gene that encodes a member of the Sec1/Munc18 family: The *vas1*⁺ gene was cloned by complementation of the VPA-sensitive growth defect of the *vas1-1* mutant (Figure 1A, YPD at 27°+VPA, +*vps45*⁺). Nucleotide sequencing of the cloned DNA fragment revealed that the *vas1*⁺ gene is identical to the *vps45*⁺ gene (SPAC2G11.03c), which encodes a protein of 558 amino acids that is highly similar to the human hVps45 (42.42% identity) (PEVSNER *et al.* 1996) and *S. cerevisiae* Vps45p (39.08% identity) (COWLES *et al.* 1994; PEVSNER *et al.* 1996) (Figure 1B). Linkage analysis was performed (see MATERIALS AND METHODS) and results indicated the allelism between the *vps45*⁺ gene and the *vas1-1* mutation. We therefore renamed *vas1-1* as *vps45-v1*. The *vps45* deletion cells were viable, but the $\Delta vps45$ cells also showed VPA sensitivity, similar to that of *vps45-v1* cells (Figure 1A, $\Delta vps45$ +vector).

To identify the mutation site in the *vps45-v1* allele, the genomic DNA from the *vps45-v1* mutant was isolated, and the full-length coding region of the *vps45-v1* gene was sequenced. The G-to-A nucleotide substitution caused a highly conserved glycine to be altered to an aspartic acid residue at the amino acid position 512 that lies in the domain of unknown function (Figure 1, B and C, solid arrow).

Vps45 is involved in Golgi-to-vacuole protein transport in fission yeast: In budding yeast, the vacuolar protein-sorting (VPS) pathway mediates the localization of proteins from the *trans*-Golgi to the vacuole via a prevacuolar endosome compartment. Mutations in the

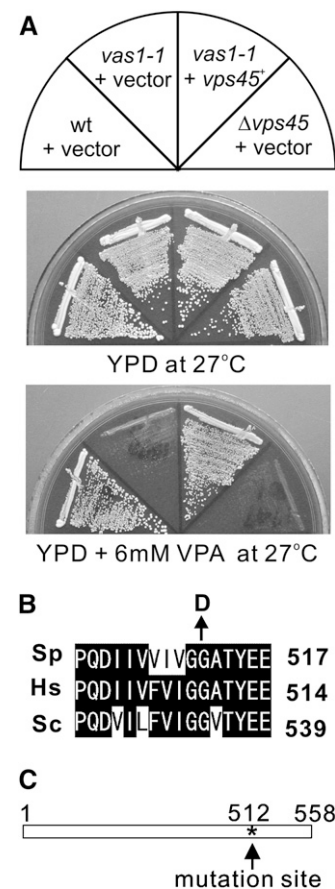


FIGURE 1.—Mutation in the *vas1*⁺/*vps45*⁺ gene causes VPA-sensitive phenotype. (A) The VPA sensitivities of the *vas1-v1/vps45-v1* mutant cells. Cells transformed with the multicopy vector pDB248 or the vector containing the *vps45*⁺ gene were streaked onto each plate containing YPD or YPD plus 6 mM VPA and then incubated for 4 days at 27°. (B) Alignment of partial protein sequences of *S. pombe* (Sp) Vps45 with related proteins from human (Hs) and *S. cerevisiae* (Sc). Sequence alignment was performed using the Clustal W program. Solid background indicates identical amino acids. Arrow indicates the highly conserved glycine 512, which, when mutated to aspartic acid, resulted in VPA-sensitive function in Vps45. (C) Linear representation of the structure of Vps45 and where the *vas1-v1* mutation resides. Asterisk indicates the mutation site.

vps genes affected the vesicle-mediated Golgi-to-vacuole protein transport and resulted in the secretion of vacuolar proteins (BANKAITIS *et al.* 1986; ROTHMAN and STEVENS 1986; ROBINSON *et al.* 1988). To investigate whether Vps45 is required for VPS, pulse-chase analysis of CPY was performed. During a 15-min pulse incubation of wild-type cells with Express ³⁵S-label, an immunoreactive band with an apparent molecular mass of 110 kDa (proCPY) was detected. After 30 min of chase, the molecular mass of this 110-kDa form was converted to the 32-kDa form (mature form of CPY) in wild-type cells (Figure 2A, wt). In $\Delta vps45$ cells, the maturation of CPY was severely impaired, indicating that $\Delta vps45$ cells mis-sort CPY (Figure 2A, $\Delta vps45$). These results are consistent

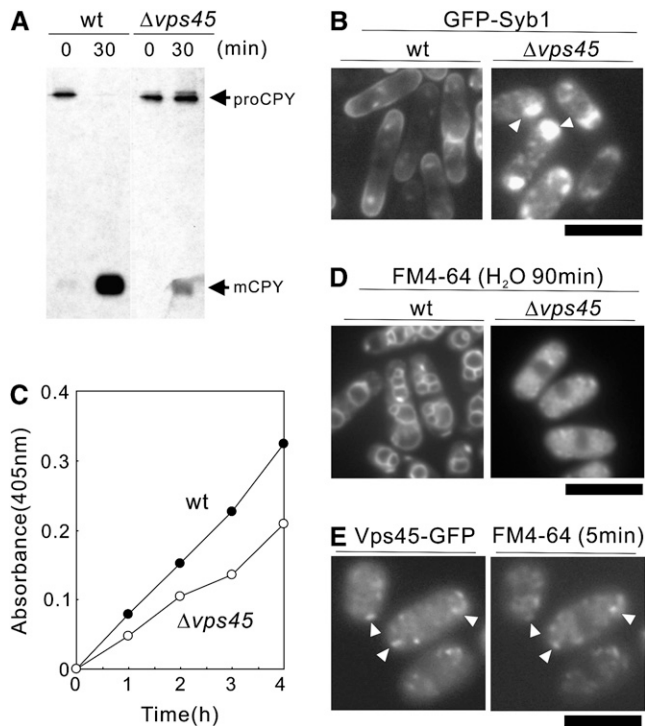


FIGURE 2.—Defects in membrane trafficking in the $\Delta vps45$ mutant cells. (A) Processing of CPY *in vivo*. Wild-type strain and $\Delta vps45$ mutant cells were pulse labeled with Express-³⁵S-label for 10 min at 27° and chased. The immunoprecipitates were separated on an SDS–10% polyacrylamide gel. The autoradiograms of the fixed dried gels are shown. proCPY, precursor form of CPY; mCPY, mature form of CPY. (B) Intracellular localization of GFP-Syb1 in $\Delta vps45$ mutant cells. Wild-type strain and $\Delta vps45$ mutant cells expressing chromosome-borne GFP-Syb1 were cultured in YPD medium at 27°. The localization of GFP-Syb1 was examined by fluorescence microscopy. Bar, 10 μ m. (C) Defective secretion of acid phosphatase in $\Delta vps45$ cells. Wild-type strain and $\Delta vps45$ cells were grown to an optical density at 660 nm of 0.3 and assayed for secreted acid phosphatase activity. The data shown are representative of multiple experiments. (D) $\Delta vps45$ mutant cells are defective in vacuole fusion. Wild-type (wt) strain and $\Delta vps45$ mutant cells were grown in YPD medium at 27°. Cells were collected, labeled with FM 4-64 fluorescent dye (see MATERIALS AND METHODS), resuspended in water, and examined by fluorescence microscope. Photographs were taken after 90 min. Bar, 10 μ m. (E) Vps45-GFP is concentrated at the Golgi/endosomal compartments. Wild-type cells, expressing chromosome-borne Vps45-GFP cultured in EMM in the absence of thiamine for 12 hr, were incubated with the FM4-64 dye for 5 min to visualize early endosomes. Arrowheads indicate the dot-like structures of Vps45-GFP and early endosomes stained with FM4-64, respectively. Bar, 10 μ m.

with the previous reports in budding yeast that the budding yeast Vps45 is required for trafficking to the vacuole (PIPER *et al.* 1994) and suggest that *S. pombe* Vps45 is the functional ortholog of *S. cerevisiae* Vps45p.

We next monitored the localization of GFP-Syb1, the synaptobrevin in fission yeast, as a GFP-fusion protein (EDAMATSU and TOYOSHIMA 2003; KITA *et al.* 2004). Synaptobrevin is a vesicle-associated membrane protein

and copurifies with secretory vesicles. As a secretory vesicle SNARE, Syb1 would be expected to cycle between the cell surface and the endocytic pathway. To assess the Golgi-to-endosome- or Golgi-to-plasma-membrane trafficking pathway, the localization of GFP-Syb1 was monitored. The fluorescence of GFP-Syb1 in wild-type cells was detected as punctate structures in the cytoplasm and was enriched in the medial region and cell ends (Figure 2B, wt). In clear contrast, in $\Delta vps45$ cells, GFP-Syb1 failed to localize to the cell surface and the medial regions. Instead, they were observed as large dots with bright fluorescence in the cytoplasm at 27° (Figure 2B, $\Delta vps45$, arrowheads). Thus, $\Delta vps45$ cells displayed a defective localization of GFP-Syb1, indicating that Vps45 is involved in Golgi-to-endosome membrane trafficking.

The $\Delta vps45$ cells also showed a defective secretion of acid phosphatase, a protein that follows the classical secretory pathway from the endoplasmic reticulum to the extracellular periplasmic space (see MATERIALS AND METHODS). The $\Delta vps45$ cells secreted a lesser amount of acid phosphatase than the wild-type cells at 27° (Figure 2C), indicating that $\Delta vps45$ cells are defective in secretion.

We also examined the vacuolar fusion induced by osmotic stress in wild-type strain and $\Delta vps45$ cells labeled with FM4-64, a vacuole-specific vital dye (VIDA and EMR 1995). Hypotonic stress causes a dramatic fusion of vacuoles in *S. pombe* (BONE *et al.* 1998). When cells were collected, washed, and resuspended in water for 90 min, the wild-type cells had evidently large vacuoles that resulted from vacuole fusion (Figure 2D, wt). In contrast, vacuoles remained small and numerous in $\Delta vps45$ cells suspended in water, indicating that Vps45 is required for vacuole fusion (Figure 2D, $\Delta vps45$).

Altogether, these phenotypes involved in membrane trafficking suggest that Vps45 is implicated in Golgi-to-endosome or Golgi-to-vacuole membrane trafficking, as well as in the secretory pathway in fission yeast.

Moreover, the chromosome-borne Vps45-GFP localized at the dot-like structures within the cytosol (Figure 2E). So, we examined whether these fluorescent dots of Vps45-GFP colocalized with the endocytic tracer dye FM4-64 at an early stage of endocytosis. After 5 min of dye uptake, most of the FM4-64-positive structures showed colocalization with Vps45-GFP structures (Figure 2E), strongly suggesting that the structures showing the localization of Vps45-GFP represent Golgi/endosome compartments, consistent with the role of Vps45 in membrane trafficking.

The $\Delta vps45$ cells displayed an accumulation of abnormal vesicular structures: In general, electron microscopic analysis has shown that mutants defective in membrane trafficking accumulate an organelle or a vesicular intermediate of the secretory compartments that precede the step in which they first function (NOVICK *et al.* 1981; KAISER and SCHEKMAN 1990; CHENG *et al.* 2002; KITA *et al.* 2004). To determine whether $\Delta vps45$ cells

accumulate such structures, cells were examined by electron microscopy.

In $\Delta vps45$ mutant cells, Golgi structures were thick and swollen (Figure 3, B and C) while in wild-type cells these abnormalities were rarely seen (Figure 3A). Another striking feature of the $\Delta vps45$ cells was the accumulation of large numbers of vesicles. In $\Delta vps45$ cells, as shown in Figure 3, B and D, there is an accumulation of large vesicles (100–150 nm in diameter) and smaller vesicles (50–80 nm in diameter), suggesting that Vps45 is required for vesicle docking and/or fusion and that Vps45 participates in multiple steps of membrane trafficking. These vesicles seem to be dispersed throughout the cytoplasm and are not clustered. The large vesicles were 100–150 nm in diameter, falling within the range of post-Golgi secretory vesicles and the smaller vesicles were 50–80 nm in diameter, suggesting the involvement of Vps45 in ER-to-Golgi trafficking. In wild-type cells, however, these structures were negligible (Figure 3A). Another morphological consequence of depleting Vps45 is a fragmentation of the vacuole (Figure 3B), which is consistent with the above results obtained by FM4-64 that $\Delta vps45$ is defective in vacuolar fusion induced by hypo-osmotic stress (Figure 2D). Collectively, the findings observed in the electron micrographs suggest a role for Vps45 in the traffic between the Golgi-to-vacuole transport and/or in the secretory pathway in fission yeast.

Various membrane trafficking mutants displayed hypersensitivity to VPA: The identification of $vps45^+$, which is implicated in membrane trafficking, as a VPA-sensitive mutant prompted us to examine whether other membrane trafficking mutants also show VPA hypersensitivity. Intriguingly, our previous genetic screen using the immunosuppressant drug FK506 has identified alleles of membrane trafficking genes, including $ypt3^+$ / $its5^+$ (CHENG *et al.* 2002), $ryh1^+$ (HE *et al.* 2006) encoding a Rab small GTPase, and $apm1^+$ (KITA *et al.* 2004) encoding a $\mu 1$ subunit of the AP-1 clathrin adaptor complex, respectively. We then examined the VPA sensitivity of these trafficking mutants. Notably, the growth of all the mutants examined was remarkably inhibited by the addition of 6 mM VPA to the medium, while the wild-type cells grew normally (Figure 4). In addition, $\Delta ppb1$ cells, the calcineurin deletion in fission yeast, also displayed a severe growth defect in the presence of 6 mM VPA (Figure 4).

VPA affects membrane trafficking: The above results suggested the possibility that the mechanisms of VPA action might be functionally related to membrane trafficking. To address this hypothesis, we first examined the effect of VPA on cell morphology by electron microscopic analysis. Notably, the wild-type cells treated with 15 mM VPA displayed highly fragmented vacuoles (Figure 5, A and B), in clear contrast to the large vacuoles observed in wild-type cells cultured in the absence of VPA (Figure 3A, arrows).

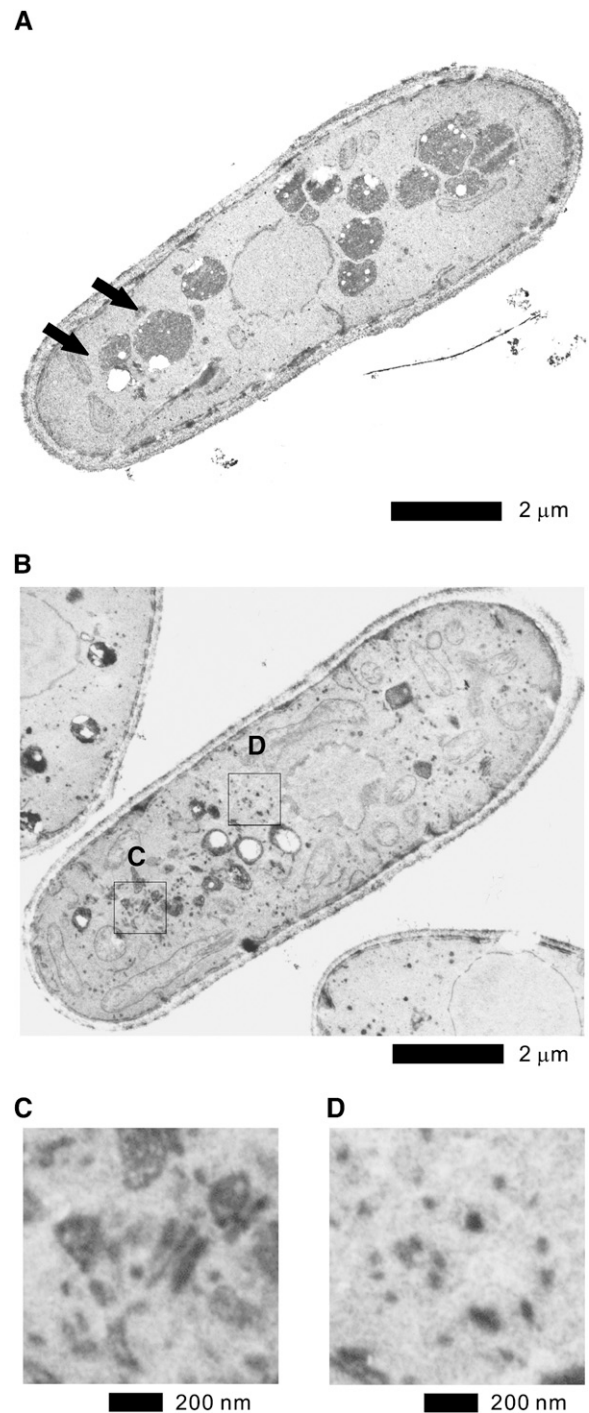


FIGURE 3.—Electron microscopic analysis of $\Delta vps45$ mutant cells and the effect of VPA treatment on wild-type cells. (A) The wild-type cells and (B) the $\Delta vps45$ mutant cells grown at 27° were analyzed by electron microscopy. Representative thin sections are shown. Arrows in A indicate vacuoles in wild-type cells. The boxed regions C and D in B are enlarged. Bar, 2 μ m. (C) The enlargement of Golgi structures of $\Delta vps45$ mutant cells. Bar, 200 nm. (D) The enlargement of the accumulated vesicle structures in $\Delta vps45$ mutant cells. Bar, 200 nm.

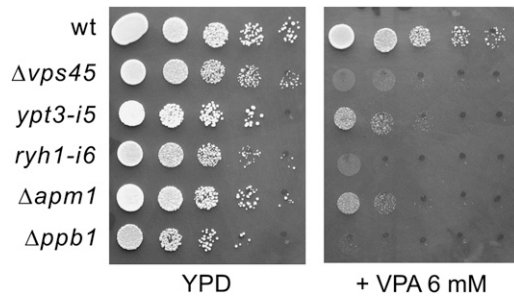


FIGURE 4.—The $\Delta vps45$ mutant cells and various membrane trafficking mutants displayed hypersensitivity to VPA. Wild-type cells and the various mutant cells were spotted onto each plate containing YPD or YPD plus 6 mM VPA and then incubated for 3 days at 27°. Cells were spotted in serial 10-fold dilutions starting with $OD_{660} = 0.3$ of log-phase cells (5 μ l).

We next examined the effect of VPA on the intracellular localization of GFP-Syb1 in wild-type cells. As shown in Figure 5B in wild-type cells cultured in the presence of 10 mM VPA, the fluorescence of GFP-Syb1 was no longer visible at cell ends (Figure 5C). Instead, GFP-Syb1 was diffusely localized in the cytosol (Figure 5C), indicating that VPA treatment caused defects in the intracellular localization of GFP-Syb1.

We further examined the effects of VPA on the glycosylation of acid phosphatase (MAEDA *et al.* 2004). On native gels, when 3 mM of VPA was added to the medium, acid phosphatase isolated from wild-type cells showed a band with a significantly lower molecular mass, and 6 mM of VPA had a dramatic impact on the mobility (Figure 5D). Acid phosphatase isolated from $\Delta vps45$ mutants migrated significantly faster than that from the wild-type strain even in the absence of VPA (Figure 5D), suggesting the impairment of protein glycosylation in $\Delta vps45$ mutants. VPA treatment also affected the mobility of acid phosphatase from the $\Delta vps45$ mutants and the effect was more marked as compared with that observed in wild-type cells (Figure 5D). Thus, the glycosylation of acid phosphatase is impaired upon VPA treatment.

Finally, we investigated the effect of VPA on secretion. For this, the secretion of acid phosphatase of wild-type cells was measured with or without the addition of various concentrations of VPA to the medium. The results clearly demonstrated that VPA inhibited the secretion of acid phosphatase in a dose-dependent manner (Figure 5E). The addition of VPA did not interfere with the activity of acid phosphatase *in vitro* (data not shown), indicating that VPA impaired the secretion of acid phosphatase *in vivo*. Together, these results suggest that VPA affects membrane trafficking in fission yeast.

Defects in cell-wall integrity lead to VPA hypersensitivity: Since all the trafficking mutants that we identified were isolated in a screen for mutants that show sensitivity to FK506 (CHENG *et al.* 2002; KITA *et al.* 2004; HE *et al.* 2006), we then hypothesized that $\Delta vps45$

mutants might also show FK506 sensitivity. Expectedly, the growth of $\Delta vps45$ mutants was significantly inhibited upon FK506 treatment, similar to that observed in other membrane trafficking mutants (Figure 6A, +FK506). As FK506 is a specific inhibitor of calcineurin phosphatase in both mammals and fission yeast (LIU *et al.* 1991; SUGIURA *et al.* 1998), it is of interest to examine the VPA sensitivity of calcineurin deletion. As described above, $\Delta ppb1$ cells, the calcineurin deletion in fission yeast, also displayed a severe growth defect in the presence of 6 mM VPA (Figure 4), thus indicating that loss of calcineurin function caused the VPA sensitivity in fission yeast. This further suggests the importance of calcineurin in the mechanisms of VPA hypersensitivity. As calcineurin regulates 1,3- β -D-glucan synthesis and FK506 treatment inhibits the glucan synthesis in budding yeast (ZHAO *et al.* 1998), we hypothesized that the inhibition of calcineurin induced cell-wall integrity defects, which lead to hypersensitivity to VPA.

Intriguingly, all the membrane trafficking mutants that we have thus far identified displayed defects in cell-wall integrity, including the hypersensitivity to micafungin, an inhibitor of 1,3- β -D-glucan synthase (CARVER 2004; DENG *et al.* 2005). We then examined the effect of micafungin on the $\Delta vps45$ cells as compared with other membrane trafficking mutants. Expectedly, micafungin markedly inhibited the growth of $\Delta vps45$ cells as well as $ypt3-i5$ cells and $\Delta apm1$ mutant cells as compared with those of wild-type cells (Figure 6A, left). Moreover, $\Delta ppb1$ cells also displayed a severe sensitivity to micafungin similar to those of the membrane trafficking mutants (Figure 6A, left). Also, the septation index of $\Delta vps45$ cells is modestly higher ($20 \pm 3\%$, average \pm SD of five independent experiments) than that of wild-type cells ($15 \pm 2\%$, average \pm SD of five independent experiments), and $\Delta vps45$ cells displayed osmoremedial temperature sensitivity (Figure 6B), the characteristic phenotypes associated with cell-wall defective mutants. Thus, $\Delta vps45$ cells, like other trafficking mutants, appeared to be defective in cell-wall integrity.

Together, these observations suggest that defects in cell-wall integrity induced by these membrane trafficking mutants lead to hypersensitivity to VPA and micafungin as well as to FK506.

We next investigated whether the VPA sensitivity is enhanced upon cell-wall damage. We first tested the effect of a low concentration of VPA (5 mM) on cell growth in the presence or absence of micafungin (1 μ g/ml). Neither drug alone had a significant effect on the cell growth of wild-type cells, whereas the synergistic effect of the two drugs was seen when VPA (5 mM) was added simultaneously with micafungin (1 μ g/ml) (Figure 6C). As shown earlier, calcineurin deletion displayed severe sensitivity to both VPA and micafungin, and to confirm this, we examined the effect of calcineurin inhibition using FK506, a specific inhibitor of calcineurin activity. Consistently, FK506 treatment enhanced the sensitivity

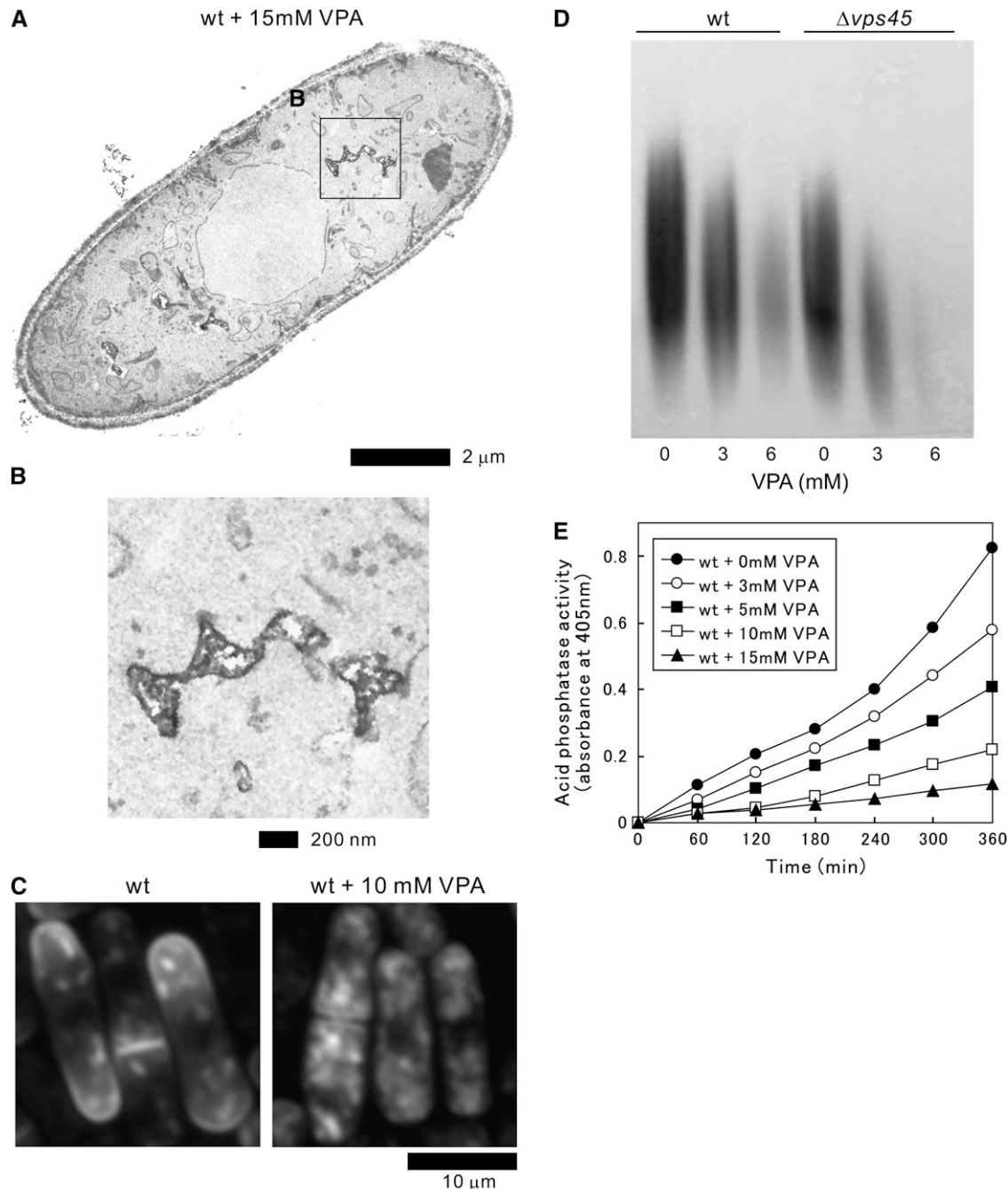


FIGURE 5.—Effect of VPA on membrane trafficking of wild-type cells. (A) Electron microscopy of wild-type cells treated with 15 mM VPA for 12 hr. The boxed region B in A is enlarged. Bar, 2 μ m. (B) The enlargement of the fragmented vacuoles in wild-type cells treated with VPA. Bar, 200 nm. (C) Effect of VPA on the intracellular localization of GFP-Syb1 in wild-type cells. Wild-type strain expressing the chromosome-borne GFP-Syb1 was cultured in YPD medium and treated with 10 mM VPA for 10 hr at 27°. The localization of GFP-Syb1 was examined by fluorescence microscopy. Bar, 10 μ m. (D) VPA-induced defects in glycosylation. Acid phosphatase glycosylation in the wild-type strain and the $\Delta vps45$ mutant cells. Effects of the addition of 3 or 6 mM VPA to the medium on these cellular processes were also examined. Immunoblot analysis and acid phosphatase staining were performed as described in MATERIALS AND METHODS. (E) VPA treatment caused the defective secretion of acid phosphatase in wild-type cells. Wild-type strains treated with indicated concentrations of VPA were grown to an optical density at 660 nm of 0.3 and assayed for the secreted acid phosphatase activity as indicated. The data presented are representative of three independent experiments.

to VPA and micafungin, indicating the synergism between FK506 treatment and these drugs.

VPA stimulates calcineurin signaling: We have recently demonstrated that cell-wall damage by micafun-

gin treatment caused Ca^{2+} influx (DENG *et al.* 2006), thereby resulting in the activation of calcineurin followed by the nuclear translocation of Prz1, a calcineurin-dependent transcription factor (HIRAYAMA *et al.* 2003).

We hypothesized that VPA treatment would have a similar effect on Prz1 localization. We then examined the effects of VPA on the nuclear translocation of GFP-Prz1. Notably, the addition of VPA to the medium dramatically induced the translocation of GFP-Prz1 from the cytosol to the nucleus (Figure 7A). Upon treatment with 5 mM VPA, the translocation of GFP-Prz1 to the nucleus was significantly induced, and >60% of the cells

displayed nuclear localization of Prz1 upon the addition of 10 mM VPA to the medium (Figure 7B).

We also examined the effect of glucanase (zymolyase 20T), a cell-wall-digesting enzyme, on the nuclear localization of GFP-Prz1. The results clearly showed that 100 µg/ml zymolyase 20T, the concentration used to digest cell wall, also stimulated the nuclear translocation of GFP-Prz1 (Figure 7A), although the frequency of nuclear accumulation was lower (45%) than that obtained with 10 mM VPA treatment (Figure 7B). Together, the nuclear accumulation of GFP-Prz1 by VPA treatment suggests the impairment of cell-wall integrity by VPA via its effect on membrane trafficking. Consistently, in the trafficking mutants that showed VPA sensitivity, including $\Delta vps45$ and $\Delta apm1$, the percentage of GFP-Prz1 located in the nucleus dramatically increased even without the addition of these drugs (data not shown).

We next examined whether VPA treatment can alter the resistance of wild-type cells to the cell-wall damage. For this, we used the glucanase sensitivity as a direct quantitative readout of cell-wall modifications. Wild-type cells were assayed for zymolyase sensitivity with or without the addition of VPA. The results clearly showed that VPA treatment enhanced the sensitivity of wild-type cells to zymolyase in a dose-dependent manner, suggesting that VPA treatment resulted in cell-wall alterations (Figure 7C).

DISCUSSION

Here, we have identified the mutations that exhibit VPA sensitivity and discovered a novel genetic interaction between VPA sensitivity and genes involved in membrane trafficking in fission yeast.

In our study, first, the *vps45* mutants were identified in a screen to isolate VPA-sensitive mutants and it was found that the *vps45* mutants displayed defects in membrane trafficking. Second, various membrane trafficking mutants and the $\Delta vps45$ mutants have several shared phenotypes, including sensitivity to the cell-wall-damaging

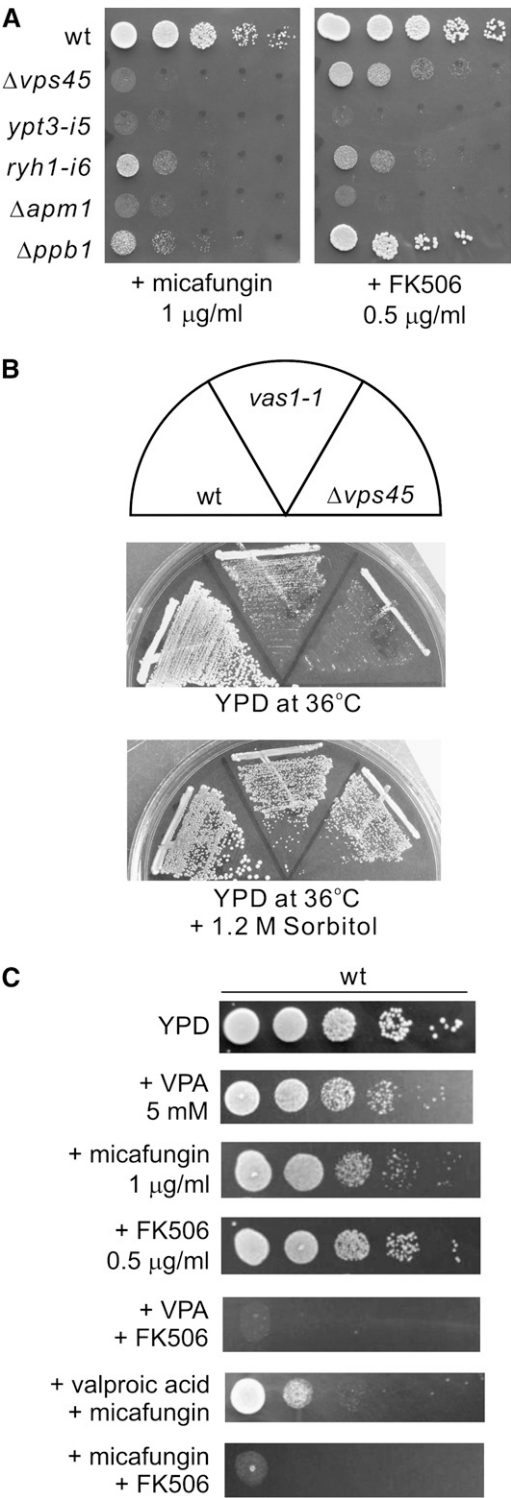


FIGURE 6.—The synergistic effect of VPA and cell-wall damage in fission yeast. (A) The $\Delta vps45$ mutant cells and various membrane trafficking mutants displayed sensitivity to the cell-wall-damaging agent micafungin and the immunosuppressant FK506. Wild-type cells and the various mutant cells as indicated were spotted onto each plate containing YPD plus 1 µg/ml micafungin or YPD plus 0.5 µg/ml FK506 and then incubated for 3 days at 27°. Cells were spotted in serial 10-fold dilutions starting with OD₆₆₀ = 0.3 of log-phase cells (5 µl). (B) The temperature sensitivities of the *vps45* mutants. Wild-type cells, *vas1-1* cells, or $\Delta vps45$ cells were streaked onto each plate containing YPD or YPD plus 1.2 M sorbitol and then incubated for 3 days at 36°. (C) Synergism between VPA and cell-wall perturbation. Wild-type cells were spotted onto the plates with or without 5 mM VPA, 0.5 µg/ml FK506, or 1.0 µg/ml micafungin, individually or in combination, and then incubated for 4 days at 27°.

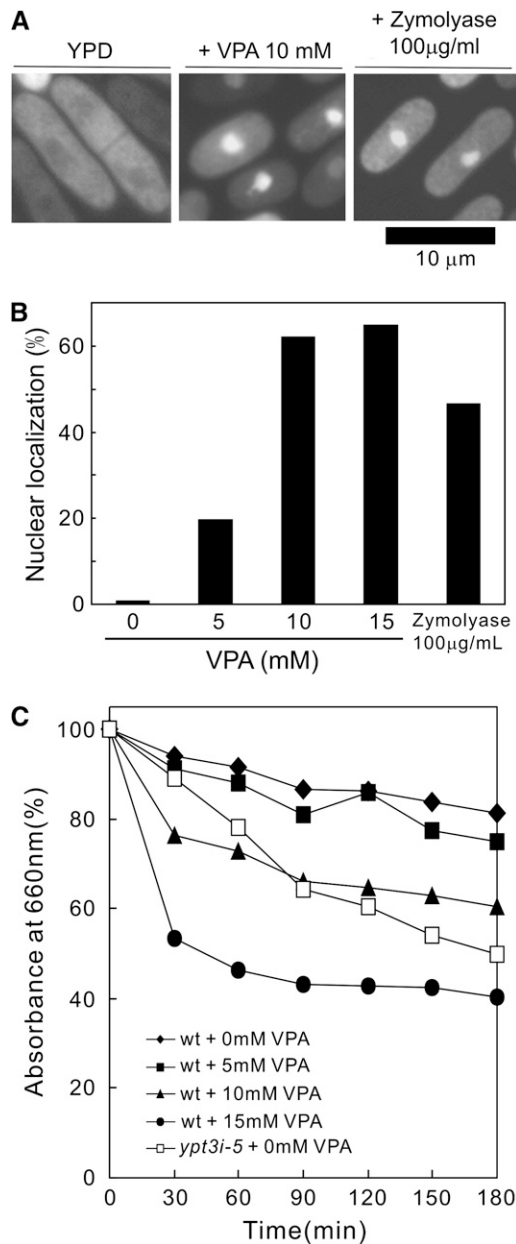


FIGURE 7.—VPA activates calcineurin signaling. (A) VPA and glucanase treatment stimulates translocation of GFP-Prz1 from the cytosol to the nucleus. The cellular localization of Prz1 was examined by immunofluorescence microscopy in wild-type cells carrying the chromosomally tagged GFP-Prz1 with or without the addition of 10 mM VPA for 6 hr or with the addition of 100 μg/ml of zymolyase 20T for 3 hr. Bar, 10 μm. (B) Quantification of the nuclear accumulation of GFP-Prz1 in wild-type cells with or without the addition of various concentrations of VPA for 6 hr or with the addition of 100 μg/ml of zymolyase for 3 hr to the medium. Data represent the average of four experiments. (C) Effect of VPA on cell-wall digestion by β-glucanase. Wild-type cells exponentially growing in YPD medium were treated with the indicated concentrations of VPA for 8 hr and incubated with 100 μg/ml of β-glucanase (zymolyase 20T) at 30° with vigorous shaking. Cell lysis was monitored by measuring optical density at 660 nm (the value before adding the enzyme was taken as 100%). The data shown are representative of multiple experiments.

agent micafungin, to the calcineurin inhibitor FK506, and to VPA. Third, VPA treatment affects membrane trafficking. Fourth, VPA sensitivity is enhanced upon cell-wall damage, including treatment with micafungin or FK506. Finally, similar to the cell-wall-damaging agents, VPA induced calcineurin activation as evidenced by the nuclear translocation of GFP-Prz1. Altogether, these results suggest that VPA primarily affects membrane trafficking, which leads to the enhanced sensitivity to cell-wall damage and the hyperactivation of calcineurin signaling in fission yeast.

It should be noted that among the membrane trafficking mutants, the $\Delta vps45$ mutants and *ryh1-i6* mutants displayed similar sensitivities to various cell-wall-damaging agents examined. Both mutants showed more severe sensitivity to VPA as compared with that of the $\Delta apm1$ mutants and *ypt3-i5* mutants (Figure 4). In contrast, the growth of the $\Delta vps45$ mutants and *ryh1-i6* mutants was relatively weakly inhibited upon FK506 treatment compared with that of the $\Delta apm1$ mutants and *ypt3-i5* mutants (Figure 6A).

These differences in sensitivity to the drugs can be explained by the roles of these two proteins in membrane trafficking, as both Ryh1 and Vps45 are functionally closely involved in Golgi-to-endosome transport, and the defects in secretion in both mutants were relatively modest compared with those of *ypt3-i5* mutants and $\Delta apm1$ mutants as judged by the severity of the accumulation of the secretory vesicles (KITA *et al.* 2004).

Unexpectedly, $\Delta vps45$ mutants, unlike other membrane trafficking mutants, displayed similar sensitivity to glucanases as compared with that of wild-type cells (data not shown), although $\Delta vps45$ mutants showed the osmoremedial temperature sensitivity, a phenotype characteristic to cell-wall-defective mutants. We also monitored the cell-wall architecture or septum of $\Delta vps45$ cells by electron microscopy. However, these structures in $\Delta vps45$ cells were not discernible from those of wild-type cells (data not shown). Therefore, the sensitivity of $\Delta vps45$ mutants to VPA can be interpreted as the consequence of the synergistic inhibition of membrane trafficking by the *vps45* mutation and the drug. Consistently, upon VPA treatment, the inhibition of the glycosylation was more severely manifested in the $\Delta vps45$ mutants compared with that of wild-type cells (Figure 5D).

In the same line, we demonstrated synergistic inhibition of cell growth by VPA and micafungin, FK506 showing that VPA sensitivity is increased by the presence of cell-wall-damaging agents. We reasoned that the synergistic effect is most probably the consequence of inhibition of cell-wall synthesis by micafungin combined with a more general defect produced by secretory defects induced by VPA and/or calcineurin inhibition.

Alternatively, the cell-wall defects can also be a consequence of calcineurin misregulation in the *vps45* mutants, as a relationship between calcium and cell-wall synthesis has been shown (CARNERO *et al.* 2000; CORTES

et al. 2004). Consistent with this hypothesis, the membrane trafficking mutants, including the *vps45* mutant, displayed a higher frequency of the nuclear accumulation of GFP-Prz1, indicating that calcineurin activation is induced in these mutants. This hyperactivation of the calcineurin signaling in the trafficking mutants may be due to defects in cell-wall integrity that are caused by impaired secretion.

Another important feature of our study is the demonstration that VPA affects glycosylation in fission yeast. It has been described that defects in glycosylation caused several drug sensitivities, including hygromycin B, an aminoglycoside (DEAN 1995). It is possible that defects in glycosylation might cause alteration in the cell-wall glycoproteins, and as a consequence, a defective cell wall alters the sensitivity to VPA (CORTES *et al.* 2004; BATES *et al.* 2005). Thus, the sensitivity of the *vas1/vps45* mutant to micafungin or FK506 might be an indirect effect of the secretion and glycosylation defects in the *vas1/vps45* mutant.

Recent progress in glycobiology has highlighted the importance of glycosylation in many key biological processes, such as molecular trafficking, signal transduction, and cell adhesion, and an increasing number of diseases of glycosylation are being discovered, including congenital disorders (OHTSUBO and MARTH 2006). Thus, if VPA affects glycosylation in higher eukaryotes as well, VPA-induced alteration in glycosylation might explain the various side effects of VPA.

In summary, this study demonstrates for the first time that VPA affects membrane trafficking, thereby inducing calcineurin hyperactivation and cell-wall damage. Also, the genetic screen of VPA-sensitive mutants in fission yeast may contribute to the further identification of the new components involved in the membrane trafficking pathway, as well as to the understanding of the molecular basis of VPA action.

We thank Takashi Toda, Mitsuhiro Yanagida, Chikashi Shimoda, and the National Bio-Resource Project for providing strains and plasmids; Susie O. Sio for critical reading of the manuscript; and Fujisawa JAPAN for gifts of FK506. This work was supported by the 21st Century Center of Excellence Program, the Asahi Glass Foundation, the Uehara Memorial Foundation, and research grants from the Ministry of Education, Culture, Sports, Science and Technology of Japan.

LITERATURE CITED

- ACHACHI, A., A. FLORINS, N. GILLET, C. DEBACQ, P. URBAIN *et al.*, 2005 Valproate activates bovine leukemia virus gene expression, triggers apoptosis, and induces leukemia/lymphoma regression in vivo. *Proc. Natl. Acad. Sci. USA* **102**: 10309–10314.
- BABST, M., G. ODORIZZI, E. J. ESTEPA and S. D. EMR, 2000 Mammalian tumor susceptibility gene 101 (TSG101) and the yeast homologue, Vps23p, both function in late endosomal trafficking. *Traffic* **1**: 248–258.
- BANKAITIS, V. A., I. M. JOHNSON, and S. D. EMR, 1986 Isolation of yeast mutants defective in protein targeting to the vacuole. *Proc. Natl. Acad. Sci. USA* **83**: 9075–9079.
- BASI, G., E. SCHMID and K. MAUNDRELL, 1993 TATA box mutations in the *Schizosaccharomyces pombe nmt1* promoter affect transcription efficiency but not the transcription start point or thiamine repressibility. *Gene* **123**: 131–136.
- BATES, S., D. M. MACCALLUM, G. BERTRAM, C. A. MUNRO, H. B. HUGHES *et al.*, 2005 *Candida albicans* Pmr1p, a secretory pathway P-type $\text{Ca}^{2+}/\text{Mn}^{2+}$ -ATPase, is required for glycosylation and virulence. *J. Biol. Chem.* **280**: 23408–23415.
- BEACH, D., M. PIPER and P. NURSE, 1982 Construction of a *Schizosaccharomyces pombe* gene bank in a yeast bacterial shuttle vector and its use to isolate genes by complementation. *Mol. Gen. Genet.* **187**: 326–329.
- BONE, N., J. B. MILLAR, T. TODA and J. ARMSTRONG, 1998 Regulated vacuole fusion and fission in *Schizosaccharomyces pombe*: an osmotic response dependent on MAP kinases. *Curr. Biol.* **8**: 135–144.
- BRYANT, N. J., R. C. PIPER, S. R. GERRARD and T. H. STEVENS, 1998 Traffic into the prevacuolar/endosomal compartment of *Saccharomyces cerevisiae*: a VPS45-dependent intracellular route and a VPS45-independent, endocytic route. *Eur. J. Cell Biol.* **76**: 43–52.
- CARNERO, E., J. C. RIBAS, B. GARCIA, A. DURAN and Y. SANCHEZ, 2000 *Schizosaccharomyces pombe* chs1p is involved in maintaining cell wall integrity and in calcium uptake. *Mol. Gen. Genet.* **264**: 173–183.
- CARVER, P. L., 2004 Micafungin. *Ann. Pharmacother.* **38**: 1707–1721.
- CHEN, G., P. YUAN, D. B. HAWVER, W. Z. POTTER and H. K. MANJI, 1997 Increase in AP-1 transcription factor DNA binding activity by valproic acid. *Neuropsychopharmacology* **16**: 238–245.
- CHENG, H., R. SUGIURA, W. WU, M. FUJITA, Y. LU *et al.*, 2002 Role of the Rab GTP-binding protein Ypt3 in the fission yeast exocytic pathway and its connection to calcineurin function. *Mol. Biol. Cell* **13**: 2963–2976.
- CORTES, J. C., R. KATO-FUKUI, K. MOTO, J. C. RIBAS and J. ISHIGURO, 2004 *Schizosaccharomyces pombe* Pmr1p is essential for cell wall integrity and is required for polarized cell growth and cytokinesis. *Eukaryot. Cell* **3**: 1124–1135.
- COWLES, C. R., S. D. EMR and B. F. HORAZDOVSKY, 1994 Mutations in the VPS45 gene, a SEC1 homologue, result in vacuolar protein sorting defects and accumulation of membrane vesicles. *J. Cell Sci.* **107** (Pt. 12): 3449–3459.
- DEAN, N., 1995 Yeast glycosylation mutants are sensitive to aminoglycosides. *Proc. Natl. Acad. Sci. USA* **92**: 1287–1291.
- DENG, L., R. SUGIURA, K. OHTA, K. TADA, M. SUZUKI *et al.*, 2005 Phosphatidylinositol-4-phosphate 5-kinase regulates fission yeast cell integrity through a phospholipase C-mediated protein kinase C-independent pathway. *J. Biol. Chem.* **280**: 27561–27568.
- DENG, L., R. SUGIURA, M. TAKEUCHI, M. SUZUKI, H. EBINA *et al.*, 2006 Real-time monitoring of calcineurin activity in living cells: evidence for two distinct Ca^{2+} -dependent pathways in fission yeast. *Mol. Biol. Cell* **17**: 4790–4800.
- EDAMATSU, M., and Y. Y. TOYOSHIMA, 2003 Fission yeast synaptobrevin is involved in cytokinesis and cell elongation. *Biochem. Biophys. Res. Commun.* **301**: 641–645.
- GOTTLICHER, M., S. MINUCCI, P. ZHU, O. H. KRAMER, A. SCHIMPF *et al.*, 2001 Valproic acid defines a novel class of HDAC inhibitors inducing differentiation of transformed cells. *EMBO J.* **20**: 6969–6978.
- GOULD, K. L., S. MORENO, N. K. TONKS and P. NURSE, 1990 Complementation of the mitotic activator, p80cdc25, by a human protein-tyrosine phosphatase. *Science* **250**: 1573–1576.
- GURVICH, N., O. M. TSYGANKOVA, J. L. MEINKOTH and P. S. KLEIN, 2004 Histone deacetylase is a target of valproic acid-mediated cellular differentiation. *Cancer Res.* **64**: 1079–1086.
- HE, Y., R. SUGIURA, Y. MA, A. KITA, L. DENG *et al.*, 2006 Genetic and functional interaction between Ryh1 and Ypt3: two Rab GTPases that function in *S. pombe* secretory pathway. *Genes Cells* **11**: 207–221.
- HIRAYAMA, S., R. SUGIURA, Y. LU, T. MAEDA, K. KAWAGISHI *et al.*, 2003 Zinc finger protein Prz1 regulates Ca^{2+} but not Cl^- homeostasis in fission yeast. Identification of distinct branches of calcineurin signaling pathway in fission yeast. *J. Biol. Chem.* **278**: 18078–18084.
- JOHANNESSEN, C. U., and S. I. JOHANNESSEN, 2003 Valproate: past, present, and future. *CNS Drug Rev.* **9**: 199–216.
- KAISER, C. A., and R. SCHEKMAN, 1990 Distinct sets of SEC genes govern transport vesicle formation and fusion early in the secretory pathway. *Cell* **61**: 723–733.

- KITA, A., R. SUGIURA, H. SHOJI, Y. HE, L. DENG *et al.*, 2004 Loss of Apm1, the μ 1 subunit of the clathrin-associated adaptor-protein-1 complex, causes distinct phenotypes and synthetic lethality with calcineurin deletion in fission yeast. *Mol. Biol. Cell* **15**: 2920–2931.
- KRAMER, O. H., P. ZHU, H. P. OSTENDORFF, M. GOLEBIEWSKI, J. TIEFENBACH *et al.*, 2003 The histone deacetylase inhibitor valproic acid selectively induces proteasomal degradation of HDAC2. *EMBO J.* **22**: 3411–3420.
- LIU, J., J. D. FARMER, JR., W. S. LANE, J. FRIEDMAN, I. WEISSMAN *et al.*, 1991 Calcineurin is a common target of cyclophilin-cyclosporin A and FKBP-FK506 complexes. *Cell* **66**: 807–815.
- LOSCHER, W., 1999 Valproate: a reappraisal of its pharmacodynamic properties and mechanisms of action. *Prog. Neurobiol.* **58**: 31–59.
- MAEDA, T., R. SUGIURA, A. KITA, M. SAITO, L. DENG *et al.*, 2004 Pmr1, a P-type ATPase, and Pdt1, an Nramp homologue, cooperatively regulate cell morphogenesis in fission yeast: the importance of Mn^{2+} homeostasis. *Genes Cells* **9**: 71–82.
- MARCHION, D. C., E. BICAKU, A. I. DAUD, D. M. SULLIVAN and P. N. MUNSTER, 2005 Valproic acid alters chromatin structure by regulation of chromatin modulation proteins. *Cancer Res.* **65**: 3815–3822.
- MAUNDRELL, K., 1993 Thiamine-repressible expression vectors pREP and pRIP for fission yeast. *Gene* **123**: 127–130.
- MORENO, S., A. KLAR and P. NURSE, 1991 Molecular genetic analysis of fission yeast *Schizosaccharomyces pombe*. *Methods Enzymol.* **194**: 795–823.
- NOVICK, P., S. FERRO and R. SCHEKMAN, 1981 Order of events in the yeast secretory pathway. *Cell* **25**: 461–469.
- OHTSUBO, K., and J. D. MARTH, 2006 Glycosylation in cellular mechanisms of health and disease. *Cell* **126**: 855–867.
- PEREGO, P., F. ZUNINO, N. CARENINI, F. GIULIANI, S. SPINELLI *et al.*, 1998 Sensitivity to cisplatin and platinum-containing compounds of *Schizosaccharomyces pombe rad* mutants. *Mol. Pharmacol.* **54**: 213–219.
- PEREGO, P., G. S. JIMENEZ, L. GATTI, S. B. HOWELL and F. ZUNINO, 2000 Yeast mutants as a model system for identification of determinants of chemosensitivity. *Pharmacol. Rev.* **52**: 477–492.
- PEVSNER, J., S. C. HSU, P. S. HYDE and R. H. SCHELLER, 1996 Mammalian homologues of yeast vacuolar protein sorting (*vps*) genes implicated in Golgi-to-lysosome trafficking. *Gene* **183**: 7–14.
- PHIEL, C. J., F. ZHANG, E. Y. HUANG, M. G. GUENTHER, M. A. LAZAR *et al.*, 2001 Histone deacetylase is a direct target of valproic acid, a potent anticonvulsant, mood stabilizer, and teratogen. *J. Biol. Chem.* **276**: 36734–36741.
- PIPER, R. C., E. A. WHITTERS and T. H. STEVENS, 1994 Yeast Vps45p is a Sec1p-like protein required for the consumption of vacuole-targeted, post-Golgi transport vesicles. *Eur. J. Cell Biol.* **65**: 305–318.
- ROBINSON, J. S., D. J. KLIONSKY, L. M. BANTA and S. D. EMR, 1988 Protein sorting in *Saccharomyces cerevisiae*: isolation of mutants defective in the delivery and processing of multiple vacuolar hydrolases. *Mol. Cell Biol.* **8**: 4936–4948.
- ROTHMAN, J. H., and T. H. STEVENS, 1986 Protein sorting in yeast: mutants defective in vacuole biogenesis mislocalize vacuolar proteins into the late secretory pathway. *Cell* **47**: 1041–1051.
- ROTHSTEIN, R. J., 1983 One-step gene disruption in yeast. *Methods Enzymol.* **101**: 202–211.
- RUSNAK, F., and P. MERTZ, 2000 Calcineurin: form and function. *Physiol. Rev.* **80**: 1483–1521.
- SUGIURA, R., T. TODA, H. SHUNTOH, M. YANAGIDA and T. KUNO, 1998 *pmp1⁺*, a suppressor of calcineurin deficiency, encodes a novel MAP kinase phosphatase in fission yeast. *EMBO J.* **17**: 140–148.
- SUGIURA, R., S. O. SIO, H. SHUNTOH and T. KUNO, 2002 Calcineurin phosphatase in signal transduction: lessons from fission yeast. *Genes Cells* **7**: 619–627.
- TABUCHI, M., O. IWAIHARA, Y. OHTANI, N. OHUCHI, J. SAKURAI *et al.*, 1997 Vacuolar protein sorting in fission yeast: cloning, biosynthesis, transport, and processing of carboxypeptidase Y from *Schizosaccharomyces pombe*. *J. Bacteriol.* **179**: 4179–4189.
- TODA, T., S. DHUT, F. G. SUPERTI, Y. GOTOH, E. NISHIDA *et al.*, 1996 The fission yeast *pmk1⁺* gene encodes a novel mitogen-activated protein kinase homolog which regulates cell integrity and functions coordinately with the protein kinase C pathway. *Mol. Cell Biol.* **16**: 6752–6764.
- TOONEN, R. F., and M. VERHAGE, 2003 Vesicle trafficking: pleasure and pain from SM genes. *Trends Cell Biol.* **13**: 177–186.
- VIDA, T. A., and S. D. EMR, 1995 A new vital stain for visualizing vacuolar membrane dynamics and endocytosis in yeast. *J. Cell Biol.* **128**: 779–792.
- ZHANG, Y., R. SUGIURA, Y. LU, M. ASAMI, T. MAEDA *et al.*, 2000 Phosphatidylinositol 4-phosphate 5-kinase Its3 and calcineurin Ppb1 coordinately regulate cytokinesis in fission yeast. *J. Biol. Chem.* **275**: 35600–35606.
- ZHAO, C., U. S. JUNG, P. GARRETT-ENGELE, T. ROE, M. S. CYERT *et al.*, 1998 Temperature-induced expression of yeast FKS2 is under the dual control of protein kinase C and calcineurin. *Mol. Cell Biol.* **18**: 1013–1022.

Communicating editor: P. RUSSELL